

# ANNUAL REPORT 2022

National Programme for Tuberculosis Control  
and Chest diseases

Ministry of Health and Mass Media

### **Advisory Panel**

- Dr. H.D.B. Herath, - Director/ NPTCCD
- Dr. Nirupa Pallewatte - Deputy Director/ NPTCCD

### **Writing Panel**

- Dr. Mizaya Cader - Consultant Community Physician
- Dr. Sujeeva Theannilawu - Medical Officer
- Mr. Janaka Thilakarathne - Medical Records Officer (Acting)

### **Review Panel**

- Dr. Onali Rajapaksha - Consultant Community Physician
- Dr. Shiromi Malwatta Mohotti - Consultant Community Physician

## TABLE OF CONTENT

TABLE OF CONTENT .....	2
LIST OF TABLES .....	4
LIST OF FIGURES .....	5
LIST OF ABBREVIATIONS .....	6
MESSAGE FROM THE DIRECTOR.....	7
PREFACE .....	8
<b>PART I.....</b>	<b>9</b>
<b>PROGRESS REPORT.....</b>	<b>9</b>
1. INTRODUCTION .....	10
National Programme for Tuberculosis Control and Chest Diseases .....	10
Key messages .....	10
Sustainable Development Goals & End TB Strategy .....	11
2. METHODS .....	13
2.1 Notification system .....	15
2.2 Treatment outcomes for TB patients .....	16
2.3 Notification rate of all TB cases.....	18
3. RESULTS.....	21
3.1 Surveillance of Tuberculosis .....	21
3.2 Incidence of Tuberculosis .....	21
3.3 Case Detection of TB .....	22
Extra Pulmonary TB.....	28
New EPTB Case Detection .....	28
Sites of EPTB Cases.....	28
Previously treated TB Cases .....	31
Multi Drug Resistant Tuberculosis (MDR-TB) .....	32
TB/HIV Co-Infection.....	34
TB Among Health Care Workers.....	35
TB Among Foreign Nationals.....	36
Sputum conversion among pulmonary TB patients .....	37
3.4 Treatment outcome of TB patients .....	37

Treatment Outcome of PTB Cases.....	41
Treatment Outcome of New Bacteriology confirmed PTB cases .....	43
Treatment Outcome of clinically diagnosed cases .....	44
Treatment Outcome of Sputum Negative and Culture Positive Cases.....	45
3.5 DOTS coverage .....	48
<b>PART II.....</b>	<b>50</b>
<b>ACTIVITY REPORT .....</b>	<b>50</b>
<b>PART III.....</b>	<b>53</b>
<b>Administration Report.....</b>	<b>53</b>
Laboratory Services .....	54
External Quality Assurance of Sputum Microscopy.....	55
X-Ray Facilities .....	55
BCG Vaccination .....	55
<b>Detailed Tables .....</b>	<b>57</b>

## LIST OF TABLES

Table 1: Targets and Milestones to end TB .....	12
Table 2: depicts the distribution of Primary and Miliary TB cases over the years, from 2010 – 2021. 27	27
Table 3: MDR patients reported and their treatment enrollment 2010 - 2021 .....	29
Table 4: Outcome of MDR-TB for previous years.....	29
Table 5: Outcomes of HIV patients reported from the districts .....	32
Table 6: Treatment outcome summary of all forms of TB 2020.....	36
Table 7: Population coverage of DOTS in the country is 100% since 2010.....	45
Table 8: Testing by WHO recommended Rapid Diagnostics in 2021.....	55
Table 9: Annual Mortality of All TB Cases from 2006-2021.....	57
Table 10: Distribution Rates of all TB cases by District of Residence in 2021.....	58
Table 11: All TB Case Detection by District of Registration in 2021 .....	59
Table 12: Distribution of New Cases of TB by Province in 2021 .....	60
Table 13: Distribution of new cases of TB by Age and Type in 2021 .....	61
Table 14: Distribution of New Cases of TB by Age and Sex in 2021.....	61
Table 15: Age and Sex Distribution of All New TB Cases by District in 2021 .....	62
Table 16: Age and Sex Distribution of Smear Positive New TB Cases by District in 2021.....	63
Table 17: Age and Sex Distribution of Smear Negative New TB Cases by District in 2021.....	64
Table 18: Age and Sex Distribution of All New PTB Cases by District in 2021 .....	65
Table 19: Age and Sex Distribution of New EPTB Cases by District in 2021 .....	66
Table 20: Distribution of Treatment Outcome of All forms of TB by Districts in 2020.....	67
Table 21: Distribution of Treatment Outcome of All Forms of New (PTB and EPTB) Cases by District in 2020.....	68
Table 22: Distribution of Treatment Outcome of All New PTB Cases by District in 2020.....	69
Table 23: Distribution of Treatment Outcome of New Sputum Positive PTB Cases by District in 2020 .....	70
Table 24: Distribution of Treatment Outcome of New Sputum Negative PTB Cases by District in 2020 .....	71
Table 25: Distribution of Treatment Outcome of EPTB Cases by District in 2020.....	72
Table 26: Distribution of Treatment Outcome of Re-Treatment TB Cases by District in 2020.....	73
Table 27: Distribution of Treatment Outcome of Other TB Cases by District in 2020.....	74
Table 28: Distribution of Sputum Conversion of New PTB Cases at the End of the Intensive Phase by District in 2020 .....	75
Table 29: Distribution of Sputum Conversion of Re-Treatment PTB Cases at the End of the Intensive Phase by District in 2020 .....	76
Table 30: All TB Case Detection by category by District of Registration in 2020.....	77
Table 31: Distribution of Treatment Outcome of WRD TB Cases by District in 2020.....	78
Table 32: Distribution of Treatment Outcome of Sputum Negative Culture Positive TB Cases by District in 2020.....	79

## LIST OF FIGURES

Figure 1: Tuberculosis incidence rates from 2005 to 2022 .....	21
Figure 2: Case detection of TB by type in 2005 - 2022 .....	22
Figure 3: Case Detection of TB by Type in 2022 .....	23
Figure 4: TB case detection by district of registration in 2022 .....	23
Figure 5: The map of Sri Lanka with TB case detection by district – 2022 .....	24
Figure 6: Percentage distribution of new cases of TB by type and district in 2022.....	25
Figure 7: Distribution of new bacteriological confirmed pulmonary TB cases by district - 2022 .....	26
Figure 8: Distribution of clinically diagnosed new PTB Cases by district 2022 .....	27
Figure 9: Distribution of all new TB cases by age groups and sex in 2022 .....	27
Figure 10: Distribution of new extra Pulmonary TB cases by district in 2022 .....	28
Figure 11: Distribution of Miliary and Primary TB cases from 2010-2022.....	30
Figure 12: Distribution of Meningitis and Primary TB cases from 2010-2022 .....	30
Figure 13: Proportion of previously treated categories by district in 2022.....	31
Figure 14: Number of MDR-TB cases against the treatment success rate-2013-2020.....	33
Figure 15: District distribution of Multi Drug Resistant Tuberculosis by District in 2022.....	33
Figure 16: Percentages and Numbers of TB/HIV screening 2010-2022.....	34
Figure 17: Number of TB patients detected by HIV and TB programmes .....	34
Figure 18: Distribution of Health Workers (36 Patients) Detected 2022 .....	35
Figure 19: Sputum Conversion Percentage of New Smear-Positive Cases by District.....	37
Figure 20: Treatment Success Rate of All Forms of TB in 2010-2021 .....	38
Figure 21: Treatment Success Rate of All Forms of TB by Districts in 2021.....	39
Figure 22: Treatment outcome summary of all forms of TB in 2021.....	41
Figure 23: Treatment Outcome of Pulmonary TB Cases from 2005-2021.....	42
Figure 24: Treatment Success Rates of New Bacteriologically confirmed PTB Cases by Districts in 2021.....	44
Figure 25: Treatment Outcome Summary of Bacteriologically Diagnosed TB Patients in 2021.....	45
Figure 26: Treatment Outcome Summary of Clinically Diagnosed TB Patients in 2021 .....	41
Figure 27: Treatment Outcome Summary of Extra Pulmonary TB Patients in 2021 .....	46
Figure 28: Treatment Outcome Summary of Re-Treatment TB Patients in 2021.....	47
Figure 29: Treatment Outcome Summary of PTB Negative WRD Positive TB Patients in 2021 .....	47
Figure 30: Treatment Outcome Summary of Treatment History Unknown TB Patients in 2021 .....	48

## LIST OF ABBREVIATIONS

AFB	Acid Fast Bacilli
AIDS	Acquired Immune Deficiency Syndrome
BCG	Bacillus Calmette–Guerin
CDS	Central Drug Stores
DCC	District Chest Clinic
DOTS	Directly Observed Therapy Short course
DST	Drug Susceptibility Testing
DTCO	District Tuberculosis Control Officers
EPTB	Extra Pulmonary Tuberculosis
EQA	External Quality Assessment
FDC	Fixed Dose Combination
GDF	Global Drug Facility
GFATM	Global Fund to fight AIDS, Tuberculosis and Malaria
HIV	Human Immune Deficiency Virus
IEC	Information, Education and Communication
MDG	Millennium Development Goals
MDR-TB	Multi Drug Resistant Tuberculosis
NPTCCD	National Program for Tuberculosis Control and Chest Diseases
NTRL	National Tuberculosis Reference Laboratory
OPD	Outpatient Department
PTB	Pulmonary Tuberculosis
SAARC	South Asian Association for Regional Cooperation
SEARO	Regional Office for South-East Asia (WHO)
STAC	SAARC Tuberculosis and AIDS Centre
TB	Tuberculosis
WHO	World Health Organization

## MESSAGE FROM THE DIRECTOR

The National Programme for Tuberculosis Control and Chest Diseases (NPTCCD), as the main focal point at the national level, is responsible for controlling the TB burden in the country and has taken the initiative to achieve End TB targets and objectives by the year 2035 through strengthening active case finding, standard management for patients with TB, and enhancing preventive measures. Since Sri Lanka has an effective TB and chest disease control programme, there were challenges in implementing some parts of the programme due to the COVID-19 pandemic and the lockdown situation and subsequent economic crisis situation in 2022. The directorate works closely with relevant ministerial units, other state and private sector stakeholders, and community entities and collaborates with the WHO and the Global Fund to reach the End TB targets.

We appreciate the continuous commitment rendered by the staff of all district chest clinics in Sri Lanka, as well as the commitment made by patients and their relatives who came forward to comply with treatment and collaborate to reduce the stigma associated with TB despite COVID- 19 situation in the country.

Dr. H.D.B. Herath,

Director

NPTCCD



## PREFACE

The annual report of the National Programme for Tuberculosis Control and Chest Diseases (NPTCCD) is an annual publication on activities and achievements of tuberculosis (TB) and chest diseases control in Sri Lanka for the year 2022.

The objective of this annual report is to provide information to a wide range of stakeholders on the progress and performance of TB control activities in Sri Lanka.

It comprises three parts.

**Part I:** Provides the performance of NPTCCD. Data collected during 2022 are analyzed and presented. These findings could be useful for policymakers to provide necessary decisions on improving TB services. In addition, District Tuberculosis Control Officers (DTCO) and other provincial or district-level health professionals can utilize this information to focus their activities more precisely to reach national targets of TB control.

**Part II:** Provides information regarding the TB control activities carried out in Sri Lanka in 2022 at the national and district level.

**Part III:** Describes the administrative framework of the NPTCCD and facilities affiliated with TB control services.

**PART I**  
**PROGRESS REPORT**

## 1. INTRODUCTION

### **National Programme for Tuberculosis Control and Chest Diseases**

National Programme for Tuberculosis Control and Chest Diseases (NPTCCD) is a central level organization in the Ministry of Health and Indigenous Medical Service, which is headed by the Director/NPTCCD. The program functions under the Deputy Director General (Public Health Services) 1 of the Ministry of Health. The central unit of the NPTCCD, National Tuberculosis Reference Laboratory (NTRL), Central Drug Stores (CDS) of the NPTCCD, District Chest Clinics (DCCs) of Colombo and Gampaha are under the direct administrative purview of the Director NPTCCD.

Tuberculosis (TB) continues to be a public health problem in the country and the estimated incidence in 2022, is 63/100,000 population. Around 7000-9000 cases are reported every year and the ratio for new EPTB to new pulmonary is 1:2.9 in 2022. In 2022, there were 8342 total TB cases, of which 93% (n=7762) were new TB. Around 73% (n=6062) of total TB cases are pulmonary TB (PTB) while 73.2% of PTB are bacteriologically confirmed (n=4442). There are 16 Multi Drug Resistant TB (MDR) patients reported in the country in 2022 and the number of people with TB/HIV co-infection is 40 (Number detected by screening in both TB and HIV programs).

The NPTCCD is the national focal point for prevention and control of TB in the country. The services are provided through a network of 26 District Chest Clinics, 2 sub chest clinics, 108 branch clinics and 189 microscopic centers. Diagnostic culture facilities are available at National TB Reference Laboratory (NTRL) and Intermediate TB Laboratories at Rathnapura, Kandy, Jaffna and Galle.

#### **Key messages:**

- In 2022, 8110 incident cases (new and relapse cases; 36.6/100 000 population) were notified to the National Programme with a reported treatment coverage of 58.1% and a gap of over 5000 cases between the number notified and the number estimated for the country by the WHO.
- The observed inadequacies were
  - Less referrals from primary health care settings for sputum investigations

leading to underutilization of microscopic centers.

- Inadequate contact screening.
  - Maldistribution of trained manpower.
  - Poor involvement of non-governmental organizations and Community based organizations at district level.
  - Inadequate involvement of private sector.
- Treatment success rate for cohort of patients registered for treatment in 2021 was 78.1% and the high death rate (9%) has contributed mainly to observed rate. Clinical practice has shown late presentation and comorbid factors as main reasons for deaths.

NPTCCD is responsible for infrastructure development and financial management of the institutions under its direct administrative purview. It also provides technical guidance and financial assistance from funds obtained from donor agencies for implementation of the TB control activities at the district level. In addition, NPTCCD is responsible for formulation of policies and guidelines for control of TB and other respiratory diseases and for planning, implementation, monitoring and evaluation of the TB control activities carried out in the entire country. TB surveillance is another main activity carried out by the NPTCCD. It also acts as a coordinating body between the central ministry and provincial health sector and other governmental and nongovernmental organizations.

NPTCCD carries out training of medical and paramedical staff engaged in TB care and carries out public awareness through various channels of communication. The Government of Sri Lanka is the main source of funding for the NPTCCD. In addition, TB control activities are supported by the Global Fund for AIDS, Tuberculosis and Malaria (GFATM). World Health Organization (WHO) and SAARC provide support for research and capacity development of healthcare staff involved in TB related activities.

### **Sustainable Development Goals & End TB Strategy**

Sustainable Development Goals (SDGs) were set up in 2015 by the United Nations General Assembly and is intended to be achieved by 2030. It comprises 17 interlink goals. A goal for 'Good health' is included in SDG 3 to ensure healthy lives and promote well-being for all at all ages and includes 13 targets which are set for the period of 2016-2030. TB is described in target 3.3: "By 2030, end the epidemics of AIDS, tuberculosis, malaria and neglected tropical diseases and combat hepatitis, waterborne diseases and other communicable diseases". The post 2015, Global TB strategy aims to end the global TB epidemic by 2035 and is linked with SDG. The milestones and targets were set under three measurable indicators (Table 1).

The current National Strategic Plan (NSP) for 2021 – 2025, was developed in line with achieving the above stated goals. The stated objectives for the five-year period are as follows.

1. To find and successfully treat, on average, between 2021 and 2025, 10,000 cases of drug sensitive TB annually including 600 children.
2. To successfully treat, on average, each year between 2021 and 2025, 11,600 eligible cases for TB preventive treatment (TPT).
3. To properly engage the private sector in TB diagnosis and care, and ensure by end 2025, 30% of all cases notified are referred from the private sector.
4. To strengthen monitoring and evaluation of TB control activities at all levels.
5. To significantly increase the quality and quantity of operational research studies on TB.
6. To significantly improve the organization and management and control of TB activities.

The targets and milestones to End TB are as follows:

*Table 1: Targets and Milestones to end TB*

<b>Indicator</b>	<b>Milestones for 2020</b>	<b>Milestones for 2025</b>	<b>Milestones for 2030</b>	<b>End TB targets for 2035</b>
Percentage reduction in the absolute number of TB deaths (baseline 2015)	35% reduction of deaths	75% reduction of deaths	90% reduction of deaths	95% reduction of deaths
Percentage reduction in the TB incidence rate (baseline 2015)	20% reduction of incidence	50 % reduction of incidence	80% reduction of incidence	90% reduction of incidence (10:100,000 cases)
Percentage of TB patients and their households experiencing catastrophic costs due to TB	0%	0%	0%	0%

\*Based on WHO Global Tuberculosis Report 2022

## 2. METHODS

### WHO revised classification of TB

Sri Lanka adopted revised WHO classification of TB of 2013 from 1st of January 2015 and reporting of information was started with the cohort of patients registered in 2015.

A case of tuberculosis is defined as “A patient in whom TB has been either bacteriologically confirmed in laboratory or clinically diagnosed based on a clinician’s decision taking into account clinical picture, results of other investigations and risk factors”.

#### ➤ **Bacteriologically confirmed TB**

A patient whose sputum or another biological specimen is positive for AFB by smear microscopy or culture or WHO Approved Rapid Diagnostics (WRD) such as X-pert MTB/RIF.

#### ➤ **Clinically diagnosed TB**

A patient who does not fulfil the criteria for bacteriological confirmation but has been diagnosed with active TB by a clinician and after consultation with a Consultant Respiratory Physician and decided to treat the patient with a full course of TB treatment.

### Classification based on anatomical site of the disease

#### ➤ **Pulmonary tuberculosis (PTB)**

Any bacteriologically confirmed or clinically diagnosed case of TB involving the lung parenchyma or the tracheobronchial tree with or without the involvement of any other organs in the body.

#### ➤ **Extra pulmonary tuberculosis (EPTB)**

Any bacteriologically confirmed or clinically diagnosed case of TB involving organs other than the lung parenchyma or tracheobronchial tree, e.g. pleura, lymph nodes, abdomen, genitourinary tract, skin, bones and joints, meninges.

### Classification based on history of previous TB treatment

#### ➤ **New patients**

A patient who has never taken treatment for TB

OR

A patient who has taken anti-tuberculosis drugs for less than one month

New patients may have positive or negative bacteriology and may have disease at any anatomical site.

➤ **Previously treated patients**

Patients, who have received 1 month or more of anti-TB drugs in the past are classified under this category. They are further classified by the outcome of their most recent course of treatment.

- **Relapse**

Patients who have previously been treated for TB, were declared cured or treatment completed at the end of their most recent course of treatment, and are now diagnosed with a recurrent episode of TB.

- **Treatment after failure**

Patients who have previously been treated for TB and whose treatment failed during or at the end of their most recent course of TB treatment.

- **Treatment after loss to follow-up**

Patients who have previously been treated for TB and were declared lost to follow-up at the end of their most recent course of treatment. (These were previously known as treatment after default patients.

- **Other previously treated patients**

Patients who have previously been treated for TB but whose outcome after their most recent course of treatment is unknown or undocumented.

➤ **Patients with unknown previous TB treatment history**

Patients who do not fit into any of the categories listed above

## **2.1 Notification system:**

TB notification collects information on each reported case of TB for the surveillance of TB in Sri Lanka. It is carried out in both inpatient and OPD patients. Once the patient is sent home, it is important in follow up of patient, defaulter tracing and for range PHI to carryout field investigation targeting compliance, contact tracing, health education and infection control activities.

### **➤ TB Case Notification**

TB is a notifiable disease since 1948. NPTCCD receives case notifications in a special form (Health 816 A) from District Chest Clinics, other government health institutions and from private health institutions. Once a TB patient is diagnosed at a chest clinic, he or she should be registered in the District TB Register and should be notified to Central unit of the NPTCCD and to National Epidemiological Surveillance System through Medical Officer of Health. Patients diagnosed at other institutions are also referred to the relevant chest clinics for registration, notification and further management.

### **➤ TB Death Notification**

TB deaths are notified to the central unit by Health 814.A detailed report on deaths that occurred among TB patients during the period of treatment is collected by form TB 17. Deaths due to TB are also notified to the Registrar General's Department through a vital registration system.

## **Monthly and Quarterly Records and Returns**

Data on case detection (TB-08), sputum conversion (TB-09), treatment outcome (TB-10), program management (TB-12), and TB and Non-TB wards (TB-13) are collected quarterly from District Chest Clinics. The electronic patient information management system (ePIMS) was introduced to the system in 2018. The ePIMS consists of five major modules. At present, all the districts are entering data into the ePMIS in addition to maintaining paper-based records and returns.



TB screening activities in prisons and OPD returns on TB suspects are collected monthly on the standard data collection forms. Data on culture specimens are sent from NTRL to the Central Unit. DTCOs are responsible for sending completed returns and reports accurately and timely.

### **Presentation of Data**

NPTCCD analyses the data and compiles the national reports. Performance at district level is discussed at the review meetings held quarterly at NPTCCD as well as at the district reviews held annually in respective districts.

### **Dissemination of Data**

NPTCCD provides information to government and international organizations such as Epidemiology unit and other units of Ministry of Health, Central Bank of Sri Lanka, WHO, SAARC, STAC, GFATM etc.

In addition, information on TB is provided to provincial and regional health authorities and DTCOs for further reference and interventions.

## **2.2 Treatment outcomes for TB patients**

Treatment outcomes for TB patients (excluding patients treated for RR-TB or MDR-TB using the second-line anti-TB drugs) are as follows:

All bacteriologically confirmed and clinically diagnosed TB cases should be assigned an outcome from this list except those with RR-TB or MDR-TB3, who are placed on a second-line drug regimen.

### **Cured**

A pulmonary TB patient with bacteriologically confirmed TB at the beginning of treatment who is smear-negative or culture-negative in the last month of treatment and on at least one previous occasion.

**Treatment completed**

A TB patient who completed treatment without evidence of failure BUT with no record to show that sputum smear or culture results in the last month of treatment and on at least one previous occasion are negative, either because tests were not done or because results are unavailable.

**Treatment failed**

A TB patient whose sputum smear or culture is positive at month 5 or later during treatment.

**Died**

A TB patient who dies for any reason before starting or during the course of treatment.

**Lost to follow-up**

A TB patient who did not start treatment or whose treatment was interrupted for 2 consecutive months or more.

**Not evaluated**

A TB patient for whom no treatment outcome is assigned. This includes cases for whom the treatment outcome is unknown to the reporting clinic.

**Treatment success**

The sum of cured and treatment completed.

**The main indices used to measure the progress in TB control are,**

- Case notification Rate
- Case Detection Rate (treatment coverage)
- Treatment Success Rate
- Sputum Conversion Rate
- Lost to follow up Rate
- Death Rate

### 2.3 Notification rate of all TB cases

The notification rate of all TB cases is defined as number of all forms of TB cases notified in a given year out of the mid-year population of the country in the same year.

$$\frac{\text{Number of all TB cases notified during the year}}{\text{Mid-year population for the same year}} \times 100,000 \text{ population}$$

### Case Detection Rate

The term “*detection*” as used in this report, means that a patient is diagnosed as having TB and is reported to the NPTCCD by TB-08.

Case Detection Rate is defined as the “percentage of the total number of incident TB cases notified out of the total number of estimated incident cases of TB during the given year” as per the WHO country profile.

### Incidence of TB

The Incidence of TB is defined by the WHO as the number of new and relapse cases reported in a specified time period.

$$\text{Case Detection Rate} = \frac{\text{No. of all forms (new / relapse) of TB cases notified during the specified year}}{\text{Estimated total number of incidence cases of TB for the same year}} \times 100$$

(63.0 per 100,000 population).

### Treatment Success Rate

Treatment Success Rate is defined as the proportion of TB cases registered in a given year that successfully completed their entire course of treatment with or without bacteriological confirmation of cure (“cured” + “treatment completed”).

$$\text{Treatment Success Rate} = \frac{\text{Number of patients who have successfully completed treatment in the given period}}{\text{Number of patients registered in the same period}} \times 100$$

### Sputum Conversion Rate

Sputum Conversion rate is the percentage of smear-positive pulmonary TB cases registered in a specified period that converted from smear positive to smear negative at the end of the intensive phase of treatment.

$$\text{Sputum Conversion Rate} = \frac{\text{Number of smear-positive pulmonary TB cases Registered in a specified period that are smear negative at the end of the intensive phase of Treatment}}{\text{Total number of smear-positive pulmonary TB cases registered for treatment in the same period}} \times 100$$

### Lost to follow up Rate

The Lost to follow up Rate is defined as the percentage of TB cases registered in a specified period that interrupted treatment for more than two consecutive months.

$$\text{Lost to follow up Rate} = \frac{\text{Number of TB cases registered in a specified period that interrupted treatment for more than two consecutive months}}{\text{Total number of TB cases registered in the same period}} \times 100$$

### Death Rate

The Death rate is defined as the percentage of TB cases registered in a specified period that died from any reason during the course of treatment.

$$\text{Death Rate} = \frac{\text{Number of TB cases registered in a specified period that died from any reason during the course of the treatment}}{\text{Total number of TB cases registered in the same period}} \times 100$$

## 3. RESULTS

### 3.1 Surveillance of Tuberculosis

#### ➤ TB Case Notifications

Cases of all forms of Tuberculosis should be notified to the NPTCCD using the H816-A form. a total of 5126 was notified to NPTCCD in 2022. In addition, all the TB cases registered at a district chest clinic are notified to the NPTCCD via TB-08. In 2022, this number was 8342.

#### ➤ TB Death Notification (H 814)

During the year 2022, 535 TB deaths were notified by H814.

### 3.2 Incidence of Tuberculosis

The incidence rate (new and relapse) of TB in Sri Lanka for 2022 was 36.6 per 100,000 population. The incidence rate has increased by 25.7% compared to the previous year (Figure 1). The proportion of relapse cases among incident TB patients in 2022 (4.3%) shows an increase compared to the same proportion in 2021 (2.4%).

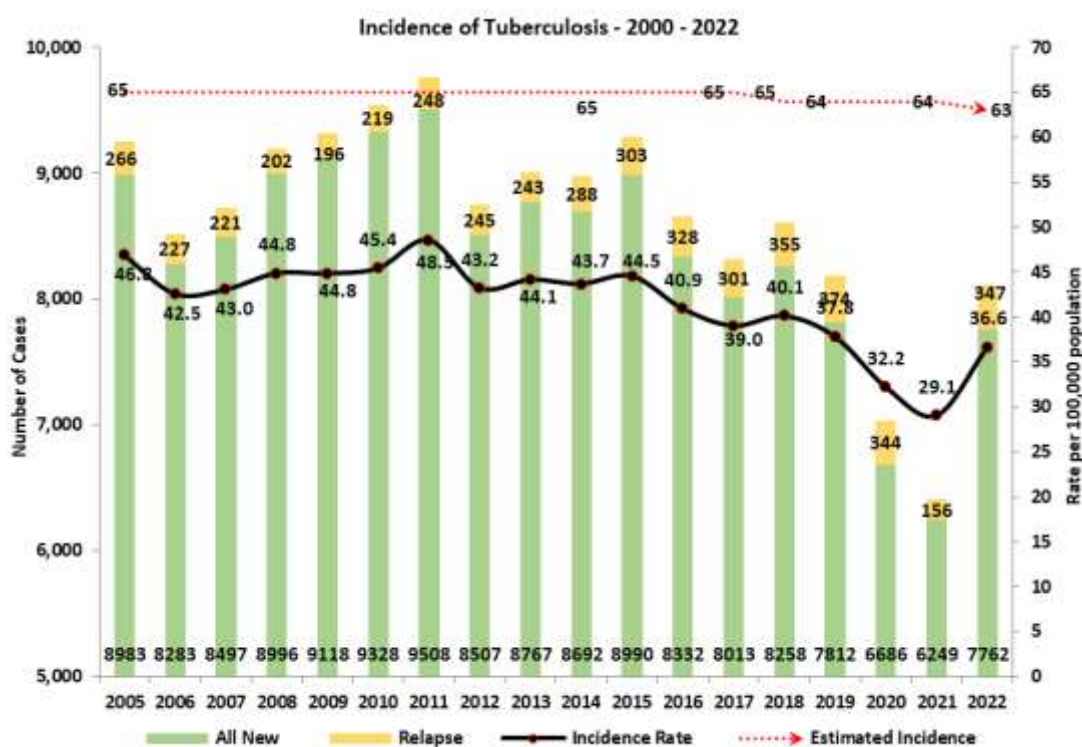


Figure 1: Tuberculosis incidence rates from 2005 to 2022

### 3.3 Case Detection of TB

The total number of all forms of TB cases reported from DCCs was 8342. This is an increase of 23% from the previous year total number (Figure 2). Of this, 7762 (93%) were new cases, 568 (6.8%) were previously treated cases and 12 (0.1%) were cases with unknown treatment history.



Figure 2: Case detection of TB by type in 2005 - 2022

Among the 7762 new TB cases, 5767 (69%) were new pulmonary TB (PTB) cases and the rest 1995 (24%) were new extra pulmonary TB (EPTB) cases. Of the 5767 new PTB cases, 4211 (73%) were new bacteriologically diagnosed, while 1556 (27%) were clinically diagnosed (Figure 3). Of the 4211 new bacteriologically confirmed PTB cases, 3718 (88%) were sputum microscopy positive, 116 (3%) were sputum negative culture positive, and 377 (9%) were xpert MTF/RI positive cases. Out of the previously treated cases of 568, 395 (69.5%) were bacteriologically confirmed PTB, 94 (16.5%) were clinically diagnosed PTB and 79(14%) were EPTB cases.

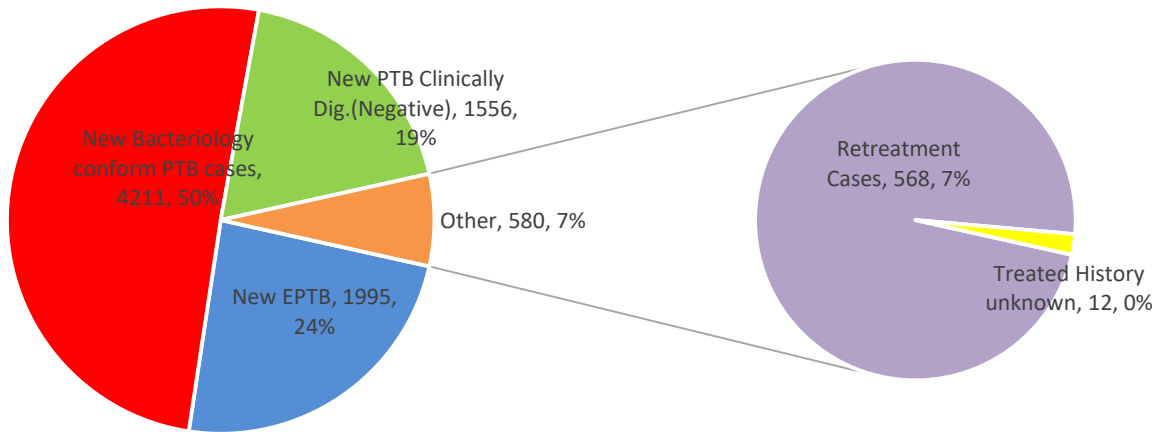


Figure 3: Case Detection of TB by Type in 2022

TB case detection varied widely among districts (Figure 4). The highest number of TB cases was reported from Colombo (n=2190; 26.3%), followed by Gampaha (n=1100; 13.2%), Kandy (n=559; 6.7%) and Kalutara (n=559; 6.7%).

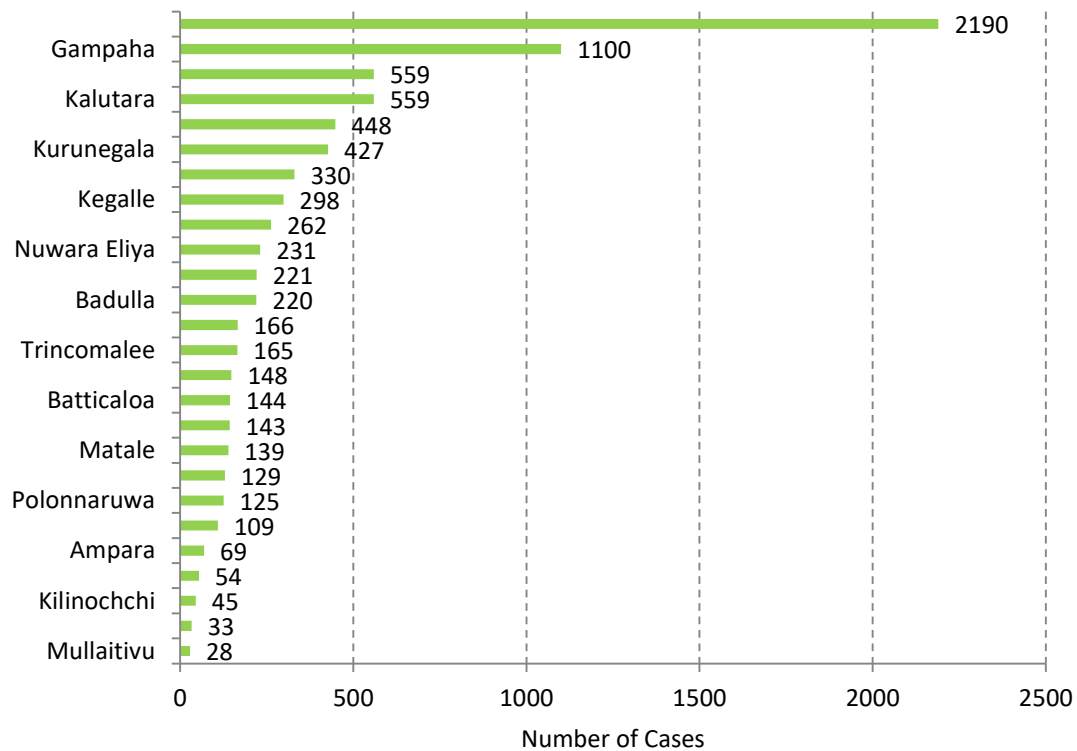


Figure 4: TB case detection by district of registration in 2022



Colombo district also accounted for the highest number of relapse cases of 99, which was 28.5% of total relapse cases. Colombo also reported the highest number of cases in categories of ‘treatment after failures’ (n=37, 35.2%) and lost to follow up cases (n=38; 43.1%) (Table 9). Lowest numbers of TB cases were reported from the Northern Province, with Mullaitivu district reporting 28 cases (0.3%) and Mannar district reporting 33 cases (0.4%).

Colombo district also accounted for the highest number of relapse cases of 75, which was 26% of total relapse cases. Colombo also reported the highest number of cases in categories of ‘treatment after failures’ (n=42, 37.8%) and lost to follow up cases (n=55; 62.5%) (Table 9). Lowest numbers of TB cases were reported from the Eastern province, with Mullaitivu district reporting 25 cases (0.4%) and Mannar district reporting cases (n= 29, 0.4%).

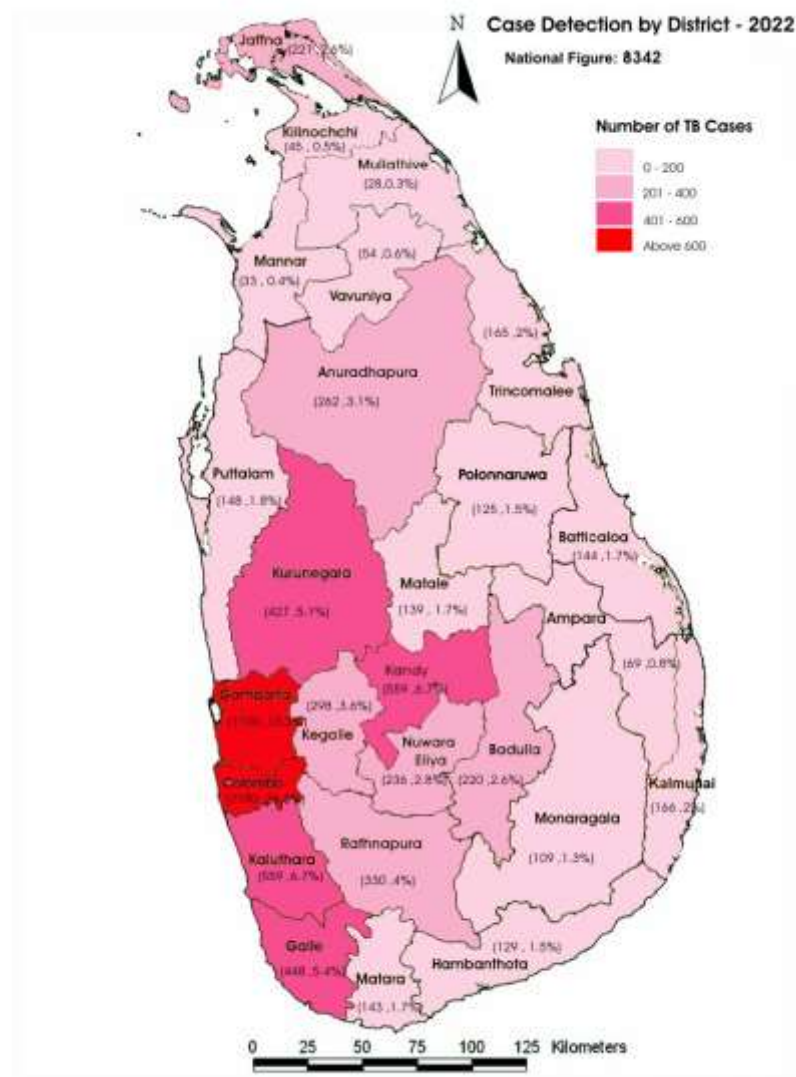


Figure 5: The map of Sri Lanka with TB case detection by district – 2022

## New TB Cases

The distribution of categories of new TB cases among districts varied a lot (Figure 6). The proportion of new TB cases that were bacteriologically confirmed ranged from 80.4% in Kalmunai district to 28.6% in Mullaitivu district. Likewise, the proportion of clinically diagnosed among new TB cases ranged from 34.7% in Hambantota district to 8.2% in Rathnapura district. The highest proportion of EPTB among the new cases were reported from Mullaitivu district (42.9%), while the lowest proportion of 15.2% was reported from Trincomalee district.

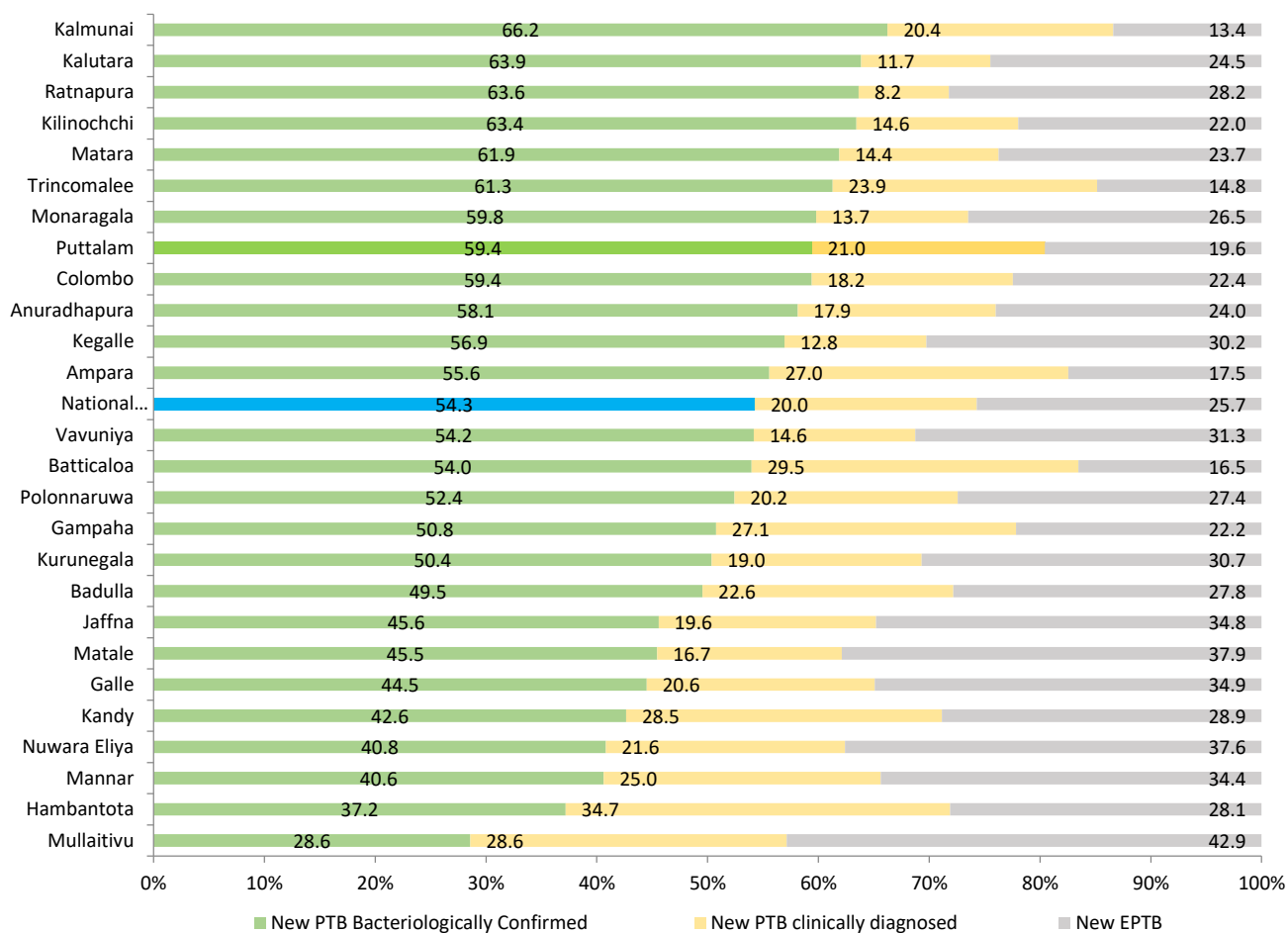


Figure 6: Percentage distribution of new cases of TB by type and district in 2022

➤ **Bacteriology confirmed New Pulmonary TB cases**

The highest number of bacteriologically confirmed pulmonary TB cases 1180 (47.6 per 100,000 population) was reported from Colombo district. Second highest number, 506 of bacteriologically confirmed pulmonary TB cases was reported from Gampaha district and the district rate is less than half of that of Colombo district. However, the rate in Kalutara district is higher compared to Gampaha (Figure 7).

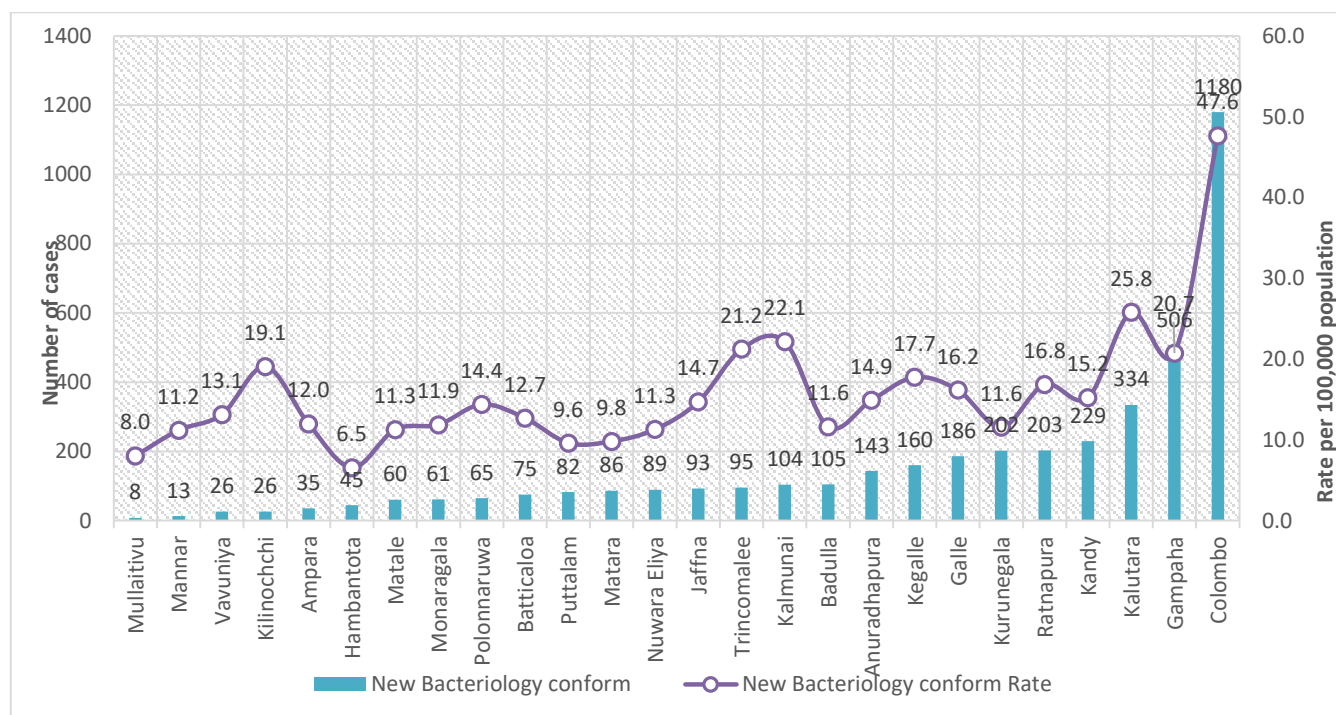


Figure 7: Distribution of new bacteriological confirmed pulmonary TB cases by district – 2022

➤ **Clinically Diagnosed New Pulmonary TB**

A total of 1556 (19% of total new cases) new PTB cases were clinically diagnosed in 2022. The highest number of clinically diagnosed cases and rate both were reported from Colombo district (n=361) with a rate of 14.6 per 100,000 population. (Figure 8).

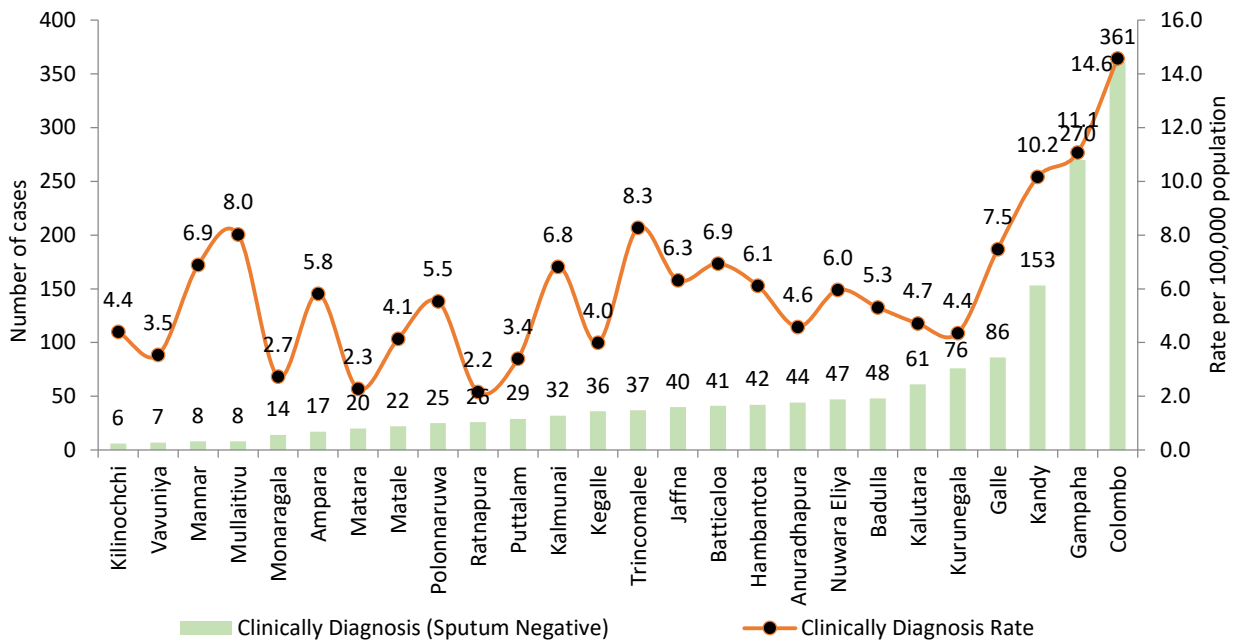


Figure 8: Distribution of clinically diagnosed new PTB Cases by district 2022

### ➤ Age and Sex Distribution of New TB Cases

The highest number, 1689 (21.7%) of new TB cases was in 55-64 age group. The lowest number was in 0-14 age group (n=184, 2.4 %). Out of 7762 new cases, 4213 (54.2%) were in the economically productive age group of 15-54. The number of males with TB (n=4886, 62.9%) were as twice as the number among females (n=2876, 37.1%). The highest number of new TB cases among both sexes were reported in the age group of 55-64 years. In contrast, more female TB patients were reported than males among the younger age groups of 0-14 and 15 – 24 years (figure 9).

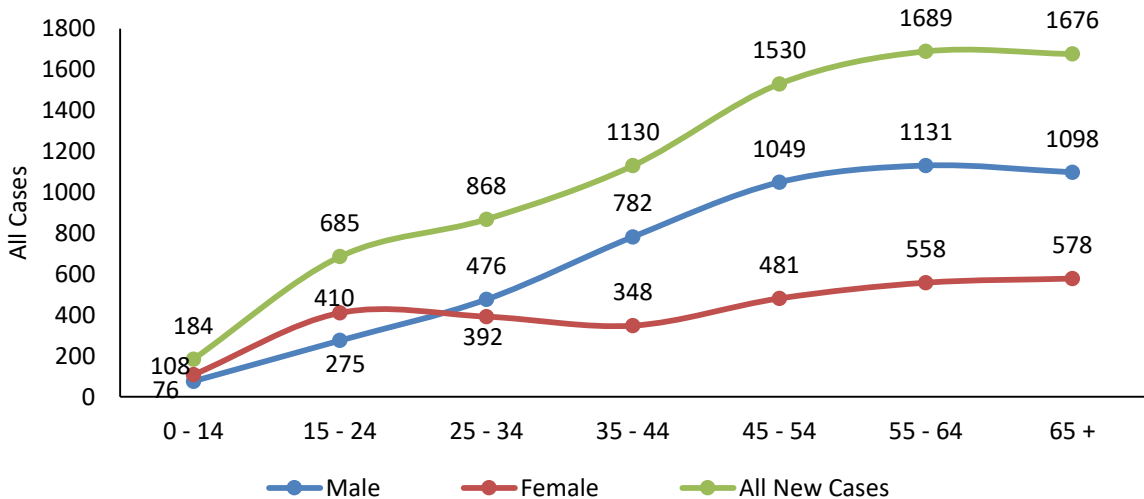


Figure 9: Distribution of all new TB cases by age groups and sex in 2022

## Extra Pulmonary TB

### New EPTB Case Detection

A total of 1995 new EPTB cases were reported in 2022. Colombo district accounted for the highest number (n=446), followed by Gampaha district (n=221) and Kandy district (n=155). The highest rate (18 per 100000 population) of EPTB was reported from Colombo district. The lowest numbers of EPTB cases (n=9) was reported from the of Killinochchi district (Figure 10).

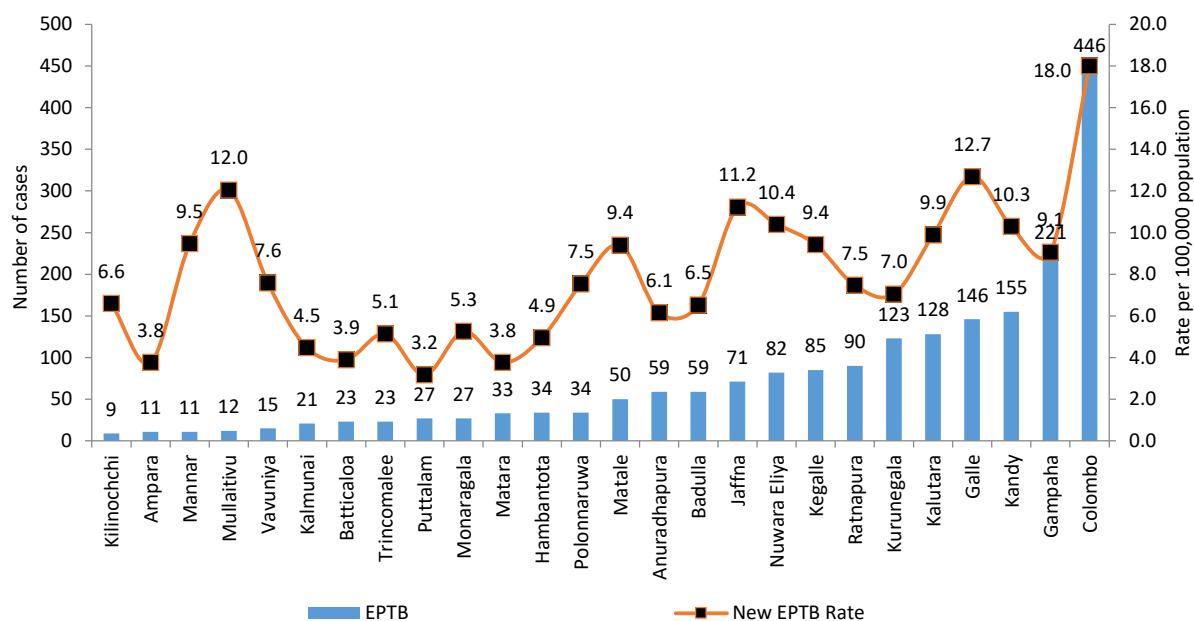


Figure 10: Distribution of new extra Pulmonary TB cases by district in 2022

### Sites of EPTB Cases

Out of all EPTB cases, TB of respiratory tract confirmed by bacteriologically and histologically (ICD code A 15), accounted for 94 cases (4.5%). TB respiratory tract, not confirmed by bacteriologically or histologically (ICD code A16) were 522 (25.2%). In addition, there were 216 (10.4%) cases of nervous system TB, 1069 (51.7%) cases of TB of other organs (Table 2).

**Table 2: Distribution of All Cases of Extra Pulmonary Tuberculosis by Site in 2022**

ICD-10 Code	Site	Number of Cases	Percentage
<b>A15: Respiratory tuberculosis, bacteriologically and histologically confirmed</b>		<b>94</b>	<b>4.5</b>
A15.4	Tuberculosis of intrathoracic lymph nodes	28	1.4
A15.6	Tuberculous pleurisy	66	3.2
A15.8	Other respiratory tuberculosis (mediastinal, nasopharyngeal, nose, sinus [any nasal])	0	0.0
A15.9	Respiratory tuberculosis unspecified	0	0.0
<b>A16: Respiratory tuberculosis, not confirmed bacteriologically or histologically</b>		<b>521</b>	<b>25.2</b>
A16.3	Tuberculosis of intrathoracic lymph nodes	63	3.0
A16.4	Tuberculosis of larynx, trachea and bronchus	125	6.0
A16.5	Tuberculous pleurisy	303	14.7
A16.8	Other respiratory tuberculosis (mediastinal, nasopharyngeal, nose, sinus [any nasal])	25	1.2
A16.9	Respiratory tuberculosis unspecified	5	0.2
<b>A17: Tuberculosis of nervous system</b>		<b>216</b>	<b>10.4</b>
A17.0	Tuberculous meningitis	144	7.0
A17.1	Meningeal tuberculoma	15	0.7
A17.8	Other tuberculosis of nervous system	33	1.6
A17.9	Tuberculosis of nervous system, unspecified	24	1.2
<b>A18: Tuberculosis of other organs</b>		<b>1069</b>	<b>51.7</b>
A18.0	<b>Tuberculosis of bones and joints</b>		
	Spinal TB (Includes Vertebral Column - M49.0*)	232	11.2
	Tuberculosis of other bones and joints (Excluding spinal TB)	47	2.3
A18.1	Tuberculosis of genitourinary system	50	2.4
A18.2	Tuberculous peripheral lymphadenopathy (TB adenitis)	471	22.8
A18.3	Tuberculosis of intestines, peritoneum and mesenteric glands	89	4.3
A18.4	Tuberculosis of skin and subcutaneous tissue	44	2.1
A18.5	Tuberculosis of eye	131	6.3
A18.6	Tuberculosis of ear	1	0.0
A18.7	Tuberculosis of adrenal glands	4	0.2
<b>A18.8 Tuberculosis of other specified organs</b>		<b>167</b>	<b>8.1</b>
18.8	Pericardium	10	0.5
	Disseminated	20	1.0
	Site not specified	11	0.5
	Brest	2	0.1
	Other	124	6.0
<b>Total</b>		<b>2067</b>	<b>100.0</b>

## Milliary TB

Figure 11 depicts the distribution of Primary and Milliary TB cases over the years, from 2010 – 2022. Figure 12 shows the distribution of Primary and TB meningitis cases over the years, from 2010 – 2022.

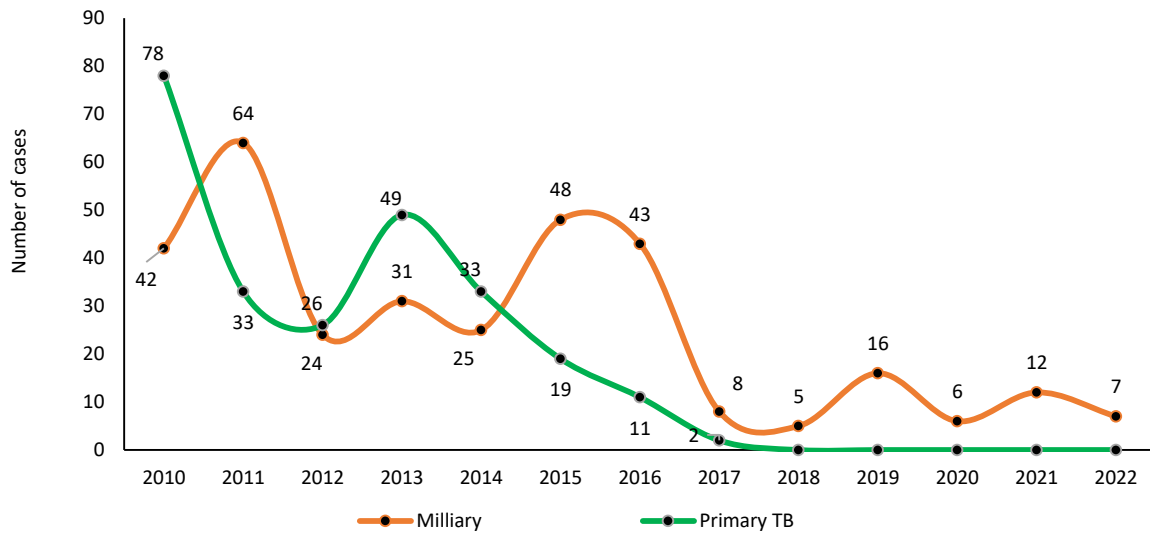


Figure 11: Distribution of Milliary and Primary TB cases from 2010-2022

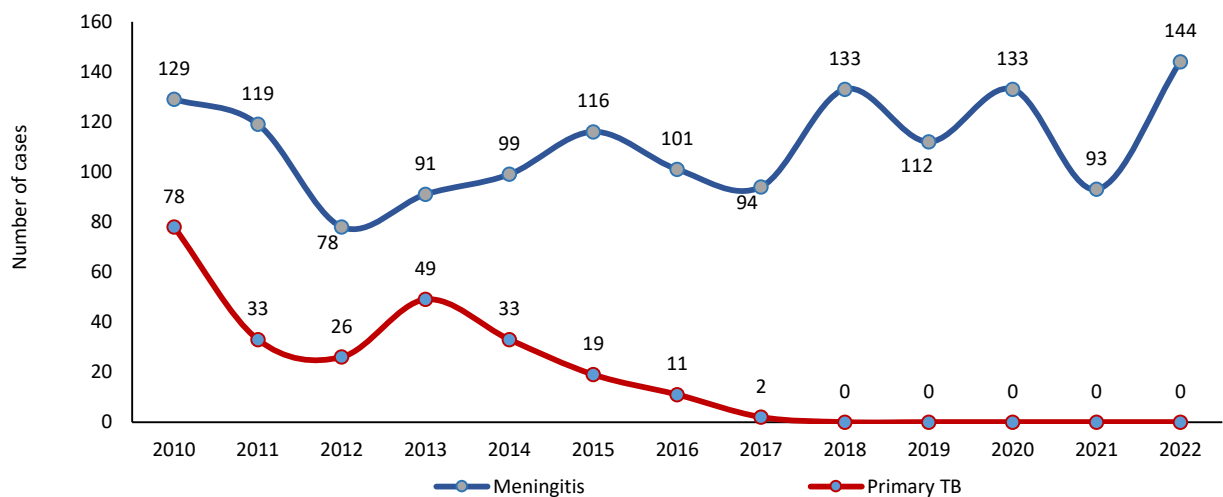


Figure 12: Distribution of Meningitis and Primary TB cases from 2010-2022

### Previously treated TB Cases

In 2022, 568 (6.8%) previously treated cases were reported. This consisted of 347 relapses (61%), 105 (18.4%) treatment after failure, 88(15.4%) treatment after lost to follow up, and 28 (4.9%) other previously treated cases.

The highest numbers of re-treatment cases were reported from Colombo district (n=192) and Gampaha district (n=102). Out of 88 loss to follow up cases, Colombo (n=38, 43.1 %) and Gampaha (n=24, 27.2 %) were the districts which reported the highest numbers of cases.

Colombo (n=99, 28.5%) district reported the highest number of relapse cases (Figure 13).

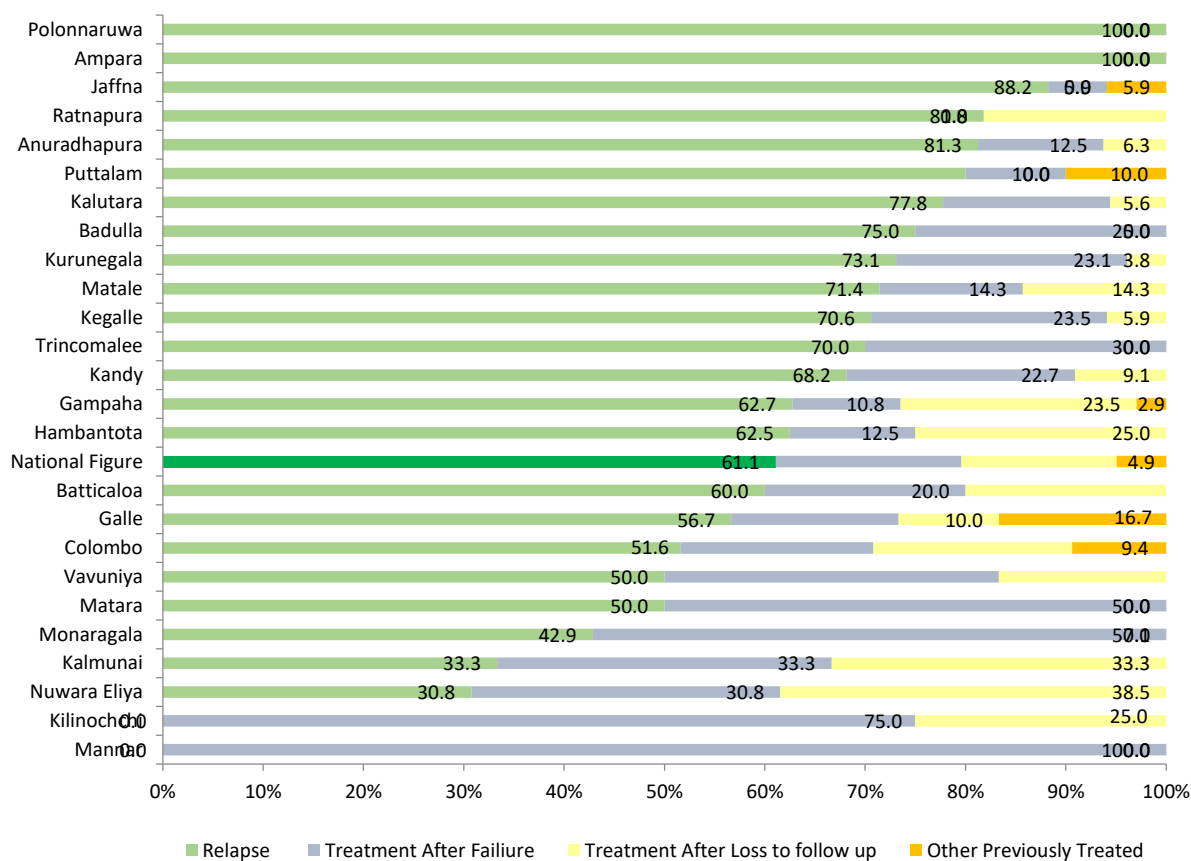


Figure 13: Proportion of previously treated categories by district in 2022



## Multi Drug Resistant Tuberculosis (MDR-TB)

The incidence of MDR-TB is low in Sri Lanka when compared to other countries in the SEARO region. Sixteen cases of MDR-TB were reported in year 2022 and all of them were enrolled in to treatment. Sri Lanka uses standardized treatment regimens for MDR TB patients according to international and local guidelines.

Table 3 describes the number of confirmed patients reported during 2010-2022 period and the proportion of patients enrolled into treatment, whereas, table 4 and figure 13 show outcomes of MDR TB patients registered during 2020.

*Table 3: MDR patients reported and their treatment enrollment 2010 - 2022*

	2010	2011	2012	2013	2014	2015	2016	2017	2018	2019	2020	2021	2022
Number of laboratories that confirmed MDRTB patients	8	12	5	4	13	13	17	25	12	21	14	10	16
Number enrolled in treatment in the same year	4	5	4	4	11	13	17	24	12	21	14	10	15
Number enrolled in treatment in the next year	1	4	1	-	-	-	-	-	-	-	-	-	-
Total number enrolled in treatment	5 63%	9 75%	5 100%	4 100%	11 85%	13 100%	17 100%	24 96%	12 100%	21 100%	14 100%	10 100%	15 94%

*Table 4: Outcome of MDR-TB for previous years*

Year	Total Registered	Treatment started	Trea-Success	Deaths	Death Rate	Failure / Rx with held	Faliure Rate	Lost to Follow up	Lost to Follow up Rate	Diag. Change	Diag. Change Rate
2013	4	2	50.0	1	25.0	1	25.0	0	0.0	0	0.0
2014	13	9	81.8	2	15.4	0	0.0	2	15.4	0	0.0
2015	13	10	76.9	2	15.4	0	0.0	1	7.7	0	0.0
2016	17	11	64.7	4	23.5	2	11.8	0	0.0	0	0.0
2017	25	17	68.0	6	24.0	0	0.0	1	4.0	1	4.0
2018	12	11	91.7	0	0.0	1	8.3	0	0.0	0	0.0
2019	21	13	68.4	5	23.8	0	0.0	0	0.0	2	9.5
2020	14	13	46.2	5	38.5	0	0.0	2	15.4		

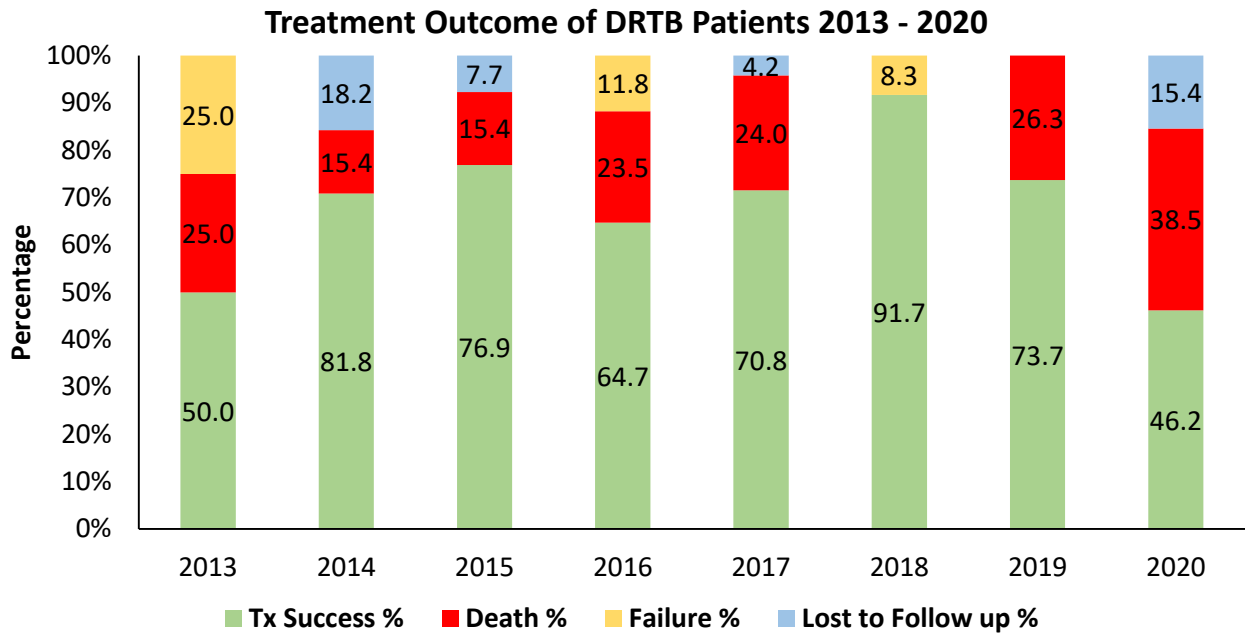


Figure 14: Number of MDR-TB cases against the treatment success rate-2013-2020

As illustrated in Figure 15, the highest number of MDR-TB cases are reported from the districts of Colombo and Gampaha in 2022.

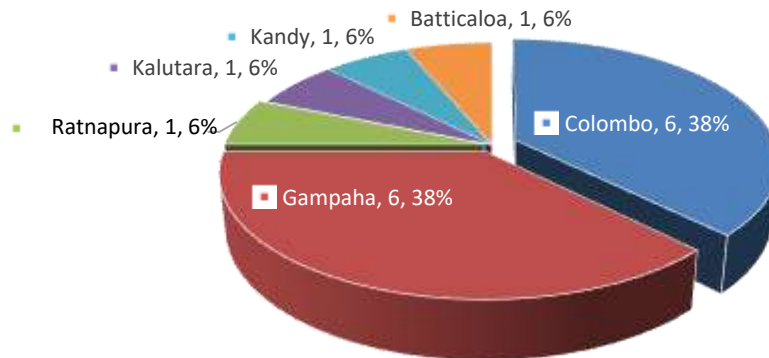


Figure 15: District distribution of Multi Drug Resistant Tuberculosis by District in 2022

## TB/HIV Co-Infection

HIV testing of all TB patients was made mandatory in 2013. In 2022, 6686 (80.1%) TB patients were screened for HIV (figure 16). Of these patients, 18 patients were found to be HIV positive. In addition, there were 22 patients with known HIV - status diagnosed with TB contributing to the total of 40 patients with HIV/ TB co-infection in 2022 (Figure 17).

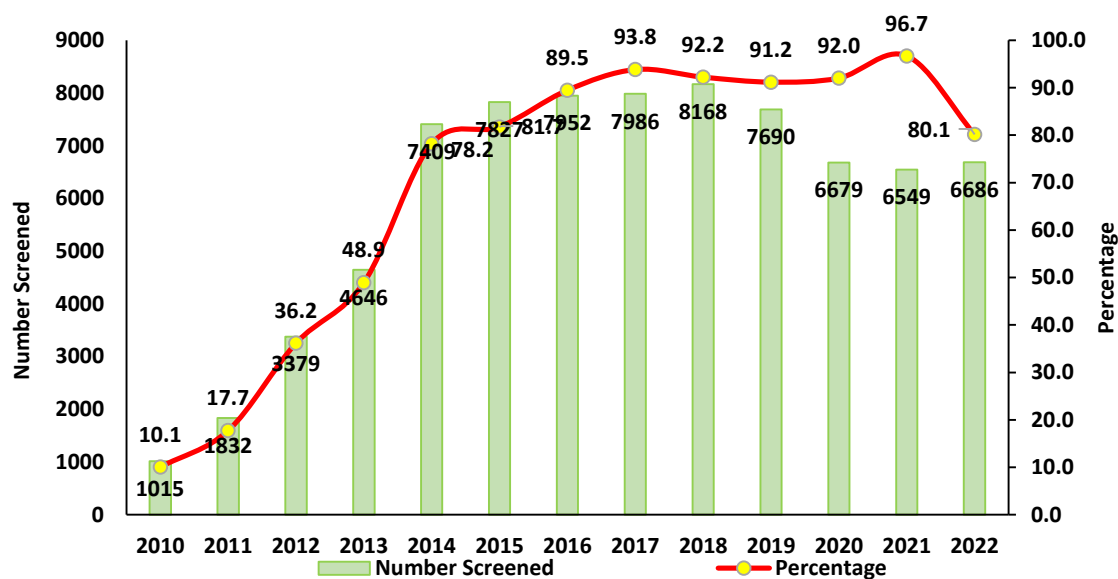


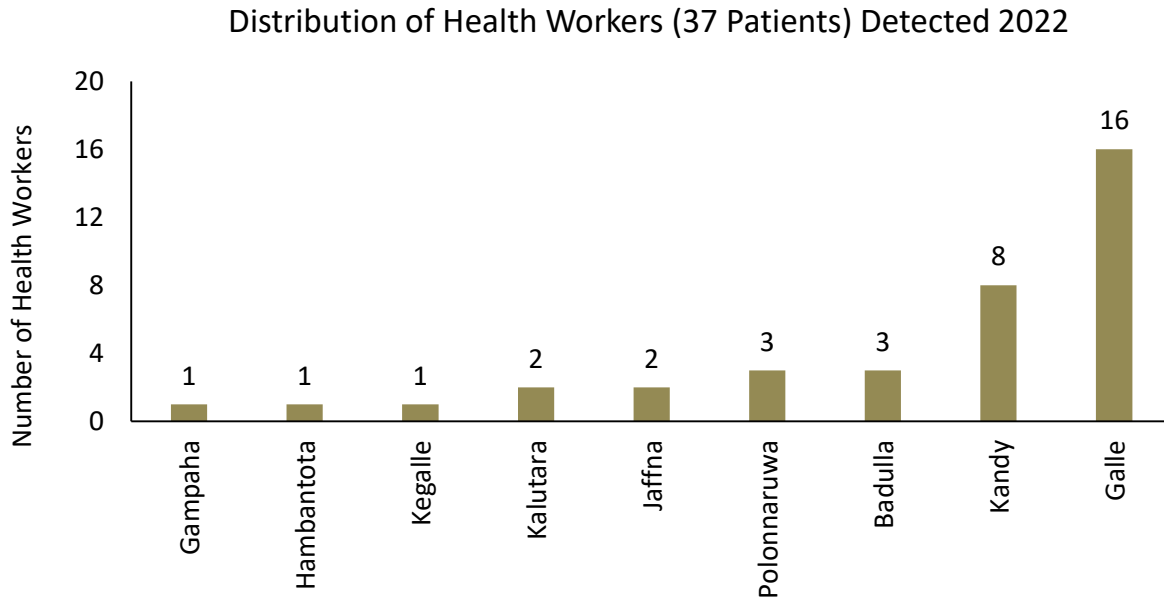
Figure 16: Percentages and Numbers of TB/HIV screening 2010-2022

Distribution of Cases by Districts - 2022	8342	%
No. TB Patients screened for HIV	6686	80.1
No. HIV positive	18	0.2
No. of HIV Pos Patients Referred From STD	22	0.3
<b>HIV Status ( Co-Infection Positive)</b>	<b>40</b>	<b>0.5</b>
HIV Status (Nagative)	6668	79.9
HIV Status (Not Documented)	1634	19.6

Figure 17: Number of TB patients detected by HIV and TB programmes

## TB Among Health Care Workers

In 2022, 37 health care workers had been diagnosed with TB. The number for 2021 was 36. Majority of them (n=16, 43.2%) were reported from Galle district, followed by Kandy district (8, 21.6%). The number for 2021 was 36. (Figure 18).



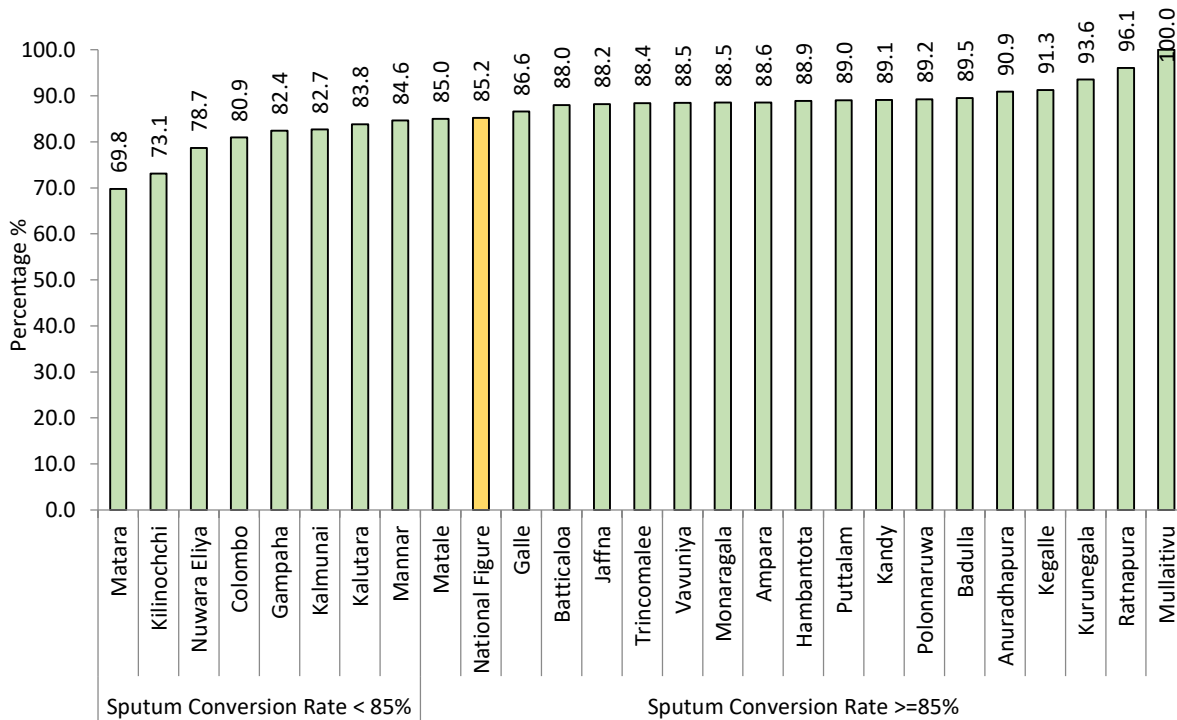
*Figure 18: Distribution of Health Workers (36 Patients) Detected 2022*

## **TB Among Foreign Nationals**

In 2022, 9 foreign nationals with TB were reported to NPTCCD from Colombo (7), Galle (1), Kandy (1).

## Sputum conversion among pulmonary TB patients

Sputum conversion is checked at the end of intensive phase. For new patients, it is checked at the end of two months (2 months). If not converted, sputum is checked at 3 months. Among previously treated patients, sputum conversion is checked at the end of 3<sup>rd</sup> month (3 months), (Figure 19) If not converted, it is checked at the end of 4 months.



*Figure 19: Sputum Conversion Percentage of New Smear-Positive Cases by District*

### 3.4 Treatment outcome of TB patients

As it takes more than one year to declare outcome status for some EPTB cases (TB meningitis, bone TB) outcome data are typically presented for the cohort one year prior to the current year. In this report, outcome data are presented for the cohort of patients registered in 2021.

#### Treatment Outcome of All Forms of TB (pulmonary & extra pulmonary TB)

Total number of cases registered for treatment in 2021 was 6771. Out of this, outcome of 433 (6.4%) patients was not evaluated. Outcome of rest of the patients is illustrated in figure 20.

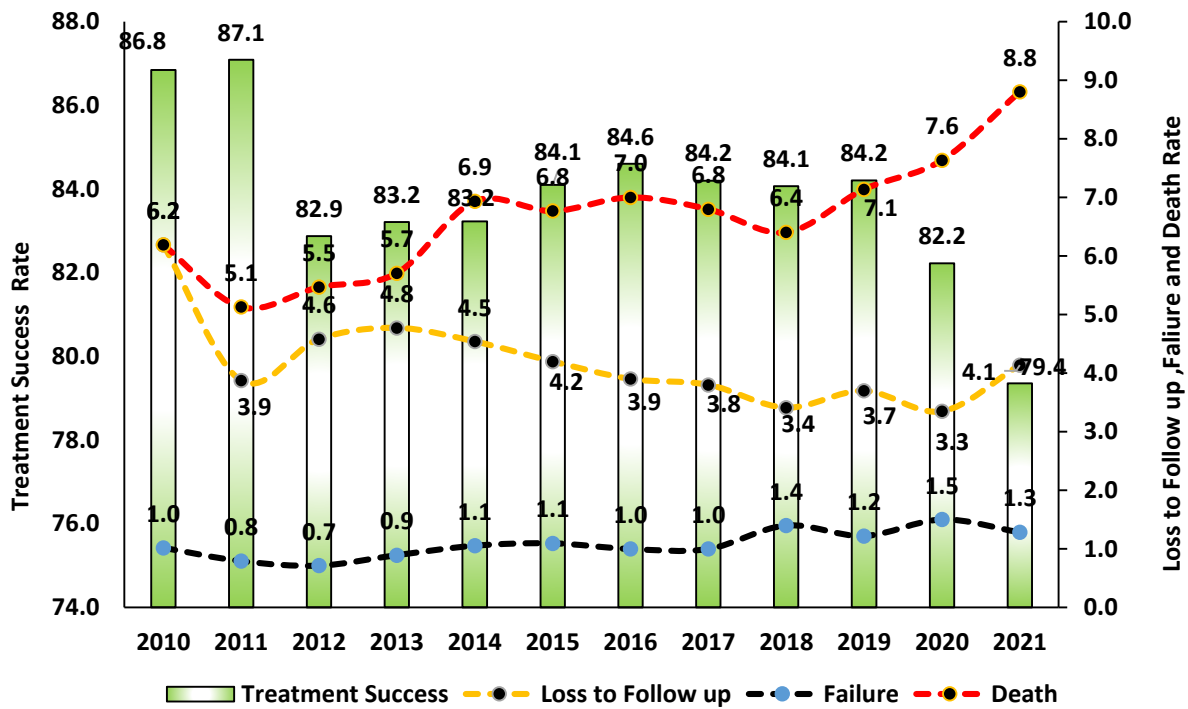


Figure 20: Treatment Success Rate of All Forms of TB in 2010-2021

➤ **Treatment Success Rate**

The cure rate among registered cases was 44.1% (2986 cases) and a further 35.3% (2390 cases) completed treatment, accounting for an overall treatment success rate of 79.4% (5376 cases). This national figure is below the global target of 85% for treatment success rate. Year 2021 rate is a drop of 20% from the year 2020, which was 82.2%.

There is a greater variation in treatment success rate among the districts, as depicted in Figure 21. Anuradhapura district reports the highest treatment success rate of 93.1%, while the lowest of 72.6% was reported from Gampaha (figure 21).

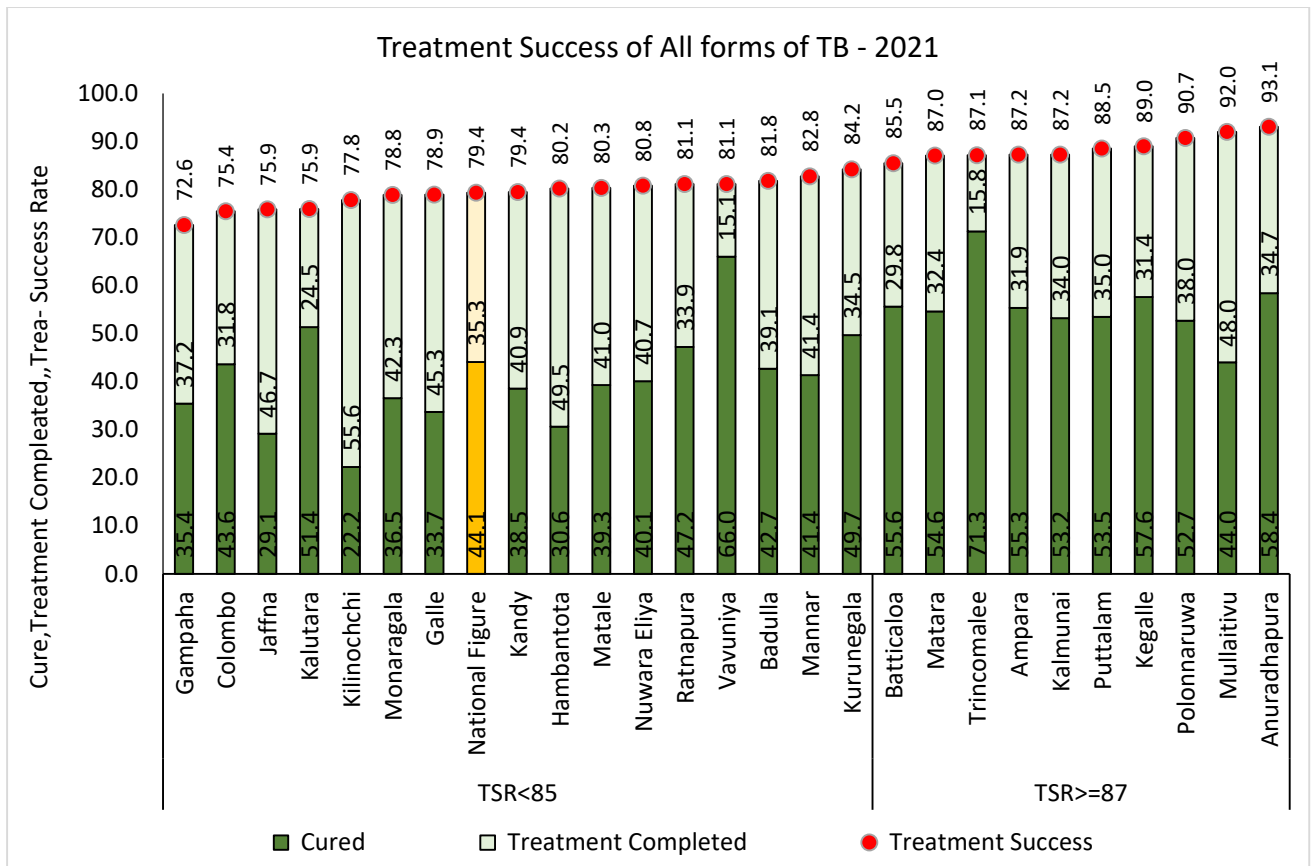


Figure 21: Treatment Success Rate of All Forms of TB by Districts in 2021



➤ **Treatment Failure Rate**

The treatment failure rate was 1.3% (n=88) in 2021. There is a decrease of (12%) in treatment failure rate observed compared to 2020. Vavuniya district (5.7%, n=3) accounted for the highest failure rate. Colombo district reported 32 patients with treatment failure among their 1690 total cases, giving a treatment failure rate of 1.9%. There were no patients with treatment failure in the districts of Nuwera-Eliya, Batticaloa, Puttalam (total cases=126), Mannar, Ampara and Mullaitivu , in the year 2021 (Table 21).

➤ **Lost to Follow Up Rate**

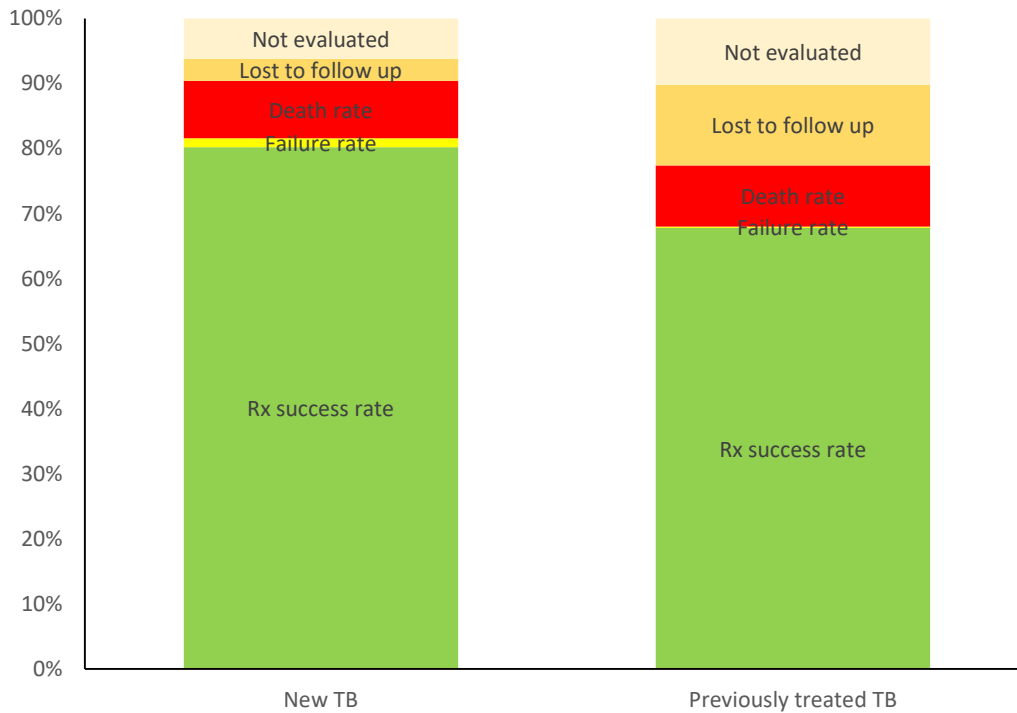
In 2021, the Lost to Follow Up rate was 4.1% (280), higher than 3.3% figure for the previous year 2020. The highest Lost to Follow Up rate, 9.1%, was reported in Colombo, which was the highest calculated Lost to Follow Up rate within the last five years. The next highest rate of 7.6% was reported from Gampaha. Vavuniya, Batticaloa, Trincomalee, Anuradhapura, Polonnaruwa, Mannar, and Mullaitivu reported zero cases of Lost to Follow Up (Table 21).

➤ **Death Rate**

Altogether, 598 deaths were reported among the patients with TB registered during the year 2021. However, the contribution of TB to the death was ruled out in 2021 and confirmed 287 deaths were not due to TB. Among the rest 311, the highest numbers were reported from Colombo (n=93), Kandy (n=37), Gampaha (n=25) and Kalutara (n=19) districts. (Table 21).

	<b>New TB</b>	<b>Previously treated TB</b>
<b>Rx success rate</b>	<b>80.4</b>	<b>67.5</b>
<b>Failure rate</b>	<b>1.4</b>	<b>0.2</b>
<b>Death rate</b>	<b>8.7</b>	<b>9.6</b>
<b>Lost to follow up</b>	<b>3.4</b>	<b>12.4</b>
<b>Not evaluated</b>	<b>6.1</b>	<b>10.2</b>

*Table 5: Treatment outcome summary of all forms of TB 2021*



*Figure 22: Treatment outcome summary of all forms of TB in 2021*

### **Treatment Outcome of new PTB Cases**

This section focuses on the treatment outcome rates among pulmonary TB (PTB) patients registered in 2021. In 2021, 4416 new PTB cases were registered for treatment. These patients' outcomes fell into following categories.

- Cured (n= 2746, 62.2%)
- Treatment completed (n= 812, 18.4%)
- Lost to follow up (n=174, 3.9%)
- Treatment failure (n=80, 1.8%)
- Died and confirmed as not due to TB (n=181, 4.1%)
- Died and confirmed as due to TB (n=219, 5.0%)
- Still on treatment/ diagnosis changed/ other (not evaluated) (n= 204, 4.6%)

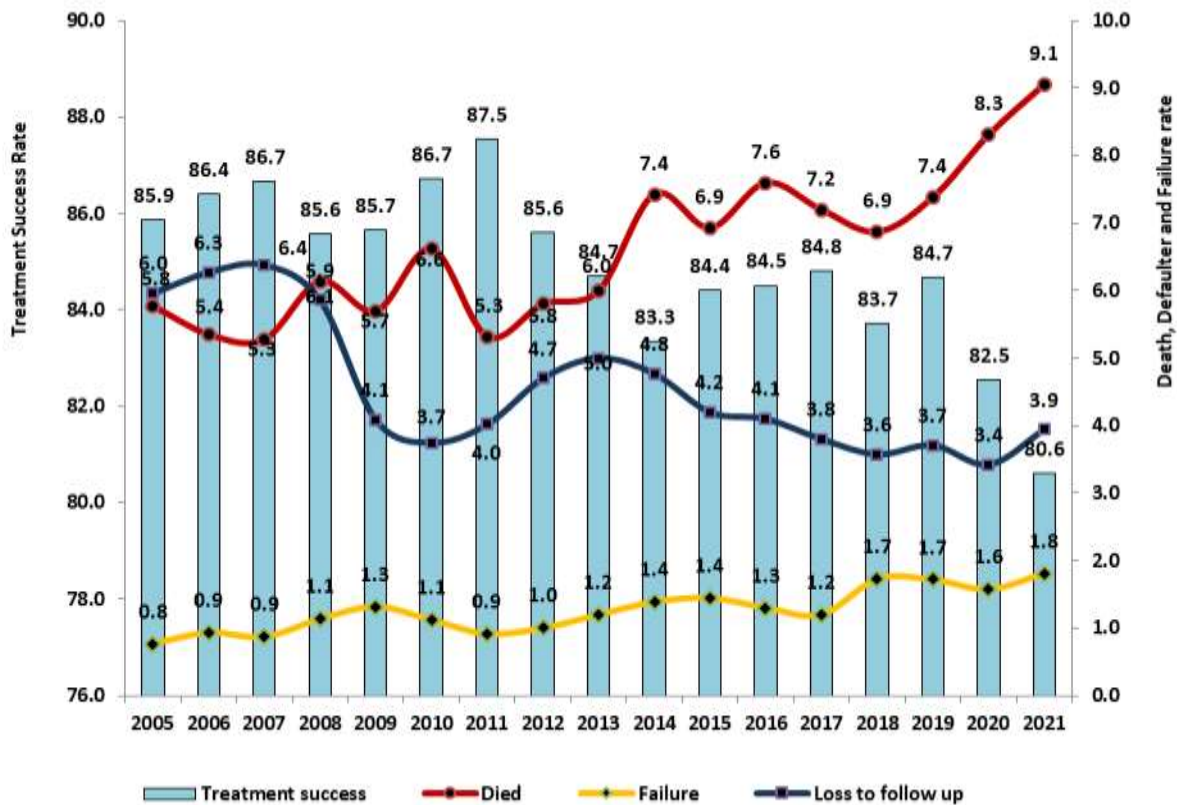


Figure 23: Treatment Outcome of Pulmonary TB Cases from 2005-2021

➤ **Treatment Success Rate**

Altogether, 2746 patients were cured and another 812 completed their treatment within the due period. This gives an overall treatment success rate of 80.6%. This is a reduction from the figure of the previous year, 82.5% (figure 23). Major contribution to the cure rates is from the districts of Trincomalee (86.5%), Anuradhapura (78.9%) and Puttalam (78.1%).

➤ **Treatment Failure Rate**

Of all registered PTB patients in 2021, treatment has failed among 80 patients, giving a failure rate of 1.8%, which is higher than the previous year figure of 1.6%. Highest failure rate of 7.7% was reported from Vavuniya district. None of the patients registered in Puttalam, Mannar, Mullaitivu, Ampara, Batticaloa, Matara Nuwera Eliya and Kilinochchi districts have reported treatment failures (Table 21).

➤ **Lost to Follow Up Rate**

The Lost to Follow Up rate among PTB patients was 3.9% (n=174) in 2021. The highest Lost to Follow Up case rate and the highest caseload was reported from Colombo district (8.4%, n=96). Except Colombo, Gampaha and Killinochchi all other districts reported rates below the global target for Lost to Follow Up of 5.0% (Table 21).

➤ **Death Rate**

From those who were registered as PTB patients in 2021, a total of 400 (9.1%) patients had died. Among those 396, TB was excluded from the cause of death in 181 patients. The rest 219 patients gave a death rate of 5.0% (Table 21).

**Treatment Outcome of New Bacteriology confirmed PTB cases**

Treatment outcomes were separately analyzed for the reported bacteriologically confirmed PTB cases. This number was 3555 for the year 2021.

➤ **Treatment Success Rate**

Of the 3555 cases, 2746 were cured after treatment, and further 168 completed the course of treatment within the due period. Altogether, this gives a treatment success rate of 82%. This is a reduction from the previous year figure of 83.8%. District variations in the treatment success rate is illustrated in the (figure 24).

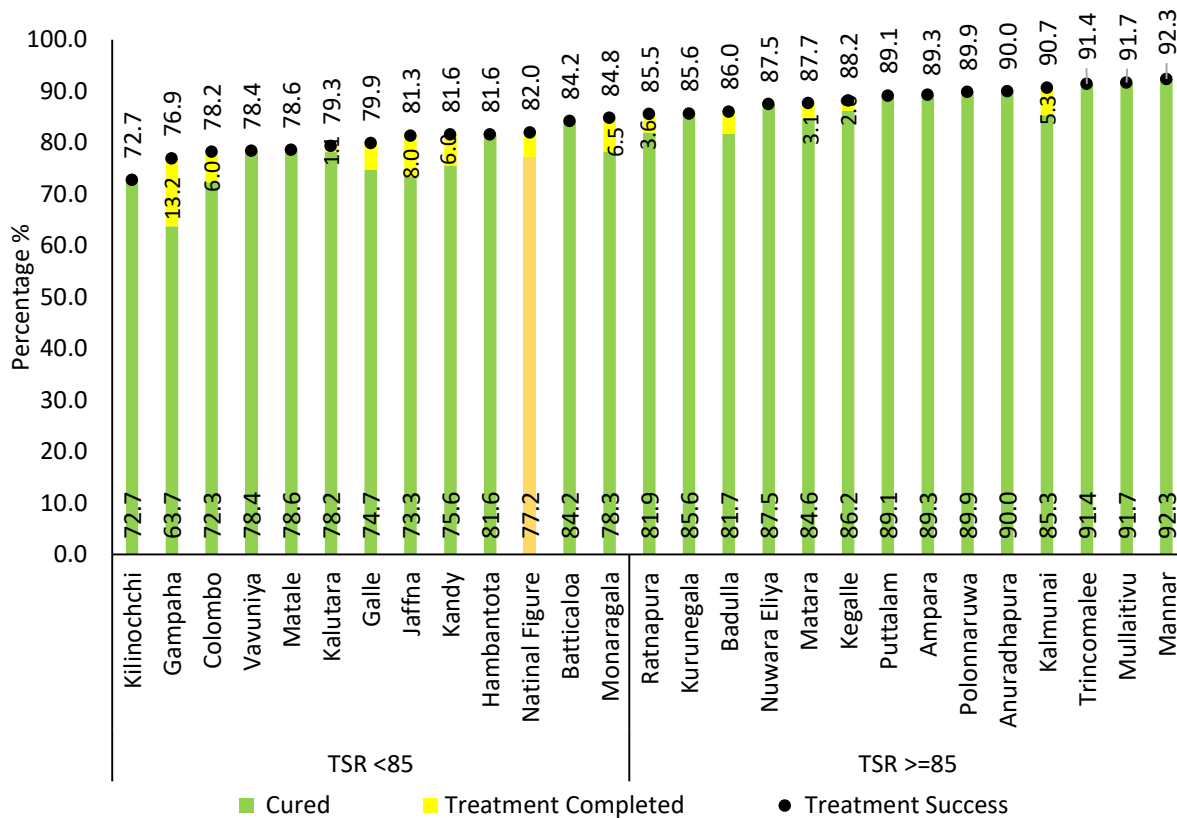


Figure 24: Treatment Success Rates of New Bacteriologically confirmed PTB Cases by Districts in 2021

Treatment failure was reported among 77 of these patients (2.2%), while Lost to Follow Up was seen among 141 (4.0%) patients. Another 132 patients fell into 'still on treatment/ changed diagnosis' category.

### Treatment Outcome of clinically diagnosed cases

Of the 871 cases, 644 completed treatment, giving a treatment completion rate of 73.9. District variations in the treatment completion rate is illustrated in the (Table 22). All together 114 deaths (13.1%) were reported among all registered TB patients of which 59 deaths were due to TB (6.8%). There were 33 patients for whom the outcome was given as lost to follow up while 77 (8.8%) was declared as not evaluated. Treatment Outcome of previously treated patients

In addition to the newly diagnosed TB patients, there were 508 patients who were diagnosed with a previous history of TB. This includes relapse, treatment failures, treatment after lost to follow up, etc. The highest number of 192 was reported from

Colombo district, followed by Gampaha (n=70) and Kalutara (n=35) districts.

Of these 508, 234 (46.1%) were declared as cured while 109 (21.5%) was declared as treatment completed and another 109 (21.5%) completed their treatment course, bringing the treatment success rate among the relapse category of patients to 67.5%. Altogether, 63 (12.4%) were reported as Lost to Follow Up, and another 52 (10.8%) fell into the 'outcome not evaluated' category.

### Treatment Outcome of Sputum Negative and Culture Positive Cases

In 2021, there were 101 new PTB cases whose sputum smear was negative, but culture was positive. The cure rate among these cases registered for treatment was 73 (72.3%) and a further 14 (13.9%) completed treatment within due period. Thus, the overall treatment success rate among sputum negative, culture positive category was 87% (table 30).

Figures 25-30 illustrates the treatment outcomes of different categories of TB patients in the year 2021.

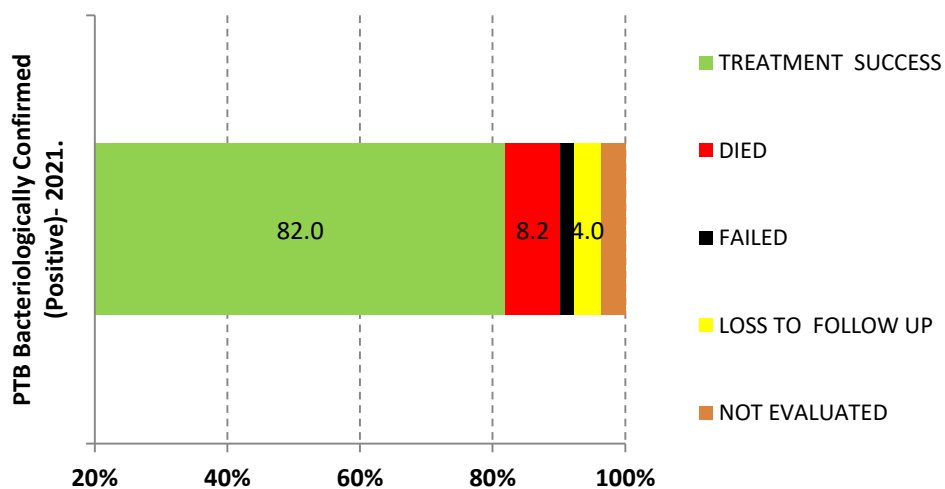


Figure 25: Treatment Outcome Summary of Bacteriologically Diagnosed TB Patients in 2021

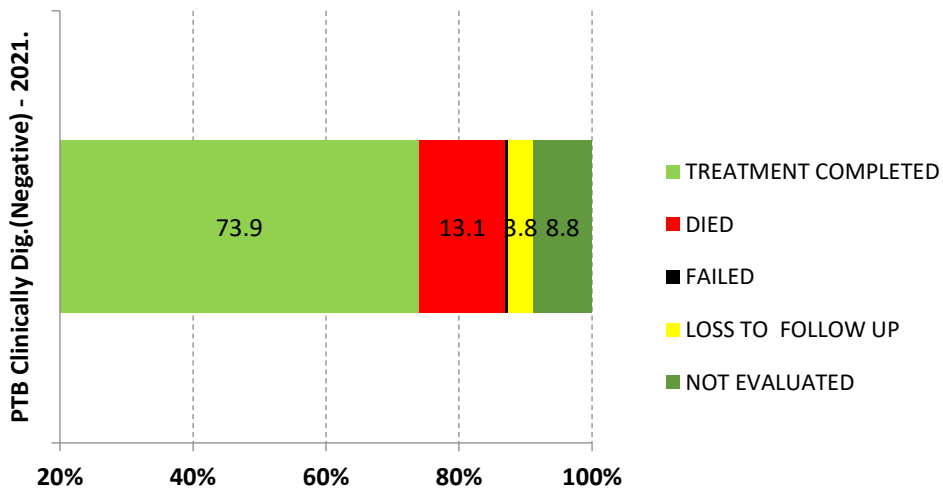


Figure 26: Treatment Outcome Summary of Clinically Diagnosed TB Patients in 2021

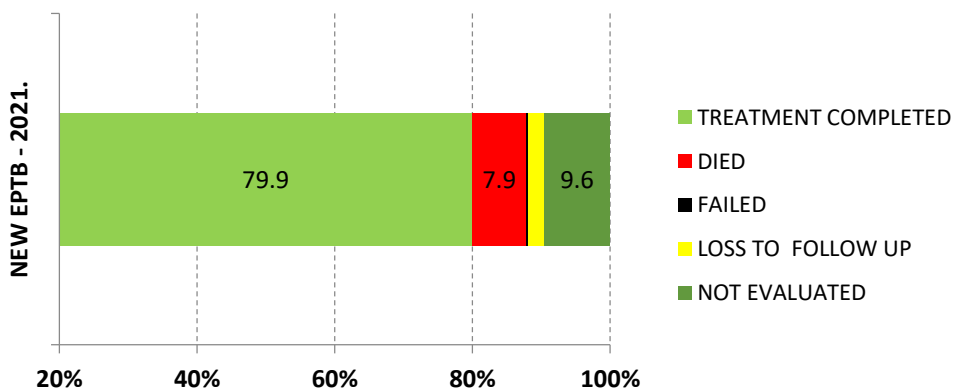


Figure 27: Treatment Outcome Summary of Extra Pulmonary TB Patients in 2021

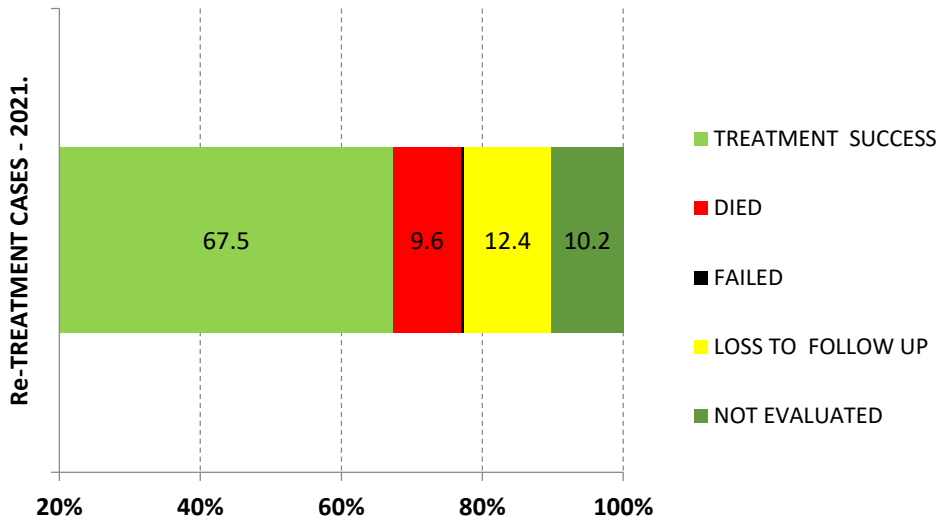


Figure 28: Treatment Outcome Summary of Re-Treatment TB Patients in 2021

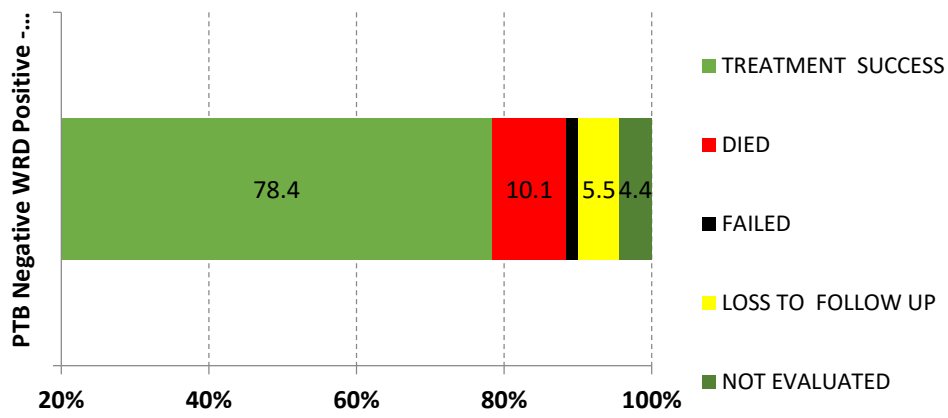


Figure 29: Treatment Outcome Summary of PTB Negative WRD Positive TB Patients in 2021



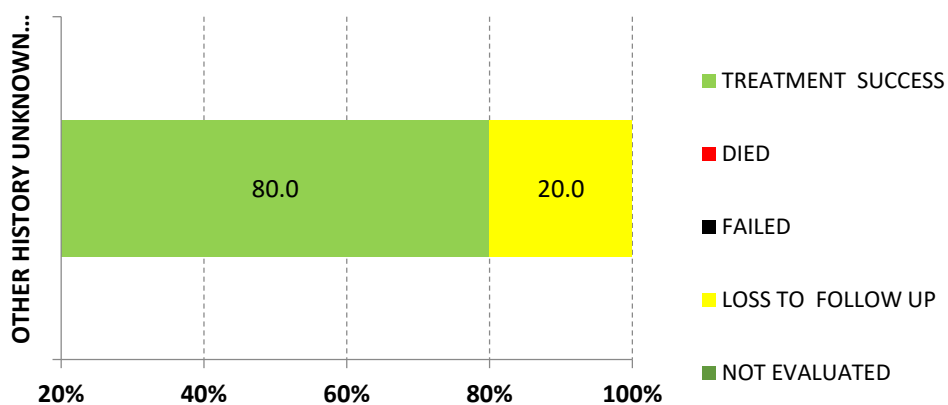


Figure 30: Treatment Outcome Summary of Treatment History Unknown TB Patients in 2021

### 3.5 DOTS coverage

Year	District Covered	Cumulative DOTS Population Coverage
1997	Galle	5.40%
1998	Kandy	12.90%
1999	Colombo	32.80%
	Matara	
	Anuradhapura	
2000	Kalutara	55.40%
	Ratnapura	
	Kurunegala	
	Puttalam	
2001	Gampaha	73.10%
	Hambantota	
	Kegalle	
	Polonnaruwa	
2002	–	73.10%

<b>2003</b>	–	74.20%
<b>2004</b>	Matale	87.30%
	Nuwara Eliya	
	Badulla	
	Monaragala	
	Vavuniya	
<b>2005</b>	Ampara	97.50%
	Kalmunai	
	Batticaloa	
	Trincomalee	
	Jaffna	
<b>2006</b>	–	97.60%
<b>2007</b>	–	
<b>2008</b>	–	
<b>2009</b>	–	
<b>2010</b>	Mannar	100.00%
	Mullaitivu	
	Kilinochchi	

*Table 6: Population coverage of DOTS in the country is 100% since 2010.*

**PART II**  
**ACTIVITY REPORT**

Due to the impact of the COVID-19 pandemic, many planned activities for the year 2022 could not be conducted as expected. However, despite these challenges, the NPTCCD successfully implemented several key activities in its commitment to achieving the End TB targets set by the WHO for 2035. As the national focal point, NPTCCD has initiated intensive integrated strategic actions to achieve these targets.

### **Primary Prevention and Improvement of Health Outcomes**

Strengthened active case finding (ACF) to increase TB case detection among high-risk groups, including screening of prisoners and hard-to-reach populations using the ACF algorithm at the district level.

Initiated collection of sputum samples from homebound elderly individuals for GeneXpert testing through locally active field health officers to improve TB screening in high-risk settings.

Conducted modular training programs for DTCOs, Medical Officers, nurses, and PHIs at the NPTCCD with physical participation to enhance the capacity of chest clinic staff.

Procured laboratory equipment, consumables, and Xpert MTB/RIF cartridges to ensure the smooth functioning of TB diagnostic services.

Continued procurement of quality-assured anti-TB drugs to maintain an undisrupted drug supply throughout 2022.

Established peer groups in estates to educate and motivate TB patients, which were successfully implemented.

### **Monitoring and Evaluation**

Conducted regular supervisory visits and review meetings to monitor TB care services at the regional level. Supervision was carried out in person at Colombo, Kalutara, and Gampaha chest clinics with participation from both central and district-level staff.

Organized virtual review meetings for DTCOs to assess TB care service performance at the district level.

Initiated district-level and central-level death reviews to analyze TB-related deaths and minimize preventable fatalities.

### **Health Education and Health Promotion**

Implemented an SMS alert system to improve awareness and treatment adherence among diagnosed TB patients.

Launched an SMS alert system for clinicians and General Practitioners (GPs) to enhance TB-related awareness among healthcare providers.

Provided IEC materials to private health institutions to strengthen community awareness.

Observed World TB Day on March 24th with special programs, including school art competitions, to increase public awareness.

Despite the challenges posed by the COVID-19 pandemic, NPTCCD remained committed to its mission of eliminating TB in Sri Lanka by implementing strategic interventions to enhance TB detection, treatment, monitoring, and education.

**PART III**  
**Administration Report**

## **Laboratory Services**

### ➤ **Sputum Smear Microscopy**

Sputum smear examinations are done for diagnosis of TB and for monitoring of treatment. The patients having symptoms suggestive of TB, attending to the healthcare facilities are screened for TB by sputum examinations. During the period of treatment all pulmonary TB patients are monitored with sputum examinations at regular and specified intervals.

### ➤ **Sputum Culture for AFB**

TB culture and DST facilities are available only at the National Reference Laboratory at Welisara. Regional Laboratory, Kandy and Ratnapura provide culture facilities only. Sputum cultures are being done for smear negative PTB cases, all previously treated cases before initiation of anti TB treatment and on presumptive MDR TB cases. Testing by WHO recommended Rapid Diagnostics (Gene X pert)

WHO recommended diagnostic facilities (Gene X pert) are available in Sri Lanka since 2014 in a limited scale and these facilities were expanded since year 2022.

### **External Quality Assurance of Sputum Microscopy**

Quality assurance of sputum smear microscopy is an important component of the National TB Programme. Slides are being sent from all laboratories of District Chest Clinics & NHRD Welisara to the NTRL for EQA. Sputum smears done in microscopy centers of general health institutions are being sent to laboratories at District Chest Clinics for EQA. In addition, samples from 4 private hospitals are received for EQA.

### **X-Ray Facilities**

X-ray facilities including digital X ray facilities are available in almost all chest clinics. The other clinics obtain this facility from the nearest hospital.

### **BCG Vaccination**

The BCG vaccination is an essential component of Expanded Programme of Immunization in Sri Lanka. Accordingly, all newborns are being vaccinated within 24 hours of delivery. BCG vaccination will protect the child from two deadly forms of Tuberculosis in children, i.e.; TB Meningitis and Millitary TB. (Disseminated TB), More than 98% of new born babies have been vaccinated with BCG.

Chest clinics provide services whenever revaccination is necessary, in situations such as absence of BCG scar in children below 5 years of age. There were 1425 revaccinations carried out in chest clinics during 2022.



## **Detailed Table**

**Table 7 : Age distribution of all forms of TB deaths**

<b>Year</b>	<b>Total</b>	<b>Male(%)</b>	<b>Female(%)</b>
2011	530	388	142
2012	511	375	136
2013	542	406	136
2014	657	495	162
2015	648	473	175
2016	620	464	156
2017	575	419	156
2018	567	423	144
2019	602	423	179
2020	554	404	150
2021	598	424	174
2022	747	509	238

Source: Health 814

Table 8: Distribution Rates of all TB cases by District of Residence in 2022

District	Estimated Mid-Year Population	No. of Cases Detected	No. of Cases Per 100,000 Population
Colombo	2,469,815	2190	88.7
Gampaha	2,433,786	1100	45.2
Kalutara	1,292,122	559	43.3
Kandy	1,498,137	559	37.3
Matale	529,621	139	26.2
Nuwara Eliya	783,426	231	29.5
Galle	1,145,492	448	39.1
Matara	873,493	143	16.4
Hambantota	680,669	129	19.0
Jaffna	628,887	221	35.1
Vavuniya	195,579	54	27.6
Batticaloa	587,058	144	24.5
Ampara	288,887	69	23.9
Kalmunai	464,373	166	35.7
Trincomalee	441,974	165	37.3
Kurunegala	1,739,914	427	24.5
Puttalam	847,635	148	17.5
Anuradhapura	954,554	<b>35</b> 262	27.4
Polonnaruwa	448,794	125	27.9
Badulla	898,134	220	24.5
Monaragala	509,475	109	21.4
Ratnapura	1,196,287	330	27.6
Kegalle	898,187	298	33.2
Mannar	114,762	33	28.8
Mullaitivu	99,141	28	28.2
Kilinochchi	134,204	45	33.5
<b>Total</b>	<b>22,154,406</b>	<b>8,342</b>	<b>37.7</b>

Table 9: All TB Case Detection by District of Registration in 2022

District	New Cases				Retreatment Cases																				Grand Total				
					Relapse				Treatment After Failure				Lost to Follow up				Other Previously Treated				Total Retreatment Cases					Treatment History unknown			
	PTB Bacteriologically Confirmed (Positive)	PTB Clinically Dig.(Negative)	EPTB	Total	PTB Bacteriologically Confirmed (Positive)	PTB Clinically Dig.(Negative)	EPTB	Total	PTB Bacteriologically Confirmed (Positive)	PTB Clinically Dig.(Negative)	EPTB	Total	PTB Bacteriologically Confirmed (Positive)	PTB Clinically Dig.(Negative)	EPTB	Total	PTB Bacteriologically Confirmed (Positive)	PTB Clinically Dig.(Negative)	EPTB	Total	PTB Bacteriologically Confirmed (Positive)	PTB Clinically Dig.(Negative)	EPTB	Total		PTB Bacteriologically Confirmed (Positive)	PTB Clinically Dig.(Negative)	EPTB	Total
Colombo	1180	361	446	1987	72	15	12	99	32	3	2	37	27	7	4	38	10	5	3	18	141	30	21	192	9	2	0	11	2190
Gampaha	506	270	221	997	34	19	11	64	10	0	1	11	17	4	3	24	0	1	2	3	61	24	17	102	1	0	0	1	1100
Kalutara	334	61	128	523	24	1	3	28	4	2	0	6	2	0	0	2	0	0	0	0	30	3	3	36	0	0	0	0	559
Kandy	229	153	155	537	9	2	4	15	5	0	0	5	1	0	1	2	0	0	0	0	15	2	5	22	0	0	0	0	559
Matale	60	22	50	132	3	0	2	5	1	0	0	1	1	0	0	1	0	0	0	0	5	0	2	7	0	0	0	0	139
Nuwara Eliya	89	47	82	218	2	1	1	4	2	0	2	4	4	0	1	5	0	0	0	0	8	1	4	13	0	0	0	0	231
Galle	186	86	146	418	12	4	1	17	2	0	3	5	2	1	0	3	0	2	3	5	16	7	7	30	0	0	0	0	448
Matara	86	20	33	139	2	0	0	2	1	1	0	2	0	0	0	0	0	0	0	0	3	1	0	4	0	0	0	0	143
Hambantota	45	42	34	121	2	2	1	5	1	0	0	1	2	0	0	2	0	0	0	0	5	2	1	8	0	0	0	0	129
Jaffna	93	40	71	204	9	5	1	15	1	0	0	1	0	0	0	0	1	0	0	1	11	5	1	17	0	0	0	0	221
Vavuniya	26	7	15	48	2	0	1	3	2	0	0	2	1	0	0	1	0	0	0	0	5	0	1	6	0	0	0	0	54
Batticaloa	75	41	23	139	1	1	1	3	1	0	0	1	1	0	0	1	0	0	0	0	3	1	1	5	0	0	0	0	144
Ampara	35	17	11	63	5	1	0	6	0	0	0	0	0	0	0	0	0	0	0	0	5	1	0	6	0	0	0	0	69
Kalmunai	104	32	21	157	2	1	0	3	3	0	0	3	2	1	0	3	0	0	0	0	7	2	0	9	0	0	0	0	166
Trincomalee	95	37	23	155	4	2	1	7	3	0	0	3	0	0	0	0	0	0	0	0	7	2	1	10	0	0	0	0	165
Kurunegala	202	76	123	401	12	5	2	19	4	1	1	6	1	0	0	1	0	0	0	0	17	6	3	26	0	0	0	0	427
Puttalam	82	29	27	138	6	2	0	8	1	0	0	1	0	0	0	0	0	1	0	1	7	3	0	10	0	0	0	0	148
Anuradhapura	143	44	59	246	8	0	5	13	2	0	0	2	1	0	0	1	0	0	0	0	11	0	5	16	0	0	0	0	262
Polonnaruwa	65	25	34	124	1	0	0	1	0	0	0	0	0	0	0	0	0	0	0	0	1	0	0	1	0	0	0	0	125
Badulla	105	48	59	212	2	2	2	6	2	0	0	2	0	0	0	0	0	0	0	0	4	2	2	8	0	0	0	0	220
Monaragala	61	14	27	102	3	0	0	3	4	0	0	4	0	0	0	0	0	0	0	0	7	0	0	7	0	0	0	0	109
Ratnapura	203	26	90	319	7	1	1	9	0	0	0	0	2	0	0	2	0	0	0	0	9	1	1	11	0	0	0	0	330
Kegalle	160	36	85	281	9	0	3	12	4	0	0	4	0	1	0	1	0	0	0	0	13	1	3	17	0	0	0	0	298
Mannar	13	8	11	32	0	0	0	0	1	0	0	1	0	0	0	0	0	0	0	0	1	0	0	1	0	0	0	0	33
Mullaitivu	8	8	12	28	0	0	0	0	0	0	0	0	0	0	0	0	0	0	0	0	0	0	0	0	0	0	0	0	28
Kilinochchi	26	6	9	41	0	0	0	0	2	0	1	3	1	0	0	1	0	0	0	0	3	0	1	4	0	0	0	0	45
<b>Total</b>	<b>4211</b>	<b>1556</b>	<b>1995</b>	<b>7762</b>	<b>231</b>	<b>64</b>	<b>52</b>	<b>347</b>	<b>88</b>	<b>7</b>	<b>10</b>	<b>105</b>	<b>65</b>	<b>14</b>	<b>9</b>	<b>88</b>	<b>11</b>	<b>9</b>	<b>8</b>	<b>28</b>	<b>395</b>	<b>94</b>	<b>79</b>	<b>568</b>	<b>10</b>	<b>2</b>	<b>0</b>	<b>12</b>	<b>8342</b>

\* Data from Quarterly Reports of Case Finding from districts.

**Table 10: Distribution of New Cases of TB by Province in 2022**

Province	Number of Patients													
	PTB Bacteriologically Confirmed	Rate	PTB Clinically Dig	Rate	EPTB	Rate	All New	Rate	Re-treatment	Rate	Previous Treatment History Unknown	Rate	All TB	Rate
Western	2020	32.6	692	11.2	795	12.8	3507	56.6	330	5.3	12	0.2	3849	62.1
Central	378	13.4	222	7.9	287	10.2	887	31.6	42	1.5	0	0.0	929	33.0
Southern	317	11.7	148	5.5	213	7.9	678	25.1	42	1.6	0	0.0	720	26.7
Northern	166	14.2	69	5.9	118	10.1	353	30.1	28	2.4	0	0.0	381	32.5
Eastern	309	17.3	127	7.1	78	4.4	514	28.8	30	1.7	0	0.0	544	30.5
North Western	284	11.0	105	4.1	150	5.8	539	20.8	36	1.4	0	0.0	575	22.2
North Central	208	14.8	69	4.9	93	6.6	370	26.4	17	1.2	0	0.0	387	27.6
Uva	166	11.8	62	4.4	86	6.1	314	22.3	15	1.1	0	0.0	329	23.4
Sabaragamuwa	363	17.3	62	3.0	175	8.4	600	28.6	28	1.3	0	0.0	628	30.0
<b>Total</b>	<b>4211</b>	<b>19.0</b>	<b>1556</b>	<b>7.0</b>	<b>1995</b>	<b>9.0</b>	<b>7762</b>	<b>35.0</b>	<b>568</b>	<b>2.6</b>	<b>12</b>	<b>0.1</b>	<b>8342</b>	<b>37.7</b>

\* Data from Quarterly Reports of Case Finding from districts.

**Table 11: Distribution of new cases of TB by Age and Type in 2022**

Age Group	Number of Patients							
	Smear Positive	Rate	Smear Negative	Rate	EPTB	Rate	All New	Rate
0 - 14	38	0.6	73	1.2	73	1.2	184	3.1
15 - 24	330	8.0	103	2.5	252	6.1	685	16.6
25 - 34	431	11.9	133	3.7	304	8.4	868	23.9
35 - 44	652	22.7	166	5.8	312	10.9	1130	39.4
45 - 54	922	52.3	249	14.1	359	20.4	1530	86.9
55 - 64	993	86.0	345	29.9	351	30.4	1689	146.3
65 +	845	30.7	487	17.7	344	12.5	1676	61.0
<b>Total</b>	<b>4211</b>	<b>19.0</b>	<b>1556</b>	<b>7.0</b>	<b>1995</b>	<b>9.0</b>	<b>7762</b>	<b>35.0</b>

**Table 12: Distribution of New Cases of TB by Age and Sex in 2022**

Age Group	Male			Female			All New Cases		
	Estimated Mid-Year Population	No	Rate	Estimated Mid-Year Population	No	Rate	Estimated Mid-Year Population	No	Rate
0 - 14	3,015,215	76	2.5	2,857,918	108	3.8	5,873,133	184	3.1
15 - 24	1,819,361	275	15.1	2,304,058	410	17.8	4,123,419	685	16.6
25 - 34	1,821,092	476	26.1	1,805,584	393	21.8	3,626,676	869	24.0
35 - 44	1,183,045	782	66.1	1,683,735	348	20.7	2,866,780	1130	39.4
45 - 54	897,253	1049	116.9	864,022	482	55.8	1,761,275	1531	86.9
55 - 64	613,677	1131	184.3	540,568	558	103.2	1,154,245	1689	146.3
65 +	1,400,158	1097	78.3	1,348,719	577	42.8	2,748,877	1674	60.9
<b>Total</b>	<b>10,749,802</b>	<b>4886</b>	<b>45.5</b>	<b>11,404,604</b>	<b>2876</b>	<b>25.2</b>	<b>22,154,406</b>	<b>7762</b>	<b>35.0</b>

\* Data from Quarterly Reports of Case Finding from districts.

**Table 13: Age and Sex Distribution of All New TB Cases by District in 2022**

District	Male										Female										Male	Female	Total
	0-4	5-14	15-24	25-34	35-44	45-54	55-64	65-74	75-Over	Total	0-4	5-14	15-24	25-34	35-44	45-54	55-64	65-74	75-Over	Total			
Colombo	7	15	70	121	198	250	262	166	61	1150	12	25	159	107	89	128	149	129	39	837	1150	837	1987
Gampaha	1	1	42	56	103	146	156	110	39	654	1	4	37	45	40	61	75	57	23	343	654	343	997
Kalutara	1	4	24	41	43	66	92	43	23	337	0	6	26	19	25	33	42	29	6	186	337	186	523
Kandy	4	6	23	23	50	69	56	65	18	314	5	10	36	36	27	34	28	29	18	223	314	223	537
Matale	2	1	4	11	17	17	22	10	4	88	0	1	4	4	4	10	8	9	4	44	88	44	132
Nuwara Eliya	2	2	14	19	24	22	27	14	8	132	1	5	19	16	11	13	15	3	3	86	132	86	218
Galle	1	11	18	16	37	53	55	43	13	247	3	11	17	24	16	40	32	19	9	171	247	171	418
Matara	0	0	4	13	18	23	16	15	12	101	0	0	5	5	7	7	8	5	1	38	101	38	139
Hambantota	0	0	3	5	8	21	21	17	6	81	1	0	4	4	5	3	10	12	1	40	81	40	121
Jaffna	0	2	5	13	16	24	28	20	21	129	0	1	10	14	5	9	14	15	7	75	129	75	204
Vavuniya	0	1	0	2	4	7	5	6	2	27	1	0	1	3	4	3	6	1	2	21	27	21	48
Batticaloa	0	1	2	7	17	19	20	16	2	84	0	0	5	9	4	13	14	7	3	55	84	55	139
Ampara	0	0	1	5	10	8	10	5	4	43	0	0	2	0	2	3	3	6	4	20	43	20	63
Kalmunai	0	0	4	4	9	26	44	18	5	110	0	1	5	6	8	11	7	8	1	47	110	47	157
Trincomalee	1	1	2	4	16	20	25	21	9	99	1	1	3	6	8	13	13	7	4	56	99	56	155
Kurunegala	0	2	11	25	48	64	74	49	11	284	2	1	10	14	15	14	32	26	4	118	284	118	402
Puttalam	0	0	5	6	20	24	20	18	3	96	0	1	2	6	8	8	7	5	5	42	96	42	138
Anuradhapura	0	0	8	16	27	43	41	26	8	169	2	0	5	10	17	15	18	8	2	77	169	77	246
Polonnaruwa	0	1	3	9	12	19	21	13	6	84	1	0	0	3	9	7	8	10	2	40	84	40	124
Badulla	1	0	4	20	25	31	33	23	5	142	0	2	13	18	8	9	11	7	2	70	142	70	212
Monaragala	0	1	5	13	11	12	17	12	6	77	0	2	4	2	5	5	3	3	1	25	77	25	102
Ratnapura	0	3	14	20	28	31	37	40	20	193	4	1	21	22	15	21	24	13	4	125	193	125	318
Kegalle	0	2	9	22	27	34	33	39	8	174	0	2	19	15	12	13	25	15	6	107	174	107	281
Mannar	0	1	0	1	6	7	5	5	0	25	0	0	3	0	1	1	2	0	0	7	25	7	32
Mullaitivu	0	1	0	1	2	6	2	4	1	17	0	0	0	1	2	2	3	3	0	11	17	11	28
Kilinochchi	0	0	0	3	6	7	9	3	2	30	0	0	0	3	1	5	1	1	0	11	30	11	41
<b>Total</b>	<b>20</b>	<b>56</b>	<b>275</b>	<b>476</b>	<b>782</b>	<b>1049</b>	<b>1131</b>	<b>801</b>	<b>297</b>	<b>4887</b>	<b>34</b>	<b>74</b>	<b>410</b>	<b>392</b>	<b>348</b>	<b>481</b>	<b>558</b>	<b>427</b>	<b>151</b>	<b>2875</b>	<b>4887</b>	<b>2875</b>	<b>7762</b>

\* Data from Quarterly Reports of Case Finding from districts.

**Table 14: Age and Sex Distribution of Bacteriology Confirmed New TB Cases by District in 2022**

District	Male										Female										Male	Female	Total
	0-4	5-14	15-24	25-34	35-44	45-54	55-64	65-74	75-Over	Total	0-4	5-14	15-24	25-34	35-44	45-54	55-64	65-74	75-Over	Total			
Colombo	1	1	34	79	133	189	174	102	29	742	1	11	73	46	49	74	96	71	18	439	742	439	1181
Gampaha	0	0	18	28	59	94	98	47	14	358	0	0	16	17	16	29	34	28	8	148	358	148	506
Kalutara	0	2	16	24	33	55	62	27	17	236	0	1	15	7	13	11	29	19	3	98	236	98	334
Kandy	1	0	8	12	23	46	33	27	5	155	0	5	16	11	6	12	10	8	6	74	155	74	229
Matale	0	0	3	9	10	10	11	3	0	46	0	1	2	1	2	3	2	2	1	14	46	14	60
Nuwara Eliya	0	0	5	12	13	10	12	5	1	58	0	3	5	5	5	5	6	2	0	31	58	31	89
Galle	0	0	10	5	23	32	19	24	7	120	0	0	10	9	5	16	15	8	3	66	120	66	186
Matara	0	0	1	9	11	14	14	11	9	69	0	0	2	1	4	4	4	1	1	17	69	17	86
Hambantota	0	0	1	2	4	11	10	3	3	34	0	0	2	4	1	1	2	1	0	11	34	11	45
Jaffna	0	0	3	5	8	17	15	7	9	64	0	1	5	6	1	2	6	6	2	29	64	29	93
Vavuniya	0	1	0	1	1	4	5	3	1	16	0	0	0	1	2	1	4	0	2	10	16	10	26
Batticaloa	0	0	2	5	7	13	13	11	1	52	0	0	2	4	2	6	5	3	1	23	52	23	75
Ampara	0	0	1	4	5	5	2	5	4	26	0	0	1	0	2	0	2	2	2	9	26	9	35
Kalmunai	0	0	1	2	3	16	35	12	2	71	0	1	4	2	7	8	5	5	1	33	71	33	104
Trincomalee	0	0	0	3	14	16	16	11	5	65	0	0	1	4	5	6	7	4	3	30	65	30	95
Kurunegala	0	0	5	10	29	38	47	21	5	155	0	0	4	10	2	6	13	12	0	47	155	47	202
Puttalam	0	0	3	3	13	13	15	10	2	59	0	1	2	0	5	5	4	4	2	23	59	23	82
Anuradhapura	0	0	6	7	18	24	27	13	5	100	0	0	5	7	12	7	8	3	1	43	100	43	143
Polonnaruwa	0	0	3	4	10	12	12	6	5	52	0	0	0	1	2	2	2	5	1	13	52	13	65
Badulla	0	0	0	11	17	16	15	10	3	72	0	2	9	7	4	5	2	3	1	33	72	33	105
Monaragala	0	0	2	7	6	8	10	8	5	46	0	1	1	1	2	4	2	3	1	15	46	15	61
Ratnapura	0	0	6	10	19	23	28	28	9	123	1	1	13	13	11	12	17	11	0	79	123	79	202
Kegalle	0	0	4	9	18	23	20	28	4	106	0	1	9	7	7	6	14	9	1	54	106	54	160
Mannar	0	0	0	1	5	1	2	2	0	11	0	0	1	0	0	1	0	0	0	2	11	2	13
Mullaitivu	0	1	0	1	0	0	1	3	0	6	0	0	0	0	0	0	0	2	0	2	6	2	8
Kilinochchi	0	0	0	3	4	5	7	1	1	21	0	0	0	1	1	1	1	1	0	5	21	5	26
<b>Total</b>	<b>2</b>	<b>5</b>	<b>132</b>	<b>266</b>	<b>486</b>	<b>695</b>	<b>703</b>	<b>428</b>	<b>146</b>	<b>2863</b>	<b>2</b>	<b>29</b>	<b>198</b>	<b>165</b>	<b>166</b>	<b>227</b>	<b>290</b>	<b>213</b>	<b>58</b>	<b>1348</b>	<b>2863</b>	<b>1348</b>	<b>4211</b>

\* Data from Quarterly Reports of Case Finding from districts.



**Table 15: Age and Sex Distribution of Smear Negative New TB Cases by District in 2022**

District	Male										Female										Male	Female	Total
	0-4	5-14	15-24	25-34	35-44	45-54	55-64	65-74	75-Over	Total	0-4	5-14	15-24	25-34	35-44	45-54	55-64	65-74	75-Over	Total			
Colombo	5	7	17	12	26	32	51	38	23	211	6	6	28	19	9	20	20	29	12	149	211	149	360
Gampaha	1	1	8	11	20	29	44	46	22	182	1	2	4	11	5	10	25	16	14	88	182	88	270
Kalutara	0	1	1	3	3	1	16	4	1	30	0	2	2	7	4	8	5	3	0	31	30	31	61
Kandy	3	6	7	1	9	10	16	23	8	83	3	2	4	12	11	12	8	9	9	70	83	70	153
Matale	0	0	0	1	0	4	6	2	1	14	0	0	0	1	2	1	0	4	0	8	14	8	22
Nuwara Eliya	0	1	4	2	2	9	8	4	3	33	0	0	2	2	1	3	4	1	1	14	33	14	47
Galle	0	8	2	3	6	8	13	8	2	50	2	6	0	5	3	6	6	3	5	36	50	36	86
Matara	0	0	1	1	4	3	0	3	1	13	0	0	0	0	0	2	2	3	0	7	13	7	20
Hambantota	0	0	1	1	0	4	6	11	3	26	0	0	0	0	1	0	5	9	1	16	26	16	42
Jaffna	0	0	0	3	3	3	2	4	8	23	0	0	0	3	2	1	3	5	3	17	23	17	40
Vavuniya	0	0	0	0	1	0	0	1	1	3	0	0	0	0	0	1	2	1	0	4	3	4	7
Batticaloa	0	0	0	0	5	4	7	4	1	21	0	0	1	0	2	4	8	3	2	20	21	20	41
Ampara	0	0	0	1	3	2	7	0	0	13	0	0	0	0	0	1	0	3	0	4	13	4	17
Kalmunai	0	0	1	1	4	5	8	3	2	24	0	0	0	3	1	2	0	2	0	8	24	8	32
Trincomalee	1	1	1	0	1	0	4	9	2	19	1	0	1	2	1	6	3	3	1	18	19	18	37
Kurunegala	0	0	2	4	5	8	10	15	4	48	0	0	4	3	5	4	4	8	1	29	48	29	77
Puttalam	0	0	1	1	3	5	4	6	1	21	0	0	0	1	2	1	2	1	1	8	21	8	29
Anuradhapura	0	0	1	1	3	9	7	9	3	33	0	0	0	0	1	3	5	2	0	11	33	11	44
Polonnaruwa	0	0	0	2	0	3	4	4	1	14	0	0	0	1	2	1	1	5	1	11	14	11	25
Badulla	0	0	0	2	5	4	8	11	1	31	0	0	1	3	1	3	6	2	1	17	31	17	48
Monaragala	0	1	0	3	1	1	2	3	1	12	0	0	0	0	1	1	0	0	0	2	12	2	14
Ratnapura	0	2	1	1	1	2	2	1	6	16	3	0	2	0	0	1	1	2	1	10	16	10	26
Kegalle	0	0	0	4	2	2	4	6	1	19	0	1	5	1	2	2	3	2	1	17	19	17	36
Mannar	0	0	0	0	1	3	0	2	0	6	0	0	1	0	0	0	1	0	0	2	6	2	8
Mullaitivu	0	0	0	0	0	4	0	1	0	5	0	0	0	1	0	0	1	1	0	3	5	3	8
Kilinochchi	0	0	0	0	2	0	1	2	0	5	0	0	0	0	0	1	0	0	0	1	5	1	6
<b>Total</b>	<b>10</b>	<b>28</b>	<b>48</b>	<b>58</b>	<b>110</b>	<b>155</b>	<b>230</b>	<b>220</b>	<b>96</b>	<b>955</b>	<b>16</b>	<b>19</b>	<b>55</b>	<b>75</b>	<b>56</b>	<b>94</b>	<b>115</b>	<b>117</b>	<b>54</b>	<b>601</b>	<b>955</b>	<b>601</b>	<b>1556</b>

\* Data from Quarterly Reports of Case Finding from districts.

**Table 16: Age and Sex Distribution of All New PTB Cases by District in 2022**

District	Male										Female										Male	Female	Total
	0-4	5-14	15-24	25-34	35-44	45-54	55-64	65-74	75-Over	Total	0-4	5-14	15-24	25-34	35-44	45-54	55-64	65-74	75-Over	Total			
Colombo	6	8	51	91	159	221	225	140	52	953	7	17	101	65	58	94	116	100	30	588	953	588	1541
Gampaha	1	1	26	39	79	123	142	93	36	540	1	2	20	28	21	39	59	44	22	236	540	236	776
Kalutara	0	3	17	27	36	56	78	31	18	266	0	3	17	14	17	19	34	22	3	129	266	129	395
Kandy	4	6	15	13	32	56	49	50	13	238	3	7	20	23	17	24	18	17	15	144	238	144	382
Matale	0	0	3	10	10	14	17	5	1	60	0	1	2	2	4	4	2	6	1	22	60	22	82
Nuwara Eliya	0	1	9	14	15	19	20	9	4	91	0	3	7	7	6	8	10	3	1	45	91	45	136
Galle	0	8	12	8	29	40	32	32	9	170	2	6	10	14	8	22	21	11	8	102	170	102	272
Matara	0	0	2	10	15	17	14	14	10	82	0	0	2	1	4	6	6	4	1	24	82	24	106
Hambantota	0	0	2	3	4	15	16	14	6	60	0	0	2	4	2	1	7	10	1	27	60	27	87
Jaffna	0	0	3	8	11	20	17	11	17	87	0	1	5	9	3	3	9	11	5	46	87	46	133
Vavuniya	0	1	0	1	2	4	5	4	2	19	0	0	0	1	2	2	6	1	2	14	19	14	33
Batticaloa	0	0	2	5	12	17	20	15	2	73	0	0	3	4	4	10	13	6	3	43	73	43	116
Ampara	0	0	1	5	8	7	9	5	4	39	0	0	1	0	2	1	2	5	2	13	39	13	52
Kalmunai	0	0	2	3	7	21	43	15	4	95	0	1	4	5	8	10	5	7	1	41	95	41	136
Trincomalee	1	1	1	3	15	16	20	20	7	84	1	0	2	6	6	12	10	7	4	48	84	48	132
Kurunegala	0	0	7	14	34	46	57	36	9	203	0	0	8	13	7	10	17	20	1	76	203	76	279
Puttalam	0	0	4	4	16	18	19	16	3	80	0	1	2	1	7	6	6	5	3	31	80	31	111
Anuradhapura	0	0	7	8	21	33	34	22	8	133	0	0	5	7	13	10	13	5	1	54	133	54	187
Polonnaruwa	0	0	3	6	10	15	16	10	6	66	0	0	0	2	4	3	3	10	2	24	66	24	90
Badulla	0	0	0	13	22	20	23	21	4	103	0	2	10	10	5	8	8	5	2	50	103	50	153
Monaragala	0	1	2	10	7	9	12	11	6	58	0	1	1	1	3	5	2	3	1	17	58	17	75
Ratnapura	0	2	7	11	20	25	30	29	15	139	4	1	15	13	11	13	18	13	1	89	139	89	228
Kegalle	0	0	4	13	20	25	24	34	5	125	0	2	14	8	9	8	17	11	2	71	125	71	196
Mannar	0	0	0	1	6	4	2	4	0	17	0	0	2	0	0	1	1	0	0	4	17	4	21
Mullaitivu	0	1	0	1	0	4	1	4	0	11	0	0	0	1	0	0	1	3	0	5	11	5	16
Kilinochchi	0	0	0	3	6	5	8	3	1	26	0	0	0	1	1	2	1	1	0	6	26	6	32
<b>Total</b>	<b>12</b>	<b>33</b>	<b>180</b>	<b>324</b>	<b>596</b>	<b>850</b>	<b>933</b>	<b>648</b>	<b>242</b>	<b>3818</b>	<b>18</b>	<b>48</b>	<b>253</b>	<b>240</b>	<b>222</b>	<b>321</b>	<b>405</b>	<b>330</b>	<b>112</b>	<b>1949</b>	<b>3818</b>	<b>1949</b>	<b>5767</b>

\* Data from Quarterly Reports of Case Finding from districts.

**Table 17: Age and Sex Distribution of New EPTB Cases by District in 2022**

District	Male										Female										Male	Female	Total
	0-4	5-14	15-24	25-34	35-44	45-54	55-64	65-74	75-Over	Total	0-4	5-14	15-24	25-34	35-44	45-54	55-64	65-74	75-Over	Total			
Colombo	1	7	19	30	39	29	37	26	9	197	5	8	58	42	31	34	33	29	9	249	197	249	446
Gampaha	0	0	16	17	24	23	14	17	3	114	0	2	17	17	19	22	16	13	1	107	114	107	221
Kalutara	1	1	7	14	7	10	14	12	5	71	0	3	9	5	8	14	8	7	3	57	71	57	128
Kandy	0	0	8	10	18	13	7	15	5	76	2	3	16	13	10	10	10	12	3	79	76	79	155
Matale	2	1	1	1	7	3	5	5	3	28	0	0	2	2	0	6	6	3	3	22	28	22	50
Nuwara Eliya	2	1	5	5	9	3	7	5	4	41	1	2	12	9	5	5	5	0	2	41	41	41	82
Galle	1	3	6	8	8	13	23	11	4	77	1	5	7	10	8	18	11	8	1	69	77	69	146
Matara	0	0	2	3	3	6	2	1	2	19	0	0	3	4	3	1	2	1	0	14	19	14	33
Hambantota	0	0	1	2	4	6	5	3	0	21	1	0	2	0	3	2	3	2	0	13	21	13	34
Jaffna	0	2	2	5	5	4	11	9	4	42	0	0	5	5	2	6	5	4	2	29	42	29	71
Vavuniya	0	0	0	1	2	3	0	2	0	8	1	0	1	2	2	1	0	0	0	7	8	7	15
Batticaloa	0	1	0	2	5	2	0	1	0	11	0	0	2	5	0	3	1	1	0	12	11	12	23
Ampara	0	0	0	0	2	1	1	0	0	4	0	0	1	0	0	2	1	1	2	7	4	7	11
Kalmunai	0	0	2	1	2	5	1	3	1	15	0	0	1	1	0	1	2	1	0	6	15	6	21
Trincomalee	0	0	1	1	1	4	5	1	2	15	0	1	1	0	2	1	3	0	0	8	15	8	23
Kurunegala	0	2	4	11	14	18	17	13	2	81	2	1	2	1	8	4	15	6	3	42	81	42	123
Puttalam	0	0	1	2	4	6	1	2	0	16	0	0	0	5	1	2	1	0	2	11	16	11	27
Anuradhapura	0	0	1	8	6	10	7	4	0	36	2	0	0	3	4	5	5	3	1	23	36	23	59
Polonnaruwa	0	1	0	3	2	4	5	3	0	18	1	0	0	1	5	4	5	0	0	16	18	16	34
Badulla	1	0	4	7	3	11	10	2	1	39	0	0	3	8	3	1	3	2	0	20	39	20	59
Monaragala	0	0	3	3	4	3	5	1	0	19	0	1	3	1	2	0	1	0	0	8	19	8	27
Ratnapura	0	1	7	9	8	6	7	11	5	54	0	0	6	9	4	8	6	0	3	36	54	36	90
Kegalle	0	2	5	9	7	9	9	5	3	49	0	0	5	7	3	5	8	4	4	36	49	36	85
Mannar	0	1	0	0	0	3	3	1	0	8	0	0	1	0	1	0	1	0	0	3	8	3	11
Mullaitivu	0	0	0	0	2	2	1	0	1	6	0	0	0	0	2	2	2	0	0	6	6	6	12
Kilinochchi	0	0	0	0	0	2	1	0	1	4	0	0	0	2	0	3	0	0	0	5	4	5	9
<b>Total</b>	<b>8</b>	<b>23</b>	<b>95</b>	<b>152</b>	<b>186</b>	<b>199</b>	<b>198</b>	<b>153</b>	<b>55</b>	<b>1069</b>	<b>16</b>	<b>26</b>	<b>157</b>	<b>152</b>	<b>126</b>	<b>160</b>	<b>153</b>	<b>97</b>	<b>39</b>	<b>926</b>	<b>1069</b>	<b>926</b>	<b>1995</b>

\* Data from Quarterly Reports of Case Finding from districts.

**Table 18: Distribution of Treatment Outcome of All forms of TB by Districts in 2021**

District	Total Number Registered	Cured		Treatment Completed		Treatment Success		Died						Failure		Lost to Follow up		Not Evaluated		Total
		No	Rate	No	Rate	No	Rate	Confirmed as not due to TB		All Other Deaths		All TB Deaths		No	Rate	No	Rate	No	Rate	
								No	Rate	No	Rate	No	Rate							
Colombo	1690	737	43.6	538	31.8	1275	75.4	51	3.0	93	5.5	144	8.5	32	1.9	153	9.1	86	5.1	1690
Gampaha	895	317	35.4	333	37.2	650	72.6	70	7.8	25	2.8	95	10.6	15	1.7	68	7.6	67	7.5	895
Kalutara	436	224	51.4	107	24.5	331	75.9	3	0.7	19	4.4	22	5.0	1	0.2	3	0.7	79	18.1	436
Kandy	462	178	38.5	189	40.9	367	79.4	10	2.2	37	8.0	47	10.2	5	1.1	8	1.7	35	7.6	462
Matale	117	46	39.3	48	41.0	94	80.3	8	6.8	7	6.0	15	12.8	1	0.9	2	1.7	5	4.3	117
Nuwara Eliya	177	71	40.1	72	40.7	143	80.8	9	5.1	11	6.2	20	11.3	0	0.0	2	1.1	12	6.8	177
Galle	380	128	33.7	172	45.3	300	78.9	16	4.2	17	4.5	33	8.7	7	1.8	8	2.1	32	8.4	380
Matara	108	59	54.6	35	32.4	94	87.0	5	4.6	4	3.7	9	8.3	1	0.9	0	0.0	4	3.7	108
Hambantota	111	34	30.6	55	49.5	89	80.2	11	9.9	1	0.9	12	10.8	1	0.9	4	3.6	5	4.5	111
Jaffna	199	58	29.1	93	46.7	151	75.9	11	5.5	10	5.0	21	10.6	1	0.5	3	1.5	23	11.6	199
Vavuniya	53	35	66.0	8	15.1	43	81.1	5	9.4	2	3.8	7	13.2	3	5.7	0	0.0	0	0.0	53
Batticaloa	124	69	55.6	37	29.8	106	85.5	2	1.6	9	7.3	11	8.9	0	0.0	0	0.0	7	5.6	124
Ampara	47	26	55.3	15	31.9	41	87.2	3	6.4	0	0.0	3	6.4	0	0.0	1	2.1	2	4.3	47
Kalmunai	141	75	53.2	48	34.0	123	87.2	4	2.8	7	5.0	11	7.8	2	1.4	2	1.4	3	2.1	141
Trincomalee	101	72	71.3	16	15.8	88	87.1	5	5.0	0	0.0	5	5.0	1	1.0	0	0.0	7	6.9	101
Kurunegala	342	170	49.7	118	34.5	288	84.2	17	5.0	12	3.5	29	8.5	2	0.6	11	3.2	12	3.5	342
Puttalam	157	84	53.5	55	35.0	139	88.5	6	3.8	4	2.5	10	6.4	0	0.0	2	1.3	6	3.8	157
Anuradhapura	173	101	58.4	60	34.7	161	93.1	3	1.7	1	0.6	4	2.3	6	3.5	0	0.0	2	1.2	173
Polonnaruwa	129	68	52.7	49	38.0	117	90.7	4	3.1	5	3.9	9	7.0	2	1.6	0	0.0	1	0.8	129
Badulla	192	82	42.7	75	39.1	157	81.8	10	5.2	11	5.7	21	10.9	1	0.5	6	3.1	7	3.6	192
Monaragala	104	38	36.5	44	42.3	82	78.8	9	8.7	3	2.9	12	11.5	2	1.9	1	1.0	7	6.7	104
Ratnapura	307	145	47.2	104	33.9	249	81.1	16	5.2	13	4.2	29	9.4	1	0.3	4	1.3	24	7.8	307
Kegalle	236	136	57.6	74	31.4	210	89.0	8	3.4	11	4.7	19	8.1	2	0.8	1	0.4	4	1.7	236
Mannar	29	12	41.4	12	41.4	24	82.8	0	0.0	4	13.8	4	13.8	0	0.0	0	0.0	1	3.4	29
Mullaitivu	25	11	44.0	12	48.0	23	92.0	1	4.0	0	0.0	1	4.0	0	0.0	0	0.0	1	4.0	25
Kilinochchi	36	8	22.2	20	55.6	28	77.8	0	0.0	5	13.9	5	13.9	1	2.8	1	2.8	1	2.8	36
<b>Total</b>	<b>6771</b>	<b>2984</b>	<b>44.1</b>	<b>2389</b>	<b>35.3</b>	<b>5373</b>	<b>79.4</b>	<b>287</b>	<b>4.2</b>	<b>311</b>	<b>4.6</b>	<b>598</b>	<b>8.8</b>	<b>87</b>	<b>1.3</b>	<b>280</b>	<b>4.1</b>	<b>433</b>	<b>6.4</b>	<b>6771</b>

Source: Quarterly reports of District Chest Clinics

**Table 19: Distribution of Treatment Outcome of All Forms of New (PTB and EPTB) Cases by District in 2021**

District	Total Number Registered	Cured		Treatment Completed		Treatment Success		Died						Failure		Lost to Follow up		Not Evaluated		Total
		No	Rate	No	Rate	No	Rate	Confirmed as not due to TB		All Other Deaths		All TB Deaths		No	Rate	No	Rate	No	Rate	
								No	Rate	No	Rate	No	Rate							
Colombo	1487	680	45.7	483	32.5	1163	78.2	44	3.0	71	4.8	115	7.7	32	2.2	109	7.3	68	4.6	1487
Gampaha	823	290	35.2	312	37.9	602	73.1	64	7.8	25	3.0	89	10.8	14	1.7	58	7.0	60	7.3	823
Kalutara	401	204	50.9	104	25.9	308	76.8	3	0.7	19	4.7	22	5.5	1	0.2	2	0.5	68	17.0	401
Kandy	435	164	37.7	180	41.4	344	79.1	10	2.3	36	8.3	46	10.6	5	1.1	7	1.6	33	7.6	435
Matale	113	44	38.9	47	41.6	91	80.5	8	7.1	7	6.2	15	13.3	1	0.9	2	1.8	4	3.5	113
Nuwara Eliya	167	63	37.7	70	41.9	133	79.6	9	5.4	11	6.6	20	12.0	0	0.0	2	1.2	12	7.2	167
Galle	355	115	32.4	167	47.0	282	79.4	13	3.7	16	4.5	29	8.2	7	2.0	8	2.3	29	8.2	355
Matara	104	55	52.9	35	33.7	90	86.5	5	4.8	4	3.8	9	8.7	1	1.0	0	0.0	4	3.8	104
Hambantota	104	31	29.8	54	51.9	85	81.7	11	10.6	0	0.0	11	10.6	1	1.0	2	1.9	5	4.8	104
Jaffna	188	55	29.3	89	47.3	144	76.6	10	5.3	8	4.3	18	9.6	1	0.5	2	1.1	23	12.2	188
Vavuniya	46	29	63.0	7	15.2	36	78.3	5	10.9	2	4.3	7	15.2	3	6.5	0	0.0	0	0.0	46
Batticaloa	118	64	54.2	37	31.4	101	85.6	2	1.7	8	6.8	10	8.5	0	0.0	0	0.0	7	5.9	118
Ampara	44	25	56.8	15	34.1	40	90.9	3	6.8	0	0.0	3	6.8	0	0.0	1	2.3	0	0.0	44
Kalmunai	128	64	50.0	48	37.5	112	87.5	4	3.1	7	5.5	11	8.6	2	1.6	1	0.8	2	1.6	128
Trincomalee	88	64	72.7	15	17.0	79	89.8	3	3.4	0	0.0	3	3.4	1	1.1	0	0.0	5	5.7	88
Kurunegala	322	155	48.1	117	36.3	272	84.5	17	5.3	12	3.7	29	9.0	2	0.6	9	2.8	10	3.1	322
Puttalam	151	82	54.3	55	36.4	137	90.7	5	3.3	4	2.6	9	6.0	0	0.0	0	0.0	5	3.3	151
Anuradhapura	161	90	55.9	59	36.6	149	92.5	3	1.9	1	0.6	4	2.5	6	3.7	0	0.0	2	1.2	161
Polonnaruwa	123	62	50.4	49	39.8	111	90.2	4	3.3	5	4.1	9	7.3	2	1.6	0	0.0	1	0.8	123
Badulla	184	76	41.3	74	40.2	150	81.5	10	5.4	11	6.0	21	11.4	1	0.5	5	2.7	7	3.8	184
Monaragala	99	36	36.4	43	43.4	79	79.8	8	8.1	3	3.0	11	11.1	2	2.0	1	1.0	6	6.1	99
Ratnapura	293	136	46.4	101	34.5	237	80.9	15	5.1	12	4.1	27	9.2	1	0.3	4	1.4	24	8.2	293
Kegalle	229	131	57.2	72	31.4	203	88.6	8	3.5	11	4.8	19	8.3	2	0.9	1	0.4	4	1.7	229
Mannar	29	12	41.4	12	41.4	24	82.8	0	0.0	4	13.8	4	13.8	0	0.0	0	0.0	1	3.4	29
Mullaitivu	25	11	44.0	12	48.0	23	92.0	1	4.0	0	0.0	1	4.0	0	0.0	0	0.0	1	4.0	25
Kilinochchi	32	8	25.0	19	59.4	27	84.4	0	0.0	3	9.4	3	9.4	1	3.1	1	3.1	0	0.0	32
<b>Total</b>	<b>6249</b>	<b>2746</b>	<b>43.9</b>	<b>2276</b>	<b>36.4</b>	<b>5022</b>	<b>80.4</b>	<b>265</b>	<b>4.2</b>	<b>280</b>	<b>4.5</b>	<b>545</b>	<b>8.7</b>	<b>86</b>	<b>1.4</b>	<b>215</b>	<b>3.4</b>	<b>381</b>	<b>6.1</b>	<b>6249</b>

Source: Quarterly reports of District Chest Clinics

**Table 20: Distribution of Treatment Outcome of All New PTB Cases by District in 2021**

District	Total Number Registered	Cured		Treatment Completed		Treatment Success		Died						Failure		Lost to Follow up		Not Evaluated		Total
		No	Rate	No	Rate	No	Rate	Confirmed as not due to TB		All Other Deaths		All TB Deaths		No	Rate	No	Rate	No	Rate	
								No	Rate	No	Rate	No	Rate							
Colombo	1142	680	59.5	201	17.6	881	77.1	31	2.7	61	5.3	92	8.1	30	2.6	96	8.4	43	3.8	1142
Gampaha	591	290	49.1	152	25.7	442	74.8	43	7.3	20	3.4	63	10.7	14	2.4	43	7.3	29	4.9	591
Kalutara	286	204	71.3	20	7.0	224	78.3	3	1.0	14	4.9	17	5.9	1	0.3	1	0.3	43	15.0	286
Kandy	308	164	53.2	78	25.3	242	78.6	7	2.3	28	9.1	35	11.4	5	1.6	4	1.3	22	7.1	308
Matale	66	44	66.7	8	12.1	52	78.8	5	7.6	5	7.6	10	15.2	1	1.5	2	3.0	1	1.5	66
Nuwara Eliya	110	63	57.3	26	23.6	89	80.9	6	5.5	10	9.1	16	14.5	0	0.0	2	1.8	3	2.7	110
Galle	201	115	57.2	43	21.4	158	78.6	7	3.5	13	6.5	20	10.0	6	3.0	5	2.5	12	6.0	201
Matara	73	55	75.3	10	13.7	65	89.0	3	4.1	3	4.1	6	8.2	0	0.0	0	0.0	2	2.7	73
Hambantota	72	31	43.1	28	38.9	59	81.9	8	11.1	0	0.0	8	11.1	1	1.4	2	2.8	2	2.8	72
Jaffna	101	55	54.5	24	23.8	79	78.2	5	5.0	5	5.0	10	9.9	1	1.0	2	2.0	9	8.9	101
Vavuniya	39	29	74.4	1	2.6	30	76.9	4	10.3	2	5.1	6	15.4	3	7.7	0	0.0	0	0.0	39
Batticaloa	92	64	69.6	15	16.3	79	85.9	2	2.2	6	6.5	8	8.7	0	0.0	0	0.0	5	5.4	92
Ampara	34	25	73.5	6	17.6	31	91.2	2	5.9	0	0.0	2	5.9	0	0.0	1	2.9	0	0.0	34
Kalmunai	94	64	68.1	20	21.3	84	89.4	3	3.2	4	4.3	7	7.4	2	2.1	1	1.1	0	0.0	94
Trincomalee	74	64	86.5	4	5.4	68	91.9	3	4.1	0	0.0	3	4.1	1	1.4	0	0.0	2	2.7	74
Kurunegala	220	155	70.5	30	13.6	185	84.1	13	5.9	10	4.5	23	10.5	2	0.9	4	1.8	6	2.7	220
Puttalam	105	82	78.1	13	12.4	95	90.5	3	2.9	4	3.8	7	6.7	0	0.0	0	0.0	3	2.9	105
Anuradhapura	114	90	78.9	13	11.4	103	90.4	2	1.8	1	0.9	3	2.6	6	5.3	0	0.0	2	1.8	114
Polonnaruwa	98	62	63.3	25	25.5	87	88.8	4	4.1	4	4.1	8	8.2	2	2.0	0	0.0	1	1.0	98
Badulla	122	76	62.3	27	22.1	103	84.4	6	4.9	7	5.7	13	10.7	1	0.8	4	3.3	1	0.8	122
Monaragala	61	36	59.0	13	21.3	49	80.3	3	4.9	2	3.3	5	8.2	2	3.3	1	1.6	4	6.6	61
Ratnapura	200	136	68.0	31	15.5	167	83.5	9	4.5	6	3.0	15	7.5	1	0.5	4	2.0	13	6.5	200
Kegalle	166	131	78.9	14	8.4	145	87.3	8	4.8	10	6.0	18	10.8	1	0.6	1	0.6	1	0.6	166
Mannar	16	12	75.0	2	12.5	14	87.5	0	0.0	2	12.5	2	12.5	0	0.0	0	0.0	0	0.0	16
Mullaitivu	16	11	68.8	4	25.0	15	93.8	1	6.3	0	0.0	1	6.3	0	0.0	0	0.0	0	0.0	16
Kilinochchi	15	8	53.3	4	26.7	12	80.0	0	0.0	2	13.3	2	13.3	0	0.0	1	6.7	0	0.0	15
<b>Total</b>	<b>4416</b>	<b>2746</b>	<b>62.2</b>	<b>812</b>	<b>18.4</b>	<b>3558</b>	<b>80.6</b>	<b>181</b>	<b>4.1</b>	<b>219</b>	<b>5.0</b>	<b>400</b>	<b>9.1</b>	<b>80</b>	<b>1.8</b>	<b>174</b>	<b>3.9</b>	<b>204</b>	<b>4.6</b>	<b>4416</b>

Source: Quarterly reports of District Chest Clinics

**Table 21: Distribution of Treatment Outcome of New Bacteriologically Confirmed PTB Cases by District in 2021**

District	Total Number Registered	Cured		Treatment Completed		Treatment Success		Died				All Deaths		Failure		Lost to Follow up		Not Evaluated		Total
		No	Rate	No	Rate	No	Rate	Confirmed as not due to TB		All Other Deaths		No	Rate	No	Rate	No	Rate	No	Rate	
								No	Rate	No	Rate									
Colombo	941	680	72.3	56	6.0	736	78.2	29	3.1	42	4.5	71	7.5	29	3.1	78	8.3	27	2.9	941
Gampaha	455	290	63.7	60	13.2	350	76.9	23	5.1	15	3.3	38	8.4	13	2.9	35	7.7	19	4.2	455
Kalutara	261	204	78.2	3	1.1	207	79.3	3	1.1	13	5.0	16	6.1	1	0.4	1	0.4	36	13.8	261
Kandy	217	164	75.6	13	6.0	177	81.6	5	2.3	19	8.8	24	11.1	5	2.3	1	0.5	10	4.6	217
Matale	56	44	78.6	0	0.0	44	78.6	5	8.9	4	7.1	9	16.1	1	1.8	2	3.6	0	0.0	56
Nuwara Eliya	72	63	87.5	0	0.0	63	87.5	2	2.8	4	5.6	6	8.3	0	0.0	2	2.8	1	1.4	72
Galle	154	115	74.7	8	5.2	123	79.9	7	4.5	9	5.8	16	10.4	5	3.2	4	2.6	6	3.9	154
Matara	65	55	84.6	2	3.1	57	87.7	3	4.6	3	4.6	6	9.2	0	0.0	0	0.0	2	3.1	65
Hambantota	38	31	81.6	0	0.0	31	81.6	3	7.9	0	0.0	3	7.9	1	2.6	2	5.3	1	2.6	38
Jaffna	75	55	73.3	6	8.0	61	81.3	1	1.3	4	5.3	5	6.7	1	1.3	1	1.3	7	9.3	75
Vavuniya	37	29	78.4	0	0.0	29	78.4	3	8.1	2	5.4	5	13.5	3	8.1	0	0.0	0	0.0	37
Batticaloa	76	64	84.2	0	0.0	64	84.2	2	2.6	6	7.9	8	10.5	0	0.0	0	0.0	4	5.3	76
Ampara	28	25	89.3	0	0.0	25	89.3	2	7.1	0	0.0	2	7.1	0	0.0	1	3.6	0	0.0	28
Kalmunai	75	64	85.3	4	5.3	68	90.7	2	2.7	2	2.7	4	5.3	2	2.7	1	1.3	0	0.0	75
Trincomalee	70	64	91.4	0	0.0	64	91.4	3	4.3	0	0.0	3	4.3	1	1.4	0	0.0	2	2.9	70
Kurunegala	181	155	85.6	0	0.0	155	85.6	10	5.5	8	4.4	18	9.9	2	1.1	3	1.7	3	1.7	181
Puttalam	92	82	89.1	0	0.0	82	89.1	3	3.3	4	4.3	7	7.6	0	0.0	0	0.0	3	3.3	92
Anuradhapura	100	90	90.0	0	0.0	90	90.0	1	1.0	1	1.0	2	2.0	6	6.0	0	0.0	2	2.0	100
Polonnaruwa	69	62	89.9	0	0.0	62	89.9	2	2.9	2	2.9	4	5.8	2	2.9	0	0.0	1	1.4	69
Badulla	93	76	81.7	4	4.3	80	86.0	5	5.4	5	5.4	10	10.8	1	1.1	3	3.2	-1	1.1	93
Monaragala	46	36	78.3	3	6.5	39	84.8	0	0.0	2	4.3	2	4.3	2	4.3	1	2.2	2	4.3	46
Ratnapura	166	136	81.9	6	3.6	142	85.5	9	5.4	4	2.4	13	7.8	1	0.6	4	2.4	6	3.6	166
Kegalle	152	131	86.2	3	2.0	134	88.2	7	4.6	8	5.3	15	9.9	1	0.7	1	0.7	1	0.7	152
Mannar	13	12	92.3	0	0.0	12	92.3	0	0.0	1	7.7	1	7.7	0	0.0	0	0.0	0	0.0	13
Mullaitivu	12	11	91.7	0	0.0	11	91.7	1	8.3	0	0.0	1	8.3	0	0.0	0	0.0	0	0.0	12
Kilinochchi	11	8	72.7	0	0.0	8	72.7	0	0.0	2	18.2	2	18.2	0	0.0	1	9.1	0	0.0	11
<b>Total</b>	<b>3555</b>	<b>2746</b>	<b>77.2</b>	<b>168</b>	<b>4.7</b>	<b>2914</b>	<b>82.0</b>	<b>131</b>	<b>3.7</b>	<b>160</b>	<b>4.5</b>	<b>291</b>	<b>8.2</b>	<b>77</b>	<b>2.2</b>	<b>141</b>	<b>4.0</b>	<b>132</b>	<b>3.7</b>	<b>3555</b>

Source: Quarterly reports of District Chest Clinics

**Table 22: Distribution of Treatment Outcome of New Clinically Diagnosis PTB Cases by District in 2021**

District	Total Number Registered	Treatment Completed		Died				All Deaths		Failure		Lost to Follow up		Not Evaluated		Total
				Confirmed as not due to TB		All Other Deaths										
		No	Rate	No	Rate	No	Rate	No	Rate	No	Rate	No	Rate	No	Rate	
Colombo	201	145	72.1	2	1.0	19	9.5	21	10.4	1	0.5	18	9.0	16	8.0	<b>201</b>
Gampaha	136	92	67.6	20	14.7	5	3.7	25	18.4	1	0.7	8	5.9	10	7.4	<b>136</b>
Kalutara	25	17	68.0	0	0.0	1	4.0	1	4.0	0	0.0	0	0.0	7	28.0	<b>25</b>
Kandy	91	65	71.4	2	2.2	9	9.9	11	12.1	0	0.0	3	3.3	12	13.2	<b>91</b>
Matale	10	8	80.0	0	0.0	1	10.0	1	10.0	0	0.0	0	0.0	1	10.0	<b>10</b>
Nuwara Eliya	38	26	68.4	4	10.5	6	15.8	10	26.3	0	0.0	0	0.0	2	5.3	<b>38</b>
Galle	47	35	74.5	0	0.0	4	8.5	4	8.5	1	2.1	1	2.1	6	12.8	<b>47</b>
Matara	8	8	100.0	0	0.0	0	0.0	0	0.0	0	0.0	0	0.0	0	0.0	<b>8</b>
Hambantota	34	28	82.4	5	14.7	0	0.0	5	14.7	0	0.0	0	0.0	1	2.9	<b>34</b>
Jaffna	34	18	52.9	7	20.6	1	2.9	8	23.5	0	0.0	1	2.9	7	20.6	<b>34</b>
Vavuniya	2	1	50.0	1	50.0	0	0.0	1	50.0	0	0.0	0	0.0	0	0.0	<b>2</b>
Batticaloa	16	15	93.8	0	0.0	0	0.0	0	0.0	0	0.0	0	0.0	1	6.3	<b>16</b>
Ampara	7	6	85.7	1	14.3	0	0.0	1	14.3	0	0.0	0	0.0	0	0.0	<b>7</b>
Kalmunai	19	16	84.2	1	5.3	2	10.5	3	15.8	0	0.0	0	0.0	0	0.0	<b>19</b>
Trincomalee	5	4	80.0	1	20.0	0	0.0	1	20.0	0	0.0	0	0.0	0	0.0	<b>5</b>
Kurunegala	39	30	76.9	3	7.7	2	5.1	5	12.8	0	0.0	1	2.6	3	7.7	<b>39</b>
Puttalam	13	13	100.0	0	0.0	0	0.0	0	0.0	0	0.0	0	0.0	0	0.0	<b>13</b>
Anuradhapura	14	13	92.9	1	7.1	0	0.0	1	7.1	0	0.0	0	0.0	0	0.0	<b>14</b>
Polonnaruwa	29	25	86.2	2	6.9	2	6.9	4	13.8	0	0.0	0	0.0	0	0.0	<b>29</b>
Badulla	29	23	79.3	1	3.4	2	6.9	3	10.3	0	0.0	1	3.4	2	6.9	<b>29</b>
Monaragala	15	10	66.7	3	20.0	0	0.0	3	20.0	0	0.0	0	0.0	2	13.3	<b>15</b>
Ratnapura	34	25	73.5	0	0.0	2	5.9	2	5.9	0	0.0	0	0.0	7	20.6	<b>34</b>
Kegalle	14	11	78.6	1	7.1	2	14.3	3	21.4	0	0.0	0	0.0	0	0.0	<b>14</b>
Mannar	3	2	66.7	0	0.0	1	33.3	1	33.3	0	0.0	0	0.0	0	0.0	<b>3</b>
Mullaitivu	4	4	100.0	0	0.0	0	0.0	0	0.0	0	0.0	0	0.0	0	0.0	<b>4</b>
Kilinochchi	4	4	100.0	0	0.0	0	0.0	0	0.0	0	0.0	0	0.0	0	0.0	<b>4</b>
<b>Total</b>	<b>871</b>	<b>644</b>	<b>73.9</b>	<b>55</b>	<b>6.3</b>	<b>59</b>	<b>6.8</b>	<b>114</b>	<b>13.1</b>	<b>3</b>	<b>0.3</b>	<b>33</b>	<b>3.8</b>	<b>77</b>	<b>8.8</b>	<b>871</b>

Source: Quarterly reports of District Chest Clinics



**Table 23: Distribution of Treatment Outcome of EPTB Cases by District in 2021**

District	Total Number Registered	Treatment Completed		Died				All Deaths		Failure		Lost to Follow up		Not Evaluated		Total
				Confirmed as not due to TB		All Other Deaths										
		No	Rate	No	Rate	No	Rate	No	Rate	No	Rate	No	Rate	No	Rate	
Colombo	345	282	81.7	13	3.8	10	2.9	23	6.7	2	0.6	13	3.8	25	7.2	345
Gampaha	232	160	69.0	21	9.1	5	2.2	26	11.2	0	0.0	15	6.5	31	13.4	232
Kalutara	115	84	73.0	0	0.0	5	4.3	5	4.3	0	0.0	1	0.9	25	21.7	115
Kandy	127	102	80.3	3	2.4	8	6.3	11	8.7	0	0.0	3	2.4	11	8.7	127
Matale	47	39	83.0	3	6.4	2	4.3	5	10.6	0	0.0	0	0.0	3	6.4	47
Nuwara Eliya	57	44	77.2	3	5.3	1	1.8	4	7.0	0	0.0	0	0.0	9	15.8	57
Galle	154	124	80.5	6	3.9	3	1.9	9	5.8	1	0.6	3	1.9	17	11.0	154
Matara	31	25	80.6	2	6.5	1	3.2	3	9.7	1	3.2	0	0.0	2	6.5	31
Hambantota	32	26	81.3	3	9.4	0	0.0	3	9.4	0	0.0	0	0.0	3	9.4	32
Jaffna	87	65	74.7	5	5.7	3	3.4	8	9.2	0	0.0	0	0.0	14	16.1	87
Vavuniya	7	6	85.7	1	14.3	0	0.0	1	14.3	0	0.0	0	0.0	0	0.0	7
Batticaloa	26	22	84.6	0	0.0	2	7.7	2	7.7	0	0.0	0	0.0	2	7.7	26
Ampara	10	9	90.0	1	10.0	0	0.0	1	10.0	0	0.0	0	0.0	0	0.0	10
Kalmunai	34	28	82.4	1	2.9	3	8.8	4	11.8	0	0.0	0	0.0	2	5.9	34
Trincomalee	14	11	78.6	0	0.0	0	0.0	0	0.0	0	0.0	0	0.0	3	21.4	14
Kurunegala	102	87	85.3	4	3.9	2	2.0	6	5.9	0	0.0	5	4.9	4	3.9	102
Puttalam	46	42	91.3	2	4.3	0	0.0	2	4.3	0	0.0	0	0.0	2	4.3	46
Anuradhapura	47	46	97.9	1	2.1	0	0.0	1	2.1	0	0.0	0	0.0	0	0.0	47
Polonnaruwa	25	24	96.0	0	0.0	1	4.0	1	4.0	0	0.0	0	0.0	0	0.0	25
Badulla	62	47	75.8	4	6.5	4	6.5	8	12.9	0	0.0	1	1.6	6	9.7	62
Monaragala	38	30	78.9	5	13.2	1	2.6	6	15.8	0	0.0	0	0.0	2	5.3	38
Ratnapura	93	70	75.3	6	6.5	6	6.5	12	12.9	0	0.0	0	0.0	11	11.8	93
Kegalle	63	58	92.1	0	0.0	1	1.6	1	1.6	1	1.6	0	0.0	3	4.8	63
Mannar	13	10	76.9	0	0.0	2	15.4	2	15.4	0	0.0	0	0.0	1	7.7	13
Mullaitivu	9	8	88.9	0	0.0	0	0.0	0	0.0	0	0.0	0	0.0	1	11.1	9
Kilinochchi	17	15	88.2	0	0.0	1	5.9	1	5.9	1	5.9	0	0.0	0	0.0	17
<b>Total</b>	<b>1833</b>	<b>1465</b>	79.9	<b>84</b>	4.6	<b>61</b>	3.3	145	7.9	<b>6</b>	0.3	<b>41</b>	2.2	<b>176</b>	9.6	<b>1833</b>

Source: Quarterly reports of District Chest Clinics

**Table 24: Distribution of Treatment Outcome of Re-Treatment TB Cases by District in 2021**

District	Total Number Registered	Cured		Treatment Completed		Treatment Success		Died				All Deaths		Failure		Lost to Follow up		Not Evaluated		Total
		No	Rate	No	Rate	No	Rate	Confirmed as not due to TB		All Other Deaths		No	Rate	No	Rate	No	Rate	No	Rate	
								No	Rate	No	Rate									
Colombo	192	53	27.6	53	27.6	106	55.2	7	3.6	18	9.4	25	13.0	0	0.0	43	22.4	18	9.4	192
Gampaha	70	27	38.6	20	28.6	47	67.1	6	8.6	0	0.0	6	8.6	1	1.4	9	12.9	7	10.0	70
Kalutara	35	20	57.1	3	8.6	23	65.7	0	0.0	0	0.0	0	0.0	0	0.0	1	2.9	11	31.4	35
Kandy	27	14	51.9	9	33.3	23	85.2	0	0.0	1	3.7	1	3.7	0	0.0	1	3.7	2	7.4	27
Matale	4	2	50.0	1	25.0	3	75.0	0	0.0	0	0.0	0	0.0	0	0.0	0	0.0	1	25.0	4
Nuwara Eliya	10	8	80.0	2	20.0	10	100.0	0	0.0	0	0.0	0	0.0	0	0.0	0	0.0	0	0.0	10
Galle	24	13	54.2	4	16.7	17	70.8	3	12.5	1	4.2	4	16.7	0	0.0	0	0.0	3	12.5	24
Matara	4	4	100.0	0	0.0	4	100.0	0	0.0	0	0.0	0	0.0	0	0.0	0	0.0	0	0.0	4
Hambantota	7	3	42.9	1	14.3	4	57.1	0	0.0	1	14.3	1	14.3	0	0.0	2	28.6	0	0.0	7
Jaffna	11	3	27.3	4	36.4	7	63.6	1	9.1	2	18.2	3	27.3	0	0.0	1	9.1	0	0.0	11
Vavuniya	7	6	85.7	1	14.3	7	100.0	0	0.0	0	0.0	0	0.0	0	0.0	0	0.0	0	0.0	7
Batticaloa	6	5	83.3	0	0.0	5	83.3	0	0.0	1	16.7	1	16.7	0	0.0	0	0.0	0	0.0	6
Ampara	3	1	33.3	0	0.0	1	33.3	0	0.0	0	0.0	0	0.0	0	0.0	0	0.0	2	66.7	3
Kalmunai	13	11	84.6	0	0.0	11	84.6	0	0.0	0	0.0	0	0.0	0	0.0	1	7.7	1	7.7	13
Trincomalee	13	8	61.5	1	7.7	9	69.2	2	15.4	0	0.0	2	15.4	0	0.0	0	0.0	2	15.4	13
Kurunegala	20	15	75.0	1	5.0	16	80.0	0	0.0	0	0.0	0	0.0	0	0.0	2	10.0	2	10.0	20
Puttalam	6	2	33.3	0	0.0	2	33.3	1	16.7	0	0.0	1	16.7	0	0.0	2	33.3	1	16.7	6
Anuradhapura	12	11	91.7	1	8.3	12	100.0	0	0.0	0	0.0	0	0.0	0	0.0	0	0.0	0	0.0	12
Polonnaruwa	6	6	100.0	0	0.0	6	100.0	0	0.0	0	0.0	0	0.0	0	0.0	0	0.0	0	0.0	6
Badulla	8	6	75.0	1	12.5	7	87.5	0	0.0	0	0.0	0	0.0	0	0.0	1	12.5	0	0.0	8
Monaragala	5	2	40.0	1	20.0	3	60.0	1	20.0	0	0.0	1	20.0	0	0.0	0	0.0	1	20.0	5
Ratnapura	14	9	64.3	3	21.4	12	85.7	1	7.1	1	7.1	2	14.3	0	0.0	0	0.0	0	0.0	14
Kegalle	7	5	71.4	2	28.6	7	100.0	0	0.0	0	0.0	0	0.0	0	0.0	0	0.0	0	0.0	7
Mannar	0	0	0.0	0	0.0	0	0.0	0	0.0	0	0.0	0	0.0	0	0.0	0	0.0	0	0.0	0
Mullaitivu	0	0	0.0	0	0.0	0	0.0	0	0.0	0	0.0	0	0.0	0	0.0	0	0.0	0	0.0	0
Kilinochchi	4	0	0.0	1	25.0	1	25.0	0	0.0	2	50.0	2	50.0	0	0.0	0	0.0	1	25.0	4
<b>Total</b>	<b>508</b>	<b>234</b>	<b>46.1</b>	<b>109</b>	<b>21.5</b>	<b>343</b>	<b>67.5</b>	<b>22</b>	<b>4.3</b>	<b>27</b>	<b>5.3</b>	<b>49</b>	<b>9.6</b>	<b>1</b>	<b>0.2</b>	<b>63</b>	<b>12.4</b>	<b>52</b>	<b>10.2</b>	<b>508</b>

Source: Quarterly reports of District Chest Clinics

**Table 25: Distribution of Treatment Outcome of Other TB Cases by District in 2021**

District	Total Number Registered	Cured		Treatment Completed		Died				Failure		Lost to Follow up		Not Evaluated		Total
						Confirmed as not due to TB		All Other Deaths								
		No	Rate	No	Rate	No	Rate	No	Rate	No	Rate	No	Rate	No	Rate	
Colombo	11	4	36.4	2	18.2	0	0.0	4	36.4	0	0.0	1	9.1	0	0.0	11
Gampaha	2	0	0.0	1	50.0	0	0.0	0	0.0	0	0.0	1	50.0	0	0.0	2
Kalutara	0	0	0.0	0	0.0	0	0.0	0	0.0	0	0.0	0	0.0	0	0.0	0
Kandy	0	0	0.0	0	0.0	0	0.0	0	0.0	0	0.0	0	0.0	0	0.0	0
Matale	0	0	0.0	0	0.0	0	0.0	0	0.0	0	0.0	0	0.0	0	0.0	0
Nuwara Eliya	0	0	0.0	0	0.0	0	0.0	0	0.0	0	0.0	0	0.0	0	0.0	0
Galle	1	0	0.0	1	100.0	0	0.0	0	0.0	0	0.0	0	0.0	0	0.0	1
Matara	0	0	0.0	0	0.0	0	0.0	0	0.0	0	0.0	0	0.0	0	0.0	0
Hambantota	0	0	0.0	0	0.0	0	0.0	0	0.0	0	0.0	0	0.0	0	0.0	0
Jaffna	0	0	0.0	0	0.0	0	0.0	0	0.0	0	0.0	0	0.0	0	0.0	0
Vavuniya	0	0	0.0	0	0.0	0	0.0	0	0.0	0	0.0	0	0.0	0	0.0	0
Batticaloa	0	0	0.0	0	0.0	0	0.0	0	0.0	0	0.0	0	0.0	0	0.0	0
Ampara	0	0	0.0	0	0.0	0	0.0	0	0.0	0	0.0	0	0.0	0	0.0	0
Kalmunai	0	0	0.0	0	0.0	0	0.0	0	0.0	0	0.0	0	0.0	0	0.0	0
Trincomalee	0	0	0.0	0	0.0	0	0.0	0	0.0	0	0.0	0	0.0	0	0.0	0
Kurunegala	0	0	0.0	0	0.0	0	0.0	0	0.0	0	0.0	0	0.0	0	0.0	0
Puttalam	0	0	0.0	0	0.0	0	0.0	0	0.0	0	0.0	0	0.0	0	0.0	0
Anuradhapura	0	0	0.0	0	0.0	0	0.0	0	0.0	0	0.0	0	0.0	0	0.0	0
Polonnaruwa	0	0	0.0	0	0.0	0	0.0	0	0.0	0	0.0	0	0.0	0	0.0	0
Badulla	0	0	0.0	0	0.0	0	0.0	0	0.0	0	0.0	0	0.0	0	0.0	0
Monaragala	0	0	0.0	0	0.0	0	0.0	0	0.0	0	0.0	0	0.0	0	0.0	0
Ratnapura	0	0	0.0	0	0.0	0	0.0	0	0.0	0	0.0	0	0.0	0	0.0	0
Kegalle	0	0	0.0	0	0.0	0	0.0	0	0.0	0	0.0	0	0.0	0	0.0	0
Mannar	0	0	0.0	0	0.0	0	0.0	0	0.0	0	0.0	0	0.0	0	0.0	0
Mullaitivu	0	0	0.0	0	0.0	0	0.0	0	0.0	0	0.0	0	0.0	0	0.0	0
Kilinochchi	0	0	0.0	0	0.0	0	0.0	0	0.0	0	0.0	0	0.0	0	0.0	0
<b>Total</b>	<b>5</b>	<b>2</b>	<b>40.0</b>	<b>2</b>	<b>40.0</b>	<b>0</b>	<b>0.0</b>	<b>0</b>	<b>0.0</b>	<b>0</b>	<b>0.0</b>	<b>1</b>	<b>20.0</b>	<b>0</b>	<b>0.0</b>	<b>5</b>

Source: Quarterly reports of District Chest Clinics

**Table 26: Distribution of Sputum Conversion of New PTB Cases at the End of the Intensive Phase by District in 2022**

DISTRICT	Total Number Registered	Sputum at 2nd Month						Sputum at 3rd Month						Died		Defaulted		Not Evaluated		Total
		Negative		Positive		Not Available		Negative		Positive		Not Available								
		No	Rate	No	Rate	No	Rate	No	Rate	No	Rate	No	Rate	No	Rate	No	Rate			
COLOMBO	1180	899	76.2	89	7.5	135	11.4	56	4.7	12	1.0	2	0.2	53	4.5	26	2.2	134	11.4	1180
GAMPAHA	506	369	72.9	40	7.9	68	13.4	48	9.5	12	2.4	42	8.3	31	6.1	6	1.2	40	7.9	506
KALUTARA	334	263	78.7	19	5.7	54	16.2	17	5.1	0	0.0	2	0.6	10	3.0	8	2.4	36	10.8	334
KANDY	229	170	74.2	43	18.8	3	1.3	34	14.8	6	2.6	3	1.3	9	3.9	3	1.3	7	3.1	229
MATALE	60	49	81.7	5	8.3	0	0.0	2	3.3	0	0.0	0	0.0	6	10.0	0	0.0	3	5.0	60
NUWARAELIYA	89	69	77.5	14	15.7	2	2.2	1	1.1	4	4.5	1	1.1	6	6.7	2	2.2	7	7.9	89
GALLE	186	153	82.3	19	10.2	4	2.2	8	4.3	4	2.2	0	0.0	8	4.3	1	0.5	12	6.5	186
MATARA	86	56	65.1	35	40.7	4	4.7	4	4.7	0	0.0	0	0.0	3	3.5	0	0.0	23	26.7	86
HAMBANTOTA	45	40	88.9	3	6.7	1	2.2	0	0.0	0	0.0	1	2.2	3	6.7	0	0.0	2	4.4	45
JAFFNA	93	53	57.0	6	6.5	30	32.3	29	31.2	2	2.2	7	7.5	4	4.3	0	0.0	5	5.4	93
VAVUNIYA	26	22	84.6	2	7.7	2	7.7	1	3.8	0	0.0	0	0.0	2	7.7	0	0.0	1	3.8	26
BATICALOA	75	61	81.3	5	6.7	2	2.7	5	6.7	0	0.0	1	1.3	7	9.3	0	0.0	2	2.7	75
AMPARA	35	29	82.9	2	5.7	0	0.0	2	5.7	0	0.0	0	0.0	2	5.7	0	0.0	2	5.7	35
KALMUNAI	104	85	81.7	13	12.5	10	9.6	1	1.0	1	1.0	0	0.0	2	1.9	0	0.0	15	14.4	104
TRINCOMALEE	95	73	76.8	15	15.8	4	4.2	11	11.6	1	1.1	0	0.0	7	7.4	0	0.0	3	3.2	95
KURUNEGALA	202	172	85.1	21	10.4	0	0.0	17	8.4	3	1.5	0	0.0	9	4.5	0	0.0	1	0.5	202
PUTTALAM	82	68	82.9	9	11.0	0	0.0	5	6.1	2	2.4	0	0.0	5	6.1	0	0.0	2	2.4	82
ANURADAPURA	143	120	83.9	15	10.5	0	0.0	10	7.0	1	0.7	0	0.0	4	2.8	0	0.0	8	5.6	143
POLONNARUWA	65	45	69.2	19	29.2	6	9.2	13	20.0	0	0.0	0	0.0	1	1.5	0	0.0	6	9.2	65
BADULLA	105	94	89.5	10	9.5	3	2.9	0	0.0	0	0.0	0	0.0	4	3.8	0	0.0	7	6.7	105
MONARAGALA	61	42	68.9	12	19.7	0	0.0	12	19.7	0	0.0	1	1.6	7	11.5	0	0.0	0	0.0	61
RATNAPURA	203	184	90.6	14	6.9	1	0.5	11	5.4	3	1.5	0	0.0	5	2.5	0	0.0	0	0.0	203
KEGALLE	160	141	88.1	6	3.8	9	5.6	5	3.1	1	0.6	0	0.0	8	5.0	0	0.0	5	3.1	160
MANNAR	13	9	69.2	2	15.4	0	0.0	2	15.4	0	0.0	0	0.0	2	15.4	0	0.0	0	0.0	13
MULLAITIVU	8	8	100.0	0	0.0	0	0.0	0	0.0	0	0.0	0	0.0	0	0.0	0	0.0	0	0.0	8
KILINOCHCHI	26	18	69.2	2	7.7	1	3.8	1	3.8	0	0.0	0	0.0	2	7.7	0	0.0	5	19.2	26
<b>TOTEL</b>	<b>4211</b>	<b>3292</b>	<b>78.2</b>	<b>420</b>	<b>10.0</b>	<b>339</b>	<b>8.1</b>	<b>295</b>	<b>7.0</b>	<b>52</b>	<b>1.2</b>	<b>60</b>	<b>1.4</b>	<b>200</b>	<b>4.7</b>	<b>46</b>	<b>1.1</b>	<b>326</b>	<b>7.7</b>	<b>4211</b>

**Table 27: Distribution of Sputum Conversion of Re-Treatment PTB Cases at the End of the Intensive Phase by District in 2022**

DISTRICT	Total Number Registered	Sputum at 3rd Month						Sputum at 4th Month						Died		Defaulted		Not Evaluated		Total
		Negative		Positive		Not Avilable		Negative		Positive		Not Avilable								
		No	Rate	No	Rate	No	Rate	No	Rate	No	Rate	No	Rate	No	Rate	No	Rate	No	Rate	
COLOMBO	168	114	67.9	7	4.2	38	0.0	2	1.2	2	1.2	0	0.0	5	3.0	17	10.1	28	16.7	168
GAMPAHA	91	56	61.5	2	2.2	15	16.5	7	7.7	0	0.0	8	8.8	5	5.5	5	5.5	18	19.8	91
KALUTARA	34	26	76.5	1	2.9	5	14.7	1	2.9	0	0.0	0	0.0	1	2.9	4	11.8	2	5.9	34
KANDY	21	18	85.7	2	9.5	0	0.0	0	0.0	0	0.0	0	0.0	0	0.0	2	9.5	1	4.8	21
MATALE	7	6	85.7	0	0.0	0	0.0	0	0.0	0	0.0	0	0.0	1	14.3	0	0.0	0	0.0	7
NUWARAELIYA	10	8	80.0	0	0.0	2	20.0	0	0.0	0	0.0	0	0.0	0	0.0	0	0.0	2	20.0	10
GALLE	21	18	85.7	1	4.8	1	4.8	0	0.0	0	0.0	1	4.8	1	4.8	0	0.0	2	9.5	21
MATARA	3	2	66.7	3	100.0	0	0.0	0	0.0	0	0.0	0	0.0	0	0.0	0	0.0	1	33.3	3
HAMBANTOTA	8	6	75.0	0	0.0	1	12.5	0	0.0	0	0.0	0	0.0	1	12.5	0	0.0	1	12.5	8
JAFFNA	17	14	82.4	0	0.0	2	11.8	0	0.0	0	0.0	0	0.0	1	5.9	0	0.0	2	11.8	17
VAVUNIYA	6	4	66.7	1	16.7	0	0.0	0	0.0	1	16.7	0	0.0	0	0.0	0	0.0	1	16.7	6
BATALOAO	5	4	80.0	0	0.0	0	0.0	0	0.0	0	0.0	0	0.0	1	20.0	0	0.0	0	0.0	5
AMPARA	6	6	100.0	0	0.0	0	0.0	0	0.0	0	0.0	0	0.0	0	0.0	0	0.0	0	0.0	6
KALMUNAI	8	5	62.5	3	37.5	5	62.5	0	0.0	0	0.0	2	25.0	0	0.0	0	0.0	3	37.5	8
TRINCOMALEE	10	7	70.0	1	10.0	0	0.0	0	0.0	2	20.0	0	0.0	1	10.0	0	0.0	0	0.0	10
KURUNEGALA	24	22	91.7	0	0.0	0	0.0	0	0.0	0	0.0	0	0.0	1	4.2	0	0.0	1	4.2	24
PUTTALAM	9	8	88.9	0	0.0	0	0.0	0	0.0	0	0.0	0	0.0	1	11.1	0	0.0	0	0.0	9
ANURADAPURA	16	14	87.5	2	12.5	0	0.0	2	12.5	0	0.0	0	0.0	0	0.0	0	0.0	0	0.0	16
POLONNARUWA	1	1	100.0	0	0.0	0	0.0	0	0.0	0	0.0	0	0.0	0	0.0	0	0.0	0	0.0	1
BADULLA	8	7	87.5	0	0.0	0	0.0	0	0.0	0	0.0	0	0.0	0	0.0	1	12.5	0	0.0	8
MONARAGALA	7	7	100.0	0	0.0	0	0.0	0	0.0	0	0.0	0	0.0	0	0.0	0	0.0	0	0.0	7
RATNAPURA	11	11	100.0	0	0.0	0	0.0	0	0.0	0	0.0	0	0.0	0	0.0	0	0.0	0	0.0	11
KEGALLE	16	14	87.5	1	6.3	0	0.0	0	0.0	1	6.3	0	0.0	1	6.3	0	0.0	0	0.0	16
MANNAR	1	1	100.0	0	0.0	0	0.0	0	0.0	0	0.0	0	0.0	0	0.0	0	0.0	0	0.0	1
MULLAITIVU	0	0	0.0	0	0.0	0	0.0	0	0.0	0	0.0	0	0.0	0	0.0	0	0.0	0	0.0	0
KILINOCHCHI	3	3	100.0	0	0.0	0	0.0	0	0.0	0	0.0	0	0.0	0	0.0	0	0.0	0	0.0	3
<b>TOTEL</b>	<b>511</b>	<b>382</b>	<b>74.8</b>	<b>24</b>	<b>4.7</b>	<b>69</b>	<b>13.5</b>	<b>12</b>	<b>2.3</b>	<b>6</b>	<b>1.2</b>	<b>11</b>	<b>2.2</b>	<b>20</b>	<b>3.9</b>	<b>29</b>	<b>5.7</b>	<b>62</b>	<b>12.1</b>	<b>511</b>

Table 28: All TB Case Detection by category by District of Registration in 2022

District	New Cases							Retreatment Cases							Other Previously Treated History unknown							Grand Total
	Bacteriology conform				Clinically Diagnosis (Sputum Negative)	EPTB	Total	Bacteriology conform				Clinically Diagnosis (Sputum Negative)	EPTB	Total	Bacteriology conform				Clinically Diagnosis (Sputum Negative)	EPTB	Total	
	Sputum PTB sp+ve	Sputum PTBsp-ve Culture Pos	Sputum PTBsp-ve WRD Pos	Total				Sputum PTB sp+ve	Sputum PTBsp-ve Culture Pos	Sputum PTBsp-ve WRD Pos	Total				Sputum PTB sp+ve	Sputum PTBsp-ve Culture Pos	Sputum PTBsp-ve WRD Pos	Total				
Colombo	941	38	201	1180	361	446	1987	106	3	32	141	30	21	192	8	0	1	9	2	0	11	2190
Gampaha	477	8	21	506	270	221	997	55	2	4	61	24	17	102	0	0	1	1	0	0	1	1100
Kalutara	316	1	17	334	61	128	523	27	0	3	30	3	3	36	0	0	0	0	0	0	0	569
Kandy	213	5	11	229	153	155	537	14	1	0	15	2	5	22	0	0	0	0	0	0	0	569
Matale	59	0	1	60	22	50	132	4	0	1	5	0	2	7	0	0	0	0	0	0	0	139
Nuwara Eliya	89	0	0	89	47	82	218	8	0	0	8	1	4	13	0	0	0	0	0	0	0	231
Galle	177	2	7	186	86	146	418	16	0	0	16	7	7	30	0	0	0	0	0	0	0	448
Matara	76	1	9	86	20	33	139	3	0	0	3	1	0	4	0	0	0	0	0	0	0	143
Hambantota	40	2	3	45	42	34	121	5	0	0	5	2	1	8	0	0	0	0	0	0	0	129
Jeffna	80	0	13	93	40	71	204	11	0	0	11	5	1	17	0	0	0	0	0	0	0	221
Vavuniya	25	0	1	26	7	15	48	5	0	0	5	0	1	6	0	0	0	0	0	0	0	54
Batticaloa	68	2	5	75	41	23	139	3	0	0	3	1	1	5	0	0	0	0	0	0	0	144
Ampara	31	4	0	35	17	11	63	3	1	1	5	1	0	6	0	0	0	0	0	0	0	69
Kalmunai	90	2	12	104	32	21	157	6	0	1	7	2	0	9	0	0	0	0	0	0	0	166
Trincomalee	88	5	2	95	37	23	155	7	0	0	7	2	1	10	0	0	0	0	0	0	0	165
Kurunegala	185	9	8	202	76	123	401	14	1	2	17	6	3	26	0	0	0	0	0	0	0	427
Puttalam	79	0	3	82	29	27	138	7	0	0	7	3	0	10	0	0	0	0	0	0	0	148
Anuradhapura	134	3	6	143	44	59	246	11	0	0	11	0	5	16	0	0	0	0	0	0	0	262
Polonnaruwa	56	8	1	65	25	34	124	1	0	0	1	0	0	1	0	0	0	0	0	0	0	125
Badulla	87	9	9	105	48	59	212	3	1	0	4	2	2	8	0	0	0	0	0	0	0	220
Monaragala	52	3	6	61	14	27	102	6	0	1	7	0	0	7	0	0	0	0	0	0	0	109
Ratnapura	163	6	34	203	26	90	319	5	0	4	9	1	1	11	0	0	0	0	0	0	0	330
Kegalle	148	6	6	160	36	85	281	12	0	1	13	1	3	17	0	0	0	0	0	0	0	298
Mannar	11	2	0	13	8	11	32	1	0	0	1	0	0	1	0	0	0	0	0	0	0	33
Mullaitivu	8	0	0	8	8	12	28	0	0	0	0	0	0	0	0	0	0	0	0	0	0	26
Kilinochchi	25	0	1	26	6	9	41	3	0	0	3	0	1	4	0	0	0	0	0	0	0	46
<b>Total</b>	<b>3718</b>	<b>116</b>	<b>377</b>	<b>4211</b>	<b>1556</b>	<b>1995</b>	<b>7762</b>	<b>336</b>	<b>9</b>	<b>50</b>	<b>395</b>	<b>94</b>	<b>79</b>	<b>568</b>	<b>8</b>	<b>0</b>	<b>2</b>	<b>10</b>	<b>2</b>	<b>0</b>	<b>12</b>	<b>8342</b>

\* Data from Quarterly Reports of Case Finding from districts.

**Table 29: Distribution of Treatment Outcome of WRD TB Cases by District in 2021**

District	Total Number Registered	Cured		Treatment Completed		Treatment Success		Died				All Deaths		Failure		Lost to Follow up		Not Evaluated		Total
		No	Rate	No	Rate	No	Rate	Confirmed as not due to TB		All Other Deaths		No	Rate	No	Rate	No	Rate	No	Rate	
								No	Rate	No	Rate									
Colombo	312	211	67.6	24	7.7	235	75.3	12	3.8	17	5.4	29	9.3	10	3.2	29	9.3	9	2.9	312
Gampaha	67	33	49.3	21	31.3	54	80.6	0	0.0	4	6.0	4	6.0	0	0.0	6	9.0	3	4.5	67
Kalutara	21	13	61.9	0	0.0	13	61.9	0	0.0	1	4.8	1	4.8	0	0.0	0	0.0	7	33.3	21
Kandy	23	14	60.9	5	21.7	19	82.6	1	4.3	3	13.0	4	17.4	0	0.0	0	0.0	0	0.0	23
Matale	3	3	100.0	0	0.0	3	100.0	0	0.0	0	0.0	0	0.0	0	0.0	0	0.0	0	0.0	3
Nuwara Eliya	1	1	100.0	0	0.0	1	100.0	0	0.0	0	0.0	0	0.0	0	0.0	0	0.0	0	0.0	1
Galle	10	7	70.0	1	10.0	8	80.0	0	0.0	1	10.0	1	10.0	1	10.0	0	0.0	0	0.0	10
Matara	14	10	71.4	1	7.1	11	78.6	2	14.3	0	0.0	2	14.3	0	0.0	0	0.0	1	7.1	14
Hambantota	8	7	87.5	0	0.0	7	87.5	0	0.0	0	0.0	0	0.0	0	0.0	1	12.5	0	0.0	8
Jaffna	17	12	70.6	1	5.9	13	76.5	1	5.9	1	5.9	2	11.8	0	0.0	0	0.0	2	11.8	17
Vavuniya	6	5	83.3	0	0.0	5	83.3	1	16.7	0	0.0	1	16.7	0	0.0	0	0.0	0	0.0	6
Batticaloa	19	14	73.7	0	0.0	14	73.7	1	5.3	4	21.1	5	26.3	0	0.0	0	0.0	0	0.0	19
Ampara	4	3	75.0	0	0.0	3	75.0	1	25.0	0	0.0	1	25.0	0	0.0	0	0.0	0	0.0	4
Kalmunai	9	6	66.7	1	11.1	7	77.8	2	22.2	0	0.0	2	22.2	0	0.0	0	0.0	0	0.0	9
Trincomalee	6	5	83.3	0	0.0	5	83.3	0	0.0	0	0.0	0	0.0	0	0.0	0	0.0	1	16.7	6
Kurunegala	23	22	95.7	0	0.0	22	95.7	1	4.3	0	0.0	1	4.3	0	0.0	0	0.0	0	0.0	23
Puttalam	7	5	71.4	0	0.0	5	71.4	1	14.3	0	0.0	1	14.3	0	0.0	0	0.0	1	14.3	7
Anuradhapura	16	14	87.5	0	0.0	14	87.5	0	0.0	0	0.0	0	0.0	0	0.0	0	0.0	2	12.5	16
Polonnaruwa	11	8	72.7	0	0.0	8	72.7	0	0.0	2	18.2	2	18.2	0	0.0	0	0.0	1	9.1	11
Badulla	12	9	75.0	1	8.3	10	83.3	1	8.3	0	0.0	1	8.3	0	0.0	0	0.0	1	8.3	12
Monaragala	2	2	100.0	0	0.0	2	100.0	0	0.0	0	0.0	0	0.0	0	0.0	0	0.0	0	0.0	2
Ratnapura	39	28	71.8	6	15.4	34	87.2	3	7.7	1	2.6	4	10.3	0	0.0	0	0.0	1	2.6	39
Kegalle	23	18	78.3	0	0.0	18	78.3	1	4.3	4	17.4	5	21.7	0	0.0	0	0.0	0	0.0	23
Mannar	0	0	0.0	0	0.0	0	0.0	0	0.0	0	0.0	0	0.0	0	0.0	0	0.0	0	0.0	0
Mullaitivu	3	3	100.0	0	0.0	3	100.0	0	0.0	0	0.0	0	0.0	0	0.0	0	0.0	0	0.0	3
Kilinochchi	1	1	100.0	0	0.0	1	100.0	0	0.0	0	0.0	0	0.0	0	0.0	0	0.0	0	0.0	1
<b>Total</b>	<b>656</b>	<b>454</b>	<b>69.2</b>	<b>60</b>	<b>9.1</b>	<b>514</b>	<b>78.4</b>	<b>28</b>	<b>4.3</b>	<b>38</b>	<b>5.8</b>	<b>66</b>	<b>10.1</b>	<b>11</b>	<b>1.7</b>	<b>36</b>	<b>5.5</b>	<b>29</b>	<b>4.4</b>	<b>656</b>

**Table 30: Distribution of Treatment Outcome of Sputum Negative Culture Positive TB Cases by District in 2021**

District	Total Number Registered	Cured		Treatment Completed		Treatment Success		Died						Failure		Lost to Follow up		Not Evaluated		Total
		No	Rate	No	Rate	No	Rate	Confirmed as not due to TB		All Other Deaths		All TB Deaths		No	Rate	No	Rate	No	Rate	
								No	Rate	No	Rate	No	Rate							
Colombo	21	13	61.9	5	23.8	18	85.7	0	0.0	1	4.8	1	4.8	0	0.0	1	4.8	1	4.8	21
Gampaha	16	8	50.0	7	43.8	15	93.8	0	0.0	0	0.0	0	0.0	0	0.0	0	0.0	1	6.3	16
Kalutara	3	0	0.0	0	0.0	0	0.0	0	0.0	0	0.0	0	0.0	0	0.0	0	0.0	3	100.0	3
Kandy	3	2	66.7	1	33.3	3	100.0	0	0.0	0	0.0	0	0.0	0	0.0	0	0.0	0	0.0	3
Matale	0	0	0.0	0	0.0	0	0.0	0	0.0	0	0.0	0	0.0	0	0.0	0	0.0	0	0.0	0
Nuwara Eliya	0	0	0.0	0	0.0	0	0.0	0	0.0	0	0.0	0	0.0	0	0.0	0	0.0	0	0.0	0
Galle	0	0	0.0	0	0.0	0	0.0	0	0.0	0	0.0	0	0.0	0	0.0	0	0.0	0	0.0	0
Matara	0	0	0.0	0	0.0	0	0.0	0	0.0	0	0.0	0	0.0	0	0.0	0	0.0	0	0.0	0
Hambantota	1	1	100.0	0	0.0	1	100.0	0	0.0	0	0.0	0	0.0	0	0.0	0	0.0	0	0.0	1
Jaffna	0	0	0.0	0	0.0	0	0.0	0	0.0	0	0.0	0	0.0	0	0.0	0	0.0	0	0.0	0
Vavuniya	0	0	0.0	0	0.0	0	0.0	0	0.0	0	0.0	0	0.0	0	0.0	0	0.0	0	0.0	0
Batticaloa	3	2	66.7	0	0.0	2	66.7	1	33.3	0	0.0	1	33.3	0	0.0	0	0.0	0	0.0	3
Ampara	3	3	100.0	0	0.0	3	100.0	0	0.0	0	0.0	0	0.0	0	0.0	0	0.0	0	0.0	3
Kalmunai	4	3	75.0	1	25.0	4	100.0	0	0.0	0	0.0	0	0.0	0	0.0	0	0.0	0	0.0	4
Trincomalee	3	3	100.0	0	0.0	3	100.0	0	0.0	0	0.0	0	0.0	0	0.0	0	0.0	0	0.0	3
Kurunegala	20	17	85.0	0	0.0	17	85.0	2	10.0	0	0.0	2	10.0	0	0.0	0	0.0	1	5.0	20
Puttalam	4	4	100.0	0	0.0	4	100.0	0	0.0	0	0.0	0	0.0	0	0.0	0	0.0	0	0.0	4
Anuradhapura	1	1	100.0	0	0.0	1	100.0	0	0.0	0	0.0	0	0.0	0	0.0	0	0.0	0	0.0	1
Polonnaruwa	1	1	100.0	0	0.0	1	100.0	0	0.0	0	0.0	0	0.0	0	0.0	0	0.0	0	0.0	1
Badulla	10	9	90.0	0	0.0	9	90.0	0	0.0	1	10.0	1	10.0	0	0.0	0	0.0	0	0.0	10
Monaragala	0	0	0.0	0	0.0	0	0.0	0	0.0	0	0.0	0	0.0	0	0.0	0	0.0	0	0.0	0
Ratnapura	2	2	100.0	0	0.0	2	100.0	0	0.0	0	0.0	0	0.0	0	0.0	0	0.0	0	0.0	2
Kegalle	3	2	66.7	0	0.0	2	66.7	1	33.3	0	0.0	1	33.3	0	0.0	0	0.0	0	0.0	3
Mannar	2	1	50.0	0	0.0	1	50.0	0	0.0	1	50.0	1	50.0	0	0.0	0	0.0	0	0.0	2
Mullaitivu	0	0	0.0	0	0.0	0	0.0	0	0.0	0	0.0	0	0.0	0	0.0	0	0.0	0	0.0	0
Kilinochchi	1	1	100.0	0	0.0	1	100.0	0	0.0	0	0.0	0	0.0	0	0.0	0	0.0	0	0.0	1
<b>Total</b>	<b>101</b>	<b>73</b>	<b>72.3</b>	<b>14</b>	<b>13.9</b>	<b>87</b>	<b>86.1</b>	<b>4</b>	<b>4.0</b>	<b>3</b>	<b>3.0</b>	<b>7</b>	<b>6.9</b>	<b>0</b>	<b>0.0</b>	<b>1</b>	<b>1.0</b>	<b>6</b>	<b>5.9</b>	<b>101</b>

Source: Quarterly reports of District Chest Clinics



