

Annual Report of the National Programme for Tuberculosis Control and Chest Diseases

2014



**National Programme for Tuberculosis Control and Chest Diseases
Ministry of Health
Sri Lanka**

❖ **Advisory Panel**

- Dr. K.N. Gamini Senavirathne – Director / NPTCCD
- Dr. Sudath Samaraweera – Deputy Director / NPTCCD

❖ **Writing Panel**

- Dr. Nirupa Pallewatte – Consultant Community Physician
- Dr. Pramil Liyanage – Medical Officer (Health Information)
- Dr.Chandima Hemachandra - Registrar in Community Medicine
- Janaka Thilakaratne – Development Assistant
- Saman Ranathunge – Project Officer GFATM

Compiled and Published by

Health Information Management Unit, NPTCCD

ISSN 2449-0156

Contents

| | |
|--|-----|
| List of Tables | iv |
| List of Figures | vi |
| List of Abbreviations | vii |
| Foreword | ix |
| Preface | x |
| PART I: Progress Report | |
| Introduction | 03 |
| Methods | 06 |
| Results | |
| Surveillance of Tuberculosis | 10 |
| Incidence of Tuberculosis | 10 |
| Case Detection of Tuberculosis | 11 |
| Treatment Outcome of Tuberculosis | 18 |
| DOTS Coverage | 23 |
| PART II: Activity Report | |
| Activities | 27 |
| Major Challenges | 33 |
| PART III: Administration Report | |
| OPD Attendance and Ward Admissions | 37 |
| Laboratory Services | 37 |
| X-Ray Facilities | 38 |
| BCG Vaccination | 39 |
| Detailed Tables | 41 |
| Maps | 63 |
| Annexure | 66 |

List of Tables

| | | |
|---------|--|----|
| Table 1 | <i>MDG Targets for 2010 and 2015</i> | 05 |
| Table 2 | <i>Distribution of All Cases of Extra Pulmonary Tuberculosis by Site in 2014</i> | 15 |
| Table 3 | <i>Utilization of TB/Respiratory Curative Care Facilities in 2014</i> | 37 |
| Table 3 | <i>Utilization of Diagnostic Care Facilities in 2014</i> | 38 |
| Table 5 | <i>EQA Results of Sputum Smear Microscopy in 2014</i> | 38 |

Detailed Tables

| | | |
|----------|---|----|
| Table 6 | <i>Notification of New TB Cases in Sri Lanka from 2004 – 2014</i> | 43 |
| Table 7 | <i>Annual Mortality of All TB Cases from 2004 – 2014</i> | 43 |
| Table 8 | <i>Distribution Rates of all TB cases by District of Residence in 2014</i> | 44 |
| Table 9 | <i>All TB Case Detection by District of Registration in 2014</i> | 45 |
| Table 10 | <i>Distribution of New Cases of TB by Province in 2014</i> | 46 |
| Table 11 | <i>Distribution of New Cases of TB by Age and Type in 2014</i> | 47 |
| Table 12 | <i>Distribution of New Cases of TB by Age and Sex in 2014</i> | 47 |
| Table 13 | <i>Age and Sex Distribution of All New TB Cases by District in 2014</i> | 48 |
| Table 14 | <i>Age and Sex Distribution of Smear Positive New TB Cases by District in 2014</i> | 49 |
| Table 15 | <i>Age and Sex Distribution of Smear Negative New TB Cases by District in 2014</i> | 50 |
| Table 16 | <i>Age and Sex Distribution of All New PTB Cases by District in 2014</i> | 51 |
| Table 17 | <i>Age and Sex Distribution of New EPTB Cases by District in 2014</i> | 52 |
| Table 18 | <i>Distribution of Treatment Outcome of All forms of TB by Districts in 2013</i> | 53 |
| Table 19 | <i>Distribution of Treatment Outcome of All Forms of New (PTB and EPTB) TB Cases by District in 2013</i> | 54 |
| Table 20 | <i>Distribution of Treatment Outcome of All New PTB Cases by District in 2013</i> | 55 |
| Table 21 | <i>Distribution of Treatment Outcome of New Sputum Positive PTB Cases by District in 2013</i> | 56 |
| Table 22 | <i>Distribution of Treatment Outcome of New Sputum Negative PTB Cases by District in 2013</i> | 57 |
| Table 23 | <i>Distribution of Treatment Outcome of EPTB Cases by District in 2013</i> | 58 |
| Table 24 | <i>Distribution of Treatment Outcome of Retreatment TB Cases by District in 2013</i> | 59 |
| Table 25 | <i>Distribution of Treatment Outcome of Other TB Cases by District in 2013</i> | 60 |
| Table 26 | <i>Distribution of Sputum Conversion of New PTB Cases at the End of the Intensive Phase by District in 2014</i> | 61 |
| Table 27 | <i>Distribution of Sputum Conversion of Retreatment PTB Cases at the End of the Intensive Phase by District in 2014</i> | 62 |

Annexure

| | | |
|-----------------|---|-----------|
| <i>Table 28</i> | <i>Provision of Financial Assistance to TB Patients in 2014</i> | <i>70</i> |
| <i>Table 29</i> | <i>Expenditure from Consolidated Funds in 2014</i> | <i>70</i> |
| <i>Table 30</i> | <i>Distribution of Sources of Funding for TB Control Activities in 2014(in USD)</i> | <i>71</i> |
| <i>Table 31</i> | <i>Training Programmes carried out at Central Level in 2014</i> | <i>71</i> |
| <i>Table 32</i> | <i>Training Programmes carried out at Provincial and District Level in 2014</i> | <i>72</i> |
| <i>Table 33</i> | <i>International Level Training, Meetings and Workshops in 2014</i> | <i>72</i> |
| <i>Table 34</i> | <i>Regional Training/Meetings and Workshops in Foreign Countries in 2014 under R-06 TB Grant, SAARC and SEARO-WHO</i> | <i>73</i> |
| <i>Table 35</i> | <i>Supervision and Monitoring Activities Carried Out by the Central Level Staff in 2014</i> | <i>73</i> |
| <i>Table 36</i> | <i>External Technical Assistance in 2014</i> | <i>74</i> |
| <i>Table 37</i> | <i>Health Education Activities Carried Out in 2014</i> | <i>74</i> |

List of Figures

| | | |
|-----------------|--|----|
| Figure 1 | <i>Incidence Rate of TB from 2004 – 2014</i> | 10 |
| Figure 2 | <i>Case Detection of TB by Type from 2004 - 2014</i> | 11 |
| Figure 3 | <i>Case Detection of TB by Type in 2014</i> | 11 |
| Figure 4 | <i>Case Detection of TB by District of Registration in 2014</i> | 12 |
| Figure 5 | <i>Percentage Distribution of New Cases of TB by Type and District in 2014</i> | 13 |
| Figure 6 | <i>Distribution of Smear Positive New TB Cases Detection by Districts in 2014</i> | 13 |
| Figure 7 | <i>Distribution of Smear Negative New TB Cases Detection by Districts in 2014</i> | 14 |
| Figure 8 | <i>Distribution of New Extra Pulmonary TB Cases Detection by Districts in 2014</i> | 15 |
| Figure 9 | <i>Distribution of All New Cases of TB by Age Group in 2014</i> | 16 |
| Figure 10 | <i>Proportion of Re-Treatment Categories by District in 2014</i> | 17 |
| Figure 11 | <i>Treatment Outcome of All Forms of TB Cases from 2003-2013</i> | 18 |
| Figure 12 | <i>Treatment Success Rate of All Forms of TB According To Districts in 2013</i> | 19 |
| Figure 13 | <i>Treatment Outcome of New Pulmonary TB Cases from 2003-2014</i> | 20 |
| Figure 14 | <i>Sputum Conversion Percentage of New Smear-Positive TB Cases by District in 2014</i> | 21 |
| Figure 15 | <i>Treatment Success Rates of New Smear Positive TB Cases by Districts in 2013</i> | 22 |
| Figure 16 | <i>Treatment Outcome Summary of TB Patients (New Smear Positive, New Smear Negative New EPTB and Re-Treatment) in 2013</i> | 23 |
| Figure 17 | <i>DOTS Coverage from 1997-2014 with Map of Year Achieved</i> | 23 |
| Maps | | |
| Figure 18 | <i>Map of Case Notification Distribution of TB in 2014</i> | 65 |
| Figure 19 | <i>Map of Case Incidence Distribution of TB in 2014</i> | 65 |
| Figure 20 | <i>Map of Case Detection Distribution of TB in 2014</i> | 66 |
| Figure 21 | <i>Map of Treatment Success Distribution of TB Cases in 2013</i> | 66 |
| Annexure | | |
| Figure 22 | <i>Organizational Structure of National TB Control Program (2014)</i> | 69 |
| Figure 23 | <i>IEC Materials Produced and Paper Advertisements Published in 2013</i> | 75 |

List of Abbreviations

| | |
|--------|--|
| AFB | Acid Fast Bacilli |
| AIDS | Acquired Immune Deficiency Syndrome |
| BCG | Bacillus Calmette–Guérin |
| DCC | District Chest Clinic |
| DOTS | Directly Observed Therapy Short-course |
| DST | Drug Susceptibility Testing |
| DTCO | District Tuberculosis Control Officers |
| EPTB | Extra Pulmonary Tuberculosis |
| EQA | External Quality Assessment |
| FDC | Fixed Dose Combination |
| GDF | Global Drug Facility |
| GFATM | Global Fund to fight AIDS, Tuberculosis and Malaria |
| HIV | Human Immune Deficiency Virus |
| IEC | Information, Education and Communication |
| MDG | Millennium Development Goals |
| MDR-TB | Multi Drug Resistant Tuberculosis |
| NPTCCD | National Programme for Tuberculosis Control and Chest Diseases |
| NTRL | National Tuberculosis Reference Laboratory |
| OPD | Out Patient Department |
| PTB | Pulmonary Tuberculosis |
| SAARC | South Asian Association for Regional Cooperation |
| SEARO | Regional Office for South-East Asia (WHO) |
| STAC | SAARC Tuberculosis and AIDS Centre |
| TB | Tuberculosis |
| WHO | World Health Organization |

Foreword

It is with great pleasure, I am presenting the Annual Report of the National Programme for Tuberculosis Control and Chest Diseases – 2014 which contains the important data on status of Tuberculosis in Sri Lanka in 2014.

In this year many new ventures were launched to increase the case detection, to improve the case holding and technological and management advances were introduced to the programme to improve the performance. I am confident that the results of these interventions will be reflected as positive outcomes in the near future.

I am thankful to the Secretary, Ministry of Health, Director General of Health Services and Deputy Director General (Public Health Services I) for the guidance given to us. I do highly appreciate the support rendered by staff of NPTCCD, District TB Control Officers (DTCOs), consultants and all other members of our team in both centre and periphery for the control of TB.

I am particularly thankful to GFATM, WHO and SEARO for the support rendered in most of our activities.

I appreciate the staff of the Health Information Management Unit for compiling this report and panel of writers for making this task a success.

Dr. K.N.Gamini Senevirathne

Director,

NPTCCD

Preface

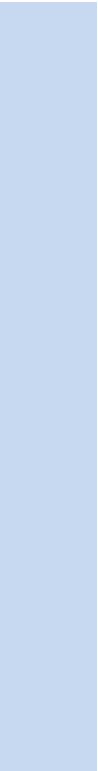
Progress, Activity and Administration Report is an annual publication of the National Programme for Tuberculosis Control and Chest Diseases.

The objective of this annual report is to provide information to the wide range of stakeholders on the progress and the performance of TB control activities in Sri Lanka.

Part I of the report gives the performance of the National Tuberculosis Control Programme. Data collected during 2014 are analyzed and presented. This would be useful for policy makers to take appropriate policy decisions in order to improve TB care services. In addition, District Tuberculosis Control Officers and other central and district level health professionals can utilize this information to focus their activities more precisely to reach national targets of TB Control.

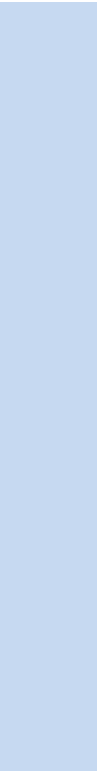
Part II of the report provides information regarding the tuberculosis control activities carried out in Sri Lanka during the year 2014 at central and district level.

Part III of the report describes the administrative framework of the NPTCCD and facilities affiliated to TB control services.



PART I

Progress Report



Introduction

National Programme for Tuberculosis Control and Chest Diseases

National Programme for Tuberculosis Control and Chest Diseases (NPTCCD) is a decentralized unit in the Ministry of Health, which is headed by the Director, NPTCCD. The programme functions under the Deputy Director General (Public Health Services I) of the Ministry of Health. The central unit of the NPTCCD, National Tuberculosis Reference Laboratory (NTRL), Central Drug Stores (CDS) of the NPTCCD, District Chest Clinics (DCCs) of Colombo and Gampaha and chest ward, DH Kopay are under the direct administrative purview of the Director NPTCCD.

NPTCCD provides its services through a network of chest clinics, chest wards and laboratories. Inward facilities for TB patients are provided at the National Hospital for Respiratory Diseases situated in Welisara and 12 other chest wards situated in government Hospitals.

Diagnostic services are provided through National TB Reference Laboratory, Regional culture laboratories in Kandy and Ratnapura, district chest clinic laboratories and 150 functioning microscopy centers.

Central Drug Store of the NPTCCD is responsible for estimation, procurement, supply and distribution of anti TB drugs to District Chest Clinics.

TB and respiratory disease control activities at the district level are carried out by the 26 District Chest Clinics situated in 25 districts. All the District Chest Clinics except Colombo and Gampaha are under the administrative scope of respective provincial and district health authorities.

NPTCCD is responsible for infrastructure development and financial management of the institutions under its direct administrative purview. It also provides technical guidance and financial assistance from funds obtained from donor agencies for implementation of the TB control activities at the district level.

In addition, NPTCCD is responsible for the formulation of policies and guidelines for control of TB and other respiratory diseases and for planning, implementation, monitoring and evaluation of the TB control activities carried out in the entire country. TB surveillance is another main activity carried out by the NPTCCD. It also acts as a coordinating body between the central ministry and provincial health sector and other governmental and nongovernmental organizations.

NPTCCD carries out training of medical and paramedical staff engaged in TB care and carries out public awareness through various channels of communication.

The Government of Sri Lanka is the main source of funding for the NPTCCD. In 2014 approximately, 220 million rupees was allocated from the government funds and it was mainly used for payment of salaries and wages and for major constructions. In addition, TB control activities are supported by the Global Fund to Fight AIDS Tuberculosis and Malaria (GFATM). WHO provides technical assistance to the programme and Global Drug Facility (GDF) provides Fixed Dose Combination (FDC) of anti TB drugs. In 2014, World Bank also provided financial assistance to upgrade NTRL to Bio Safety Level 3 and to strengthen TB control Activities at provincial Level.

Methods

Vision

Sri Lanka free of Tuberculosis and other respiratory diseases

Mission

To contribute to the socio-economic development of the nation by committing ourselves to create a TB free Sri Lanka and to reduce the morbidity and mortality due to respiratory diseases by formulation of policies, planning, coordinating and monitoring of all TB and other respiratory disease control activities in the country.

Objectives

- ✓ To ensure that every patient with TB and respiratory diseases have access to effective diagnosis, treatment and cure
- ✓ To interrupt transmission of TB
- ✓ To prevent the emergence of multidrug-resistant tuberculosis
- ✓ To reduce the social and economic burden caused by TB and other respiratory diseases

Targets

To reach and thereafter to sustain the 2005 global targets achieving at least 70% case detection and at least 85% treatment success among TB cases under DOTS; in order to,

- ✓ reach the interim targets of halving TB deaths and prevalence
- ✓ halt and reverse the incidence of TB as stated in the Millennium Development Goals set for 2015 (MDG-6 Target 6c)(Table 1)

Table 1: MDG Targets for 2010 and 2015

| Indicator | 1990 Estimates | 2010 Targets | 2015 Targets |
|--------------------------------|----------------|--------------|--------------|
| Case Detection Rate under DOTS | N/A | 86% | 90% |
| Treatment Success Rate | N/A | >85% | >85% |
| Incidence | 60/ 100k | 42/100K | 30/100k |
| Mortality | 10/100k | 2.2/100k | 2.0/100k |

Surveillance of TB

Notification System

➤ TB Case Notification

TB is a notifiable disease since 1948. NPTCCD receives case notifications in a special form (Health 816 A) from District Chest Clinics, other government health institutions and from private health institutions.

Once a TB patient is diagnosed at a chest clinic, he or she should be registered in the District TB Register and should be notified to Central unit of the NPTCCD and to National Epidemiological Surveillance System through Medical Officer of Health. Patients diagnosed at other institutions are also referred to the relevant chest clinics for registration, notification and further management.

➤ TB Death Notification

TB deaths are notified to the central unit by Health 814.A detailed report on deaths occurred among TB patients during the period of treatment are collected by form TB 17.

Deaths due to TB are also notified to the Registrar General's Department through vital registration system.

Monthly and Quarterly Records and Returns

Data on case detection (TB-08), sputum conversion (TB-09), treatment outcome (TB-10), programme management (TB-12) and TB and Non TB wards (TB-13) are collected quarterly from District Chest Clinics.

TB screening activities in prisons and OPD returns on TB suspects are collected monthly on the standard data collection forms. Data on culture specimens are sent from NTRL to Central Unit. DTCO is responsible for sending completed returns and reports accurately and timely.

Presentation of Data

NPTCCD analyses the data and compiles the national reports. Performance at district level is discussed at the review meetings held bi-monthly at NPTCCD as well as at the district reviews held annually in respective districts.

Dissemination of Data

NPTCCD provides information to government and international organizations such as Epidemiology unit and other units of Ministry of Health, Central Bank of Sri Lanka, WHO, SAARC, STAC, GFATM etc.

In addition, information on TB is provided to provincial and regional health authorities and to DTCOs for further reference and interventions.

Indices

The main indices used to measure the progress in TB control are,

- Case Detection Rate
- Treatment Success Rate
- Sputum Conversion Rate
- Lost to follow up Rate
- Death Rate

Case Detection Rate

The term “*detection*” as used in this report, means that a patient is diagnosed as having TB and is reported to the NPTCCD by TB-08.

Case Detection Rate is defined as “*percentage of total number of incident TB cases notified out of the total number of estimated incident cases of TB during the given year*”.

$$\text{Case Detection Rate} = \frac{\text{Total number of all forms (new / relapse) of TB cases notified during the specified year}}{\text{Estimated total number of incidence cases of TB for the same year}} \times 100$$

Incidence of TB

The Incidence of TB is defined by the WHO as the number of new and relapse cases reported in a specified time period.

Estimation of TB Incidence

Estimation of TB incidence is calculated by WHO using a mathematical model which is revised annually. Accordingly, the case detection rate in this report is based on 2013 WHO estimates (66.0 per 100,000 population).

Treatment Success Rate

Treatment Success Rate is defined as the proportion of TB cases registered in a given year that **successfully completed** their entire course of treatment with or without bacteriological confirmation of cure (“cured” + “treatment completed”).

$$\text{Treatment Success Rate} = \frac{\text{Number of patients who have successfully completed treatment in the given period}}{\text{Number of patients registered in the same period}} \times 100$$

Sputum Conversion Rate

Sputum Conversion rate is the percentage of smear-positive pulmonary TB cases registered in a specified period that converted from smear positive to smear negative at the end of intensive phase of treatment.

$$\text{Sputum Conversion Rate} = \frac{\text{Number of smear-positive pulmonary TB cases registered in a specified period that are smear negative at the end of the intensive phase of treatment}}{\text{Total number of smear-positive pulmonary TB cases registered for treatment in the same period}} \times 100$$

Lost to follow up Rate

The Lost to follow up Rate is defined as the percentage of TB cases registered in a specified period that interrupted treatment for more than two consecutive months.

$$\text{Lost to follow up Rate} = \frac{\text{Number of TB cases registered in a specified period that interrupted treatment for more than two consecutive months}}{\text{Total number of TB cases registered in the same period}} \times 100$$

Death Rate

The Death rate is defined as the percentage of TB cases registered in a specified period that died from any reason during the course of treatment.

$$\text{Death Rate} = \frac{\text{Number of TB cases registered in a specified period that died from any reason during the course of the treatment}}{\text{Total number of TB cases registered in the same period}} \times 100$$

DOTS Population Coverage

DOTS population coverage is the percentage of people living in areas where health service has adopted the Directly Observed Therapy Short-course (DOTS) strategy. The units of population covered are usually the administrative districts in the country and the outcome is usually expressed as a percentage of the national population.

Results

Surveillance of Tuberculosis

➤ TB Case Notifications (H 816 A)

During the year 2014, 8409 cases of all forms of Tuberculosis were notified to the center by the form H 816 A (Table 6). In contrast to this, registered TB cases reported to the NPTCCD by TB 08 were 9473 (Table 9).

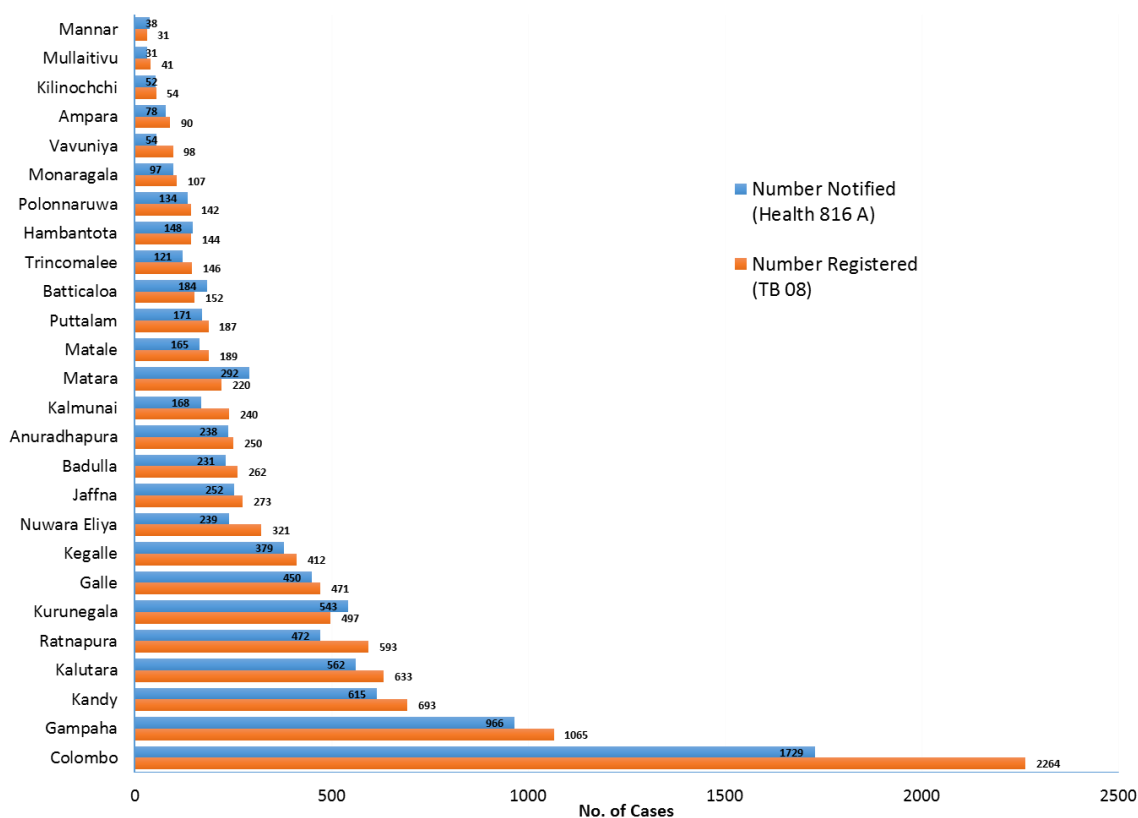


Figure 1: Case Detection and Notification of TB by District in 2014

➤ TB Death Notification (H 814)

During the year 2014, 309 TB deaths were notified by H 814 (Table 7).

Incidence of Tuberculosis

The incidence (new and relapse) rate of TB in 2014, in Sri Lanka was 43.7 (8692 new and 288 relapse cases) per 100,000 population (Table 9).

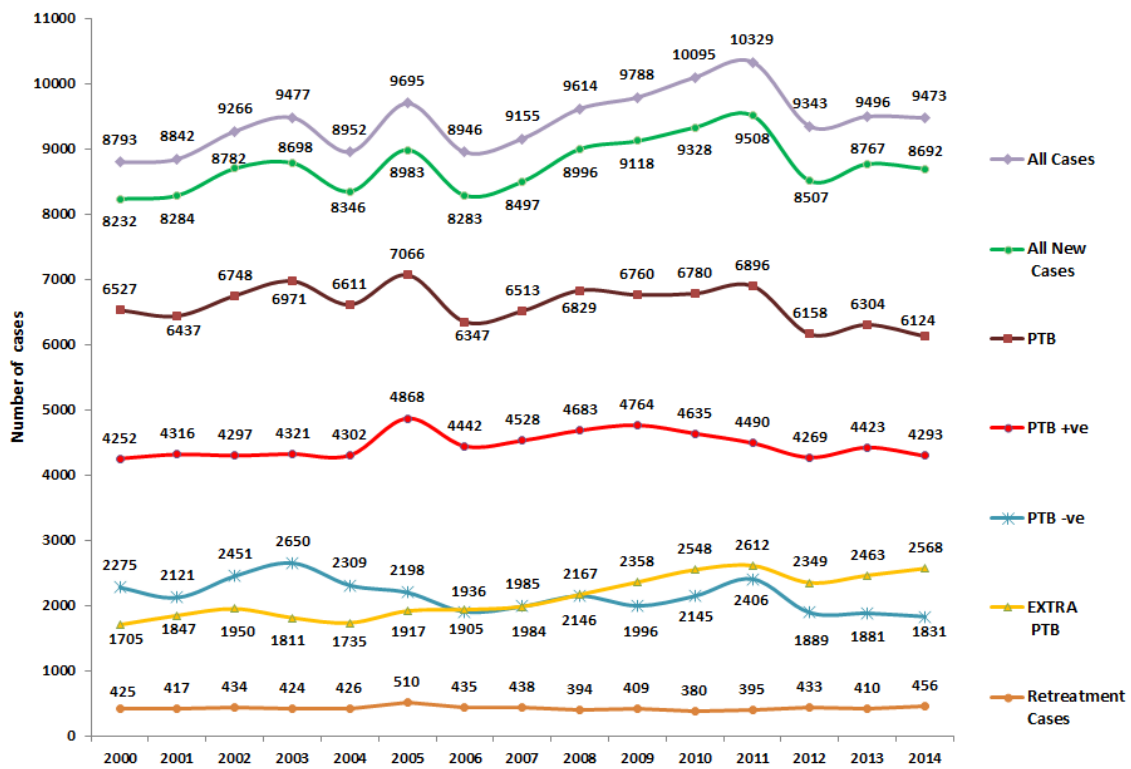


Figure 2: Incidence Rate of TB from 2004 – 2014

Case Detection

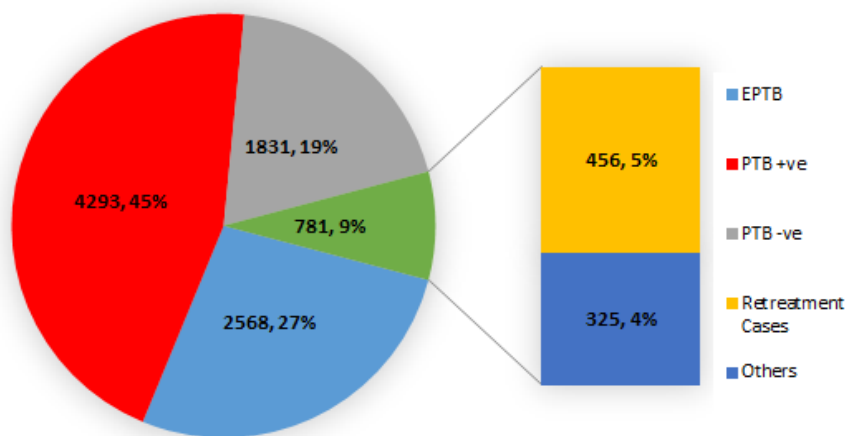
The total number of all forms of TB cases reported from DCCs was 9473. When compared to 2013, there was a slight decrease of all forms of TB in 2014 (Figure 3). Out of this 8692(91.7%) were new cases and 456 were re-treatment cases. Out of all new cases, 4293 (49.4%) were smear-positive PTB, 1831 (21.1%) were smear negative PTB and 2568 (29.5%) were EPTB cases (Figure 3). A total of 6124 (64.6%) new pulmonary cases were reported.

A gradual decline of PTB + ve patients was observed during the period of 2009 to 2012. In 2013, there was an increase of PTB + ve cases but in year 2014 there was a slight decrease of PTB + ve cases again.



There is high disparity of detection of TB cases between districts (Figure 5). The highest number of TB cases was detected from Colombo 2342 (24.7%). High numbers of cases were reported from Gampaha (1066), Kandy (676), Kalutara (636), Kurunegala (568) and Ratnapura (551) districts respectively.

Colombo district also accounted for highest number of relapse cases, 76 (26.4%) of total relapse cases and 44.3% (47) of total lost to follow up cases (Table 9). Lowest number of TB cases (36) has been reported from Mullaitivu district.



Fig

Figure 4: Case Detection of TB by Type in 2014

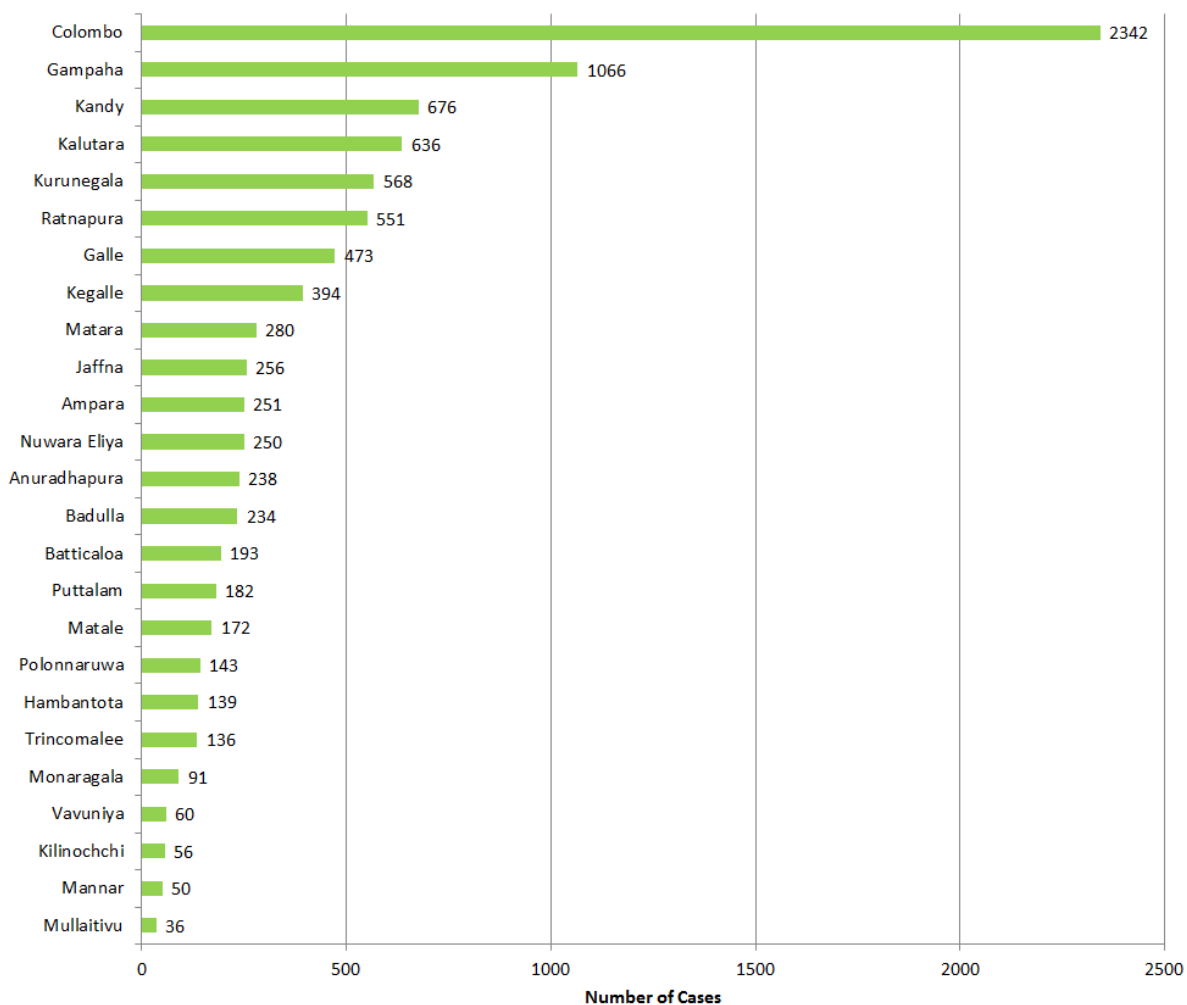


Figure 5: TB Case Detection by District of Registration in 2014

New TB Cases

There is disparity of distribution of new cases among districts (Figure 5). In Anuradhapura district, more than 60% of cases are sputum positive while in Jaffna, Kandy and Mannar, sputum positive cases account for less than 40% of total cases reported in respective districts. The number of smear negative cases detected was more than the smear positives in Kalmunai district only.

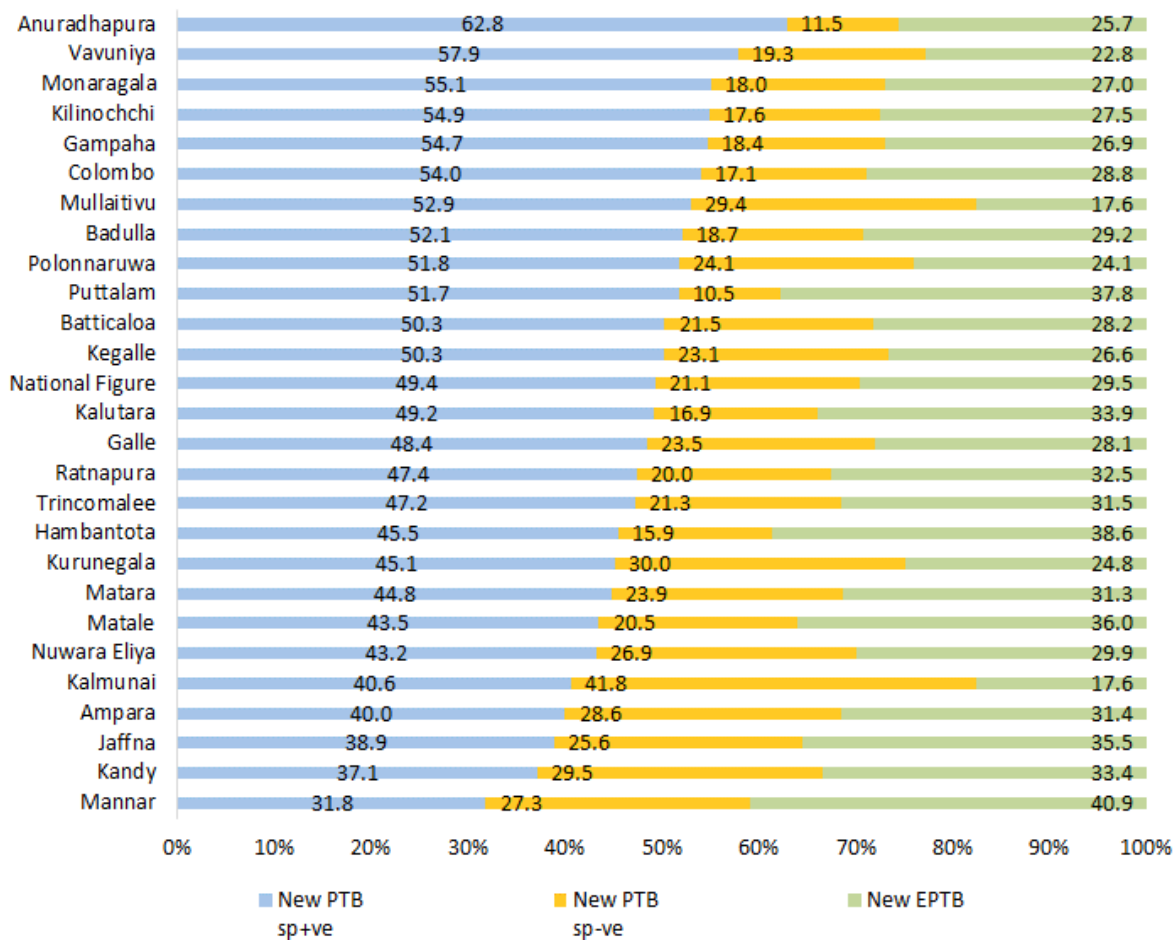


Figure 6: Percentage Distribution of New Cases of TB by Type and District in 2014

➤ Sputum Smear Positive New Pulmonary TB

The highest number (1120) and rate (48.2 per 100,000 population) of sputum smear positive cases were reported from Colombo district and this accounts for 26% of national figure. Second highest number of smear positive pulmonary TB cases was reported from Gampaha (536) though rate was 22.9 per 100,000 population (Figure 7).

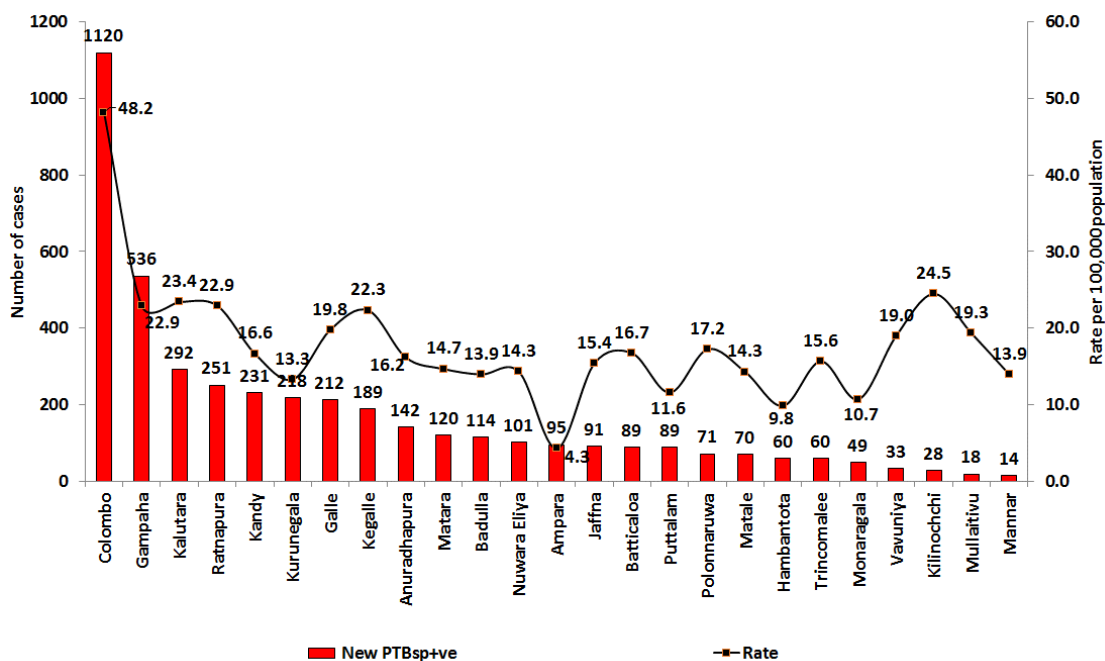


Figure 7: Distribution of Smear Positive New TB Cases Detection by Districts in 2014

High numbers of cases were reported from Kalutara (292), Ratnapura (251) and Kandy (231) districts respectively. However, higher sputum positive rates per 100,000 population were reported from Kilinochchi (24.5), Kalutara (23.4), Ratnapura (22.9) and Kegalle (22.3) districts (Figure 7).

➤ **Sputum Smear Negative New Pulmonary TB**

The highest number and rate of sputum smear negative cases was reported from Colombo district 355(15.3 per 100,000 population). However, higher rates were reported from Ampara (13.5 per 100,000 population), Kandy (13.3 per 100,000 population) and Mannar (11.9 per 100,000) respectively. The number of smear negative cases detected was more than the smear positives in Kalmunai district (Figure 8).

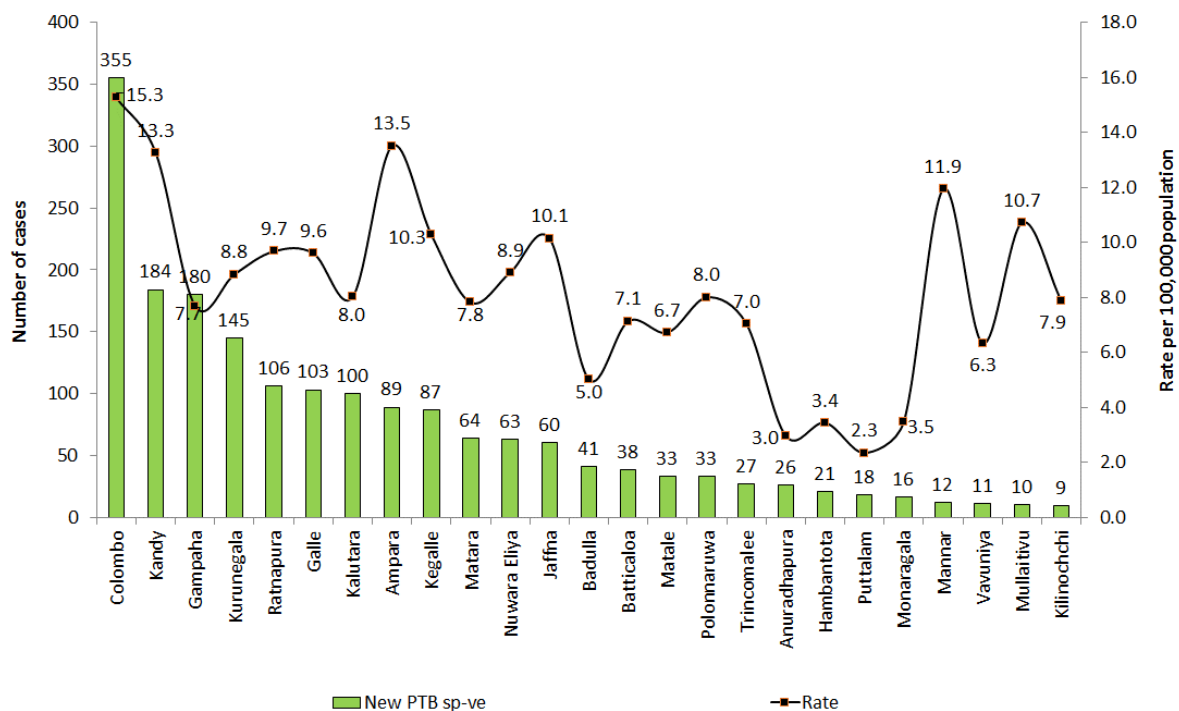


Figure 8: Distribution of Smear Negative New TB Cases Detection by Districts in 2014

➤ Extra Pulmonary TB

New EPTB Case Detection

Total of 2568 cases of new extra pulmonary TB were reported in 2014. Colombo District accounted for highest number and rate of EPTB cases 598 (25.7 per 100,000 population). The second highest rate (17.9 per 100,000 population) of EPTB was reported from Mannar though only 18 cases were reported (Figure 9).

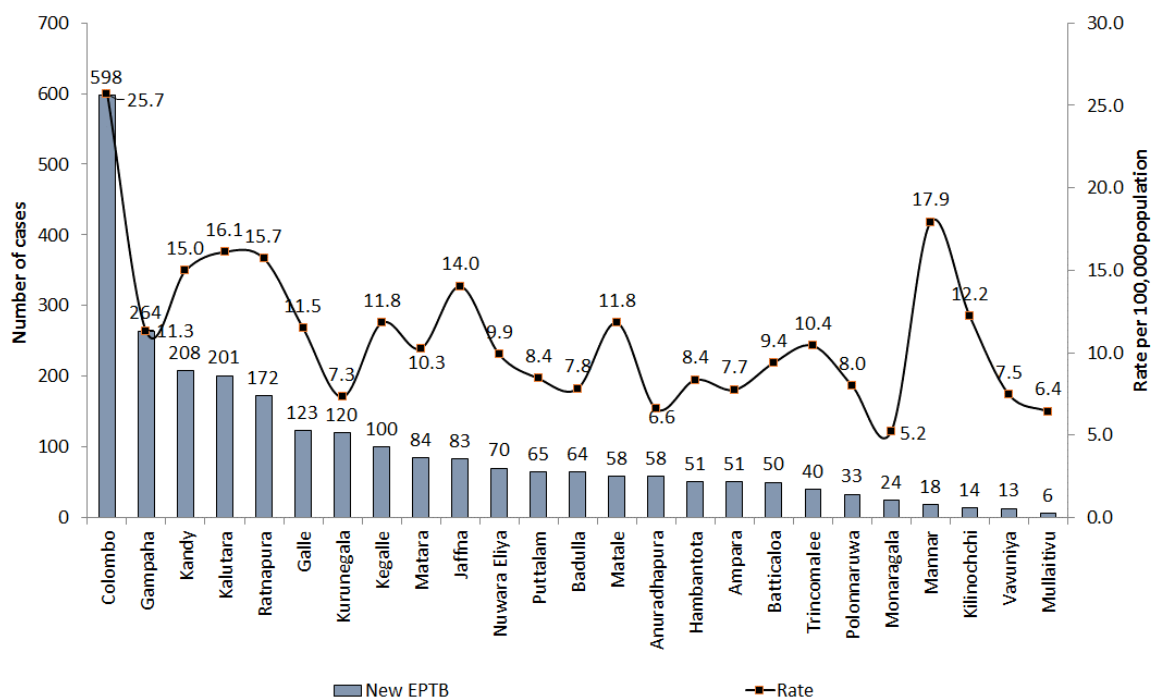


Figure 9: Distribution of New Extra Pulmonary TB Cases Detection by Districts in 2014

Sites of EPTB Cases

Out of all EPTB cases, TB adenitis accounted for 598 cases (22.5%), and 623 (23.5%) were cases of Tuberculous Pleural Effusion & pleurisy. In addition, 99 (3.7%) cases of Tuberculous Meningitis, 57 (2.1%) cases of Tuberculosis of nervous system-unspecified, 81 (3.1%) cases of Tuberculosis of Eye cases were reported in 2014 (Table 2).

| Classification | Number | Percentage |
|-------------------------------|-------------|--------------|
| MENINGITIS | 99 | 3.7 |
| TB ADENITIS | 598 | 22.5 |
| PLEURAL EFFUSION/ PLEURISY | 623 | 23.5 |
| EMPHYEMA | 10 | 0.4 |
| SPINAL TB | 97 | 3.7 |
| PERICARDITIS | 13 | 0.5 |
| TB IN BONES & JOINTS | 130 | 4.9 |
| INTESTINAL TB | 50 | 1.9 |
| PERITONITIS | 18 | 0.7 |
| GENITO URINARY TB | 77 | 2.9 |
| TB in EYE | 81 | 3.1 |
| CNS | 57 | 2.1 |
| TB in Skin | 66 | 2.5 |
| Larynx | 2 | 0.1 |
| TB OF OTHER ORGANS | 731 | 27.6 |
| TOTAL | 2652 | 100.0 |

Table2: Distribution of All Cases of EPTB Cases by Site in 2014

In 2014, 25 miliary TB cases and 33 patients with primary TB complex were reported.

➤ **Age and Sex Distribution of New TB Cases**

The highest number (1778) of new TB cases was in 45-54 age group. The lowest number was in 0-14 age group (313 cases, 3.6 %) out of 8692 all new cases. 60.3% (5241) were in the productive age group of 15-54. More males (5656, 65%) were detected than the females (3036,35%). The highest number of new TB cases among males was found in the age group of 45-54 years (5656,22.2%), while that in the females was in the same age group 45-54 (3036,17.3%) (Table 13).

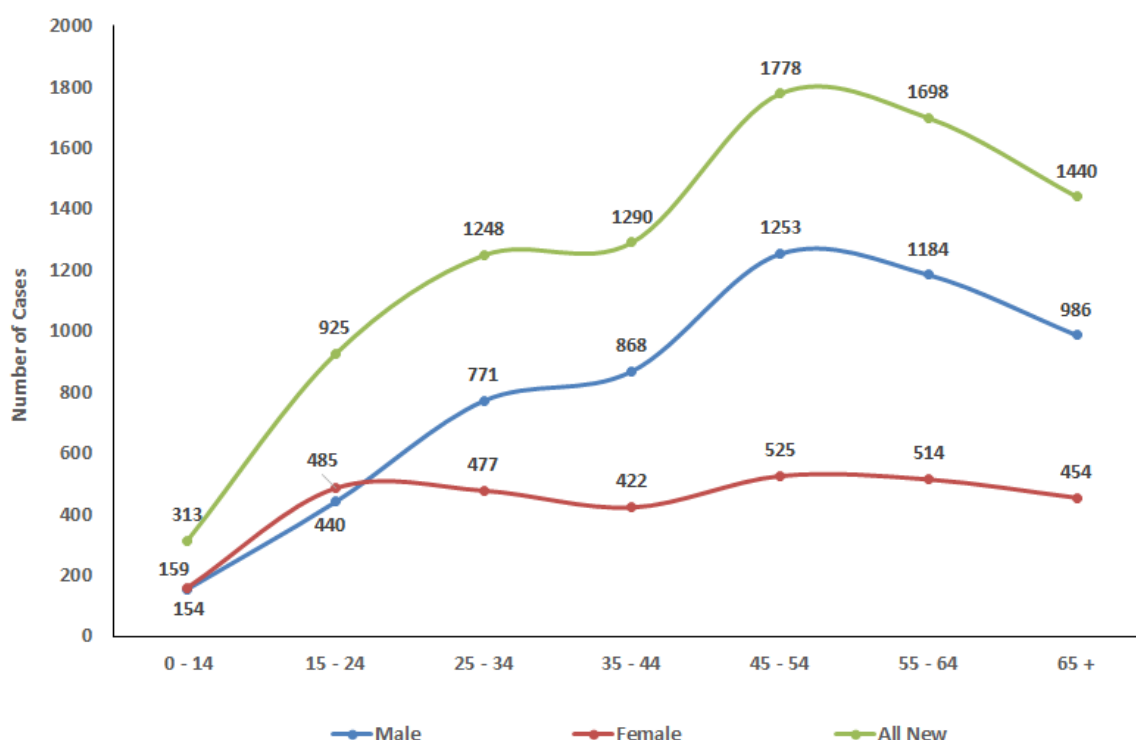


Figure 10: Distribution of All New Cases of TB by Age Group in 2014

Re-Treatment TB Cases

In 2014, 456(4.8%) re-treatment cases were reported. 288(3% out of all cases of TB) *Relapse*, 62 (0.65%) *Treatment after Failure* and 106 (1.1%) *Treatment after lost to follow up* accounted for the total of 456 cases (Table 9).

The highest number of re-treatment cases (130, 28.5%) was reported from Colombo district and the second highest number was from Gampaha district (61,13.4%). The total number of retreatment cases in 2014 was higher than in 2013 (410).

Among *Relapsed* cases the higher numbers were reported from Colombo, Gampaha, Kalutara, and Kandy districts respectively (Table 9).

Treatment after Failure cases were reported in higher numbers in Gampaha, Colombo and Badulla districts.

Colombo, Gampaha, Galle and Rathnapura were the districts which reported higher numbers of *Treatment after lost to follow up* cases. Colombo district contributed a significant number of cases for the national figure

In Mannar, Monaragala, Kalmunai, Ampara and Matale districts, all retreatment cases consisted of relapses. (Figure 11).

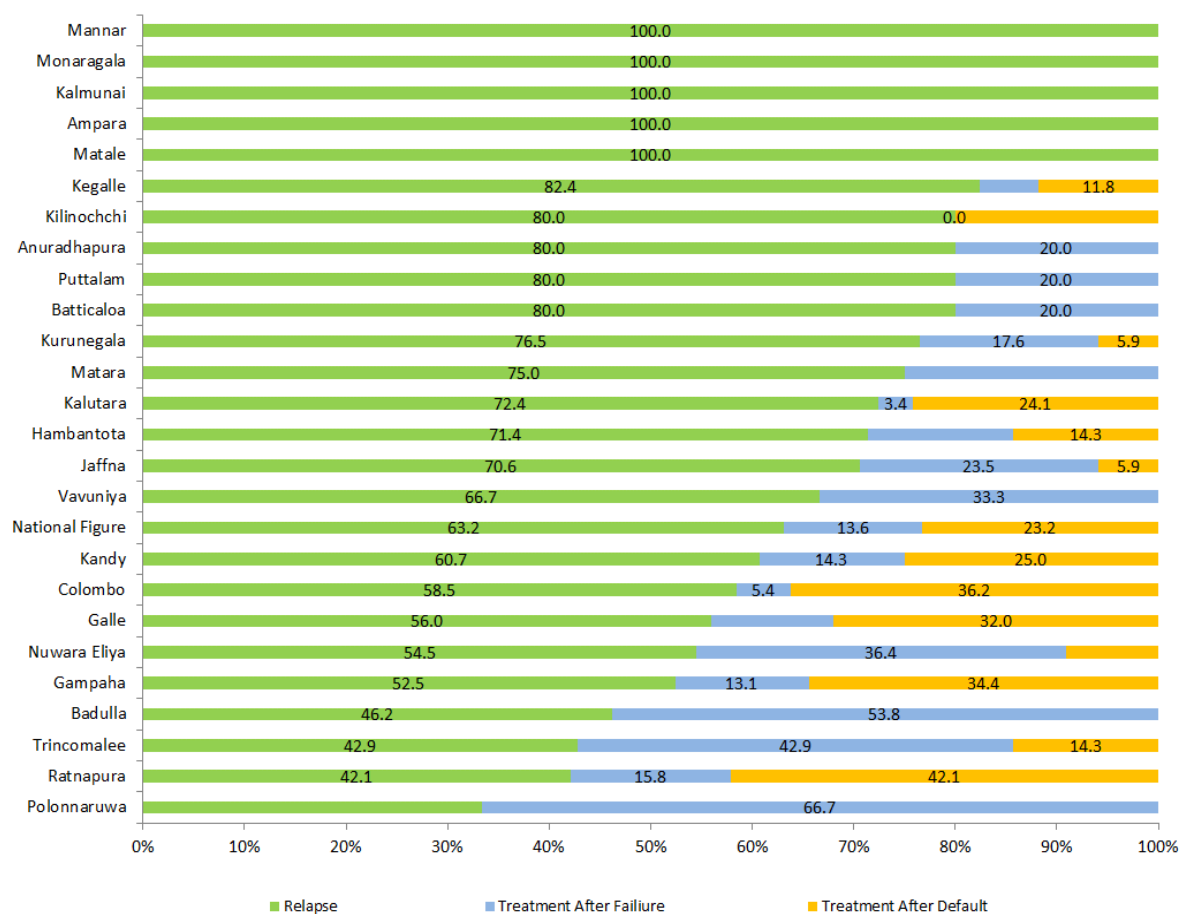


Figure 11: Proportion of Re-Treatment Categories by District in 2014

The incidence of MDR-TB is low in Sri Lanka when compared to other countries in the SEARO region. Thirteen cases of MDR-TB were reported in year 2014 and 11(85%) of them were enrolled in treatment.

Table 3: Enrollment of MDR TB cases in treatment 2010-214

TB/HIV Co-Infection

HIV testing of all TB patients was made mandatory since 2014. In 2014, 7409 (78.2%) TB patients were screened for HIV. Of these patients, 12 patients were found positive. In addition, patients were 25 known HIV

| | 2010 | 2011 | 2012 | 2013 | 2014 |
|--|----------------|----------------|-----------------|-----------------|-----------------|
| No of MDRTB patient's laboratory confirmed | 8 | 12 | 5 | 4 | 13 |
| No planned to enroll (estimated No) | 14 | 14 | 14 | 10 | 15 |
| No enrolled in the same year | 4 | 5 | 4 | 4 | 11 |
| No enrolled in the next year | 1 | 4 | 1 | - | - |
| Total No put on Treatment | 5 (63%) | 9 (75%) | 5 (100%) | 4 (100%) | 11 (85%) |

patients at the time of diagnosis of TB contributing to the total of 37 patients with HIV/ TB co-infection in 2014.

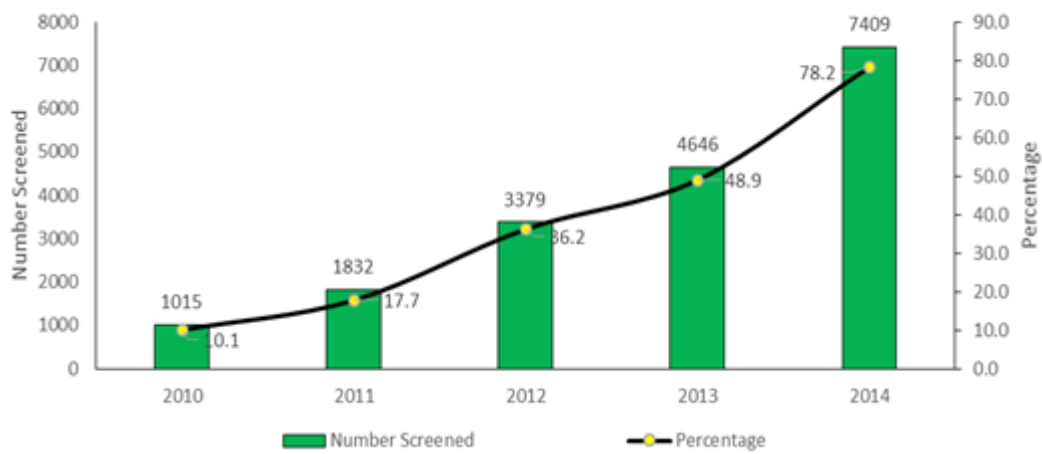


Figure 12: Number and Percentage of TB HIV Screening

Treatment Outcome of Tuberculosis

Outcome data presented below were based on the information provided for cohort of patients of 2013.

Treatment Outcome of All Forms TB Cases

Total number of cases registered for treatment in 2013 was 9496. Out of this, outcome of 309(3.3%) cases were not evaluated and in this report, outcome was presented for the rest of the cases (Table 18).

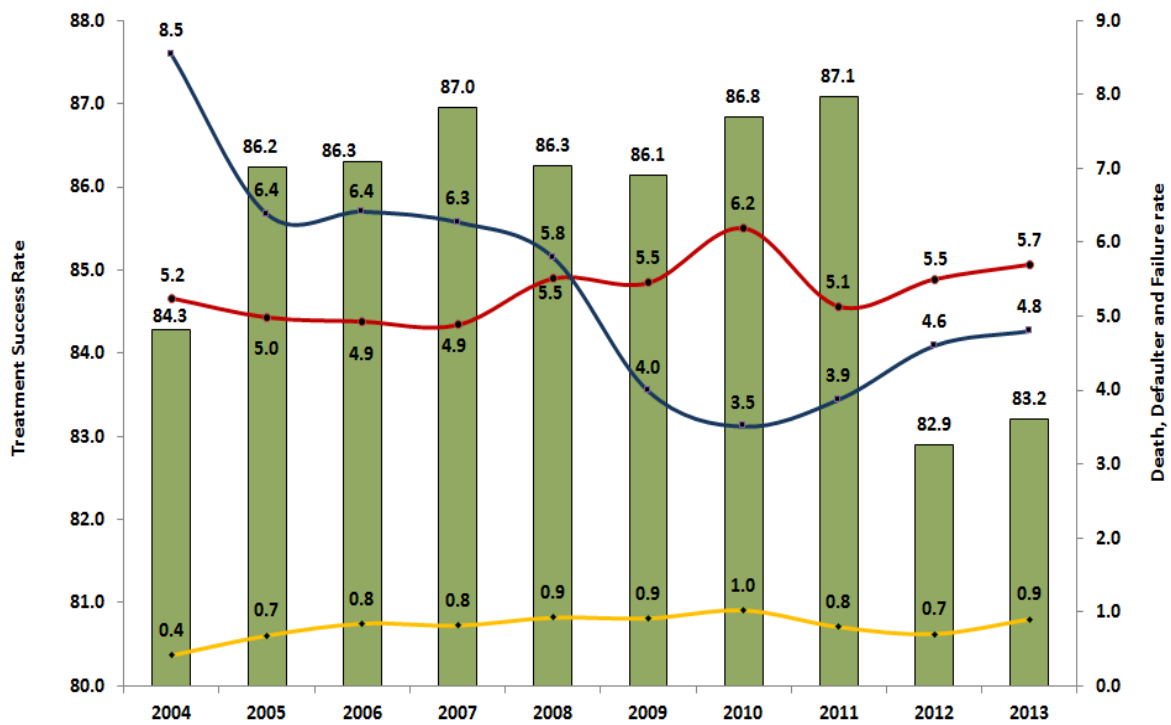


Figure 11: Treatment Outcome of All Forms of TB Cases from 2004-2013

➤ Treatment Success Rate

The cure rate among registered cases was 39.6% (3758 cases) and a further 43.6% (4144 cases) completed treatment, accounting for an overall treatment success rate of 83.2% (7902 cases). Though, this shows a slight increase in comparison to 2012 where the treatment success rate was 82.9 (7743 cases), this is well below the WHO target of more than 85% treatment success rate (Figure 11). There were 13 districts with treatment success rate below the global target of 85%. Out of them, Mullaitivu (69.2%), Nuwara-Eliya (70.5%), Puttalam (72.1%), Badulla (76.6%), Kurunegala (79.6%), Colombo (80.6%), Kandy (82.2%), Gampaha (82.5%), Jaffna (82.7) and Vauniya (83.1%) were below the national figure. Jaffna district showed the highest treatment completed rate (69.2%) and the lowest cure rate (13.5%) compared to the other districts (Figure 12).

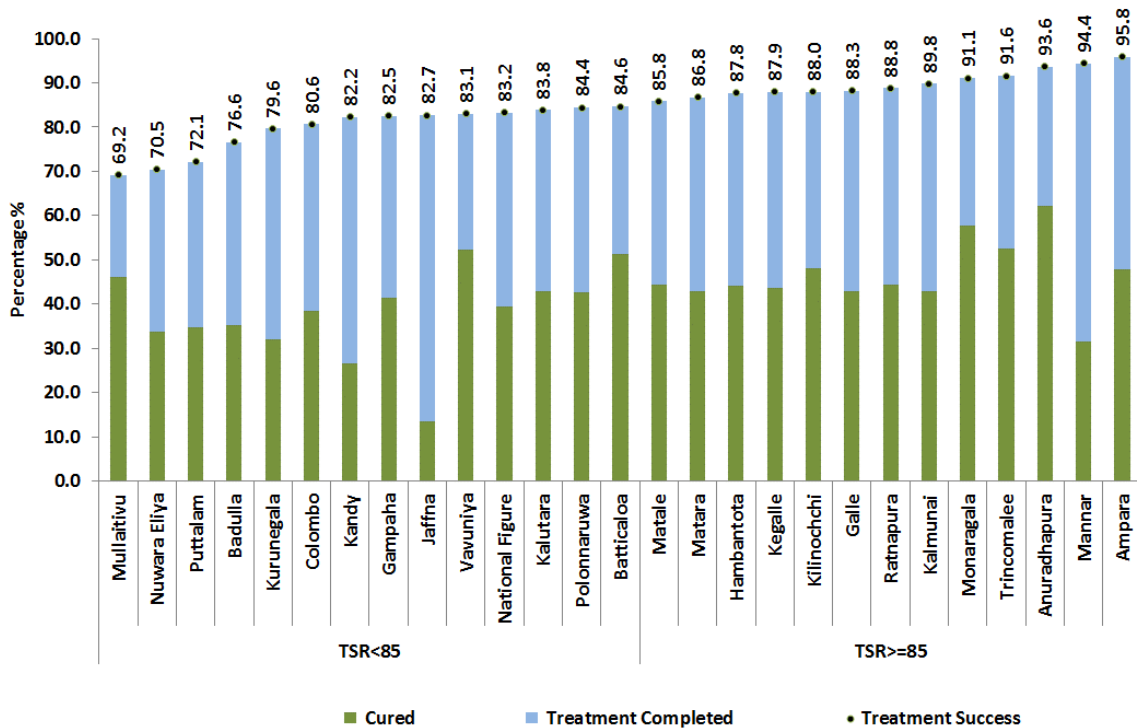


Figure 12: Treatment Success Rate of All Forms of TB According To Districts in 2013

➤ Treatment Failure Rate

The treatment failure rate was 0.9% in 2013. An increase of treatment failure rate have been observed when compared to 2012 in contrast to the slightly decreasing trend observed since 2009. Ampara district accounted for the highest failure rate (4.2%). Nuwara-Eliya (3.4%) and Baticaloa (2.6%) also accounted for the high failure rates (Table 18).

➤ Lost to Follow Up Rate

The Lost to Follow Up rate was 4.8% in Sri Lanka in 2013 and there was a slight increase (4.6%) when compared year 2012. The highest Lost to Follow Up rate was reported in Colombo (8.2%). Gampaha (8.1%), Mullathive (7.7%), Jaffna (6.0%), Kaluthara (5.4%) and Nuwara-Eliya (5.3%) also accounted for high Lost to Follow Up rates (Table 18).

➤ Death Rate

There were 542 (5.7%) deaths among the cohort of TB patients registered in year 2013. The highest number of deaths were reported from Colombo district (134, 5.8%). More than forty deaths were reported in Kandy (42, 5.8%), Kalutara (41, 6%), Gampaha (41, 4%) districts. Though number of deaths were very low, the highest death rate was reported from Mullathive District (4, 15.4%). Nineteen districts showed the death rate above the 5% (Table 18).

In depth analysis of deaths

158 deaths occurred among the above cohort were further analyzed and reported to the central unit of the NPTCCD by TB 17. Out of this, 62 deaths were confirmed as not due to TB and immediate or underline cause of death was established as TB for 69 cases. Cause of death was not mentioned in 16 cases.

Treatment Outcome of New PTB Cases

➤ Treatment Success Rate

In 2013, 6304 new PTB cases were registered for treatment. Of these cases, 161(2.6%) were in the category of “not been evaluated”. The cure rate among registered cases was 55.6% (3507 cases) and a further 1835(29.1%) completed treatment, giving an overall treatment success rate of 84.7% (5342). The lowest treatment success rate was shown in Nuwara-Eliya district (68.9%).Colombo, Gampaha, Kandy, Nuwara-Eliya, Mullathive, Badulla and Puttalam districts were below the global target 85% of TSR (Table 20).

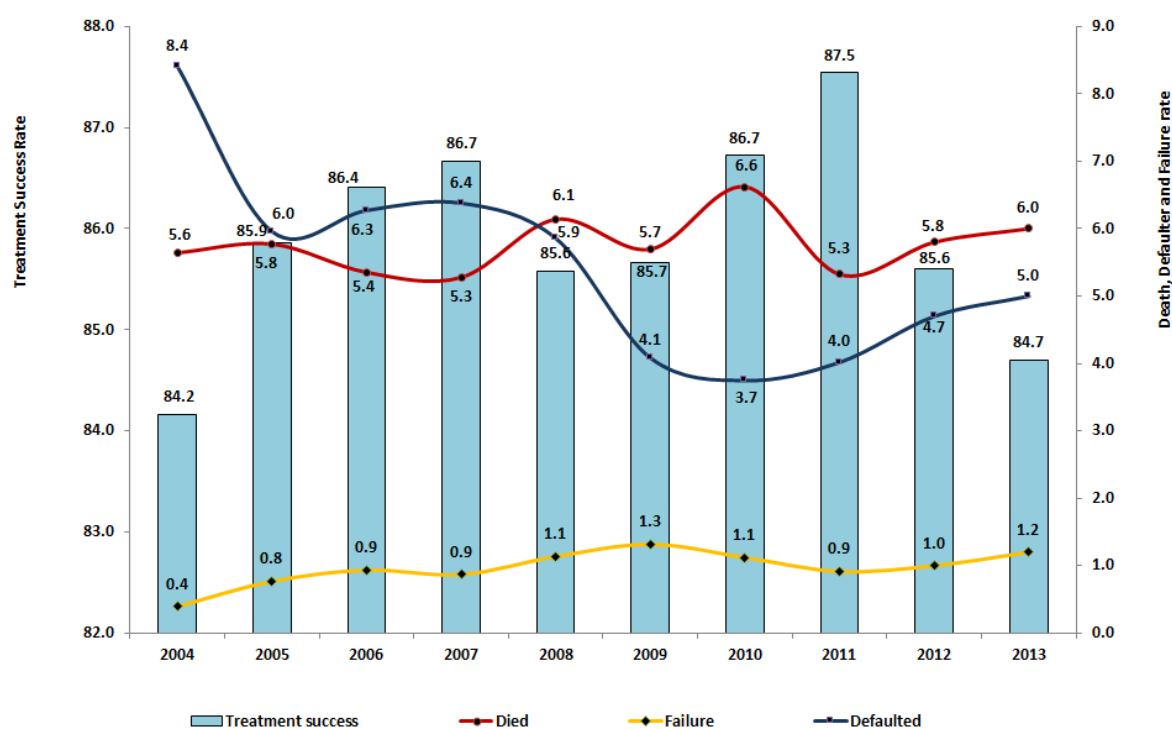


Figure 13: Treatment Outcome of New Pulmonary TB Cases from 2004-2013

➤ Treatment Failure Rate

Treatment failure rate among all new cases was 1.2%. A gradual increasing trend of treatment failure rate have been observed since 2011. The highest rate (5.7% of all new PTB cases) was reported from Ampara District (Table 20).

➤ Lost to Follow Up Rate

The Lost to Follow Up rate was 5 % among all new cases. The highest Lost to Follow Up rate was reported in Colombo (9.4%). Gampaha (8.7%), Mullathive (6.3%), Jaffna (5.8%), Kandy (7.1%), Kaluthara (5.6%) and Nuwara-Eliya (5.6%) also accounted for high Lost to Follow Up rates which were above the global target of 5% (Table 20).

➤ Death Rate

The death rate was 6% among all new PTB cases and the highest death rate was in Mullathive District 18.8% (13).

Puttalam (9.8%), Kilinochchi (9.4%) , Kalmunai (9%) and Matale (8.7%) districts also showed higher death rates (Table 20).

Treatment Outcome of New PTB Smear Positive Cases

➤ Sputum Conversion Rate

Sputum conversion rate at the end of intensive phase for Sri Lanka was 84.9% in 2014 and varied from lowest of 60.4% (Nuwara-Eliya) to highest of 95.5% (Batticaloa) (Figure 14).

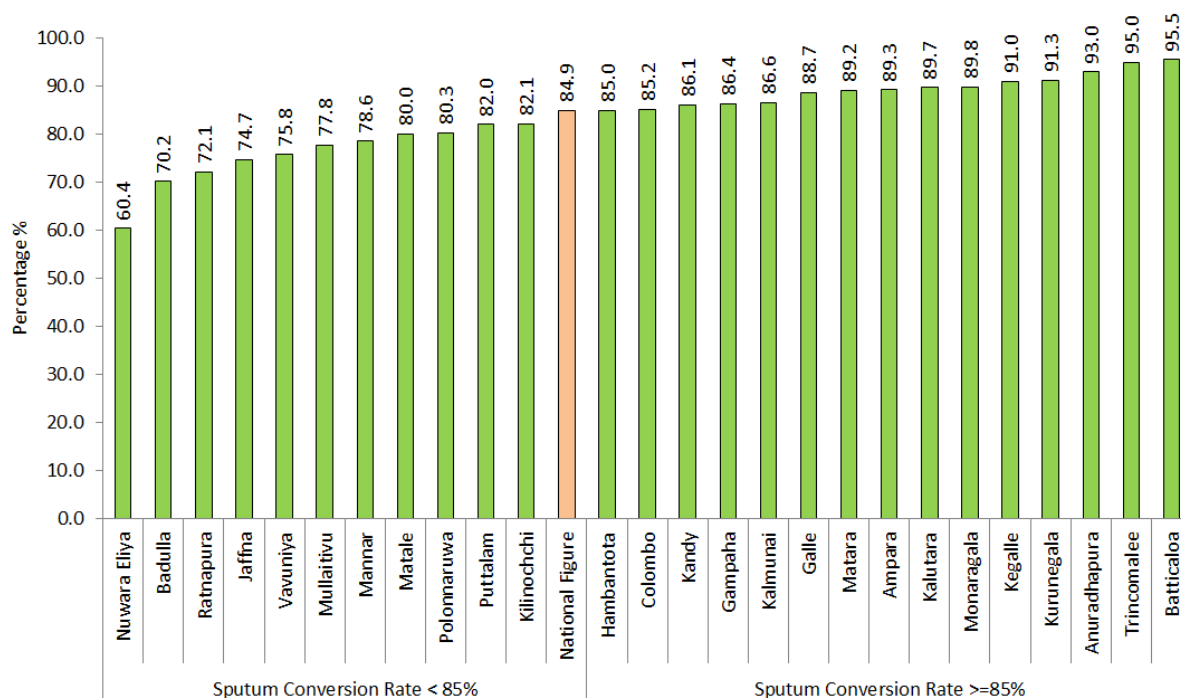


Figure 14: Sputum Conversion Percentage of New Smear-Positive Cases by District in 2014

➤ Treatment Success Rate

In 2013, 4423 new smear positive cases were registered for treatment. Of these cases, 85 (1.9 %) were in the category of not been evaluated. The cure rate among registered cases was 79.3 % (3507) and a further 5.9%(263) completed treatment, giving an overall treatment success rate of 85.2% (3770). The lowest treatment success rate(70.5%) was shown in Nuwara-Eliya district. Colombo, Gampaha, Kandy, Jaffna, Puttalam , Polonnaruwa and Badulla districts were below the global target (85% of TSR). Kilinochchi district (95.7%) showed the highest rate. Treatment success of more than 85% was observed in 18 districts (Figure 15).

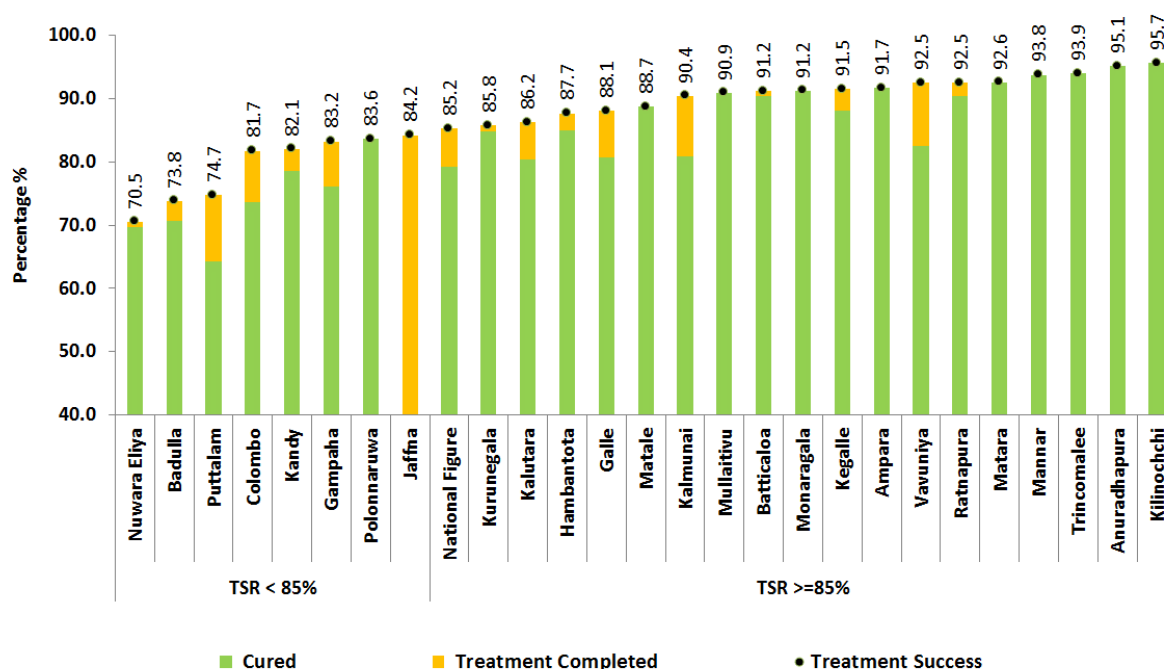


Figure 15: Treatment Success Rates of New Smear Positive Cases by Districts in 2013

➤ Treatment Failure Rate

The failure rate among new sputum smear positive cases was 1.5% in 2013. Five districts had not reported any treatment failures in 2013. The highest failure rate was 8.3%(2) which was reported from Ampara district (Table 21).

➤ Lost to Follow Up Rate

The Lost to Follow Up rate among new sputum smear positive cases was 5.4%(240) in 2013. The highest Lost to Follow Up rate was reported in Colombo district. Higher Lost to Follow Up rates were reported from Gampaha [8.9%] Colombo (8.3%), Jaffna [7.4%] and Puttalam [6.3%] while ten districts reported zero lost to follow up rates (Table 21).

➤ Death Rate

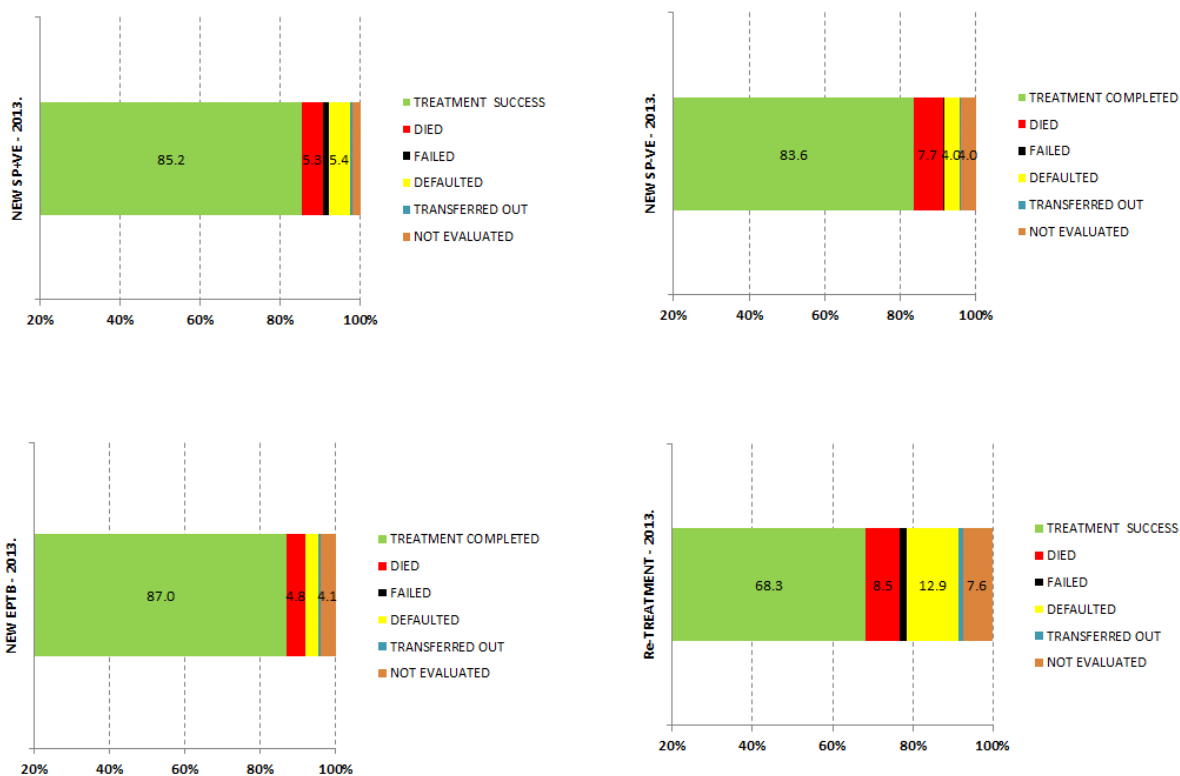
The death rate (5.3%,236 cases) in 2013 was almost the same when compared with 2012 (5.5%). The highest death rate was reported from Kalmunai (9.6%,7 cases). Mullathive

(9.1%,1case) Monaragala (8.8%,5 cases) and Matale (8.5%, 6 cases) also account for higher death rates (Table 21).

Treatment Outcome of Re-Treatment Patients

In 2013, of the 410 registered retreatment cases, only 247 cases were cured while another 33 cases had completed treatment giving a treatment success rate of 68.3%. The low treatment success rate in this group was mainly due to the high lost to follow up rate of 12.9% (53 cases) and high death rate of 8.5% (35 cases). In addition, there were 7(1.7%) treatment failures among retreatment cases in 2013. For another 31 (7.6%) cases out come was not evaluated (Table24).

Figure 16: Treatment Outcome Summary of TB Patients (New Smear Positive, New Smear Negative New EPTB and Re-Treatment) in 2013



DOTS Coverage

Population coverage of DOTS in the country is 100% since 2010 (Figure 17).

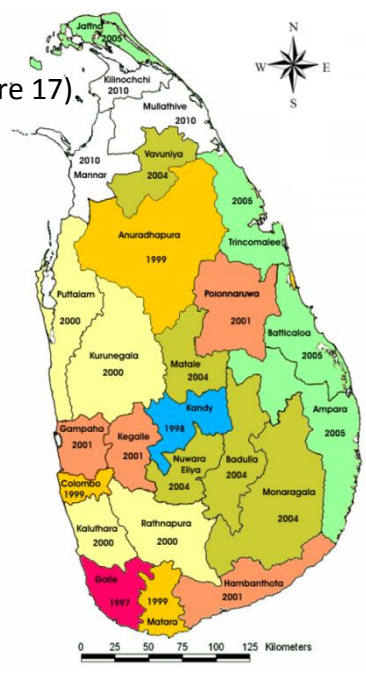
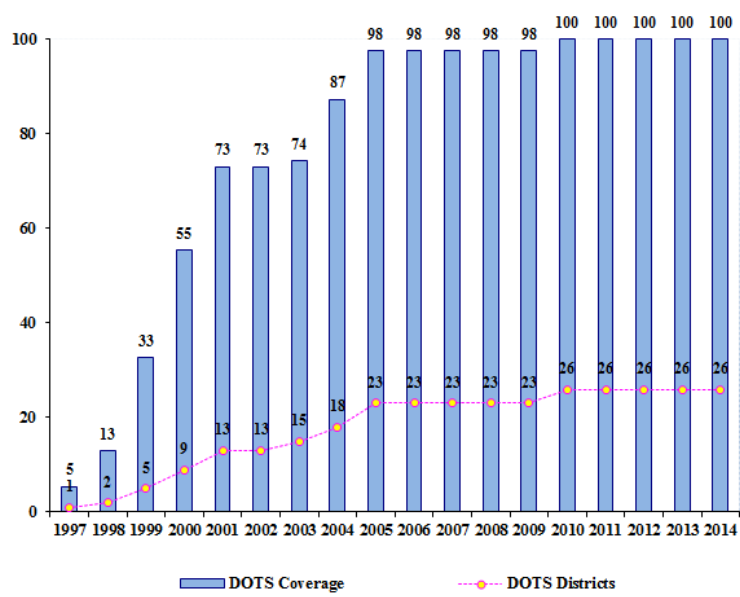


Figure 17: DOTS Coverage from 1997-2014 with Map of Year Achieved

PART II

Activity Report

Several important activities were carried out in 2014 in view of improving the quality of services provided by the NPTCCD

- Epidemiological Review

Epidemiological Review which was started in December 2013 was completed in 2014. This review was conducted by a local consultant and the main aims of the review were to identify predetermining factors for sudden drop of cases of TB in 2012.

- Joint Monitoring Mission (JMM)

A joint monitoring mission (JMM) comprised of experts from World Health Organization, South East Asian Regional Office of WHO, The Union, Green Light Committee, Global Drug Facility and GFATM was held in mid-2014 to evaluate the TB control programme of the country. The team visited Colombo, Kandy and Jaffna Districts and carried out a comprehensive review of all the aspects of TB Control.

- Revision of National Strategic Plan for 2015- 2020

The NPTCCD has revised the existing National Strategic Plan for TB Control for the period of 2015- 2020 with technical assistance of an external consultant in order to implement the recommendations of JMM and to be in par with WHO new post 2015 strategies for TB Control.

- Grant making activities for GFATM New Funding Model

The NPTCCD has successfully submitted the concept note to the GFATM which was a requirement for new funding model of the GFATM.

In addition, following activities were carried out during the year 2014.

- The NPTCCD has taken further steps to strengthen case detection by carrying out active screening among high risk groups for TB such as prison inmates, drug addicts, estate population.
- The diagnostic facilities were further expanded by initiation of construction of culture laboratories in TH Karapitiya and in Jaffna.

- The main construction work on BSL laboratory was completed in 2014
- External Quality Assurance of microscopy centers and DCC laboratories were further continued.
- Uninterrupted supply of quality assured anti TB drugs were ensured through procurement of Fixed Dose combination of Anti TB drugs from Global Drug Facility The Second Line Drugs were procured through the GDF/GLC mechanism.
- Drug stores of 10 district chest clinics were refurbished.
- NPTCCD conducted training programmes for DTCOs medical officers, nurses and other health workers utilizing both government and donor funds.
- The key staff of the NPTCCD attended several International meetings and conferences. Several Medical Officers and other staff participated in international training programs and workshops.
- Monitoring and evaluation of the TB control activities were further strengthened
 - *Bi-monthly DTCO reviews were conducted regularly at the central level to monitor and evaluate district chest clinic activities.*
 - *Provincial/districts reviews were conducted annually with a large participation of the officers of Government and Private health sector, NGOs, other government organizations in order to monitor the activities carried out by district staff and to strengthen the collaboration between different stake holders functioning at district level.*
 - *A regular supervisory visits were conducted by the team from central unit of the NPTCCD and NTRL monitor the progress of TB control activities and to identify the issues and constraints for provision of diagnostic, curative and preventive care. In addition, Chief pharmacist of the central drug stores carried out regular visits to chest clinic drug stores and provide guidance for drug and stores management.*
- Word TB day was commemorated on 24th March 2014 in Colombo under the theme of “4000 undetected, A TB Test, Treatment and cure for all” with the participation of large number of different stakeholders.
- Word Asthma Day was celebrated in May 2014 with collaboration of College of Pulmonologists of Sri Lanka and a website “Asthma Podththo was Launched on the same day.

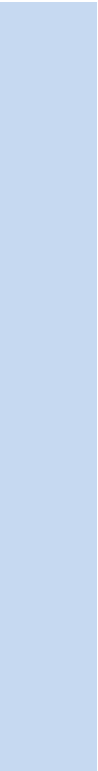
Major Challenges

The following factors were identified as major challenges.

1. Maintaining adequate number of human resources in the face of high turnover of trained staff
2. Reaching the unreached population groups such as population groups with limited access to services i.e urban poor, prisoners, estate workers, drug addicts
3. Provision of services to migrants who come for temporary employment and returnees from India
4. Strengthening early detection of TB cases
5. Reduction of TB deaths
6. Overcoming the TB-related stigma
7. Provision of social benefits and nutritional support for TB patients and their families
8. Financial sustainability of the National Tuberculosis Programme

PART III

Administration Report



OPD Attendance and Ward Admissions

During the year 2014, 192,537 new patients were registered at District Chest Clinics. Out of these patients, 79,049(41.1%) were self-referrals. Others included referrals from general health institutions or private practitioners 43,854(22.8%), contacts of TB patients 10,075(5.2%) and persons came for medical examinations 59,559 (30.9%). Thirteen chest wards situated in different types of hospitals in the country provide inward care for TB

Table 3: Utilization of TB/Respiratory Curative Care Facilities in 2014

| Health Facility | Total OPD Attendance (First Visits) | No of beds | Inward patients | | | |
|----------------------|-------------------------------------|------------|-----------------|------------|-------------|-------------|
| | | | TB | | Non TB | |
| | | | Male | Female | Male | Female |
| Chest Clinics | 192,537 | | | | | |
| Chest Wards | | | | | | |
| PGH Badulla | | 37 | 135 | 33 | 738 | 387 |
| TH Batticaloa | | 15 | 113 | 85 | 45 | 31 |
| BH Udugama | | 22 | 43 | 5 | 0 | 0 |
| DH Kopay | | 20 | 385 | 70 | 0 | 0 |
| DGH Kalutara | | 60 | 262 | 115 | 711 | 499 |
| DH Kandy | | 0 | 152 | 41 | 978 | 358 |
| DGH Matale | | 41 | 39 | 3 | 84 | 3 |
| BH Puttalam | | 28 | 92 | 37 | 0 | 0 |
| DH Eheliyagoda | | 65 | 0 | 0 | 0 | 0 |
| BH Cheddikkulam | | 153 | 38 | 18 | 2241 | 2226 |
| TH Anuradhapura | | 33 | 116 | 28 | 321 | 236 |
| Total | | 474 | 1375 | 435 | 5118 | 3740 |

Laboratory Services

➤ Sputum Smear Microscopy

Sputum smear examinations are done for diagnosis of TB and for monitoring of treatment. The patients having symptoms suggestive for TB, attending to the healthcare facilities are screened for TB by sputum examinations. During the period of treatment, all pulmonary TB patients are monitored with sputum examinations at regular and specified intervals.

➤ Sputum Culture for AFB

TB culture and DST facilities are available only at the National Reference Laboratory at Welisara. Regional Laboratory, Kandy and Ratnapura provide culture facilities only. Sputum cultures are being done for smear-negative PTB cases, all re-treatment cases before initiation of anti TB treatment and on presumptive MDR TB cases.

Table 4: Utilization of Diagnostic Care Facilities in 2014

| Institution | Sputum Microscopy | Sputum Culture Specimens | | Culture of Other specimens | |
|-----------------------|-------------------|--------------------------|---------|----------------------------|---------|
| | No. done | No. done | No. +ve | No. done | No. +ve |
| Microscopy Centres | 166,909 | | | | |
| DCC Laboratories | 220,889 | | | | |
| Culture Lab Kandy | 21,980 | 3033 | 207 | 1688 | 45 |
| Culture Lab Ratnapura | 8,948 | 576 | 73 | 33 | 4 |
| NTRL | | | | | |

➤ Testing By WHO recommended Rapid Diagnostics (Xpert MTB/RIF)

At present Xpert MTB/RIF (gene Xpert) facilities are available only at NTRL Walisara and in 2014, Xpert test was performed on 1713 specimens.

➤ External Quality Assurance of Sputum Microscopy

Quality assurance of sputum smear microscopy is an important component of the National TB Programme. Slides are being sent from all laboratories of District Chest Clinics & Chest Hospital, Welisara to NTRL for EQA. Sputum smears done in microscopy centers of general health institutions are being sent to laboratories at District Chest Clinics for EQA.

In 2014, 18,299 slides were checked for EQA and 10(1.01%) false positives and 22(0.13%) false negatives were identified (Table 5).

Table 5: EQA Results of Sputum Smear Microscopy in 2014

| Initial Reading | No. of slides checked | True | Low | High | Percentage of discordance |
|-----------------|-----------------------|-------|-----|------|---------------------------|
| +ve slides | 991 | 981 | 4 | 6 | 1.01 |
| -ve slides | 17308 | 17286 | 5 | 17 | 0.13 |

X-Ray Facilities

X-ray facilities are available only in some chest clinics namely: Colombo, Kurunegala, Kandy, Badulla, Kalutara, Ratnapura, Galle and Matara. The other clinics obtain this facility from the nearest hospital. Microfilms (70 mm) and standard size films are used in these clinics.

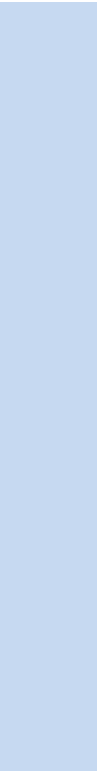
The number of X-ray films of the two types consumed in 2014 at the Chest Clinics were as follows.

| | |
|--------------------------------|-------------------------------|
| ✓ Number of Micro Films | : 182 (+ 50 Rolls) |
| ✓ Number of Large Films | : 93,198 |
| ✓ Total | : 93,380 (+ 50 Rolls) |

BCG Vaccination

The BCG vaccination is an essential component of Expanded Programme of Immunization in Sri Lanka. Accordingly, all newborns are being vaccinated within 24 hours of delivery. BCG vaccination will protect the child from two deadly forms of Tuberculosis in children, i.e.; TB Meningitis and Miliary TB. (Disseminated TB). In 2014, 99% of the all the new born babies has been vaccinated with BCG.

Chest clinics provide services whenever revaccination is necessary, in situations such as absence of BCG scar in children below 5 years of age. There were 1834 revaccination carried out in chest clinics in 2014.



Detailed Tables

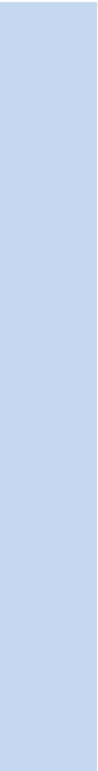


Table 6: Notification of New TB Cases in Sri Lanka from 2004 – 2014

| Year | PTB | | EPTB | | Total | | PTB Positive | |
|------|------|------|------|------|-------|------|--------------|------|
| | No | Rate | No | Rate | No | Rate | No | Rate |
| 2004 | 7164 | 36.7 | 1525 | 7.8 | 8689 | 44.6 | 4629 | 23.7 |
| 2005 | 7927 | 40.1 | 1521 | 7.7 | 9448 | 47.9 | 5241 | 26.5 |
| 2006 | 6771 | 33.9 | 1831 | 9.2 | 8602 | 43.0 | 4892 | 24.5 |
| 2007 | 6845 | 33.8 | 1969 | 9.7 | 8814 | 43.5 | 4805 | 23.7 |
| 2008 | 7041 | 34.3 | 2173 | 10.6 | 9214 | 44.9 | 4941 | 24.1 |
| 2009 | 7271 | 35.0 | 2372 | 11.4 | 9643 | 46.4 | 5186 | 25.0 |
| 2010 | 7055 | 33.5 | 2430 | 11.6 | 9485 | 45.1 | 4925 | 23.4 |
| 2011 | 6789 | 33.5 | 2420 | 11.9 | 9209 | 45.4 | 4465 | 22.0 |
| 2012 | 6169 | 30.4 | 2353 | 11.6 | 8522 | 42.1 | 4276 | 21.1 |
| 2013 | 6062 | 29.7 | 2166 | 10.6 | 8228 | 40.3 | 4342 | 21.3 |
| 2014 | 5818 | 28.3 | 2525 | 12.3 | 8343 | 40.6 | 4108 | 20.0 |

Source: Health 816 A

Table 7: Annual Mortality of All TB Cases from 2004-2013

| Year | Mortality | |
|------|-----------|-----------------------------|
| | Number | Rate per 100,000 population |
| 2004 | 422 | 2.2 |
| 2005 | 446 | 2.3 |
| 2006 | 347 | 1.7 |
| 2007 | 205 | 1.0 |
| 2008 | 355 | 1.7 |
| 2009 | 275 | 1.3 |
| 2010 | 395 | 1.9 |
| 2011 | 358 | 1.8 |
| 2012 | 203 | 1.0 |
| 2013 | 314 | 1.5 |
| 2014 | 309 | 1.5 |

Source: Health 816 A

Table 8: Distribution Rates of all TB cases by District of Residence in 2014

| District | Estimated Mid-Year Population | No. of Cases Detected | No. of Cases Per 100,000 Population |
|--------------|-------------------------------------|--------------------------|---|
| Colombo | 2,326,006 | 2342 | 100.7 |
| Gampaha | 2,341,690 | 1066 | 45.5 |
| Kalutara | 1,247,389 | 636 | 51.0 |
| Kandy | 1,387,766 | 676 | 48.7 |
| Matale | 490,754 | 172 | 35.0 |
| Nuwara Eliya | 707,295 | 250 | 35.3 |
| Galle | 1,072,154 | 473 | 44.1 |
| Matara | 818,922 | 280 | 34.2 |
| Hambantota | 610,660 | 139 | 22.8 |
| Jaffna | 591,691 | 256 | 43.3 |
| Kilinochchi | 114,484 | 56 | 48.9 |
| Mullaitivu | 93,257 | 36 | 38.6 |
| Vavuniya | 173,955 | 60 | 34.5 |
| Mannar | 100,463 | 50 | 49.8 |
| Batticaloa | 532,625 | 193 | 36.2 |
| Ampara | 658,598 | 251 | 38.1 |
| Trincomalee | 383,571 | 136 | 35.5 |
| Kurunegala | 1,640,390 | 568 | 34.6 |
| Puttalam | 769,838 | 182 | 23.6 |
| Anuradhapura | 879,159 | 238 | 27.1 |
| Polonnaruwa | 412,339 | 143 | 34.7 |
| Badulla | 818,102 | 234 | 28.6 |
| Monaragala | 458,509 | 91 | 19.8 |
| Ratnapura | 1,095,086 | 551 | 50.3 |
| Kegalle | 846,841 | 394 | 46.5 |
| Total | 20,571,542 | 9473 | 46.0 |

Table 9: All TB Case Detection by District of Registration in 2014

| District | New Cases | | | | Relapse | Others | | | | Treatment After Failure | Treatment After Default | Total |
|--------------|----------------|----------------|-------------|-------------|------------|-----------|------------|------------|------------|-------------------------|-------------------------|-------------|
| | PTB SS + ve | PTB SS - ve | EPTB | Total | | SS +ve | SS -ve | EPTB | Total | | | |
| Colombo | 1120 | 355 | 598 | 2073 | 76 | 40 | 37 | 62 | 139 | 7 | 47 | 2342 |
| Gampaha | 536 | 180 | 264 | 980 | 32 | 6 | 11 | 8 | 25 | 8 | 21 | 1066 |
| Kalutara | 292 | 100 | 201 | 593 | 21 | 0 | 3 | 11 | 14 | 1 | 7 | 636 |
| Kandy | 231 | 184 | 208 | 623 | 17 | 1 | 16 | 8 | 25 | 4 | 7 | 676 |
| Matale | 70 | 33 | 58 | 161 | 6 | 0 | 2 | 3 | 5 | 0 | 0 | 172 |
| Nuwara Eliya | 101 | 63 | 70 | 234 | 6 | 0 | 1 | 4 | 5 | 4 | 1 | 250 |
| Galle | 212 | 103 | 123 | 438 | 14 | 0 | 3 | 7 | 10 | 3 | 8 | 473 |
| Matara | 120 | 64 | 84 | 268 | 6 | 0 | 0 | 4 | 4 | 2 | 0 | 280 |
| Hambantota | 60 | 21 | 51 | 132 | 5 | 0 | 0 | 0 | 0 | 1 | 1 | 139 |
| Jaffna | 91 | 60 | 83 | 234 | 12 | 0 | 4 | 1 | 5 | 4 | 1 | 256 |
| Kilinochchi | 28 | 9 | 14 | 51 | 4 | 0 | 0 | 0 | 0 | 0 | 1 | 56 |
| Mullaitivu | 18 | 10 | 6 | 34 | 2 | 0 | 0 | 0 | 0 | 0 | 0 | 36 |
| Vavuniya | 33 | 11 | 13 | 57 | 2 | 0 | 0 | 0 | 0 | 1 | 0 | 60 |
| Mannar | 14 | 12 | 18 | 44 | 1 | 0 | 2 | 3 | 5 | 0 | 0 | 50 |
| Batticaloa | 89 | 38 | 50 | 177 | 8 | 1 | 3 | 2 | 6 | 2 | 0 | 193 |
| Ampara | 28 | 20 | 22 | 70 | 4 | 0 | 0 | 0 | 0 | 0 | 0 | 74 |
| Kalmunai | 67 | 69 | 29 | 165 | 8 | 1 | 2 | 1 | 4 | 0 | 0 | 177 |
| Trincomalee | 60 | 27 | 40 | 127 | 3 | 0 | 2 | 0 | 2 | 3 | 1 | 136 |
| Kurunegala | 218 | 145 | 120 | 483 | 13 | 2 | 41 | 25 | 68 | 3 | 1 | 568 |
| Puttalam | 89 | 18 | 65 | 172 | 8 | 0 | 0 | 0 | 0 | 2 | 0 | 182 |
| Anuradhapura | 142 | 26 | 58 | 226 | 8 | 0 | 1 | 1 | 2 | 2 | 0 | 238 |
| Polonnaruwa | 71 | 33 | 33 | 137 | 2 | 0 | 0 | 0 | 0 | 4 | 0 | 143 |
| Badulla | 114 | 41 | 64 | 219 | 6 | 0 | 1 | 1 | 2 | 7 | 0 | 234 |
| Monaragala | 49 | 16 | 24 | 89 | 2 | 0 | 0 | 0 | 0 | 0 | 0 | 91 |
| Ratnapura | 251 | 106 | 172 | 529 | 8 | 1 | 2 | 0 | 3 | 3 | 8 | 551 |
| Kegalle | 189 | 87 | 100 | 376 | 14 | 0 | 0 | 1 | 1 | 1 | 2 | 394 |
| Total | 4293 | 1831 | 2568 | 8692 | 288 | 52 | 131 | 142 | 325 | 62 | 106 | 9473 |

Table 10: Distribution of New Cases of TB by Province in 2014

| Province | Number of Patients | | | | | | | | | | | |
|---------------|--------------------|------|----------------|------|------|------|---------|------|--------------|------|--------|------|
| | Smear Positive | Rate | Smear Negative | Rate | EPTB | Rate | All New | Rate | Re-treatment | Rate | All TB | Rate |
| Western | 1948 | 32.9 | 635 | 10.7 | 1063 | 18.0 | 3646 | 61.6 | 220 | 3.7 | 4044 | 68.4 |
| Central | 402 | 15.5 | 280 | 10.8 | 336 | 13.0 | 1018 | 39.4 | 45 | 1.7 | 1098 | 42.5 |
| Southern | 392 | 15.7 | 188 | 7.5 | 258 | 10.3 | 838 | 33.5 | 40 | 1.6 | 892 | 35.7 |
| Northern | 184 | 17.1 | 102 | 9.5 | 134 | 12.5 | 420 | 39.1 | 28 | 2.6 | 458 | 42.7 |
| Eastern | 244 | 15.5 | 154 | 9.8 | 141 | 9.0 | 539 | 34.2 | 29 | 1.8 | 580 | 36.8 |
| North Western | 307 | 12.7 | 163 | 6.8 | 185 | 7.7 | 655 | 27.2 | 27 | 1.1 | 750 | 31.1 |
| North Central | 213 | 16.5 | 59 | 4.6 | 91 | 7.0 | 363 | 28.1 | 16 | 1.2 | 381 | 29.5 |
| Uva | 163 | 12.8 | 57 | 4.5 | 88 | 6.9 | 308 | 24.1 | 15 | 1.2 | 325 | 25.5 |
| Sabaragamuwa | 440 | 22.7 | 193 | 9.9 | 272 | 14.0 | 905 | 46.6 | 36 | 1.9 | 945 | 48.7 |
| Total | 4293 | 20.9 | 1831 | 8.9 | 2568 | 12.5 | 8692 | 42.3 | 456 | 2.2 | 9473 | 46.0 |

Table 11: Distribution of new cases of TB by Age and Type in 2014

| Age Group | Number of Patients | | | | | | | |
|--------------|--------------------|-------------|----------------|------------|-------------|-------------|-------------|-------------|
| | Smear Positive | Rate | Smear Negative | Rate | EPTB | Rate | All New | Rate |
| 0 - 14 | 39 | 0.7 | 95 | 1.7 | 179 | 3.3 | 313 | 5.7 |
| 15 - 24 | 450 | 11.8 | 131 | 3.4 | 344 | 9.0 | 925 | 24.2 |
| 25 - 34 | 585 | 17.4 | 193 | 5.7 | 470 | 14.0 | 1248 | 37.1 |
| 35 - 44 | 687 | 25.8 | 175 | 6.6 | 428 | 16.1 | 1290 | 48.5 |
| 45 - 54 | 1007 | 61.6 | 346 | 21.2 | 425 | 26.0 | 1778 | 108.7 |
| 55 - 64 | 870 | 81.2 | 408 | 38.1 | 420 | 39.2 | 1698 | 158.4 |
| 65 + | 655 | 25.7 | 483 | 18.9 | 302 | 11.8 | 1440 | 56.4 |
| Total | 4293 | 20.9 | 1831 | 8.9 | 2568 | 12.5 | 8692 | 42.3 |

Table 12: Distribution of New Cases of TB by Age and Sex in 2014

| Age Group | Male | | | Female | | | Total | | |
|----------------|-------------------------------|-------------|-------------|-------------------------------|-------------|-------------|-------------------------------|-------------|-------------|
| | Estimated Mid-Year Population | No | Rate | Estimated Mid-Year Population | No | Rate | Estimated Mid-Year Population | No | Rate |
| 0 - 14 | 2,799,787 | 154 | 5.5 | 2,653,729 | 159 | 6.0 | 5,453,516 | 313 | 5.7 |
| 15 - 24 | 1,689,373 | 440 | 26.0 | 2,139,440 | 485 | 22.7 | 3,828,813 | 925 | 24.2 |
| 25 - 34 | 1,690,981 | 771 | 45.6 | 1,676,581 | 477 | 28.5 | 3,367,562 | 1248 | 37.1 |
| 35 - 44 | 1,098,520 | 868 | 79.0 | 1,563,437 | 422 | 27.0 | 2,661,957 | 1290 | 48.5 |
| 45 - 54 | 833,148 | 1253 | 150.4 | 802,290 | 525 | 65.4 | 1,635,438 | 1778 | 108.7 |
| 55 - 64 | 569,832 | 1184 | 207.8 | 501,946 | 514 | 102.4 | 1,071,778 | 1698 | 158.4 |
| 65 + | 1,300,121 | 986 | 75.8 | 1,252,357 | 454 | 36.3 | 2,552,478 | 1440 | 56.4 |
| Total | 9,981,762 | 5656 | 56.7 | 10,589,780 | 3036 | 28.7 | 20,571,542 | 8692 | 42.3 |

Table 13: Age and Sex Distribution of All New TB Cases by District in 2014

| District | 0-5 | | 5-14 | | 15-24 | | 25-34 | | 35-44 | | 45-54 | | 55-64 | | 65-74 | | >75 | | Total | | Total |
|--------------|-----------|-----------|-----------|------------|------------|------------|------------|------------|------------|------------|-------------|------------|-------------|------------|------------|------------|------------|-----------|-------------|-------------|-------------|
| | M | F | M | F | M | F | M | F | M | F | M | F | M | F | M | F | M | F | M | F | |
| Colombo | 25 | 32 | 21 | 20 | 110 | 127 | 179 | 113 | 206 | 99 | 334 | 123 | 276 | 116 | 143 | 74 | 49 | 26 | 1343 | 730 | 2073 |
| Gampaha | 2 | 4 | 8 | 7 | 40 | 50 | 95 | 54 | 105 | 42 | 165 | 57 | 132 | 55 | 94 | 28 | 31 | 11 | 672 | 308 | 980 |
| Kalutara | 3 | 2 | 5 | 6 | 27 | 30 | 44 | 35 | 63 | 28 | 76 | 31 | 85 | 40 | 56 | 38 | 14 | 10 | 373 | 220 | 593 |
| Kandy | 12 | 7 | 11 | 9 | 37 | 39 | 45 | 29 | 63 | 27 | 69 | 39 | 90 | 44 | 47 | 29 | 16 | 10 | 390 | 233 | 623 |
| Matale | 2 | 0 | 2 | 2 | 13 | 4 | 17 | 12 | 13 | 6 | 18 | 11 | 31 | 9 | 12 | 3 | 5 | 1 | 113 | 48 | 161 |
| Nuwara Eliya | 4 | 2 | 4 | 4 | 23 | 18 | 26 | 22 | 13 | 11 | 19 | 18 | 28 | 15 | 13 | 11 | 2 | 1 | 132 | 102 | 234 |
| Galle | 1 | 0 | 1 | 3 | 21 | 20 | 51 | 22 | 45 | 21 | 74 | 23 | 56 | 19 | 48 | 11 | 17 | 5 | 314 | 124 | 438 |
| Matara | 0 | 1 | 1 | 0 | 7 | 9 | 20 | 14 | 21 | 10 | 34 | 12 | 54 | 16 | 30 | 10 | 22 | 7 | 189 | 79 | 268 |
| Hambantota | 0 | 0 | 1 | 2 | 6 | 5 | 13 | 6 | 12 | 8 | 19 | 12 | 10 | 14 | 14 | 4 | 5 | 1 | 80 | 52 | 132 |
| Jaffna | 0 | 0 | 5 | 1 | 8 | 10 | 19 | 9 | 23 | 14 | 31 | 20 | 33 | 19 | 21 | 13 | 7 | 1 | 147 | 87 | 234 |
| Kilinochchi | 0 | 0 | 0 | 0 | 2 | 3 | 3 | 3 | 1 | 2 | 9 | 2 | 9 | 4 | 8 | 5 | 0 | 0 | 32 | 19 | 51 |
| Mullaitivu | 0 | 1 | 0 | 1 | 2 | 1 | 2 | 1 | 2 | 2 | 3 | 4 | 7 | 1 | 2 | 5 | 0 | 0 | 18 | 16 | 34 |
| Vavuniya | 0 | 0 | 1 | 0 | 3 | 7 | 6 | 4 | 6 | 1 | 7 | 5 | 9 | 1 | 5 | 0 | 2 | 0 | 39 | 18 | 57 |
| Mannar | 0 | 0 | 1 | 0 | 2 | 3 | 6 | 3 | 3 | 2 | 3 | 7 | 3 | 5 | 6 | 0 | 0 | 0 | 24 | 20 | 44 |
| Batticaloa | 0 | 0 | 5 | 6 | 13 | 16 | 16 | 2 | 14 | 12 | 18 | 9 | 23 | 7 | 14 | 12 | 7 | 3 | 110 | 67 | 177 |
| Ampara | 0 | 0 | 2 | 1 | 4 | 3 | 2 | 1 | 8 | 1 | 9 | 5 | 11 | 2 | 9 | 4 | 8 | 0 | 53 | 17 | 70 |
| Kalmunai | 1 | 0 | 1 | 3 | 10 | 4 | 12 | 5 | 17 | 13 | 27 | 12 | 24 | 7 | 15 | 8 | 6 | 0 | 113 | 52 | 165 |
| Trincomalee | 0 | 1 | 1 | 1 | 6 | 4 | 9 | 8 | 14 | 11 | 16 | 7 | 19 | 12 | 6 | 7 | 3 | 2 | 74 | 53 | 127 |
| Kurunegala | 0 | 1 | 4 | 9 | 23 | 12 | 38 | 16 | 62 | 21 | 75 | 27 | 60 | 43 | 38 | 29 | 16 | 9 | 316 | 167 | 483 |
| Puttalam | 1 | 0 | 5 | 1 | 8 | 8 | 17 | 13 | 14 | 5 | 32 | 12 | 24 | 5 | 13 | 6 | 6 | 2 | 120 | 52 | 172 |
| Anuradhapura | 1 | 3 | 4 | 6 | 11 | 14 | 20 | 13 | 22 | 4 | 50 | 14 | 32 | 9 | 15 | 6 | 1 | 1 | 156 | 70 | 226 |
| Polonnaruwa | 0 | 2 | 1 | 1 | 5 | 3 | 17 | 7 | 20 | 7 | 25 | 8 | 16 | 6 | 14 | 1 | 3 | 1 | 101 | 36 | 137 |
| Badulla | 2 | 1 | 1 | 2 | 14 | 18 | 21 | 18 | 22 | 11 | 33 | 11 | 34 | 11 | 11 | 4 | 4 | 1 | 142 | 77 | 219 |
| Monaragala | 1 | 0 | 1 | 2 | 3 | 9 | 17 | 5 | 8 | 4 | 8 | 5 | 13 | 2 | 7 | 0 | 4 | 0 | 62 | 27 | 89 |
| Ratnapura | 1 | 1 | 7 | 9 | 25 | 39 | 47 | 42 | 59 | 37 | 62 | 29 | 49 | 21 | 49 | 20 | 27 | 5 | 326 | 203 | 529 |
| Kegalle | 3 | 1 | 2 | 4 | 17 | 29 | 29 | 20 | 32 | 23 | 37 | 22 | 56 | 31 | 37 | 28 | 4 | 1 | 217 | 159 | 376 |
| Total | 59 | 59 | 95 | 100 | 440 | 485 | 771 | 477 | 868 | 422 | 1253 | 525 | 1184 | 514 | 727 | 356 | 259 | 98 | 5656 | 3036 | 8692 |

Table 14: Age and Sex Distribution of Smear Positive New TB Cases by District in 2014

| District | 0-5 | | 5-14 | | 15-24 | | 25-34 | | 35-44 | | 45-54 | | 55-64 | | 65-74 | | >75 | | Total | | Total |
|--------------|-----|---|------|----|-------|-----|-------|-----|-------|-----|-------|-----|-------|-----|-------|-----|-----|----|-------|------|-------|
| | M | F | M | F | M | F | M | F | M | F | M | F | M | F | M | F | M | F | M | F | |
| Colombo | 0 | 0 | 2 | 4 | 53 | 56 | 96 | 45 | 131 | 50 | 241 | 62 | 186 | 56 | 78 | 33 | 15 | 12 | 802 | 318 | 1120 |
| Gampaha | 0 | 0 | 0 | 0 | 16 | 29 | 54 | 25 | 65 | 17 | 111 | 27 | 88 | 21 | 48 | 14 | 13 | 8 | 395 | 141 | 536 |
| Kalutara | 0 | 0 | 0 | 2 | 13 | 12 | 24 | 16 | 35 | 12 | 47 | 7 | 51 | 14 | 32 | 15 | 8 | 4 | 210 | 82 | 292 |
| Kandy | 0 | 0 | 1 | 0 | 18 | 18 | 18 | 9 | 32 | 5 | 38 | 11 | 43 | 13 | 17 | 3 | 4 | 1 | 171 | 60 | 231 |
| Matale | 0 | 0 | 1 | 0 | 4 | 1 | 6 | 3 | 10 | 1 | 11 | 6 | 13 | 3 | 7 | 1 | 3 | 0 | 55 | 15 | 70 |
| Nuwara Eliya | 0 | 0 | 0 | 2 | 13 | 11 | 10 | 13 | 8 | 4 | 6 | 7 | 12 | 3 | 4 | 5 | 2 | 1 | 55 | 46 | 101 |
| Galle | 0 | 0 | 0 | 1 | 9 | 12 | 25 | 11 | 25 | 8 | 45 | 6 | 24 | 9 | 22 | 5 | 7 | 3 | 157 | 55 | 212 |
| Matara | 0 | 0 | 1 | 0 | 3 | 6 | 11 | 3 | 10 | 7 | 18 | 6 | 24 | 6 | 11 | 5 | 5 | 4 | 83 | 37 | 120 |
| Hambantota | 0 | 0 | 0 | 0 | 2 | 3 | 8 | 1 | 7 | 1 | 8 | 5 | 5 | 4 | 9 | 2 | 4 | 1 | 43 | 17 | 60 |
| Jaffna | 0 | 0 | 0 | 0 | 4 | 1 | 8 | 1 | 13 | 5 | 14 | 9 | 17 | 6 | 6 | 4 | 2 | 1 | 64 | 27 | 91 |
| Kilinochchi | 0 | 0 | 0 | 0 | 1 | 0 | 1 | 2 | 1 | 1 | 5 | 2 | 6 | 2 | 5 | 2 | 0 | 0 | 19 | 9 | 28 |
| Mullaitivu | 0 | 1 | 0 | 1 | 1 | 1 | 1 | 0 | 2 | 1 | 1 | 1 | 5 | 0 | 2 | 1 | 0 | 0 | 12 | 6 | 18 |
| Vavuniya | 0 | 0 | 0 | 0 | 3 | 3 | 1 | 2 | 5 | 0 | 7 | 2 | 7 | 1 | 0 | 0 | 2 | 0 | 25 | 8 | 33 |
| Mannar | 0 | 0 | 0 | 0 | 1 | 0 | 4 | 1 | 2 | 1 | 2 | 0 | 0 | 1 | 2 | 0 | 0 | 0 | 11 | 3 | 14 |
| Batticaloa | 0 | 0 | 0 | 0 | 6 | 11 | 4 | 1 | 6 | 6 | 15 | 5 | 12 | 5 | 5 | 6 | 5 | 2 | 53 | 36 | 89 |
| Ampara | 0 | 0 | 0 | 0 | 3 | 1 | 0 | 1 | 5 | 0 | 4 | 2 | 4 | 1 | 4 | 1 | 2 | 0 | 22 | 6 | 28 |
| Kalmunai | 0 | 0 | 0 | 0 | 5 | 2 | 7 | 2 | 7 | 4 | 15 | 5 | 11 | 1 | 4 | 1 | 3 | 0 | 52 | 15 | 67 |
| Trincomalee | 0 | 0 | 0 | 0 | 2 | 1 | 3 | 2 | 5 | 4 | 12 | 2 | 13 | 5 | 3 | 6 | 1 | 1 | 39 | 21 | 60 |
| Kurunegala | 0 | 0 | 1 | 6 | 13 | 8 | 20 | 5 | 34 | 4 | 46 | 4 | 27 | 13 | 16 | 11 | 9 | 1 | 166 | 52 | 218 |
| Puttalam | 0 | 0 | 0 | 0 | 7 | 2 | 10 | 8 | 7 | 0 | 16 | 4 | 15 | 2 | 10 | 4 | 3 | 1 | 68 | 21 | 89 |
| Anuradhapura | 0 | 0 | 2 | 3 | 8 | 7 | 14 | 4 | 19 | 0 | 34 | 6 | 25 | 4 | 13 | 2 | 1 | 0 | 116 | 26 | 142 |
| Polonnaruwa | 0 | 0 | 1 | 0 | 3 | 2 | 8 | 3 | 13 | 1 | 15 | 5 | 8 | 2 | 6 | 1 | 2 | 1 | 56 | 15 | 71 |
| Badulla | 0 | 0 | 1 | 1 | 8 | 9 | 11 | 8 | 15 | 5 | 20 | 2 | 20 | 3 | 6 | 3 | 2 | 0 | 83 | 31 | 114 |
| Monaragala | 0 | 0 | 0 | 1 | 2 | 3 | 10 | 1 | 7 | 2 | 5 | 2 | 8 | 0 | 5 | 0 | 3 | 0 | 40 | 9 | 49 |
| Ratnapura | 0 | 0 | 0 | 5 | 9 | 16 | 23 | 17 | 37 | 12 | 40 | 7 | 22 | 12 | 24 | 12 | 14 | 1 | 169 | 82 | 251 |
| Kegalle | 0 | 0 | 0 | 2 | 8 | 20 | 15 | 9 | 22 | 13 | 27 | 9 | 27 | 10 | 14 | 10 | 3 | 0 | 116 | 73 | 189 |
| Total | 0 | 1 | 10 | 28 | 215 | 235 | 392 | 193 | 523 | 164 | 803 | 204 | 673 | 197 | 353 | 147 | 113 | 42 | 3082 | 1211 | 4293 |



Table 15: Age and Sex Distribution of Smear Negative New TB Cases by District in 2014

| District | 0-5 | | 5-14 | | 15-24 | | 25-34 | | 35-44 | | 45-54 | | 55-64 | | 65-74 | | >75 | | Total | | Total |
|--------------|-----|----|------|----|-------|----|-------|----|-------|----|-------|-----|-------|-----|-------|-----|-----|----|-------|-----|-------|
| | M | F | M | F | M | F | M | F | M | F | M | F | M | F | M | F | M | F | M | F | |
| Colombo | 9 | 8 | 4 | 5 | 14 | 25 | 20 | 21 | 21 | 7 | 48 | 15 | 48 | 19 | 45 | 18 | 22 | 6 | 231 | 124 | 355 |
| Gampaha | 1 | 0 | 2 | 2 | 5 | 5 | 11 | 8 | 13 | 3 | 27 | 13 | 21 | 13 | 33 | 9 | 12 | 2 | 125 | 55 | 180 |
| Kalutara | 2 | 0 | 1 | 2 | 3 | 2 | 4 | 3 | 2 | 3 | 9 | 8 | 15 | 9 | 15 | 14 | 5 | 3 | 56 | 44 | 100 |
| Kandy | 9 | 7 | 5 | 7 | 7 | 6 | 8 | 6 | 11 | 5 | 17 | 11 | 23 | 12 | 20 | 15 | 10 | 5 | 110 | 74 | 184 |
| Matale | 0 | 0 | 0 | 0 | 4 | 2 | 4 | 0 | 1 | 1 | 2 | 1 | 8 | 3 | 3 | 1 | 2 | 1 | 24 | 9 | 33 |
| Nuwara Eliya | 4 | 0 | 4 | 0 | 3 | 1 | 6 | 4 | 1 | 2 | 7 | 7 | 8 | 6 | 5 | 5 | 0 | 0 | 38 | 25 | 63 |
| Galle | 0 | 0 | 0 | 0 | 2 | 5 | 8 | 5 | 6 | 2 | 17 | 9 | 17 | 5 | 15 | 4 | 7 | 1 | 72 | 31 | 103 |
| Matara | 0 | 0 | 0 | 0 | 1 | 0 | 2 | 3 | 6 | 1 | 6 | 1 | 13 | 5 | 12 | 4 | 9 | 1 | 49 | 15 | 64 |
| Hambantota | 0 | 0 | 0 | 0 | 0 | 1 | 0 | 0 | 2 | 0 | 2 | 3 | 2 | 4 | 5 | 1 | 1 | 0 | 12 | 9 | 21 |
| Jaffna | 0 | 0 | 3 | 0 | 0 | 4 | 2 | 4 | 2 | 6 | 7 | 4 | 11 | 4 | 4 | 5 | 4 | 0 | 33 | 27 | 60 |
| Kilinochchi | 0 | 0 | 0 | 0 | 0 | 1 | 0 | 1 | 0 | 0 | 1 | 0 | 1 | 0 | 3 | 2 | 0 | 0 | 5 | 4 | 9 |
| Mullaitivu | 0 | 0 | 0 | 0 | 0 | 0 | 0 | 1 | 0 | 1 | 2 | 0 | 2 | 1 | 0 | 3 | 0 | 0 | 4 | 6 | 10 |
| Vavuniya | 0 | 0 | 0 | 0 | 0 | 0 | 4 | 1 | 0 | 0 | 0 | 1 | 1 | 0 | 4 | 0 | 0 | 0 | 9 | 2 | 11 |
| Mannar | 0 | 0 | 0 | 0 | 0 | 0 | 0 | 0 | 1 | 0 | 0 | 3 | 2 | 3 | 3 | 0 | 0 | 0 | 6 | 6 | 12 |
| Batticaloa | 0 | 0 | 1 | 1 | 1 | 0 | 4 | 1 | 3 | 1 | 2 | 1 | 8 | 2 | 6 | 5 | 1 | 1 | 26 | 12 | 38 |
| Ampara | 0 | 0 | 0 | 0 | 0 | 0 | 1 | 0 | 1 | 0 | 1 | 0 | 6 | 1 | 5 | 2 | 3 | 0 | 17 | 3 | 20 |
| Kalmunai | 0 | 0 | 0 | 0 | 3 | 1 | 4 | 1 | 3 | 6 | 10 | 4 | 12 | 6 | 9 | 7 | 3 | 0 | 44 | 25 | 69 |
| Trincomalee | 0 | 1 | 0 | 0 | 1 | 0 | 2 | 2 | 4 | 0 | 3 | 3 | 5 | 3 | 2 | 0 | 1 | 0 | 18 | 9 | 27 |
| Kurunegala | 0 | 0 | 0 | 0 | 2 | 0 | 8 | 3 | 11 | 10 | 23 | 12 | 20 | 20 | 16 | 8 | 5 | 7 | 85 | 60 | 145 |
| Puttalam | 0 | 0 | 0 | 0 | 0 | 2 | 1 | 0 | 0 | 1 | 4 | 2 | 3 | 1 | 2 | 1 | 0 | 1 | 10 | 8 | 18 |
| Anuradhapura | 0 | 0 | 0 | 2 | 0 | 1 | 1 | 2 | 1 | 2 | 10 | 3 | 1 | 1 | 0 | 2 | 0 | 0 | 13 | 13 | 26 |
| Polonnaruwa | 0 | 0 | 0 | 1 | 0 | 1 | 3 | 0 | 3 | 4 | 5 | 0 | 6 | 2 | 7 | 0 | 1 | 0 | 25 | 8 | 33 |
| Badulla | 1 | 1 | 0 | 1 | 3 | 4 | 1 | 3 | 4 | 1 | 7 | 2 | 8 | 4 | 1 | 0 | 0 | 0 | 25 | 16 | 41 |
| Monaragala | 0 | 0 | 0 | 1 | 0 | 2 | 3 | 2 | 1 | 0 | 1 | 0 | 3 | 1 | 1 | 0 | 1 | 0 | 10 | 6 | 16 |
| Ratnapura | 0 | 0 | 2 | 2 | 5 | 6 | 8 | 7 | 9 | 8 | 11 | 9 | 15 | 4 | 7 | 5 | 7 | 1 | 64 | 42 | 106 |
| Kegalle | 2 | 1 | 1 | 2 | 4 | 4 | 5 | 5 | 4 | 1 | 6 | 6 | 12 | 8 | 15 | 10 | 0 | 1 | 49 | 38 | 87 |
| Total | 28 | 18 | 23 | 26 | 58 | 73 | 110 | 83 | 110 | 65 | 228 | 118 | 271 | 137 | 238 | 121 | 94 | 30 | 1160 | 671 | 1831 |



Table 16: Age and Sex Distribution of All New PTB Cases by District in 2014

| District | 0-5 | | 5-14 | | 15-24 | | 25-34 | | 35-44 | | 45-54 | | 55-64 | | 65-74 | | >75 | | Total | | Total |
|--------------|-----------|-----------|-----------|-----------|------------|------------|------------|------------|------------|------------|-------------|------------|------------|------------|------------|------------|------------|-----------|-------------|-------------|-------------|
| | M | F | M | F | M | F | M | F | M | F | M | F | M | F | M | F | M | F | M | F | |
| Colombo | 9 | 8 | 6 | 9 | 67 | 81 | 116 | 66 | 152 | 57 | 289 | 77 | 234 | 75 | 123 | 51 | 37 | 18 | 1033 | 442 | 1475 |
| Gampaha | 1 | 0 | 2 | 2 | 21 | 34 | 65 | 33 | 78 | 20 | 138 | 40 | 109 | 34 | 81 | 23 | 25 | 10 | 520 | 196 | 716 |
| Kalutara | 2 | 0 | 1 | 4 | 16 | 14 | 28 | 19 | 37 | 15 | 56 | 15 | 66 | 23 | 47 | 29 | 13 | 7 | 266 | 126 | 392 |
| Kandy | 9 | 7 | 6 | 7 | 25 | 24 | 26 | 15 | 43 | 10 | 55 | 22 | 66 | 25 | 37 | 18 | 14 | 6 | 281 | 134 | 415 |
| Matale | 0 | 0 | 1 | 0 | 8 | 3 | 10 | 3 | 11 | 2 | 13 | 7 | 21 | 6 | 10 | 2 | 5 | 1 | 79 | 24 | 103 |
| Nuwara Eliya | 4 | 0 | 4 | 2 | 16 | 12 | 16 | 17 | 9 | 6 | 13 | 14 | 20 | 9 | 9 | 10 | 2 | 1 | 93 | 71 | 164 |
| Galle | 0 | 0 | 0 | 1 | 11 | 17 | 33 | 16 | 31 | 10 | 62 | 15 | 41 | 14 | 37 | 9 | 14 | 4 | 229 | 86 | 315 |
| Matara | 0 | 0 | 1 | 0 | 4 | 6 | 13 | 6 | 16 | 8 | 24 | 7 | 37 | 11 | 23 | 9 | 14 | 5 | 132 | 52 | 184 |
| Hambantota | 0 | 0 | 0 | 0 | 2 | 4 | 8 | 1 | 9 | 1 | 10 | 8 | 7 | 8 | 14 | 3 | 5 | 1 | 55 | 26 | 81 |
| Jaffna | 0 | 0 | 3 | 0 | 4 | 5 | 10 | 5 | 15 | 11 | 21 | 13 | 28 | 10 | 10 | 9 | 6 | 1 | 97 | 54 | 151 |
| Kilinochchi | 0 | 0 | 0 | 0 | 1 | 1 | 1 | 3 | 1 | 1 | 6 | 2 | 7 | 2 | 8 | 4 | 0 | 0 | 24 | 13 | 37 |
| Mullaitivu | 0 | 1 | 0 | 1 | 1 | 1 | 1 | 1 | 2 | 2 | 3 | 1 | 7 | 1 | 2 | 4 | 0 | 0 | 16 | 12 | 28 |
| Vavuniya | 0 | 0 | 0 | 0 | 3 | 3 | 5 | 3 | 5 | 0 | 7 | 3 | 8 | 1 | 4 | 0 | 2 | 0 | 34 | 10 | 44 |
| Mannar | 0 | 0 | 0 | 0 | 1 | 0 | 4 | 1 | 3 | 1 | 2 | 3 | 2 | 4 | 5 | 0 | 0 | 0 | 17 | 9 | 26 |
| Batticaloa | 0 | 0 | 1 | 1 | 7 | 11 | 8 | 2 | 9 | 7 | 17 | 6 | 20 | 7 | 11 | 11 | 6 | 3 | 79 | 48 | 127 |
| Ampara | 0 | 0 | 0 | 0 | 3 | 1 | 1 | 1 | 6 | 0 | 5 | 2 | 10 | 2 | 9 | 3 | 5 | 0 | 39 | 9 | 48 |
| Kalmunai | 0 | 0 | 0 | 0 | 8 | 3 | 11 | 3 | 10 | 10 | 25 | 9 | 23 | 7 | 13 | 8 | 6 | 0 | 96 | 40 | 136 |
| Trincomalee | 0 | 1 | 0 | 0 | 3 | 1 | 5 | 4 | 9 | 4 | 15 | 5 | 18 | 8 | 5 | 6 | 2 | 1 | 57 | 30 | 87 |
| Kurunegala | 0 | 0 | 1 | 6 | 15 | 8 | 28 | 8 | 45 | 14 | 69 | 16 | 47 | 33 | 32 | 19 | 14 | 8 | 251 | 112 | 363 |
| Puttalam | 0 | 0 | 0 | 0 | 7 | 4 | 11 | 8 | 7 | 1 | 20 | 6 | 18 | 3 | 12 | 5 | 3 | 2 | 78 | 29 | 107 |
| Anuradhapura | 0 | 0 | 2 | 5 | 8 | 8 | 15 | 6 | 20 | 2 | 44 | 9 | 26 | 5 | 13 | 4 | 1 | 0 | 129 | 39 | 168 |
| Polonnaruwa | 0 | 0 | 1 | 1 | 3 | 3 | 11 | 3 | 16 | 5 | 20 | 5 | 14 | 4 | 13 | 1 | 3 | 1 | 81 | 23 | 104 |
| Badulla | 1 | 1 | 1 | 2 | 11 | 13 | 12 | 11 | 19 | 6 | 27 | 4 | 28 | 7 | 7 | 3 | 2 | 0 | 108 | 47 | 155 |
| Monaragala | 0 | 0 | 0 | 2 | 2 | 5 | 13 | 3 | 8 | 2 | 6 | 2 | 11 | 1 | 6 | 0 | 4 | 0 | 50 | 15 | 65 |
| Ratnapura | 0 | 0 | 2 | 7 | 14 | 22 | 31 | 24 | 46 | 20 | 51 | 16 | 37 | 16 | 31 | 17 | 21 | 2 | 233 | 124 | 357 |
| Kegalle | 2 | 1 | 1 | 4 | 12 | 24 | 20 | 14 | 26 | 14 | 33 | 15 | 39 | 18 | 29 | 20 | 3 | 1 | 165 | 111 | 276 |
| Total | 28 | 19 | 33 | 54 | 273 | 308 | 502 | 276 | 633 | 229 | 1031 | 322 | 944 | 334 | 591 | 268 | 207 | 72 | 4242 | 1882 | 6124 |



Table 17: Age and Sex Distribution of New EPTB Cases by District in 2014

| District | 0-5 | | 5-14 | | 15-24 | | 25-34 | | 35-44 | | 45-54 | | 55-64 | | 65-74 | | >75 | | Total | | Total |
|--------------|-----------|-----------|-----------|-----------|------------|------------|------------|------------|------------|------------|------------|------------|------------|------------|------------|-----------|-----------|-----------|-------------|-------------|-------------|
| | M | F | M | F | M | F | M | F | M | F | M | F | M | F | M | F | M | F | M | F | |
| Colombo | 16 | 24 | 15 | 11 | 43 | 46 | 63 | 47 | 54 | 42 | 45 | 46 | 42 | 41 | 20 | 23 | 12 | 8 | 310 | 288 | 598 |
| Gampaha | 1 | 4 | 6 | 5 | 19 | 16 | 30 | 21 | 27 | 22 | 27 | 17 | 23 | 21 | 13 | 5 | 6 | 1 | 152 | 112 | 264 |
| Kalutara | 1 | 2 | 4 | 2 | 11 | 16 | 16 | 16 | 26 | 13 | 20 | 16 | 19 | 17 | 9 | 9 | 1 | 3 | 107 | 94 | 201 |
| Kandy | 3 | 0 | 5 | 2 | 12 | 15 | 19 | 14 | 20 | 17 | 14 | 17 | 24 | 19 | 10 | 11 | 2 | 4 | 109 | 99 | 208 |
| Matale | 2 | 0 | 1 | 2 | 5 | 1 | 7 | 9 | 2 | 4 | 5 | 4 | 10 | 3 | 2 | 1 | 0 | 0 | 34 | 24 | 58 |
| Nuwara Eliya | 0 | 2 | 0 | 2 | 7 | 6 | 10 | 5 | 4 | 5 | 6 | 4 | 8 | 6 | 4 | 1 | 0 | 0 | 39 | 31 | 70 |
| Galle | 1 | 0 | 1 | 2 | 10 | 3 | 18 | 6 | 14 | 11 | 12 | 8 | 15 | 5 | 11 | 2 | 3 | 1 | 85 | 38 | 123 |
| Matara | 0 | 1 | 0 | 0 | 3 | 3 | 7 | 8 | 5 | 2 | 10 | 5 | 17 | 5 | 7 | 1 | 8 | 2 | 57 | 27 | 84 |
| Hambantota | 0 | 0 | 1 | 2 | 4 | 1 | 5 | 5 | 3 | 7 | 9 | 4 | 3 | 6 | 0 | 1 | 0 | 0 | 25 | 26 | 51 |
| Jaffna | 0 | 0 | 2 | 1 | 4 | 5 | 9 | 4 | 8 | 3 | 10 | 7 | 5 | 9 | 11 | 4 | 1 | 0 | 50 | 33 | 83 |
| Kilinochchi | 0 | 0 | 0 | 0 | 1 | 2 | 2 | 0 | 0 | 1 | 3 | 0 | 2 | 2 | 0 | 1 | 0 | 0 | 8 | 6 | 14 |
| Mullaitivu | 0 | 0 | 0 | 0 | 1 | 0 | 1 | 0 | 0 | 0 | 0 | 3 | 0 | 0 | 0 | 1 | 0 | 0 | 2 | 4 | 6 |
| Vavuniya | 0 | 0 | 1 | 0 | 0 | 4 | 1 | 1 | 1 | 1 | 0 | 2 | 1 | 0 | 1 | 0 | 0 | 0 | 5 | 8 | 13 |
| Mannar | 0 | 0 | 1 | 0 | 1 | 3 | 2 | 2 | 0 | 1 | 1 | 4 | 1 | 1 | 1 | 0 | 0 | 0 | 7 | 11 | 18 |
| Batticaloa | 0 | 0 | 4 | 5 | 6 | 5 | 8 | 0 | 5 | 5 | 1 | 3 | 3 | 0 | 3 | 1 | 1 | 0 | 31 | 19 | 50 |
| Ampara | 0 | 0 | 2 | 1 | 1 | 2 | 1 | 0 | 2 | 1 | 4 | 3 | 1 | 0 | 0 | 1 | 3 | 0 | 14 | 8 | 22 |
| Kalmunai | 1 | 0 | 1 | 3 | 2 | 1 | 1 | 2 | 7 | 3 | 2 | 3 | 1 | 0 | 2 | 0 | 0 | 0 | 17 | 12 | 29 |
| Trincomalee | 0 | 0 | 1 | 1 | 3 | 3 | 4 | 4 | 5 | 7 | 1 | 2 | 1 | 4 | 1 | 1 | 1 | 1 | 17 | 23 | 40 |
| Kurunegala | 0 | 1 | 3 | 3 | 8 | 4 | 10 | 8 | 17 | 7 | 6 | 11 | 13 | 10 | 6 | 10 | 2 | 1 | 65 | 55 | 120 |
| Puttalam | 1 | 0 | 5 | 1 | 1 | 4 | 6 | 5 | 7 | 4 | 12 | 6 | 6 | 2 | 1 | 1 | 3 | 0 | 42 | 23 | 65 |
| Anuradhapura | 1 | 3 | 2 | 1 | 3 | 6 | 5 | 7 | 2 | 2 | 6 | 5 | 6 | 4 | 2 | 2 | 0 | 1 | 27 | 31 | 58 |
| Polonnaruwa | 0 | 2 | 0 | 0 | 2 | 0 | 6 | 4 | 4 | 2 | 5 | 3 | 2 | 2 | 1 | 0 | 0 | 0 | 20 | 13 | 33 |
| Badulla | 1 | 0 | 0 | 0 | 3 | 5 | 9 | 7 | 3 | 5 | 6 | 7 | 6 | 4 | 4 | 1 | 2 | 1 | 34 | 30 | 64 |
| Monaragala | 1 | 0 | 1 | 0 | 1 | 4 | 4 | 2 | 0 | 2 | 2 | 3 | 2 | 1 | 1 | 0 | 0 | 0 | 12 | 12 | 24 |
| Ratnapura | 1 | 1 | 5 | 2 | 11 | 17 | 16 | 18 | 13 | 17 | 11 | 13 | 12 | 5 | 18 | 3 | 6 | 3 | 93 | 79 | 172 |
| Kegalle | 1 | 0 | 1 | 0 | 5 | 5 | 9 | 6 | 6 | 9 | 4 | 7 | 17 | 13 | 8 | 8 | 1 | 0 | 52 | 48 | 100 |
| Total | 31 | 40 | 62 | 46 | 167 | 177 | 269 | 201 | 235 | 193 | 222 | 203 | 240 | 180 | 136 | 88 | 52 | 26 | 1414 | 1154 | 2568 |

Table 18: Distribution of Treatment Outcome of All forms of TB by Districts in 2013

| District | Cured | | Treatment Completed | | Treatment Success | | Died | | Failure | | Defaulted | | Transferred Out | | Not Evaluated | | Total |
|--------------|-------------|-------------|---------------------|-------------|-------------------|-------------|------------|------------|-----------|------------|------------|------------|-----------------|------------|---------------|------------|-------------|
| | No | Rate | No | Rate | No | Rate | No | Rate | No | Rate | No | Rate | No | Rate | No | Rate | |
| Colombo | 886 | 38.5 | 968 | 42.1 | 1854 | 80.6 | 134 | 5.8 | 17 | 0.7 | 189 | 8.2 | 0 | 0.0 | 81 | 3.5 | 2300 |
| Gampaha | 422 | 41.5 | 417 | 41.0 | 839 | 82.5 | 41 | 4.0 | 12 | 1.2 | 82 | 8.1 | 17 | 1.7 | 19 | 1.9 | 1017 |
| Kalutara | 294 | 42.8 | 282 | 41.0 | 576 | 83.8 | 41 | 6.0 | 5 | 0.7 | 37 | 5.4 | 0 | 0.0 | 15 | 2.2 | 687 |
| Kandy | 191 | 26.5 | 401 | 55.7 | 592 | 82.2 | 42 | 5.8 | 5 | 0.7 | 19 | 2.6 | 2 | 0.3 | 45 | 6.3 | 720 |
| Matale | 69 | 44.5 | 64 | 41.3 | 133 | 85.8 | 14 | 9.0 | 1 | 0.6 | 1 | 0.6 | 0 | 0.0 | 5 | 3.2 | 155 |
| Nuwara Eliya | 89 | 33.7 | 97 | 36.7 | 186 | 70.5 | 14 | 5.3 | 9 | 3.4 | 14 | 5.3 | 0 | 0.0 | 41 | 15.5 | 264 |
| Galle | 216 | 42.9 | 228 | 45.3 | 444 | 88.3 | 18 | 3.6 | 4 | 0.8 | 20 | 4.0 | 10 | 2.0 | 1 | 0.2 | 503 |
| Matara | 94 | 42.9 | 96 | 43.8 | 190 | 86.8 | 12 | 5.5 | 2 | 0.9 | 0 | 0.0 | 0 | 0.0 | 4 | 1.8 | 219 |
| Hambantota | 65 | 44.2 | 64 | 43.5 | 129 | 87.8 | 8 | 5.4 | 1 | 0.7 | 4 | 2.7 | 0 | 0.0 | 5 | 3.4 | 147 |
| Jaffna | 36 | 13.5 | 184 | 69.2 | 220 | 82.7 | 18 | 6.8 | 2 | 0.8 | 16 | 6.0 | 0 | 0.0 | 1 | 0.4 | 266 |
| Kilinochchi | 24 | 48.0 | 20 | 40.0 | 44 | 88.0 | 4 | 8.0 | 0 | 0.0 | 1 | 2.0 | 0 | 0.0 | 1 | 2.0 | 50 |
| Mullaitivu | 12 | 46.2 | 6 | 23.1 | 18 | 69.2 | 4 | 15.4 | 0 | 0.0 | 2 | 7.7 | 0 | 0.0 | 1 | 3.8 | 26 |
| Vavuniya | 34 | 52.3 | 20 | 30.8 | 54 | 83.1 | 8 | 12.3 | 0 | 0.0 | 1 | 1.5 | 0 | 0.0 | 1 | 1.5 | 65 |
| Mannar | 17 | 31.5 | 34 | 63.0 | 51 | 94.4 | 2 | 3.7 | 1 | 1.9 | 0 | 0.0 | 0 | 0.0 | 0 | 0.0 | 54 |
| Batticaloa | 120 | 51.3 | 78 | 33.3 | 198 | 84.6 | 21 | 9.0 | 6 | 2.6 | 0 | 0.0 | 0 | 0.0 | 5 | 2.1 | 234 |
| Ampara | 23 | 47.9 | 23 | 47.9 | 46 | 95.8 | 0 | 0.0 | 2 | 4.2 | 0 | 0.0 | 0 | 0.0 | 0 | 0.0 | 48 |
| Kalmunai | 63 | 42.9 | 69 | 46.9 | 132 | 89.8 | 13 | 8.8 | 0 | 0.0 | 1 | 0.7 | 0 | 0.0 | 1 | 0.7 | 147 |
| Trincomalee | 69 | 52.7 | 51 | 38.9 | 120 | 91.6 | 9 | 6.9 | 1 | 0.8 | 1 | 0.8 | 0 | 0.0 | 0 | 0.0 | 131 |
| Kurunegala | 179 | 32.0 | 267 | 47.7 | 446 | 79.6 | 29 | 5.2 | 3 | 0.5 | 19 | 3.4 | 1 | 0.2 | 13 | 2.3 | 560 |
| Puttalam | 66 | 34.7 | 71 | 37.4 | 137 | 72.1 | 16 | 8.4 | 2 | 1.1 | 8 | 4.2 | 9 | 4.7 | 18 | 9.5 | 190 |
| Anuradhapura | 165 | 62.3 | 83 | 31.3 | 248 | 93.6 | 11 | 4.2 | 2 | 0.8 | 0 | 0.0 | 0 | 0.0 | 0 | 0.0 | 265 |
| Polonnaruwa | 60 | 42.6 | 59 | 41.8 | 119 | 84.4 | 9 | 6.4 | 2 | 1.4 | 2 | 1.4 | 3 | 2.1 | 4 | 2.8 | 141 |
| Badulla | 96 | 35.2 | 113 | 41.4 | 209 | 76.6 | 13 | 4.8 | 4 | 1.5 | 9 | 3.3 | 1 | 0.4 | 32 | 11.7 | 273 |
| Monaragala | 52 | 57.8 | 30 | 33.3 | 82 | 91.1 | 7 | 7.8 | 0 | 0.0 | 0 | 0.0 | 0 | 0.0 | 0 | 0.0 | 90 |
| Ratnapura | 257 | 44.4 | 257 | 44.4 | 514 | 88.8 | 24 | 4.1 | 2 | 0.3 | 21 | 3.6 | 7 | 1.2 | 10 | 1.7 | 579 |
| Kegalle | 159 | 43.6 | 162 | 44.4 | 321 | 87.9 | 30 | 8.2 | 2 | 0.5 | 6 | 1.6 | 0 | 0.0 | 6 | 1.6 | 365 |
| Total | 3758 | 39.6 | 4144 | 43.6 | 7902 | 83.2 | 542 | 5.7 | 85 | 0.9 | 453 | 4.8 | 50 | 0.5 | 309 | 3.3 | 9496 |

Table 19: Distribution of Treatment Outcome of All Forms of New (PTB and EPTB) Cases by District in 2013

| District | Cured | | Treatment Completed | | Treatment Success | | Died | | Failure | | Defaulted | | Transferred Out | | Not Evaluated | | Total |
|--------------|-------------|-------------|---------------------|-------------|-------------------|-------------|------------|------------|-----------|------------|------------|------------|-----------------|------------|---------------|------------|-------------|
| | No | Rate | No | Rate | No | Rate | No | Rate | No | Rate | No | Rate | No | Rate | No | Rate | |
| Colombo | 811 | 38.4 | 935 | 44.3 | 1746 | 82.7 | 121 | 5.7 | 14 | 0.7 | 164 | 7.8 | 0 | 0.0 | 67 | 3.2 | 2112 |
| Gampaha | 395 | 41.8 | 402 | 42.5 | 797 | 84.2 | 38 | 4.0 | 12 | 1.3 | 70 | 7.4 | 15 | 1.6 | 14 | 1.5 | 946 |
| Kalutara | 274 | 43.0 | 275 | 43.2 | 549 | 86.2 | 38 | 6.0 | 4 | 0.6 | 31 | 4.9 | 0 | 0.0 | 15 | 2.4 | 637 |
| Kandy | 184 | 27.2 | 386 | 57.0 | 570 | 84.2 | 41 | 6.1 | 5 | 0.7 | 18 | 2.7 | 2 | 0.3 | 41 | 6.1 | 677 |
| Matale | 63 | 42.6 | 64 | 43.2 | 127 | 85.8 | 14 | 9.5 | 1 | 0.7 | 1 | 0.7 | 0 | 0.0 | 5 | 3.4 | 148 |
| Nuwara Eliya | 78 | 32.9 | 89 | 37.6 | 167 | 70.5 | 14 | 5.9 | 9 | 3.8 | 14 | 5.9 | 0 | 0.0 | 33 | 13.9 | 237 |
| Galle | 196 | 41.7 | 225 | 47.9 | 421 | 89.6 | 16 | 3.4 | 4 | 0.9 | 19 | 4.0 | 9 | 1.9 | 1 | 0.2 | 470 |
| Matara | 87 | 44.6 | 90 | 46.2 | 177 | 90.8 | 12 | 6.2 | 2 | 1.0 | 0 | 0.0 | 0 | 0.0 | 4 | 2.1 | 195 |
| Hambantota | 62 | 43.4 | 64 | 44.8 | 126 | 88.1 | 8 | 5.6 | 1 | 0.7 | 4 | 2.8 | 0 | 0.0 | 4 | 2.8 | 143 |
| Jaffna | 32 | 13.3 | 178 | 73.9 | 210 | 87.1 | 15 | 6.2 | 1 | 0.4 | 14 | 5.8 | 0 | 0.0 | 1 | 0.4 | 241 |
| Kilinochchi | 22 | 45.8 | 20 | 41.7 | 42 | 87.5 | 4 | 8.3 | 0 | 0.0 | 1 | 2.1 | 0 | 0.0 | 1 | 2.1 | 48 |
| Mullaitivu | 10 | 50.0 | 5 | 25.0 | 15 | 75.0 | 3 | 15.0 | 0 | 0.0 | 2 | 10.0 | 0 | 0.0 | 0 | 0.0 | 20 |
| Vavuniya | 33 | 53.2 | 20 | 32.3 | 53 | 85.5 | 7 | 11.3 | 0 | 0.0 | 1 | 1.6 | 0 | 0.0 | 1 | 1.6 | 62 |
| Mannar | 15 | 28.8 | 34 | 65.4 | 49 | 94.2 | 2 | 3.8 | 1 | 1.9 | 0 | 0.0 | 0 | 0.0 | 0 | 0.0 | 52 |
| Batticaloa | 113 | 51.6 | 77 | 35.2 | 190 | 86.8 | 19 | 8.7 | 6 | 2.7 | 0 | 0.0 | 0 | 0.0 | 4 | 1.8 | 219 |
| Ampara | 22 | 46.8 | 23 | 48.9 | 45 | 95.7 | 0 | 0.0 | 2 | 4.3 | 0 | 0.0 | 0 | 0.0 | 0 | 0.0 | 47 |
| Kalmunai | 59 | 43.4 | 64 | 47.1 | 123 | 90.4 | 11 | 8.1 | 0 | 0.0 | 1 | 0.7 | 0 | 0.0 | 1 | 0.7 | 136 |
| Trincomalee | 62 | 51.7 | 50 | 41.7 | 112 | 93.3 | 6 | 5.0 | 1 | 0.8 | 1 | 0.8 | 0 | 0.0 | 0 | 0.0 | 120 |
| Kurunegala | 167 | 38.0 | 214 | 48.6 | 381 | 86.6 | 25 | 5.7 | 3 | 0.7 | 17 | 3.9 | 1 | 0.2 | 13 | 3.0 | 440 |
| Puttalam | 61 | 33.7 | 71 | 39.2 | 132 | 72.9 | 15 | 8.3 | 2 | 1.1 | 6 | 3.3 | 9 | 5.0 | 17 | 9.4 | 181 |
| Anuradhapura | 156 | 62.4 | 83 | 33.2 | 239 | 95.6 | 10 | 4.0 | 1 | 0.4 | 0 | 0.0 | 0 | 0.0 | 0 | 0.0 | 250 |
| Polonnaruwa | 56 | 41.8 | 58 | 43.3 | 114 | 85.1 | 9 | 6.7 | 2 | 1.5 | 2 | 1.5 | 3 | 2.2 | 4 | 3.0 | 134 |
| Badulla | 89 | 35.6 | 109 | 43.6 | 198 | 79.2 | 13 | 5.2 | 3 | 1.2 | 7 | 2.8 | 1 | 0.4 | 28 | 11.2 | 250 |
| Monaragala | 52 | 58.4 | 30 | 33.7 | 82 | 92.1 | 7 | 7.9 | 0 | 0.0 | 0 | 0.0 | 0 | 0.0 | 0 | 0.0 | 89 |
| Ratnapura | 253 | 45.3 | 256 | 45.8 | 509 | 91.1 | 23 | 4.1 | 2 | 0.4 | 19 | 3.4 | 5 | 0.9 | 1 | 0.2 | 559 |
| Kegalle | 155 | 43.8 | 157 | 44.4 | 312 | 88.1 | 29 | 8.2 | 2 | 0.6 | 5 | 1.4 | 0 | 0.0 | 6 | 1.7 | 354 |
| Total | 3507 | 40.0 | 3979 | 45.4 | 7486 | 85.4 | 500 | 5.7 | 78 | 0.9 | 397 | 4.5 | 45 | 0.5 | 261 | 3.0 | 8767 |

Table 20: Distribution of Treatment Outcome of All New PTB Cases by District in 2013

| District | Cured | | Treatment Completed | | Treatment Success | | Died | | Failure | | Defaulted | | Transferred Out | | Not Evaluated | | Total |
|--------------|-------------|-------------|---------------------|-------------|-------------------|-------------|------------|------------|-----------|------------|------------|------------|-----------------|------------|---------------|------------|-------------|
| | No | Rate | No | Rate | No | Rate | No | Rate | No | Rate | No | Rate | No | Rate | No | Rate | |
| Colombo | 811 | 53.9 | 412 | 27.4 | 900 | 59.8 | 92 | 6.1 | 14 | 0.9 | 141 | 9.4 | 0 | 0.0 | 36 | 2.4 | 1506 |
| Gampaha | 395 | 57.2 | 180 | 26.0 | 432 | 62.5 | 29 | 4.2 | 10 | 1.4 | 60 | 8.7 | 9 | 1.3 | 8 | 1.2 | 691 |
| Kalutara | 274 | 61.2 | 109 | 24.3 | 294 | 65.6 | 29 | 6.5 | 4 | 0.9 | 25 | 5.6 | 0 | 0.0 | 7 | 1.6 | 448 |
| Kandy | 184 | 39.1 | 212 | 45.1 | 192 | 40.9 | 32 | 6.8 | 5 | 1.1 | 9 | 1.9 | 2 | 0.4 | 26 | 5.5 | 470 |
| Matale | 63 | 60.6 | 27 | 26.0 | 63 | 60.6 | 9 | 8.7 | 1 | 1.0 | 1 | 1.0 | 0 | 0.0 | 3 | 2.9 | 104 |
| Nuwara Eliya | 78 | 43.3 | 46 | 25.6 | 79 | 43.9 | 12 | 6.7 | 8 | 4.4 | 10 | 5.6 | 0 | 0.0 | 26 | 14.4 | 180 |
| Galle | 196 | 59.9 | 94 | 28.7 | 214 | 65.4 | 13 | 4.0 | 4 | 1.2 | 13 | 4.0 | 7 | 2.1 | 0 | 0.0 | 327 |
| Matara | 87 | 64.4 | 35 | 25.9 | 87 | 64.4 | 9 | 6.7 | 1 | 0.7 | 0 | 0.0 | 0 | 0.0 | 3 | 2.2 | 135 |
| Hambantota | 62 | 59.6 | 30 | 28.8 | 64 | 61.5 | 8 | 7.7 | 1 | 1.0 | 2 | 1.9 | 0 | 0.0 | 1 | 1.0 | 104 |
| Jaffna | 32 | 18.7 | 116 | 67.8 | 80 | 46.8 | 11 | 6.4 | 1 | 0.6 | 10 | 5.8 | 0 | 0.0 | 1 | 0.6 | 171 |
| Kilinochchi | 22 | 68.8 | 7 | 21.9 | 22 | 68.8 | 3 | 9.4 | 0 | 0.0 | 0 | 0.0 | 0 | 0.0 | 0 | 0.0 | 32 |
| Mullaitivu | 10 | 62.5 | 2 | 12.5 | 10 | 62.5 | 3 | 18.8 | 0 | 0.0 | 1 | 6.3 | 0 | 0.0 | 0 | 0.0 | 16 |
| Vavuniya | 33 | 80.5 | 4 | 9.8 | 37 | 90.2 | 3 | 7.3 | 0 | 0.0 | 0 | 0.0 | 0 | 0.0 | 1 | 2.4 | 41 |
| Mannar | 15 | 32.6 | 29 | 63.0 | 15 | 32.6 | 1 | 2.2 | 1 | 2.2 | 0 | 0.0 | 0 | 0.0 | 0 | 0.0 | 46 |
| Batticaloa | 113 | 72.0 | 24 | 15.3 | 114 | 72.6 | 12 | 7.6 | 5 | 3.2 | 0 | 0.0 | 0 | 0.0 | 3 | 1.9 | 157 |
| Ampara | 22 | 62.9 | 11 | 31.4 | 22 | 62.9 | 0 | 0.0 | 2 | 5.7 | 0 | 0.0 | 0 | 0.0 | 0 | 0.0 | 35 |
| Kalmunai | 59 | 53.2 | 42 | 37.8 | 66 | 59.5 | 10 | 9.0 | 0 | 0.0 | 0 | 0.0 | 0 | 0.0 | 0 | 0.0 | 111 |
| Trincomalee | 62 | 69.7 | 22 | 24.7 | 62 | 69.7 | 3 | 3.4 | 1 | 1.1 | 1 | 1.1 | 0 | 0.0 | 0 | 0.0 | 89 |
| Kurunegala | 167 | 51.4 | 116 | 35.7 | 169 | 52.0 | 18 | 5.5 | 3 | 0.9 | 13 | 4.0 | 0 | 0.0 | 8 | 2.5 | 325 |
| Puttalam | 61 | 49.6 | 25 | 20.3 | 71 | 57.7 | 12 | 9.8 | 2 | 1.6 | 6 | 4.9 | 6 | 4.9 | 11 | 8.9 | 123 |
| Anuradhapura | 156 | 79.6 | 30 | 15.3 | 156 | 79.6 | 9 | 4.6 | 1 | 0.5 | 0 | 0.0 | 0 | 0.0 | 0 | 0.0 | 196 |
| Polonnaruwa | 56 | 51.4 | 35 | 32.1 | 56 | 51.4 | 9 | 8.3 | 2 | 1.8 | 2 | 1.8 | 2 | 1.8 | 3 | 2.8 | 109 |
| Badulla | 89 | 50.6 | 44 | 25.0 | 93 | 52.8 | 13 | 7.4 | 3 | 1.7 | 6 | 3.4 | 1 | 0.6 | 20 | 11.4 | 176 |
| Monaragala | 52 | 75.4 | 11 | 15.9 | 52 | 75.4 | 6 | 8.7 | 0 | 0.0 | 0 | 0.0 | 0 | 0.0 | 0 | 0.0 | 69 |
| Ratnapura | 253 | 63.7 | 107 | 27.0 | 259 | 65.2 | 17 | 4.3 | 2 | 0.5 | 12 | 3.0 | 5 | 1.3 | 1 | 0.3 | 397 |
| Kegalle | 155 | 63.0 | 65 | 26.4 | 161 | 65.4 | 18 | 7.3 | 2 | 0.8 | 3 | 1.2 | 0 | 0.0 | 3 | 1.2 | 246 |
| Total | 3507 | 55.6 | 1835 | 29.1 | 5342 | 84.7 | 381 | 6.0 | 73 | 1.2 | 315 | 5.0 | 26 | 0.4 | 85 | 1.3 | 6304 |

Table 21: Distribution of Treatment Outcome of New Sputum Positive PTB Cases by District in 2013

| District | Cured | | Treatment Completed | | Treatment Success | | Died | | Failure | | Defaulted | | Transferred Out | | Not Evaluated | | Total |
|--------------|-------------|-------------|---------------------|------------|-------------------|-------------|------------|------------|-----------|------------|------------|------------|-----------------|------------|---------------|------------|-------------|
| | No | Rate | No | Rate | No | Rate | No | Rate | No | Rate | No | Rate | No | Rate | No | Rate | |
| Colombo | 811 | 73.7 | 89 | 8.1 | 900 | 81.7 | 56 | 5.1 | 12 | 1.1 | 113 | 10.3 | 0 | 0.0 | 20 | 1.8 | 1101 |
| Gampaha | 395 | 76.1 | 37 | 7.1 | 432 | 83.2 | 21 | 4.0 | 10 | 1.9 | 46 | 8.9 | 5 | 1.0 | 5 | 1.0 | 519 |
| Kalutara | 274 | 80.4 | 20 | 5.9 | 294 | 86.2 | 18 | 5.3 | 4 | 1.2 | 21 | 6.2 | 0 | 0.0 | 4 | 1.2 | 341 |
| Kandy | 184 | 78.6 | 8 | 3.4 | 192 | 82.1 | 19 | 8.1 | 5 | 2.1 | 6 | 2.6 | 2 | 0.9 | 10 | 4.3 | 234 |
| Matale | 63 | 88.7 | 0 | 0.0 | 63 | 88.7 | 6 | 8.5 | 1 | 1.4 | 1 | 1.4 | 0 | 0.0 | 0 | 0.0 | 71 |
| Nuwara Eliya | 78 | 69.6 | 1 | 0.9 | 79 | 70.5 | 6 | 5.4 | 6 | 5.4 | 4 | 3.6 | 0 | 0.0 | 17 | 15.2 | 112 |
| Galle | 196 | 80.7 | 18 | 7.4 | 214 | 88.1 | 11 | 4.5 | 3 | 1.2 | 9 | 3.7 | 6 | 2.5 | 0 | 0.0 | 243 |
| Matara | 87 | 92.6 | 0 | 0.0 | 87 | 92.6 | 6 | 6.4 | 1 | 1.1 | 0 | 0.0 | 0 | 0.0 | 0 | 0.0 | 94 |
| Hambantota | 62 | 84.9 | 2 | 2.7 | 64 | 87.7 | 6 | 8.2 | 1 | 1.4 | 2 | 2.7 | 0 | 0.0 | 0 | 0.0 | 73 |
| Jaffna | 32 | 33.7 | 48 | 50.5 | 80 | 84.2 | 7 | 7.4 | 1 | 1.1 | 7 | 7.4 | 0 | 0.0 | 0 | 0.0 | 95 |
| Kilinochchi | 22 | 95.7 | 0 | 0.0 | 22 | 95.7 | 1 | 4.3 | 0 | 0.0 | 0 | 0.0 | 0 | 0.0 | 0 | 0.0 | 23 |
| Mullaitivu | 10 | 90.9 | 0 | 0.0 | 10 | 90.9 | 1 | 9.1 | 0 | 0.0 | 0 | 0.0 | 0 | 0.0 | 0 | 0.0 | 11 |
| Vavuniya | 33 | 82.5 | 4 | 10.0 | 37 | 92.5 | 3 | 7.5 | 0 | 0.0 | 0 | 0.0 | 0 | 0.0 | 0 | 0.0 | 40 |
| Mannar | 15 | 93.8 | 0 | 0.0 | 15 | 93.8 | 0 | 0.0 | 1 | 6.3 | 0 | 0.0 | 0 | 0.0 | 0 | 0.0 | 16 |
| Batticaloa | 113 | 90.4 | 1 | 0.8 | 114 | 91.2 | 6 | 4.8 | 3 | 2.4 | 0 | 0.0 | 0 | 0.0 | 2 | 1.6 | 125 |
| Ampara | 22 | 91.7 | 0 | 0.0 | 22 | 91.7 | 0 | 0.0 | 2 | 8.3 | 0 | 0.0 | 0 | 0.0 | 0 | 0.0 | 24 |
| Kalmunai | 59 | 80.8 | 7 | 9.6 | 66 | 90.4 | 7 | 9.6 | 0 | 0.0 | 0 | 0.0 | 0 | 0.0 | 0 | 0.0 | 73 |
| Trincomalee | 62 | 93.9 | 0 | 0.0 | 62 | 93.9 | 2 | 3.0 | 1 | 1.5 | 1 | 1.5 | 0 | 0.0 | 0 | 0.0 | 66 |
| Kurunegala | 167 | 84.8 | 2 | 1.0 | 169 | 85.8 | 13 | 6.6 | 3 | 1.5 | 9 | 4.6 | 0 | 0.0 | 3 | 1.5 | 197 |
| Puttalam | 61 | 64.2 | 10 | 10.5 | 71 | 74.7 | 4 | 4.2 | 2 | 2.1 | 6 | 6.3 | 6 | 6.3 | 6 | 6.3 | 95 |
| Anuradhapura | 156 | 95.1 | 0 | 0.0 | 156 | 95.1 | 7 | 4.3 | 1 | 0.6 | 0 | 0.0 | 0 | 0.0 | 0 | 0.0 | 164 |
| Polonnaruwa | 56 | 83.6 | 0 | 0.0 | 56 | 83.6 | 4 | 6.0 | 2 | 3.0 | 2 | 3.0 | 2 | 3.0 | 1 | 1.5 | 67 |
| Badulla | 89 | 70.6 | 4 | 3.2 | 93 | 73.8 | 9 | 7.1 | 3 | 2.4 | 5 | 4.0 | 1 | 0.8 | 15 | 11.9 | 126 |
| Monaragala | 52 | 91.2 | 0 | 0.0 | 52 | 91.2 | 5 | 8.8 | 0 | 0.0 | 0 | 0.0 | 0 | 0.0 | 0 | 0.0 | 57 |
| Ratnapura | 253 | 90.4 | 6 | 2.1 | 259 | 92.5 | 9 | 3.2 | 2 | 0.7 | 6 | 2.1 | 4 | 1.4 | 0 | 0.0 | 280 |
| Kegalle | 155 | 88.1 | 6 | 3.4 | 161 | 91.5 | 9 | 5.1 | 2 | 1.1 | 2 | 1.1 | 0 | 0.0 | 2 | 1.1 | 176 |
| Total | 3507 | 79.3 | 263 | 5.9 | 3770 | 85.2 | 236 | 5.3 | 66 | 1.5 | 240 | 5.4 | 26 | 0.6 | 85 | 1.9 | 4423 |

Table 22: Distribution of Treatment Outcome of New Sputum Negative PTB Cases by District in 2013

| District | Treatment Completed | | Died | | Failure | | Defaulted | | Transferred Out | | Not Evaluated | | Total |
|--------------|---------------------|-------------|------------|------------|----------|------------|-----------|------------|-----------------|------------|---------------|------------|-------------|
| | No | Rate | No | Rate | No | Rate | No | Rate | No | Rate | No | Rate | |
| Colombo | 323 | 79.8 | 36 | 8.9 | 2 | 0.5 | 28 | 6.9 | 0 | 0.0 | 16 | 4.0 | 405 |
| Gampaha | 143 | 83.1 | 8 | 4.7 | 0 | 0.0 | 14 | 8.1 | 4 | 2.3 | 3 | 1.7 | 172 |
| Kalutara | 89 | 83.2 | 11 | 10.3 | 0 | 0.0 | 4 | 3.7 | 0 | 0.0 | 3 | 2.8 | 107 |
| Kandy | 204 | 86.4 | 13 | 5.5 | 0 | 0.0 | 3 | 1.3 | 0 | 0.0 | 16 | 6.8 | 236 |
| Matale | 27 | 81.8 | 3 | 9.1 | 0 | 0.0 | 0 | 0.0 | 0 | 0.0 | 3 | 9.1 | 33 |
| Nuwara Eliya | 45 | 66.2 | 6 | 8.8 | 2 | 2.9 | 6 | 8.8 | 0 | 0.0 | 9 | 13.2 | 68 |
| Galle | 76 | 90.5 | 2 | 2.4 | 1 | 1.2 | 4 | 4.8 | 1 | 1.2 | 0 | 0.0 | 84 |
| Matara | 35 | 85.4 | 3 | 7.3 | 0 | 0.0 | 0 | 0.0 | 0 | 0.0 | 3 | 7.3 | 41 |
| Hambantota | 28 | 90.3 | 2 | 6.5 | 0 | 0.0 | 0 | 0.0 | 0 | 0.0 | 1 | 3.2 | 31 |
| Jaffna | 68 | 89.5 | 4 | 5.3 | 0 | 0.0 | 3 | 3.9 | 0 | 0.0 | 1 | 1.3 | 76 |
| Kilinochchi | 7 | 77.8 | 2 | 22.2 | 0 | 0.0 | 0 | 0.0 | 0 | 0.0 | 0 | 0.0 | 9 |
| Mullaitivu | 2 | 40.0 | 2 | 40.0 | 0 | 0.0 | 1 | 20.0 | 0 | 0.0 | 0 | 0.0 | 5 |
| Vavuniya | 0 | 0.0 | 0 | 0.0 | 0 | 0.0 | 0 | 0.0 | 0 | 0.0 | 1 | 100.0 | 1 |
| Mannar | 29 | 96.7 | 1 | 3.3 | 0 | 0.0 | 0 | 0.0 | 0 | 0.0 | 0 | 0.0 | 30 |
| Batticaloa | 23 | 71.9 | 6 | 18.8 | 2 | 6.3 | 0 | 0.0 | 0 | 0.0 | 1 | 3.1 | 32 |
| Ampara | 11 | 100.0 | 0 | 0.0 | 0 | 0.0 | 0 | 0.0 | 0 | 0.0 | 0 | 0.0 | 11 |
| Kalmunai | 35 | 92.1 | 3 | 7.9 | 0 | 0.0 | 0 | 0.0 | 0 | 0.0 | 0 | 0.0 | 38 |
| Trincomalee | 22 | 95.7 | 1 | 4.3 | 0 | 0.0 | 0 | 0.0 | 0 | 0.0 | 0 | 0.0 | 23 |
| Kurunegala | 114 | 89.1 | 5 | 3.9 | 0 | 0.0 | 4 | 3.1 | 0 | 0.0 | 5 | 3.9 | 128 |
| Puttalam | 15 | 53.6 | 8 | 28.6 | 0 | 0.0 | 0 | 0.0 | 0 | 0.0 | 5 | 17.9 | 28 |
| Anuradhapura | 30 | 93.8 | 2 | 6.3 | 0 | 0.0 | 0 | 0.0 | 0 | 0.0 | 0 | 0.0 | 32 |
| Polonnaruwa | 35 | 83.3 | 5 | 11.9 | 0 | 0.0 | 0 | 0.0 | 0 | 0.0 | 2 | 4.8 | 42 |
| Badulla | 40 | 80.0 | 4 | 8.0 | 0 | 0.0 | 1 | 2.0 | 0 | 0.0 | 5 | 10.0 | 50 |
| Monaragala | 11 | 91.7 | 1 | 8.3 | 0 | 0.0 | 0 | 0.0 | 0 | 0.0 | 0 | 0.0 | 12 |
| Ratnapura | 101 | 86.3 | 8 | 6.8 | 0 | 0.0 | 6 | 5.1 | 1 | 0.9 | 1 | 0.9 | 117 |
| Kegalle | 59 | 84.3 | 9 | 12.9 | 0 | 0.0 | 1 | 1.4 | 0 | 0.0 | 1 | 1.4 | 70 |
| Total | 1572 | 83.6 | 145 | 7.7 | 7 | 0.4 | 75 | 4.0 | 6 | 0.3 | 76 | 4.0 | 1881 |

Table 23: Distribution of Treatment Outcome of EPTB Cases by District in 2013

| District | Treatment Completed | | Died | | Failure | | Defaulted | | Transferred Out | | Not Evaluated | | Total |
|--------------|---------------------|-------------|------------|------------|----------|------------|-----------|------------|-----------------|------------|---------------|------------|-------------|
| | No | Rate | No | Rate | No | Rate | No | Rate | No | Rate | No | Rate | |
| Colombo | 523 | 86.3 | 29 | 4.8 | 0 | 0.0 | 23 | 3.8 | 0 | 0.0 | 31 | 5.1 | 606 |
| Gampaha | 222 | 87.1 | 9 | 3.5 | 2 | 0.8 | 10 | 3.9 | 6 | 2.4 | 6 | 2.4 | 255 |
| Kalutara | 166 | 87.8 | 9 | 4.8 | 0 | 0.0 | 6 | 3.2 | 0 | 0.0 | 8 | 4.2 | 189 |
| Kandy | 174 | 84.1 | 9 | 4.3 | 0 | 0.0 | 9 | 4.3 | 0 | 0.0 | 15 | 7.2 | 207 |
| Matale | 37 | 84.1 | 5 | 11.4 | 0 | 0.0 | 0 | 0.0 | 0 | 0.0 | 2 | 4.5 | 44 |
| Nuwara Eliya | 43 | 75.4 | 2 | 3.5 | 1 | 1.8 | 4 | 7.0 | 0 | 0.0 | 7 | 12.3 | 57 |
| Galle | 131 | 91.6 | 3 | 2.1 | 0 | 0.0 | 6 | 4.2 | 2 | 1.4 | 1 | 0.7 | 143 |
| Matara | 55 | 91.7 | 3 | 5.0 | 1 | 1.7 | 0 | 0.0 | 0 | 0.0 | 1 | 1.7 | 60 |
| Hambantota | 34 | 87.2 | 0 | 0.0 | 0 | 0.0 | 2 | 5.1 | 0 | 0.0 | 3 | 7.7 | 39 |
| Jaffna | 62 | 88.6 | 4 | 5.7 | 0 | 0.0 | 4 | 5.7 | 0 | 0.0 | 0 | 0.0 | 70 |
| Kilinochchi | 13 | 81.3 | 1 | 6.3 | 0 | 0.0 | 1 | 6.3 | 0 | 0.0 | 1 | 6.3 | 16 |
| Mullaitivu | 3 | 75.0 | 0 | 0.0 | 0 | 0.0 | 1 | 25.0 | 0 | 0.0 | 0 | 0.0 | 4 |
| Vavuniya | 16 | 76.2 | 4 | 19.0 | 0 | 0.0 | 1 | 4.8 | 0 | 0.0 | 0 | 0.0 | 21 |
| Mannar | 5 | 83.3 | 1 | 16.7 | 0 | 0.0 | 0 | 0.0 | 0 | 0.0 | 0 | 0.0 | 6 |
| Batticaloa | 53 | 85.5 | 7 | 11.3 | 1 | 1.6 | 0 | 0.0 | 0 | 0.0 | 1 | 1.6 | 62 |
| Ampara | 12 | 100.0 | 0 | 0.0 | 0 | 0.0 | 0 | 0.0 | 0 | 0.0 | 0 | 0.0 | 12 |
| Kalmunai | 22 | 88.0 | 1 | 4.0 | 0 | 0.0 | 1 | 4.0 | 0 | 0.0 | 1 | 4.0 | 25 |
| Trincomalee | 28 | 90.3 | 3 | 9.7 | 0 | 0.0 | 0 | 0.0 | 0 | 0.0 | 0 | 0.0 | 31 |
| Kurunegala | 98 | 85.2 | 7 | 6.1 | 0 | 0.0 | 4 | 3.5 | 1 | 0.9 | 5 | 4.3 | 115 |
| Puttalam | 46 | 79.3 | 3 | 5.2 | 0 | 0.0 | 0 | 0.0 | 3 | 5.2 | 6 | 10.3 | 58 |
| Anuradhapura | 53 | 98.1 | 1 | 1.9 | 0 | 0.0 | 0 | 0.0 | 0 | 0.0 | 0 | 0.0 | 54 |
| Polonnaruwa | 23 | 92.0 | 0 | 0.0 | 0 | 0.0 | 0 | 0.0 | 1 | 4.0 | 1 | 4.0 | 25 |
| Badulla | 65 | 87.8 | 0 | 0.0 | 0 | 0.0 | 1 | 1.4 | 0 | 0.0 | 8 | 10.8 | 74 |
| Monaragala | 19 | 95.0 | 1 | 5.0 | 0 | 0.0 | 0 | 0.0 | 0 | 0.0 | 0 | 0.0 | 20 |
| Ratnapura | 149 | 92.0 | 6 | 3.7 | 0 | 0.0 | 7 | 4.3 | 0 | 0.0 | 0 | 0.0 | 162 |
| Kegalle | 92 | 85.2 | 11 | 10.2 | 0 | 0.0 | 2 | 1.9 | 0 | 0.0 | 3 | 2.8 | 108 |
| Total | 2144 | 87.0 | 119 | 4.8 | 5 | 0.2 | 82 | 3.3 | 13 | 0.5 | 100 | 4.1 | 2463 |

Table 24: Distribution of Treatment Outcome of Retreatment TB Cases by District in 2013

| District | Cured | | Treatment Completed | | Died | | Failure | | Defaulted | | Transferred Out | | Not Evaluated | | Total |
|--------------|------------|-------------|---------------------|------------|-----------|------------|----------|------------|-----------|-------------|-----------------|------------|---------------|------------|------------|
| | No | Rate | No | Rate | No | Rate | No | Rate | No | Rate | No | Rate | No | Rate | |
| Colombo | 71 | 57.7 | 5 | 4.1 | 10 | 8.1 | 3 | 2.4 | 24 | 19.5 | 0 | 0.0 | 10 | 8.1 | 123 |
| Gampaha | 27 | 48.2 | 9 | 16.1 | 3 | 5.4 | 0 | 0.0 | 12 | 21.4 | 1 | 1.8 | 4 | 7.1 | 56 |
| Kalutara | 20 | 64.5 | 1 | 3.2 | 3 | 9.7 | 1 | 3.2 | 6 | 19.4 | 0 | 0.0 | 0 | 0.0 | 31 |
| Kandy | 7 | 63.6 | 0 | 0.0 | 1 | 9.1 | 0 | 0.0 | 0 | 0.0 | 0 | 0.0 | 3 | 27.3 | 11 |
| Matale | 6 | 100.0 | 0 | 0.0 | 0 | 0.0 | 0 | 0.0 | 0 | 0.0 | 0 | 0.0 | 0 | 0.0 | 6 |
| Nuwara Eliya | 11 | 91.7 | 1 | 8.3 | 0 | 0.0 | 0 | 0.0 | 0 | 0.0 | 0 | 0.0 | 0 | 0.0 | 12 |
| Galle | 20 | 76.9 | 3 | 11.5 | 2 | 7.7 | 0 | 0.0 | 0 | 0.0 | 1 | 3.8 | 0 | 0.0 | 26 |
| Matara | 7 | 100.0 | 0 | 0.0 | 0 | 0.0 | 0 | 0.0 | 0 | 0.0 | 0 | 0.0 | 0 | 0.0 | 7 |
| Hambantota | 3 | 100.0 | 0 | 0.0 | 0 | 0.0 | 0 | 0.0 | 0 | 0.0 | 0 | 0.0 | 0 | 0.0 | 3 |
| Jaffna | 4 | 26.7 | 5 | 33.3 | 3 | 20.0 | 1 | 6.7 | 2 | 13.3 | 0 | 0.0 | 0 | 0.0 | 15 |
| Kilinochchi | 2 | 100.0 | 0 | 0.0 | 0 | 0.0 | 0 | 0.0 | 0 | 0.0 | 0 | 0.0 | 0 | 0.0 | 2 |
| Mullaitivu | 2 | 50.0 | 1 | 25.0 | 1 | 25.0 | 0 | 0.0 | 0 | 0.0 | 0 | 0.0 | 0 | 0.0 | 4 |
| Vavuniya | 1 | 100.0 | 0 | 0.0 | 0 | 0.0 | 0 | 0.0 | 0 | 0.0 | 0 | 0.0 | 0 | 0.0 | 1 |
| Mannar | 2 | 100.0 | 0 | 0.0 | 0 | 0.0 | 0 | 0.0 | 0 | 0.0 | 0 | 0.0 | 0 | 0.0 | 2 |
| Batticaloa | 7 | 70.0 | 0 | 0.0 | 2 | 20.0 | 0 | 0.0 | 0 | 0.0 | 0 | 0.0 | 1 | 10.0 | 10 |
| Ampara | 1 | 100.0 | 0 | 0.0 | 0 | 0.0 | 0 | 0.0 | 0 | 0.0 | 0 | 0.0 | 0 | 0.0 | 1 |
| Kalmunai | 4 | 66.7 | 0 | 0.0 | 2 | 33.3 | 0 | 0.0 | 0 | 0.0 | 0 | 0.0 | 0 | 0.0 | 6 |
| Trincomalee | 7 | 70.0 | 0 | 0.0 | 3 | 30.0 | 0 | 0.0 | 0 | 0.0 | 0 | 0.0 | 0 | 0.0 | 10 |
| Kurunegala | 12 | 63.2 | 4 | 21.1 | 1 | 5.3 | 0 | 0.0 | 2 | 10.5 | 0 | 0.0 | 0 | 0.0 | 19 |
| Puttalam | 5 | 55.6 | 0 | 0.0 | 1 | 11.1 | 0 | 0.0 | 2 | 22.2 | 0 | 0.0 | 1 | 11.1 | 9 |
| Anuradhapura | 9 | 81.8 | 0 | 0.0 | 1 | 9.1 | 1 | 9.1 | 0 | 0.0 | 0 | 0.0 | 0 | 0.0 | 11 |
| Polonnaruwa | 4 | 100.0 | 0 | 0.0 | 0 | 0.0 | 0 | 0.0 | 0 | 0.0 | 0 | 0.0 | 0 | 0.0 | 4 |
| Badulla | 7 | 46.7 | 2 | 13.3 | 0 | 0.0 | 1 | 6.7 | 2 | 13.3 | 0 | 0.0 | 3 | 20.0 | 15 |
| Monaragala | 0 | 0.0 | 0 | 0.0 | 0 | 0.0 | 0 | 0.0 | 0 | 0.0 | 0 | 0.0 | 0 | 0.0 | 0 |
| Ratnapura | 4 | 22.2 | 0 | 0.0 | 1 | 5.6 | 0 | 0.0 | 2 | 11.1 | 2 | 11.1 | 9 | 50.0 | 18 |
| Kegalle | 4 | 50.0 | 2 | 25.0 | 1 | 12.5 | 0 | 0.0 | 1 | 12.5 | 0 | 0.0 | 0 | 0.0 | 8 |
| Total | 247 | 60.2 | 33 | 8.0 | 35 | 8.5 | 7 | 1.7 | 53 | 12.9 | 4 | 1.0 | 31 | 7.6 | 410 |

Table 25: Distribution of Treatment Outcome of Other TB Cases by District in 2013

| District | Cured | | Treatment Completed | | Died | | Failure | | Defaulted | | Transferred Out | | Not Evaluated | | Total |
|--------------|----------|------------|---------------------|-------------|----------|------------|----------|------------|-----------|------------|-----------------|------------|---------------|------------|------------|
| | No | Rate | No | Rate | No | Rate | No | Rate | No | Rate | No | Rate | No | Rate | |
| Colombo | 4 | 6.2 | 28 | 43.1 | 3 | 4.6 | 0 | 0.0 | 1 | 1.5 | 0 | 0.0 | 4 | 6.2 | 65 |
| Gampaha | 0 | 0.0 | 6 | 40.0 | 0 | 0.0 | 0 | 0.0 | 0 | 0.0 | 1 | 6.7 | 1 | 6.7 | 15 |
| Kalutara | 0 | 0.0 | 6 | 31.6 | 0 | 0.0 | 0 | 0.0 | 0 | 0.0 | 0 | 0.0 | 0 | 0.0 | 19 |
| Kandy | 0 | 0.0 | 15 | 46.9 | 0 | 0.0 | 0 | 0.0 | 1 | 3.1 | 0 | 0.0 | 1 | 3.1 | 32 |
| Matale | 0 | 0.0 | 0 | 0.0 | 0 | 0.0 | 0 | 0.0 | 0 | 0.0 | 0 | 0.0 | 0 | 0.0 | 1 |
| Nuwara Eliya | 0 | 0.0 | 7 | 46.7 | 0 | 0.0 | 0 | 0.0 | 0 | 0.0 | 0 | 0.0 | 8 | 53.3 | 15 |
| Galle | 0 | 0.0 | 0 | 0.0 | 0 | 0.0 | 0 | 0.0 | 1 | 14.3 | 0 | 0.0 | 0 | 0.0 | 7 |
| Matara | 0 | 0.0 | 6 | 35.3 | 0 | 0.0 | 0 | 0.0 | 0 | 0.0 | 0 | 0.0 | 0 | 0.0 | 17 |
| Hambantota | 0 | 0.0 | 0 | 0.0 | 0 | 0.0 | 0 | 0.0 | 0 | 0.0 | 0 | 0.0 | 1 | 100.0 | 1 |
| Jaffna | 0 | 0.0 | 1 | 10.0 | 0 | 0.0 | 0 | 0.0 | 0 | 0.0 | 0 | 0.0 | 0 | 0.0 | 10 |
| Kilinochchi | 0 | 0.0 | 0 | 0.0 | 0 | 0.0 | 0 | 0.0 | 0 | 0.0 | 0 | 0.0 | 0 | 0.0 | 0 |
| Mullaitivu | 0 | 0.0 | 0 | 0.0 | 0 | 0.0 | 0 | 0.0 | 0 | 0.0 | 0 | 0.0 | 1 | 50.0 | 2 |
| Vavuniya | 0 | 0.0 | 0 | 0.0 | 1 | 50.0 | 0 | 0.0 | 0 | 0.0 | 0 | 0.0 | 0 | 0.0 | 2 |
| Mannar | 0 | 0.0 | 0 | 0.0 | 0 | 0.0 | 0 | 0.0 | 0 | 0.0 | 0 | 0.0 | 0 | 0.0 | 0 |
| Batticaloa | 0 | 0.0 | 1 | 20.0 | 0 | 0.0 | 0 | 0.0 | 0 | 0.0 | 0 | 0.0 | 0 | 0.0 | 5 |
| Ampara | 0 | 0.0 | 0 | 0.0 | 0 | 0.0 | 0 | 0.0 | 0 | 0.0 | 0 | 0.0 | 0 | 0.0 | 0 |
| Kalmunai | 0 | 0.0 | 5 | 100.0 | 0 | 0.0 | 0 | 0.0 | 0 | 0.0 | 0 | 0.0 | 0 | 0.0 | 5 |
| Trincomalee | 0 | 0.0 | 1 | 100.0 | 0 | 0.0 | 0 | 0.0 | 0 | 0.0 | 0 | 0.0 | 0 | 0.0 | 1 |
| Kurunegala | 0 | 0.0 | 49 | 48.5 | 3 | 3.0 | 0 | 0.0 | 0 | 0.0 | 0 | 0.0 | 0 | 0.0 | 101 |
| Puttalam | 0 | 0.0 | 0 | 0.0 | 0 | 0.0 | 0 | 0.0 | 0 | 0.0 | 0 | 0.0 | 0 | 0.0 | 0 |
| Anuradhapura | 0 | 0.0 | 0 | 0.0 | 0 | 0.0 | 0 | 0.0 | 0 | 0.0 | 0 | 0.0 | 0 | 0.0 | 4 |
| Polonnaruwa | 0 | 0.0 | 1 | 33.3 | 0 | 0.0 | 0 | 0.0 | 0 | 0.0 | 0 | 0.0 | 0 | 0.0 | 3 |
| Badulla | 0 | 0.0 | 2 | 25.0 | 0 | 0.0 | 0 | 0.0 | 0 | 0.0 | 0 | 0.0 | 1 | 12.5 | 8 |
| Monaragala | 0 | 0.0 | 0 | 0.0 | 0 | 0.0 | 0 | 0.0 | 0 | 0.0 | 0 | 0.0 | 0 | 0.0 | 1 |
| Ratnapura | 0 | 0.0 | 1 | 50.0 | 0 | 0.0 | 0 | 0.0 | 0 | 0.0 | 0 | 0.0 | 0 | 0.0 | 2 |
| Kegalle | 0 | 0.0 | 3 | 100.0 | 0 | 0.0 | 0 | 0.0 | 0 | 0.0 | 0 | 0.0 | 0 | 0.0 | 3 |
| Total | 4 | 1.3 | 132 | 41.4 | 7 | 2.2 | 0 | 0.0 | 3 | 0.9 | 1 | 0.3 | 17 | 5.3 | 319 |

Table 26: Distribution of Sputum Conversion of New PTB Cases at the End of the Intensive Phase by District in 2014

| DISTRICT | Total Number Registered | Negative | | Positive | | Died | | Defaulted | | Transferred out | | No result | | Total |
|--------------|-------------------------|-------------|-------------|------------|------------|------------|------------|-----------|------------|-----------------|------------|------------|------------|-------------|
| | | No | Rate | No | Rate | No | Rate | No | Rate | No | Rate | No | Rate | |
| COLOMBO | 1120 | 954 | 85.2 | 20 | 1.8 | 49 | 4.4 | 11 | 1.0 | 0 | 0.0 | 86 | 7.7 | 1120 |
| GAMPAHA | 536 | 463 | 86.4 | 25 | 4.7 | 26 | 4.9 | 15 | 2.8 | 3 | 0.6 | 4 | 0.7 | 536 |
| KALUTARA | 292 | 262 | 89.7 | 6 | 2.1 | 14 | 4.8 | 6 | 2.1 | 0 | 0.0 | 4 | 1.4 | 292 |
| KANDY | 231 | 199 | 86.1 | 4 | 1.7 | 9 | 3.9 | 3 | 1.3 | 0 | 0.0 | 16 | 6.9 | 231 |
| MATALE | 70 | 56 | 80.0 | 6 | 8.6 | 7 | 10.0 | 0 | 0.0 | 0 | 0.0 | 1 | 1.4 | 70 |
| NUWARAELIYA | 101 | 61 | 60.4 | 12 | 11.9 | 9 | 8.9 | 0 | 0.0 | 0 | 0.0 | 19 | 18.8 | 101 |
| GALLE | 212 | 188 | 88.7 | 3 | 1.4 | 15 | 7.1 | 0 | 0.0 | 0 | 0.0 | 6 | 2.8 | 212 |
| MATARA | 120 | 107 | 89.2 | 7 | 5.8 | 5 | 4.2 | 1 | 0.8 | 0 | 0.0 | 0 | 0.0 | 120 |
| HAMBANTOTA | 60 | 51 | 85.0 | 0 | 0.0 | 5 | 8.3 | 2 | 3.3 | 0 | 0.0 | 2 | 3.3 | 60 |
| JAFFNA | 91 | 68 | 74.7 | 2 | 2.2 | 6 | 6.6 | 2 | 2.2 | 0 | 0.0 | 13 | 14.3 | 91 |
| VAVUNIYA | 33 | 25 | 75.8 | 3 | 9.1 | 3 | 9.1 | 0 | 0.0 | 0 | 0.0 | 2 | 6.1 | 33 |
| BATALOEA | 89 | 85 | 95.5 | 0 | 0.0 | 3 | 3.4 | 0 | 0.0 | 0 | 0.0 | 1 | 1.1 | 89 |
| AMPARA | 28 | 25 | 89.3 | 1 | 3.6 | 1 | 3.6 | 0 | 0.0 | 0 | 0.0 | 1 | 3.6 | 28 |
| KALMUNAI | 67 | 58 | 86.6 | 0 | 0.0 | 7 | 10.4 | 1 | 1.5 | 0 | 0.0 | 1 | 1.5 | 67 |
| TRINCOMALEE | 60 | 57 | 95.0 | 1 | 1.7 | 2 | 3.3 | 0 | 0.0 | 0 | 0.0 | 0 | 0.0 | 60 |
| KURUNEGALA | 218 | 199 | 91.3 | 4 | 1.8 | 8 | 3.7 | 2 | 0.9 | 0 | 0.0 | 5 | 2.3 | 218 |
| PUTTALAM | 89 | 73 | 82.0 | 4 | 4.5 | 4 | 4.5 | 2 | 2.2 | 0 | 0.0 | 6 | 6.7 | 89 |
| ANURADAPURA | 142 | 132 | 93.0 | 4 | 2.8 | 5 | 3.5 | 0 | 0.0 | 0 | 0.0 | 1 | 0.7 | 142 |
| POLONNARUWA | 71 | 57 | 80.3 | 3 | 4.2 | 7 | 9.9 | 1 | 1.4 | 0 | 0.0 | 3 | 4.2 | 71 |
| BADULLA | 114 | 80 | 70.2 | 5 | 4.4 | 13 | 11.4 | 3 | 2.6 | 0 | 0.0 | 13 | 11.4 | 114 |
| MONARAGALA | 49 | 44 | 89.8 | 1 | 2.0 | 3 | 6.1 | 0 | 0.0 | 0 | 0.0 | 1 | 2.0 | 49 |
| RATNAPURA | 251 | 181 | 72.1 | 10 | 4.0 | 16 | 6.4 | 5 | 2.0 | 2 | 0.8 | 37 | 14.7 | 251 |
| KEGALLE | 189 | 172 | 91.0 | 4 | 2.1 | 8 | 4.2 | 0 | 0.0 | 0 | 0.0 | 5 | 2.6 | 189 |
| MANNAR | 14 | 11 | 78.6 | 0 | 0.0 | 2 | 14.3 | 0 | 0.0 | 0 | 0.0 | 1 | 7.1 | 14 |
| MULLAITIVU | 18 | 14 | 77.8 | 0 | 0.0 | 0 | 0.0 | 0 | 0.0 | 0 | 0.0 | 4 | 22.2 | 18 |
| KILINOCHCHI | 28 | 23 | 82.1 | 1 | 3.6 | 0 | 0.0 | 0 | 0.0 | 0 | 0.0 | 4 | 14.3 | 28 |
| TOTEL | 4293 | 3645 | 84.9 | 126 | 2.9 | 227 | 5.3 | 54 | 1.3 | 5 | 0.1 | 236 | 5.5 | 4293 |

Table 27: Distribution of Sputum Conversion of Retreatment PTB Cases at the End of the Intensive Phase by District in 2014

| DISTRICT | Total Number Registered | Negative | | Positive | | Died | | Defaulted | | Transferred out | | No result | | Total |
|--------------|-------------------------|------------|-------------|-----------|------------|-----------|------------|-----------|------------|-----------------|------------|-----------|-------------|------------|
| | | No | Rate | No | Rate | No | Rate | No | Rate | No | Rate | No | Rate | |
| COLOMBO | 130 | 91 | 70.0 | 6 | 4.6 | 7 | 5.4 | 3 | 2.3 | 0 | 0.0 | 23 | 17.7 | 130 |
| GAMPAHA | 61 | 48 | 78.7 | 5 | 8.2 | 3 | 4.9 | 3 | 4.9 | 0 | 0.0 | 2 | 3.3 | 61 |
| KALUTARA | 29 | 20 | 69.0 | 4 | 13.8 | 2 | 6.9 | 2 | 6.9 | 0 | 0.0 | 1 | 3.4 | 29 |
| KANDY | 28 | 18 | 64.3 | 1 | 3.6 | 4 | 14.3 | 2 | 7.1 | 0 | 0.0 | 3 | 10.7 | 28 |
| MATALE | 6 | 5 | 83.3 | 1 | 16.7 | 0 | 0.0 | 0 | 0.0 | 0 | 0.0 | 0 | 0.0 | 6 |
| NUWARAELIYA | 11 | 5 | 45.5 | 3 | 27.3 | 1 | 9.1 | 0 | 0.0 | 0 | 0.0 | 2 | 18.2 | 11 |
| GALLE | 25 | 23 | 92.0 | 2 | 8.0 | 0 | 0.0 | 0 | 0.0 | 0 | 0.0 | 0 | 0.0 | 25 |
| MATARA | 8 | 8 | 100.0 | 0 | 0.0 | 0 | 0.0 | 0 | 0.0 | 0 | 0.0 | 0 | 0.0 | 8 |
| HAMBANTOTA | 7 | 5 | 71.4 | 0 | 0.0 | 1 | 14.3 | 0 | 0.0 | 0 | 0.0 | 1 | 14.3 | 7 |
| JAFFNA | 17 | 10 | 58.8 | 2 | 11.8 | 4 | 23.5 | 0 | 0.0 | 0 | 0.0 | 1 | 5.9 | 17 |
| VAVUNIYA | 3 | 2 | 66.7 | 1 | 33.3 | 0 | 0.0 | 0 | 0.0 | 0 | 0.0 | 0 | 0.0 | 3 |
| BATALOIA | 10 | 7 | 70.0 | 1 | 10.0 | 0 | 0.0 | 0 | 0.0 | 0 | 0.0 | 2 | 20.0 | 10 |
| AMPARA | 4 | 3 | 75.0 | 0 | 0.0 | 0 | 0.0 | 0 | 0.0 | 0 | 0.0 | 1 | 25.0 | 4 |
| KALMUNAI | 8 | 7 | 87.5 | 0 | 0.0 | 1 | 12.5 | 0 | 0.0 | 0 | 0.0 | 0 | 0.0 | 8 |
| TRINCOMALEE | 7 | 3 | 42.9 | 0 | 0.0 | 1 | 14.3 | 1 | 14.3 | 0 | 0.0 | 2 | 28.6 | 7 |
| KURUNEGALA | 17 | 16 | 94.1 | 1 | 5.9 | 0 | 0.0 | 0 | 0.0 | 0 | 0.0 | 0 | 0.0 | 17 |
| PUTTALAM | 10 | 8 | 80.0 | 0 | 0.0 | 0 | 0.0 | 0 | 0.0 | 0 | 0.0 | 2 | 20.0 | 10 |
| ANURADAPURA | 10 | 10 | 100.0 | 0 | 0.0 | 0 | 0.0 | 0 | 0.0 | 0 | 0.0 | 0 | 0.0 | 10 |
| POLONNARUWA | 6 | 4 | 66.7 | 2 | 33.3 | 0 | 0.0 | 0 | 0.0 | 0 | 0.0 | 0 | 0.0 | 6 |
| BADULLA | 13 | 8 | 61.5 | 0 | 0.0 | 0 | 0.0 | 0 | 0.0 | 0 | 0.0 | 5 | 38.5 | 13 |
| MONARAGALA | 2 | 1 | 50.0 | 0 | 0.0 | 0 | 0.0 | 0 | 0.0 | 0 | 0.0 | 1 | 50.0 | 2 |
| RATNAPURA | 19 | 17 | 89.5 | 1 | 5.3 | 0 | 0.0 | 0 | 0.0 | 0 | 0.0 | 1 | 5.3 | 19 |
| KEGALLE | 17 | 10 | 58.8 | 2 | 11.8 | 1 | 5.9 | 0 | 0.0 | 0 | 0.0 | 4 | 23.5 | 17 |
| MANNAR | 1 | 0 | 0.0 | 0 | 0.0 | 0 | 0.0 | 0 | 0.0 | 0 | 0.0 | 1 | 100.0 | 1 |
| MULLAITIVU | 2 | 2 | 100.0 | 0 | 0.0 | 0 | 0.0 | 0 | 0.0 | 0 | 0.0 | 0 | 0.0 | 2 |
| KILINOCHCHI | 5 | 4 | 80.0 | 0 | 0.0 | 0 | 0.0 | 0 | 0.0 | 0 | 0.0 | 1 | 20.0 | 5 |
| TOTEL | 456 | 335 | 73.5 | 32 | 7.0 | 25 | 5.5 | 11 | 2.4 | 0 | 0.0 | 53 | 11.6 | 456 |



Maps

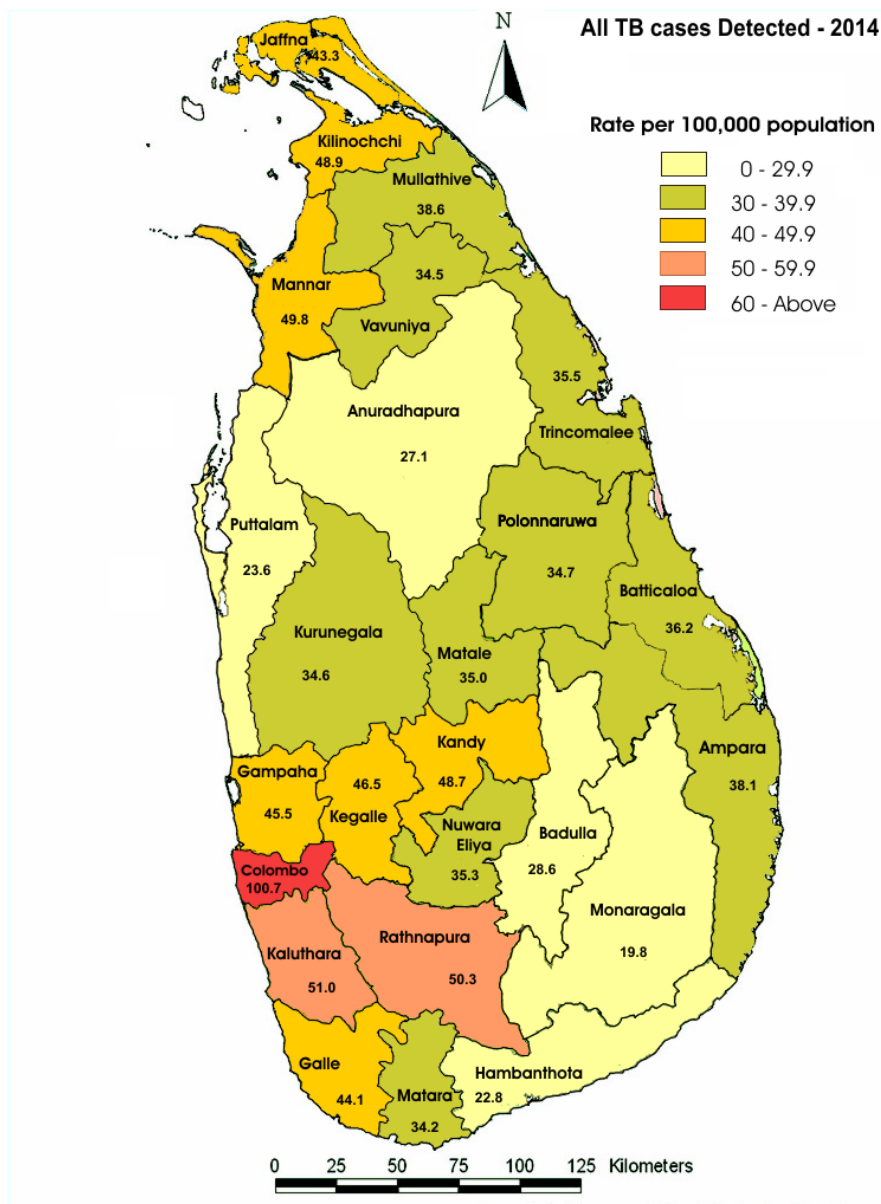


Figure 18: Map of Case Notification Distribution of TB in 2014

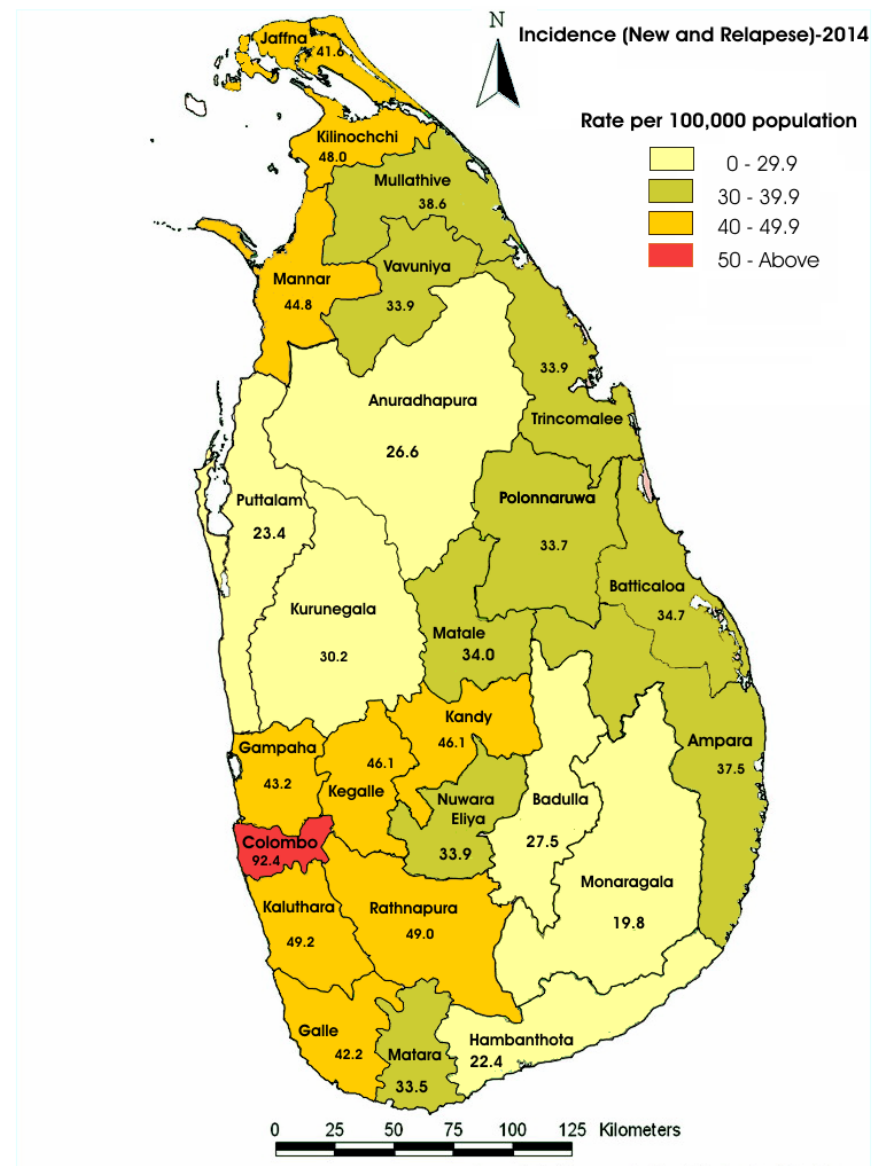


Figure 19: Map of Case Incidence Distribution of TB in 2014

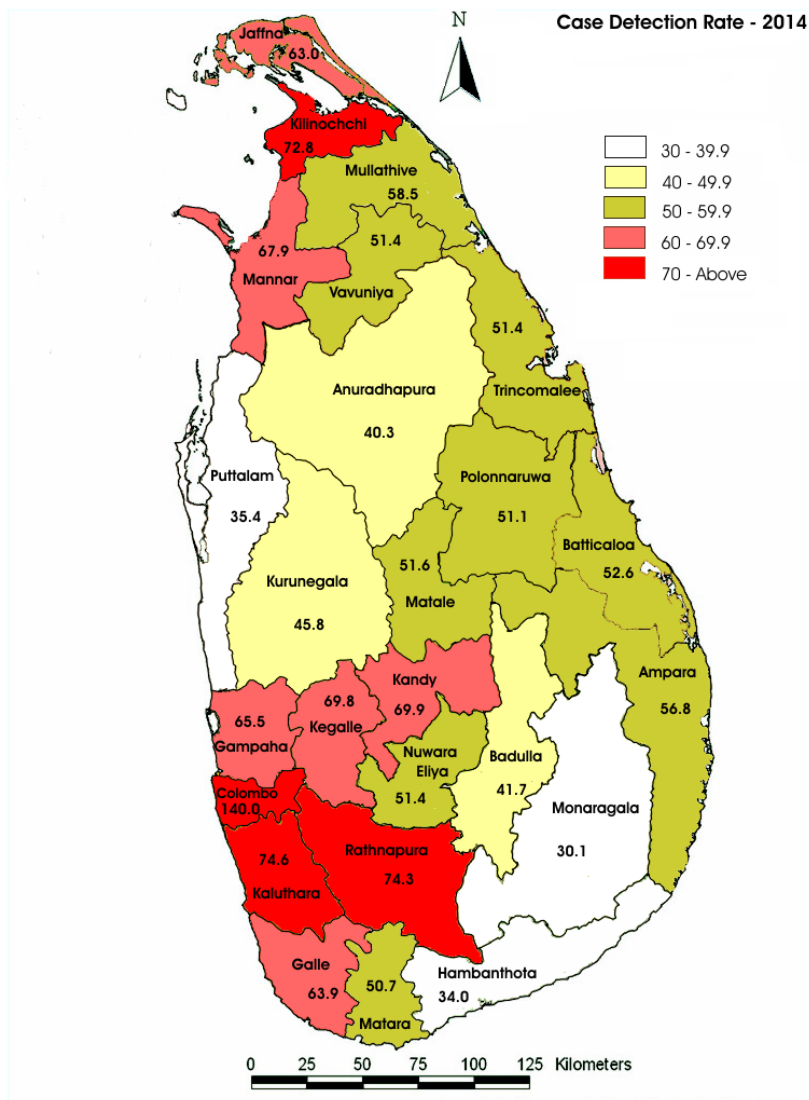


Figure 20: Map of Case Detection Distribution of TB in 2014

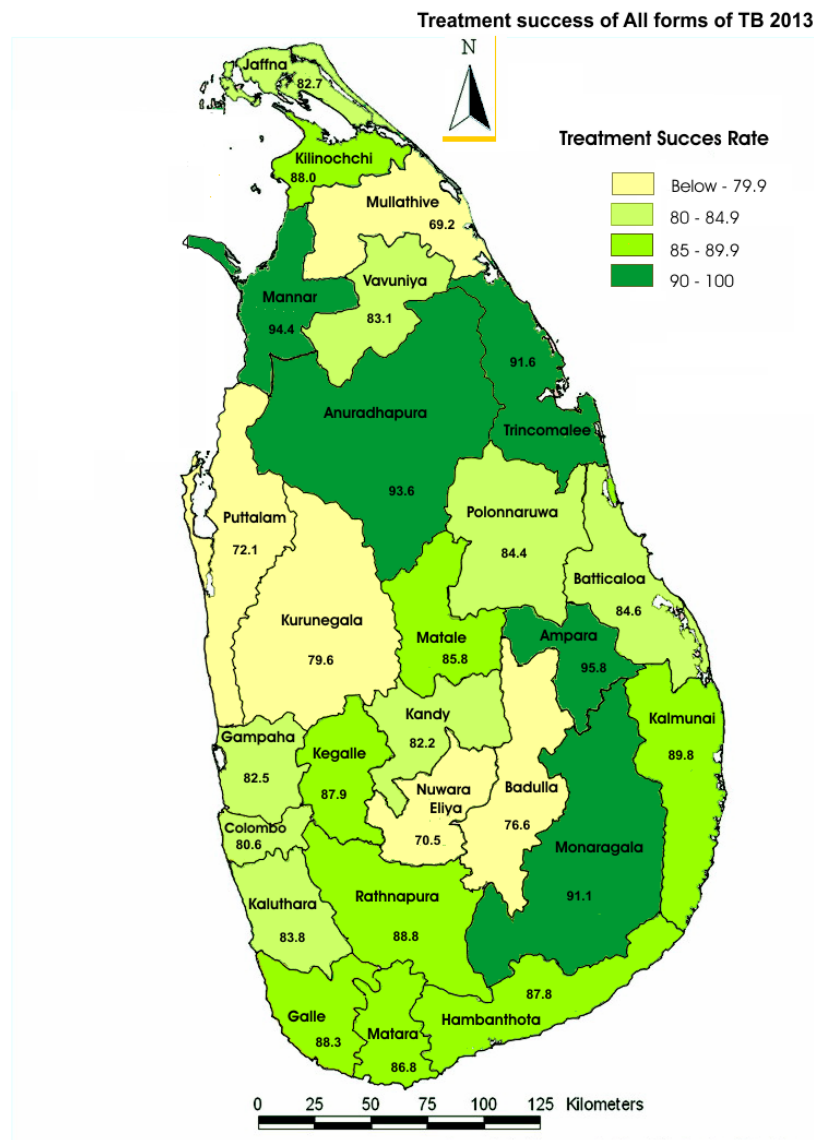
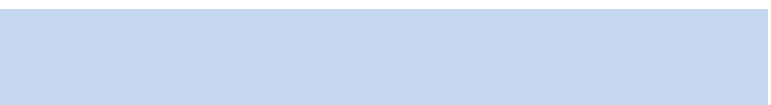


Figure 21: Map of Treatment Success Distribution of TB Cases in 2013



Annexure

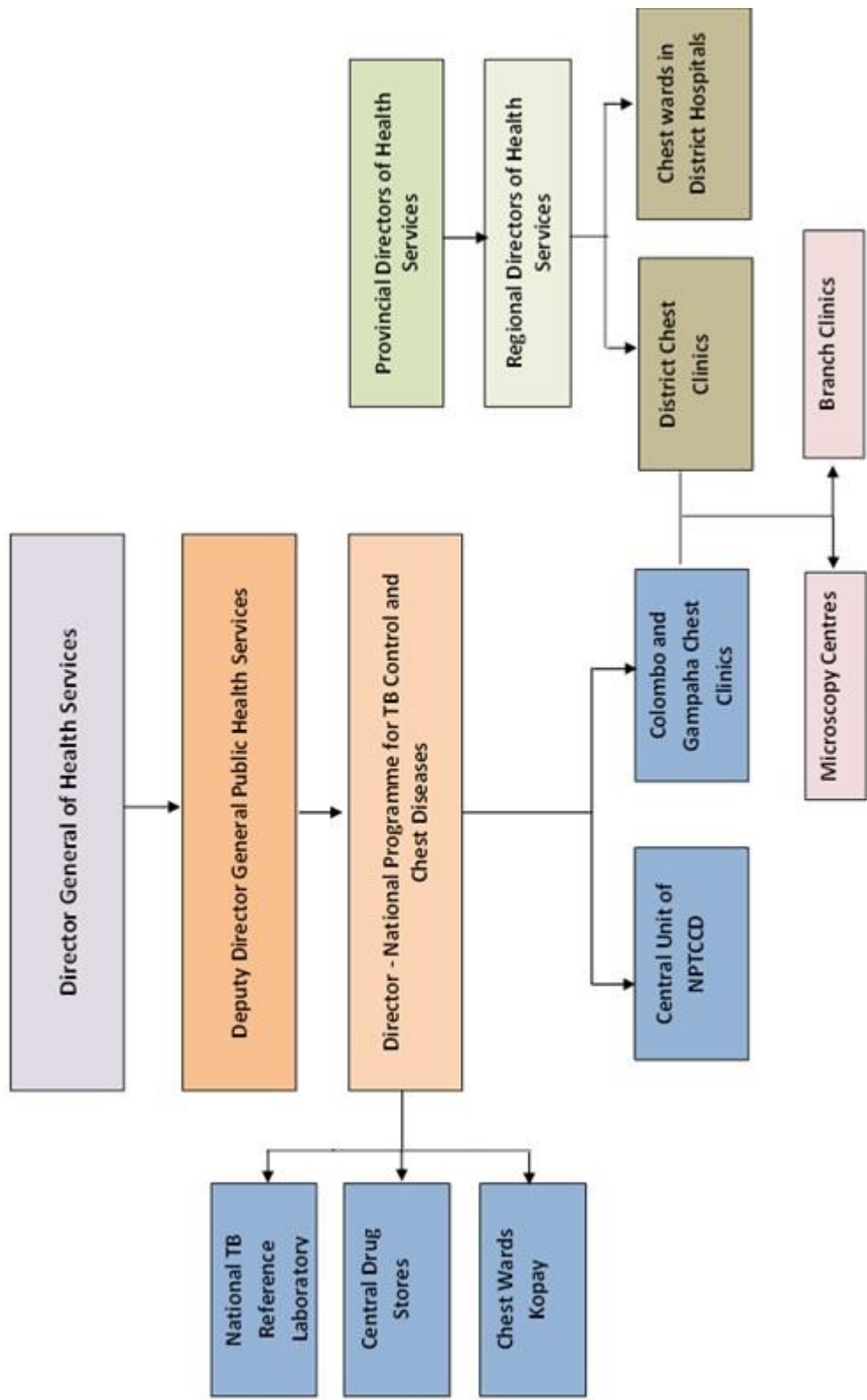


Figure 22: Organizational Structure of National TB Control Program (2014)

Table 29: Funds received in 2014

| Object Title | Amount (Rs.) |
|---|--------------------|
| 1. Personal Emoluments | USD 3454429 |
| 2. TB Programme costs | USD 759555 |
| 3. Anti TB Drugs (drug susceptible & drug resistant) | USD114986 |
| 4. Laboratory Infrastructure, equipment and supplies | USD352882 |
| 5. Research | USD 9545 |
| 6. Other Expenditure | USD12984 |
| Total | USD 4734381 |

Table 32: Training Programmes carried out at Central Level, Provincial and District Level in 2014

| No | Name of the programme | Source of Funding | Place/ Venue |
|-----------------|--|-------------------|---------------------------|
| 1. Local | | | |
| 01 | Modular Training for DTCD trainees & DTCO/MOO attached to the chest clinic & chest wards | GOSL | |
| 02 | Training on GIS for MOO and other Staff | GOSL | |
| 03 | Workshop on Bid Evaluation | GOSL | |
| 04 | Workshop on "Training needs Analysis" for Officers of NPTCCD & SDFL | GOSL | |
| 05 | Train the Trainer at SDFL | GOSL | |
| 06 | Skill Development of Office Staff (University Of Colombo) | GOSL | |
| 07 | Refresher Training on TB for Consultants NHSL | GOSL | |
| 08 | Infection Control Training for Nurses 02 Programmes for Nurses of NHSL and 01 Programme for Nurses of Gampaha District | GFATM | February, July and August |
| 09 | Modular training for DTCO/MOO attached to the chest clinic & Chest wards. | GFATM | Nov 2014 |
| 10 | Modular training for Nurses and PHIs attached to the chest clinic & Chest wards. | GFATM | Dec 2014 |
| 11 | Drug Management Training | GFATM | Dec 2014 |

Table 32: Foreign Training Programmes carried out at Central Level, Provincial and District Level in 2014

| No | Name of the programme | Country | Source of Funding |
|----|--|------------------|-------------------|
| 01 | TB Modular training at National TB Training Centre, | Bangalore, India | WHO |
| 02 | WHO Meeting | Delhi, India, | WHO |
| 03 | Training on MDR TB | India, Delhi | WHO |
| 04 | Workshop on the Development of National TB Strategic Plans | Bains, France | WHO |
| 05 | Regional meeting of National TB Control Programme Managers and Partners. | New Delhi, India | WHO |
| 06 | SAARC Workshop on Best practices on TB/Diabetes and Paediatric TB | Colombo | SAARC |
| 07 | SAARC Regional Meeting of Programme Managers of TB and HIV/AIDS | Thimphu, Bhutan | SAARC |
| 08 | SAARC Governing Board of STAC | | SAARC |
| 09 | SAARC Training on Leadership | Male | SAARC |
| 10 | SAARC Training on MDR TB | Bangladesh | SAARC |
| 11 | Training on Operational research | Kathmandu- Nepal | SAARC |